

# OFFICE BUILDING FOR SALE

## 5,000 +/- Two Story Office Building

**King** Industrial  
Realty, Inc.



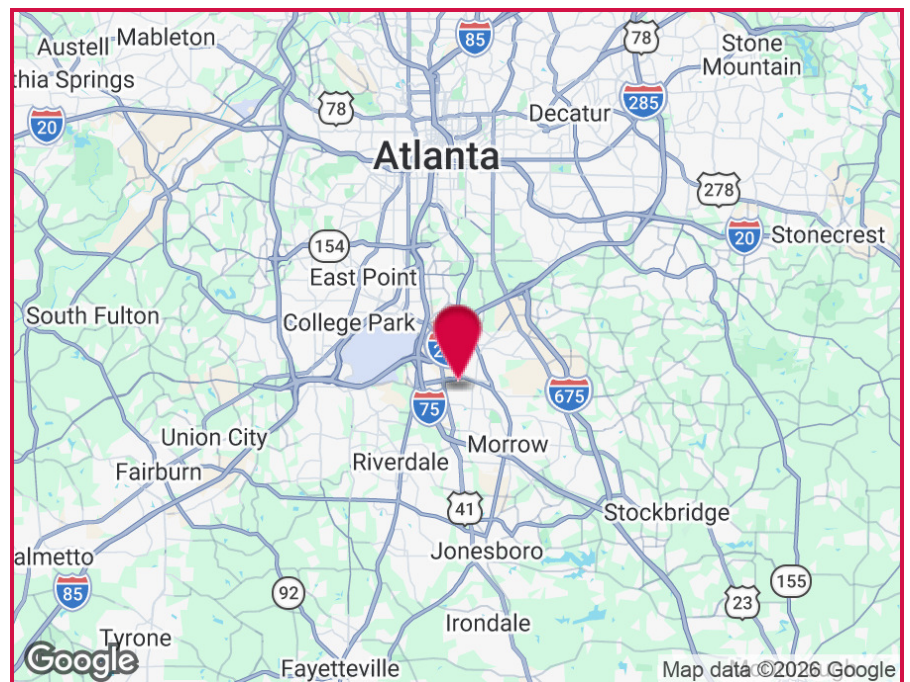
## 525 Forest Parkway, Forest Park, GA 30297

### OFFERING SUMMARY

**Building Size:** 5,000 SF  
**Zoning:** GB

### PROPERTY HIGHLIGHTS

- 1,200 - 5,000 SF Suites Available
- First Floor: 2,500 SF
- Second Floor: 1,200 - 2,500 SF
- Close to I-85 & I-285
- 7.8 Miles to Hartsfield-Jackson International Airport
- 11.7 Miles to Downtown Atlanta



For More Information Contact:

**BOB STEPHENS**

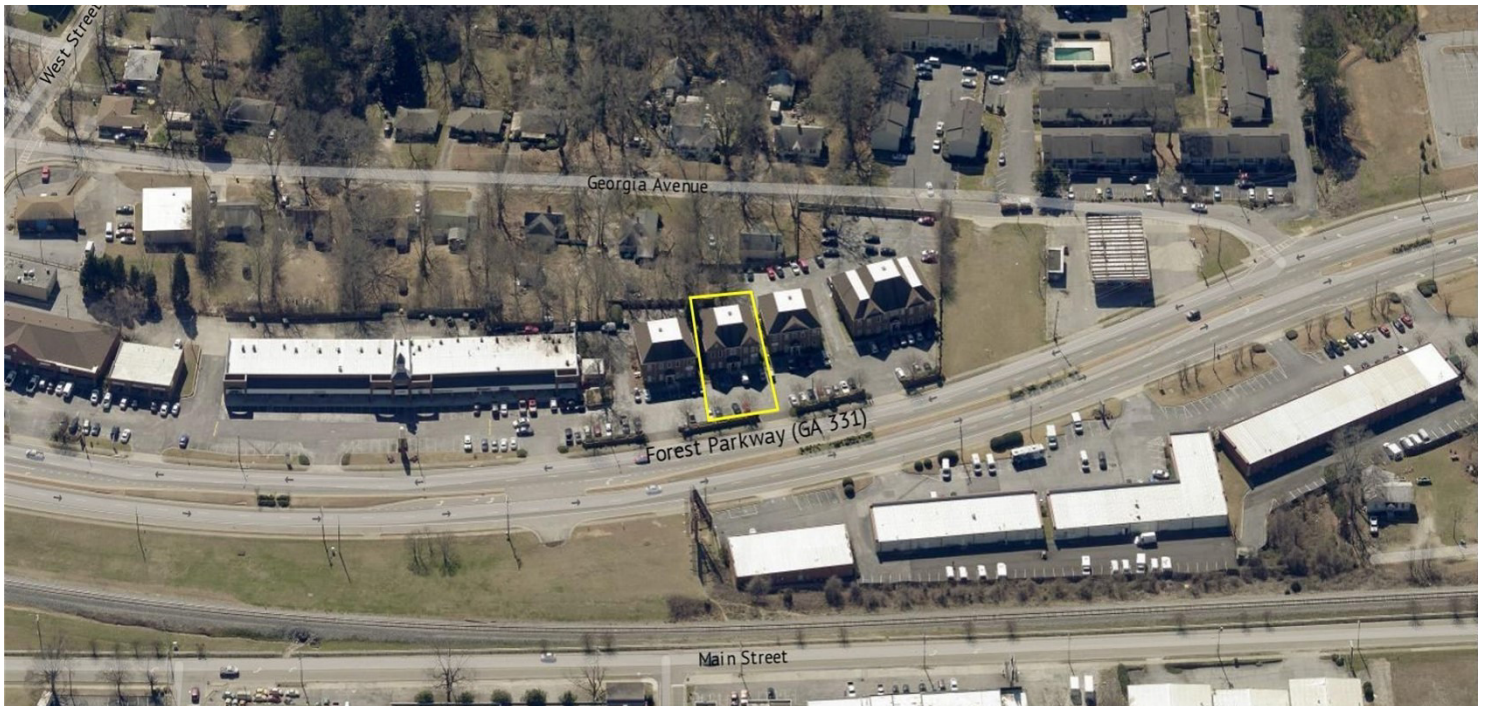
Vice President

404.942.2076

[bstephens@kingindustrial.com](mailto:bstephens@kingindustrial.com)

OFFICE BUILDING FOR SALE  
5,000 +/- SF Two Story Building  
525 Forest Parkway, Forest Park, GA 30297

**King** Industrial  
Realty, Inc.



For More Information Contact:

**BOB STEPHENS**

Vice President

404.942.2076

[bstephens@kingindustrial.com](mailto:bstephens@kingindustrial.com)

# OFFICE BUILDING FOR SALE

## 5,000 +/- SF Two Story Building

525 Forest Parkway, Forest Park, GA 30297

**KING** Industrial  
Realty, Inc.



For More Information Contact:

**BOB STEPHENS**

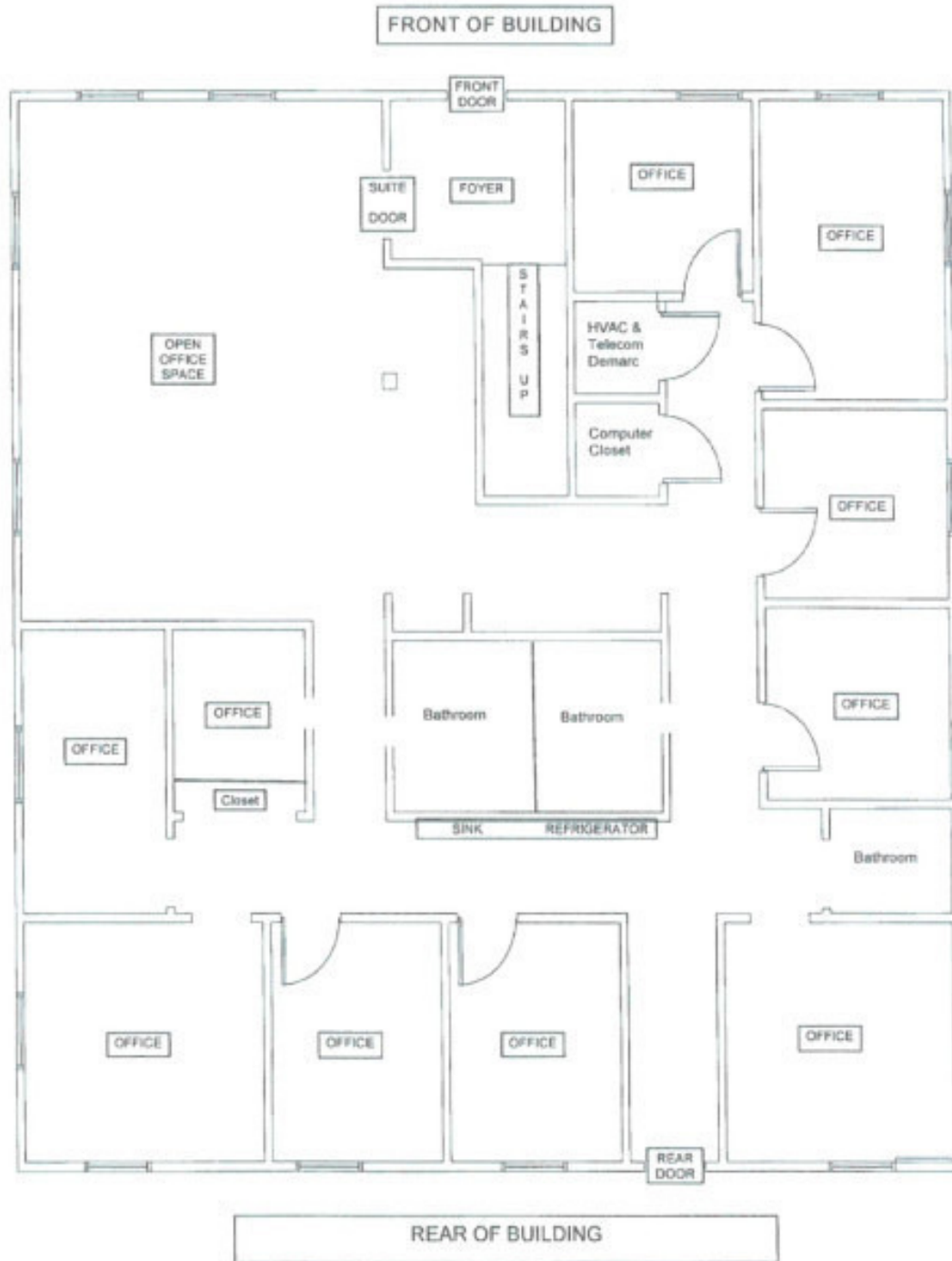
Vice President

404.942.2076

[bstephens@kingindustrial.com](mailto:bstephens@kingindustrial.com)

# OFFICE BUILDING FOR SALE

5,000 +/- SF Two Story Building  
525 Forest Parkway, Forest Park, GA 30297



For More Information Contact:

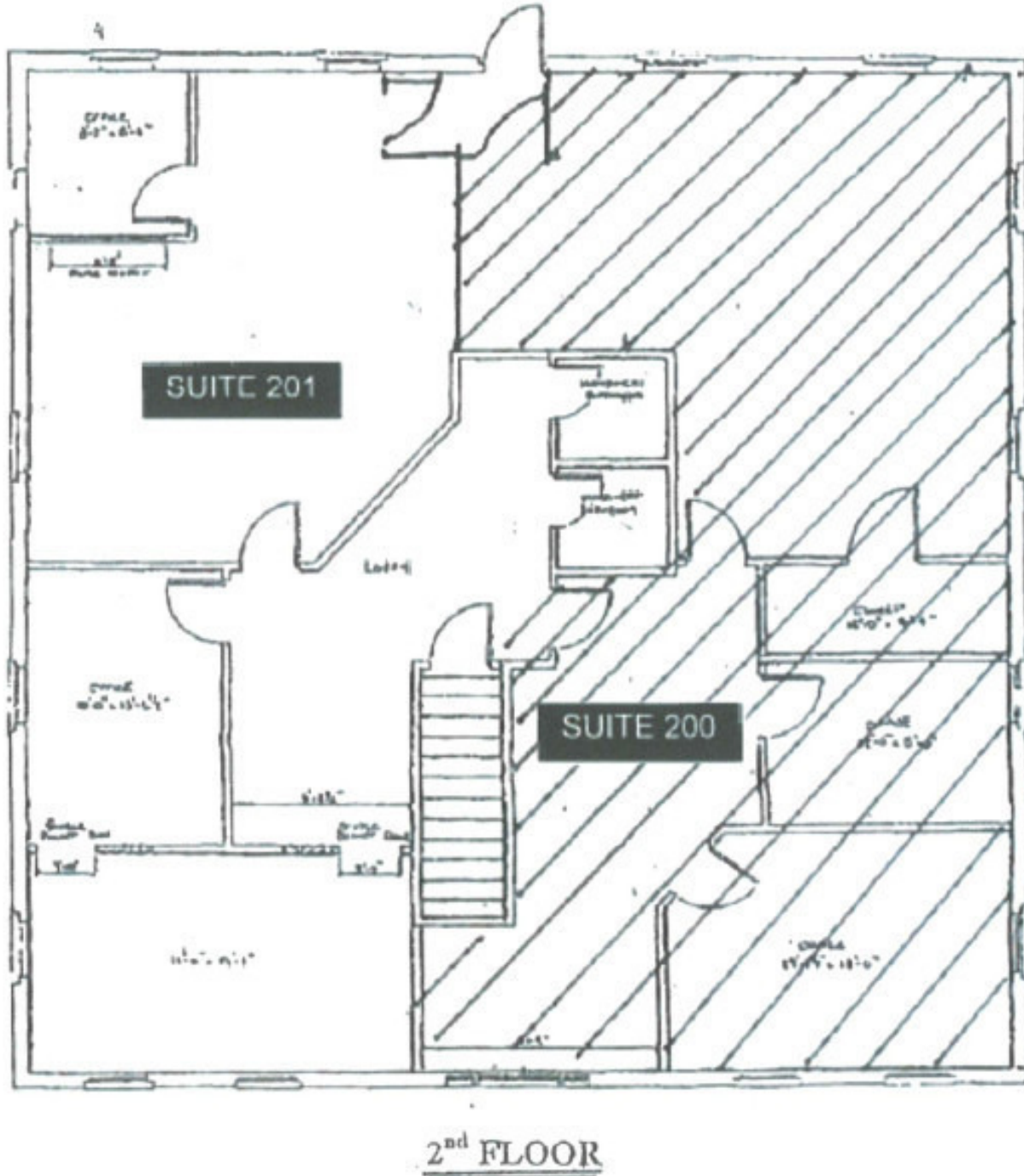
**BOB STEPHENS**

Vice President

404.942.2076

[bstephens@kingindustrial.com](mailto:bstephens@kingindustrial.com)

OFFICE BUILDING FOR SALE  
5,000 +/- SF Two Story Building  
525 Forest Parkway, Forest Park, GA 30297



For More Information Contact:

**BOB STEPHENS**

Vice President

404.942.2076

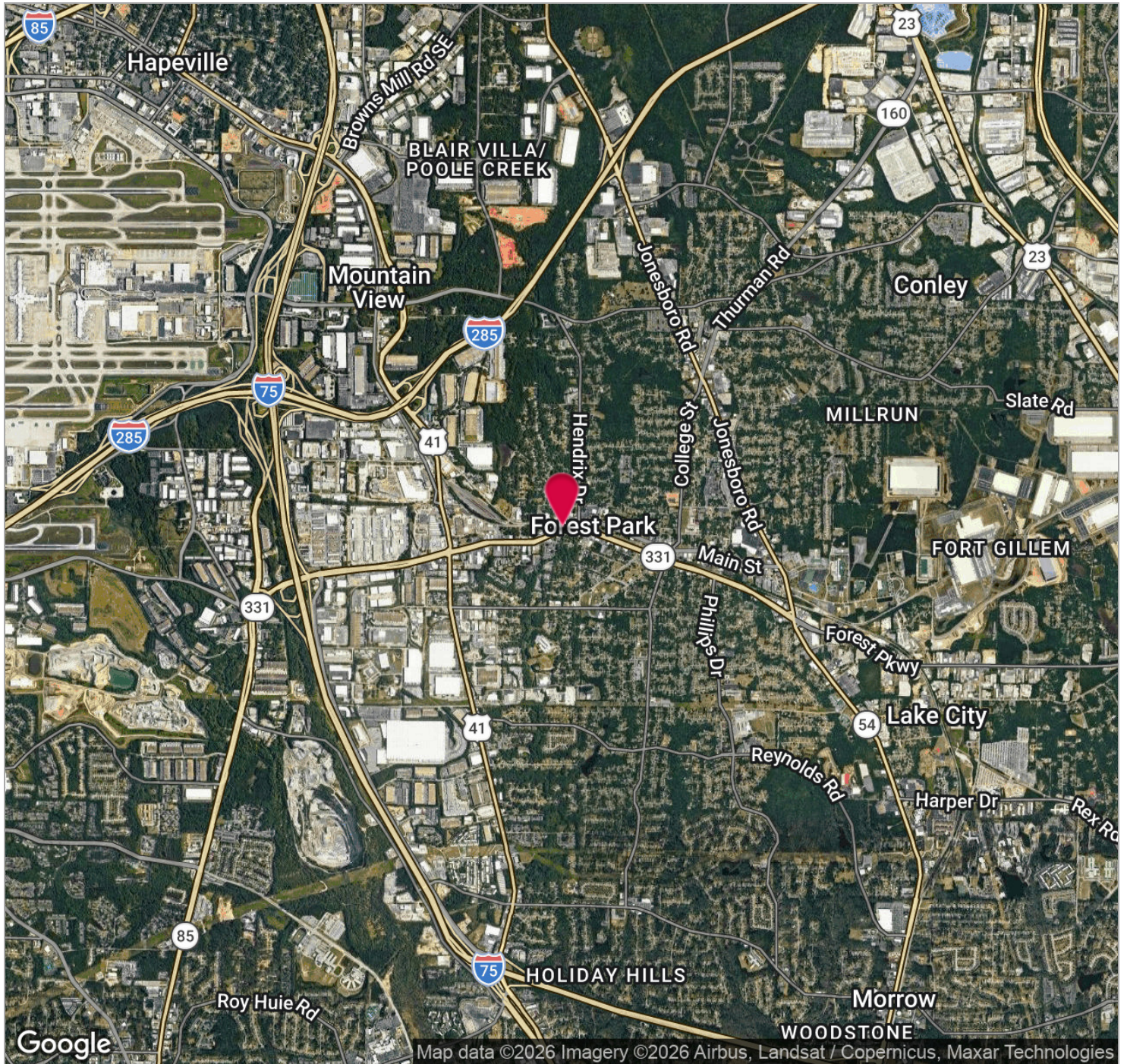
[bstephens@kingindustrial.com](mailto:bstephens@kingindustrial.com)

# OFFICE BUILDING FOR SALE

## 5,000 +/- SF Two Story Building

525 Forest Parkway, Forest Park, GA 30297

**KING** Industrial  
Realty, Inc.



For More Information Contact:

**BOB STEPHENS**

Vice President

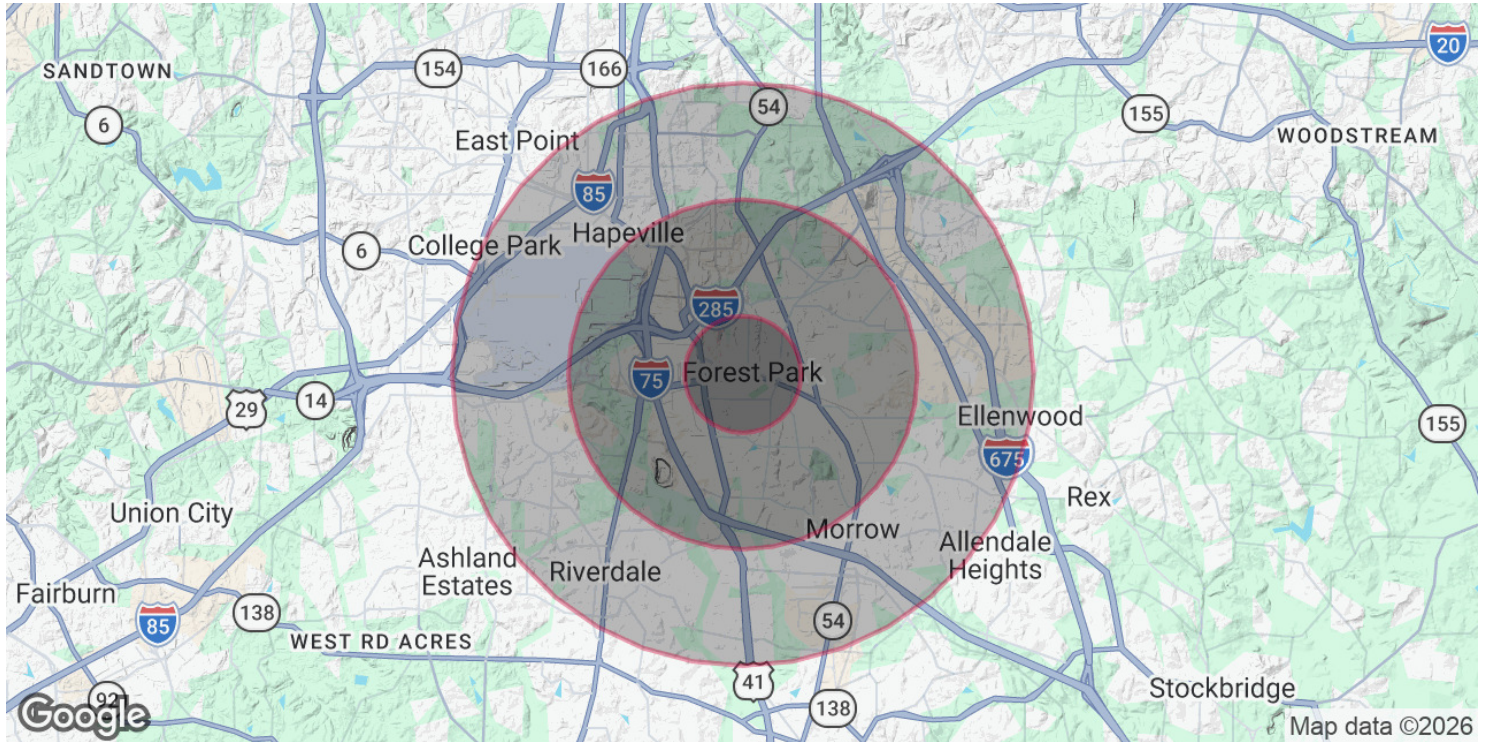
404.942.2076

[bstephens@kingindustrial.com](mailto:bstephens@kingindustrial.com)

# OFFICE BUILDING FOR SALE

## 5,000 +/- SF Two Story Building

525 Forest Parkway, Forest Park, GA 30297



### POPULATION

	1 MILE	3 MILES	5 MILES
Total Population	6,018	50,402	147,302
Average Age	30.9	31.1	31.2
Average Age (Male)	30.3	31.2	31.1
Average Age (Female)	33.5	31.2	31.2

### HOUSEHOLDS & INCOME

	1 MILE	3 MILES	5 MILES
Total Households	1,782	15,958	50,941
# of Persons per HH	3.4	3.2	2.9
Average HH Income	\$36,654	\$40,199	\$42,772
Average House Value	\$101,630	\$116,169	\$135,048

\* Demographic data derived from 2020 ACS - US Census

For More Information Contact:

**BOB STEPHENS**

Vice President

404.942.2076

[bstephens@kingindustrial.com](mailto:bstephens@kingindustrial.com)