

FOR LEASE

HIGH EXPOSURE RETAIL SPACE IN FLEETWOOD

8410 160 Street
Surrey, BC



LOCAL FOCUS. POWERFUL RESULTS.

PROPERTY HIGHLIGHTS:

- 2,215 sf retail unit in an established commercial complex
- Close proximity to amenities and major transportation arteries
- High exposure with signage opportunities
- Asking lease rate: \$31.00 psf net

For more information
PLEASE CONTACT:

George Richmond
d 604.283.1439
c 604.786.1094
george@FLRE.ca

FLRE.ca

FOR LEASE

HIGH EXPOSURE RETAIL SPACE IN FLEETWOOD

8410 160 Street
Surrey, BC

OPPORTUNITY

This offering represents the opportunity to lease a 2,215 sf unit in a multi-tenant commercial complex located in Fleetwood Town Centre. The building is home to Edith + Arthur Neighbourhood Public House which is owned and operated by Joseph Richard Group.

LOCATION

The subject property is located in Surrey's bustling Fleetwood Town Centre, at the busy intersection of 160th Street and 84th Avenue, just around the corner from Fraser Highway. Nearby amenities include a variety of retail including grocery stores, banks, and restaurants as well as the Fleetwood Community Centre, Surrey Sport and Leisure Complex, and Fleetwood Park. The area has seen steady growth in recent years with ongoing residential and commercial development.

PROPERTY FEATURES

- Large cooler (removable)
- Exposure on 84th Avenue
- Signage opportunities including corner pylon signage
- Access/egress points on 160th Street and 84th Avenue
- 29 shared parking stalls

ZONING

The property is zoned C-8 (Community Commercial Zone) which allows for a variety of retail, service, restaurant and office uses.

BASIC RENT

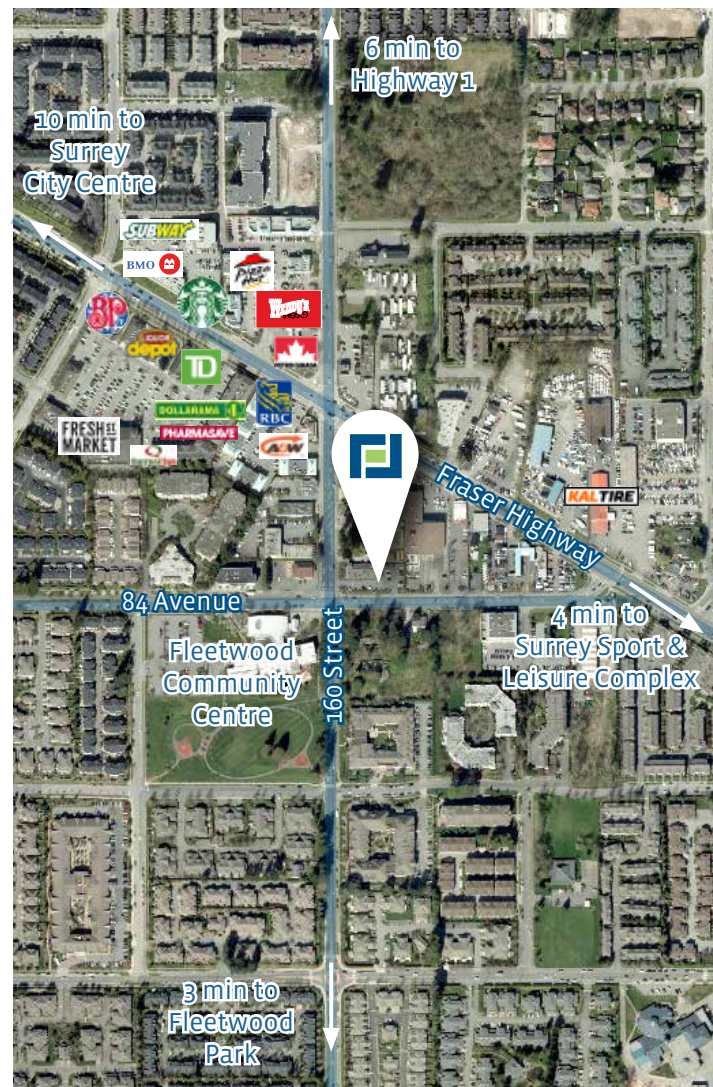
\$31.00 psf net

ADDITIONAL RENT

\$9.00 psf

MONTHLY RENT

\$7,383.33 per month



E.&O.E: This document/email has been prepared by Frontline Real Estate Services Ltd. for advertising and general information only. The information contained herein was obtained from sources which we deem reliable and, while thought to be correct, is not guaranteed by Frontline Real Estate Services Ltd. Any interested party should undertake their own inquiries as to the accuracy of the information. Frontline Real Estate Services Ltd. excludes unequivocally all inferred or implied terms, conditions and warranties arising out of this document and excludes all liability for loss and damages arising there from.

LOCAL FOCUS. POWERFUL RESULTS.