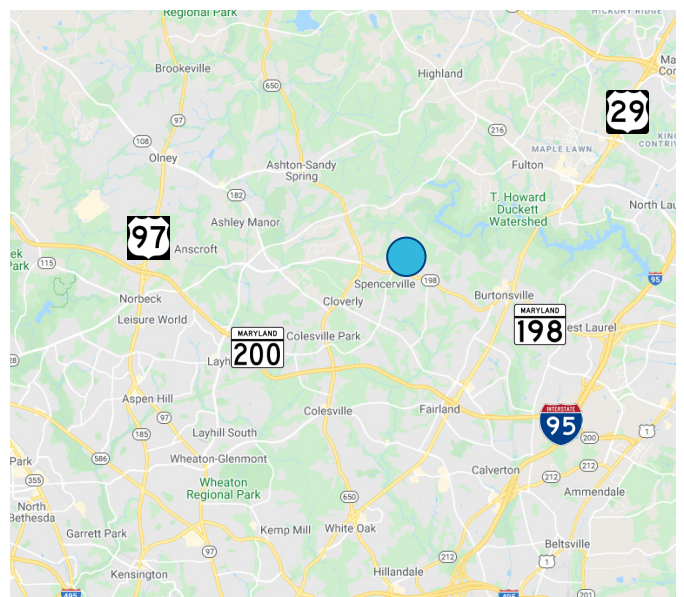




| Available | |
|-----------------------------------|------------------------|
| Yard A | Yard C |
| Sea Containers – (2) 40', (1) 20' | Extra employee parking |
| Lot Size – 20,000 Square Feet | |
| \$4,950 | |

Opportunity

- 9.84 Acres
- Secure landscape storage lot
- Irrigated plant holding area
- Public water/septic
- Lighted yard area
- Bulk storage bins
- Zoned agriculture with Cluster Development Option with special exception for 45 trucks, 150 employees and wholesale nursery



Office and Yard Space Available

2630 Spencerville Road, Spencerville, Maryland



Yard A



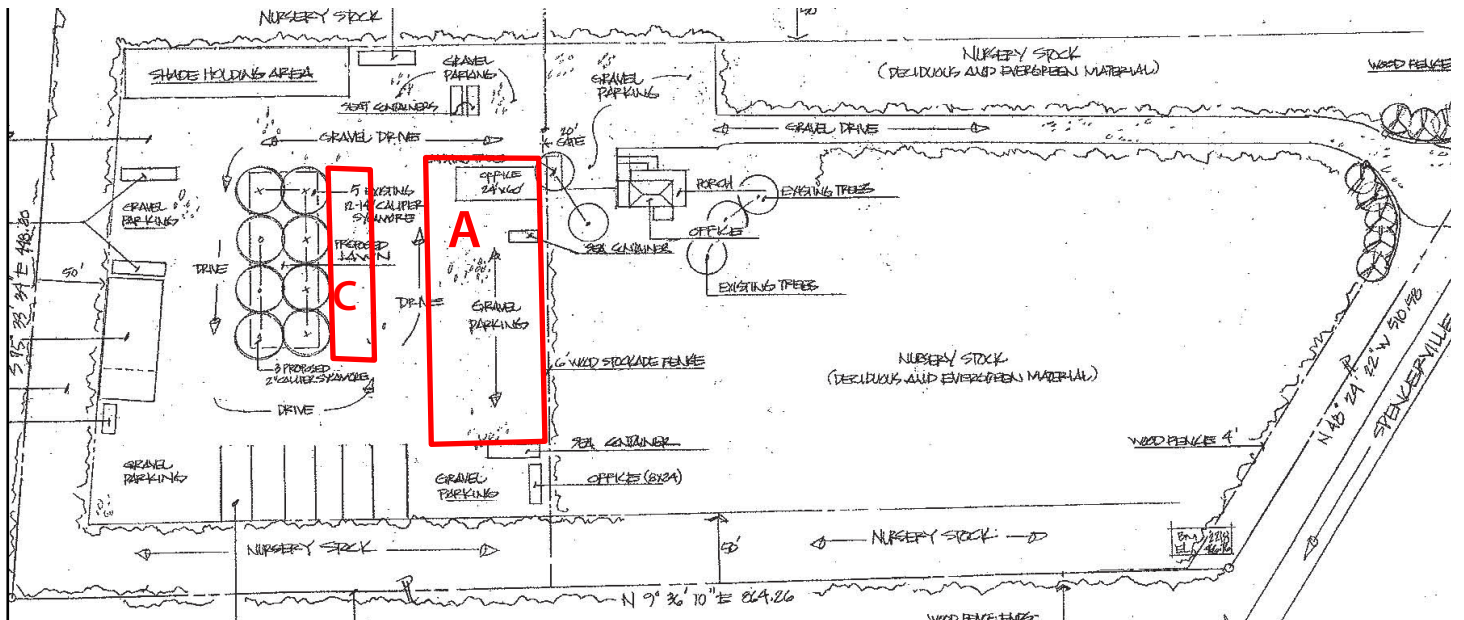
Yard A



Yard A



Irrigated Plant Holding Area



For more information, contact:

Tom Truxillo
 Senior Vice President
 301.417.1096
 Tom.truxillo@avisonyoung.com

11921 Rockville Pike,
 Suite 200
 Rockville, MD 20852
 301.948.9870