

RETAIL SPACE FOR LEASE

3186-D Pelham Parkway ◇ Pelham, AL ◇ 35124 ◇ Shelby County



BUILDING SIZE: 6,630 SQ FT / ASKING PRICE: \$ 6,750/month

Mark Dinan, MBA, CCIM

(c) 205-980-3434

(c) 205-243-3434

markdinan@bellsouth.net

MARK DINAN
Commercial & Investment Real Estate



*All Information furnished regarding property sale, rental, or financing is from sources deemed reliable, but is not guaranteed.

LOCATION DETAILS

3186-D Pelham Parkway ♦ Pelham, AL ♦ 35124 ♦ Shelby County

- ◆ 6,630 total SF available. 4,350 SF on upper level and 2,280 SF on the lower level.
- ◆ Built in 2001.
- ◆ Beautiful stained concrete floors.
- ◆ Lots of windows.
- ◆ Divided Highway . Median Cut and Traffic Light
- ◆ On Busy Hwy 31 with 34,000 Cars per Day
- ◆ At crossroads to Alabaster, Helena and Pelham.
- ◆ Excellent Access and Visibility
- ◆ Near Pelham City Hall.
- ◆ Excellent Front Door Parking
- ◆ Pole Signage
- ◆ Façade Signage
- ◆ Convenient to I-65, via exits 246 or 242



Mark Dinan, MBA, CCIM

(o) 205-980-3434

(c) 205-243-3434

markdinan@bellsouth.net

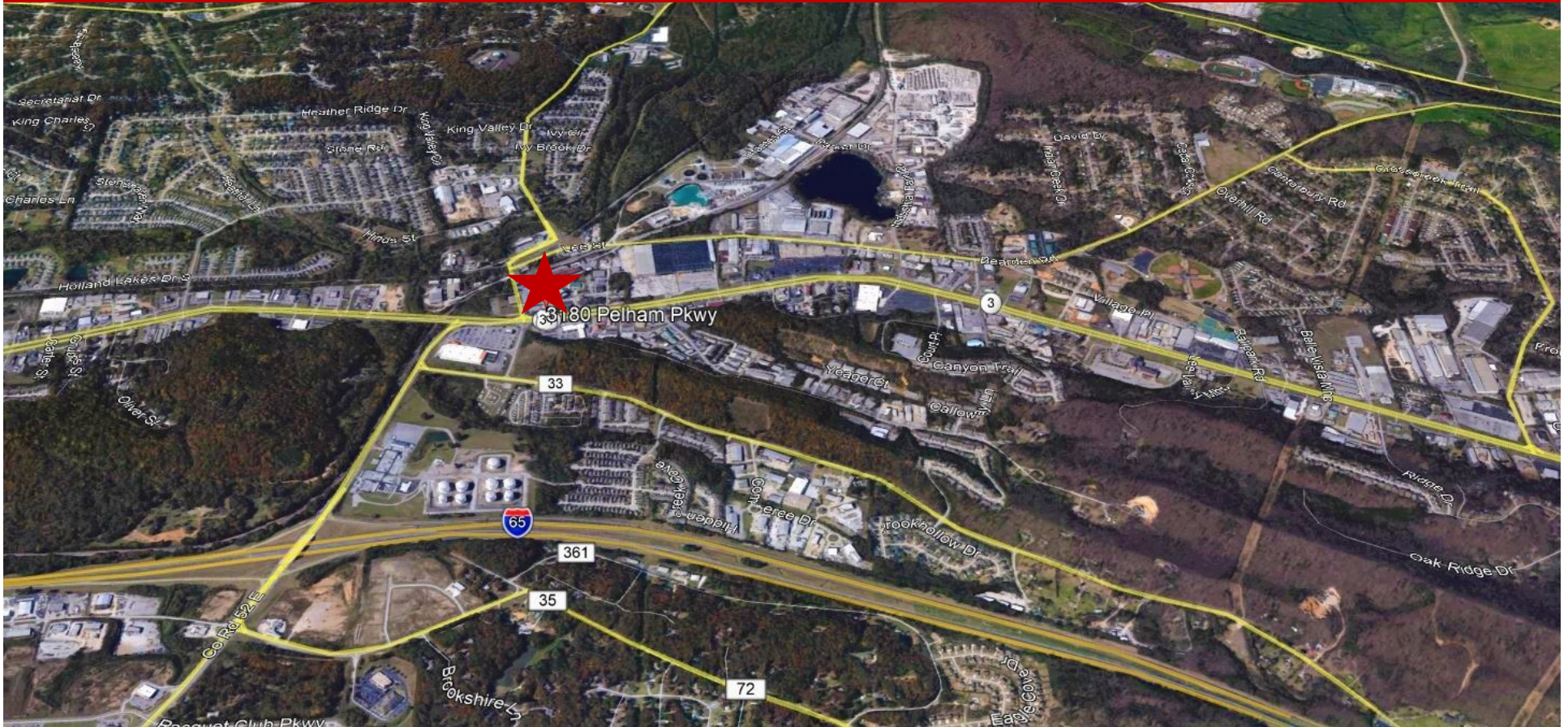
MARK DINAN
Commercial & Investment Real Estate



*All Information furnished regarding property sale, rental, or financing is from sources deemed reliable, but is not guaranteed.

AERIAL PHOTO

3186-D Pelham Parkway ♦ Pelham, AL ♦ 35124 ♦ Shelby County



Mark Dinan, MBA, CCIM

(o) 205-980-3434

(c) 205-243-3434

markdinan@bellsouth.net

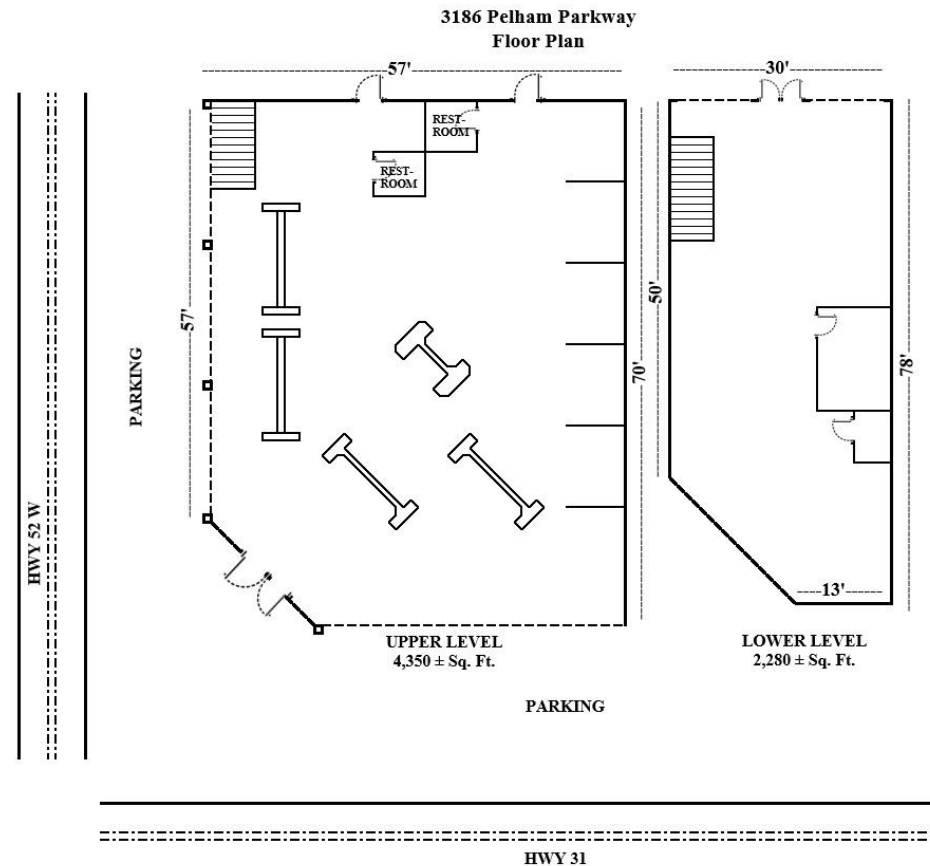
MARK DINAN
Commercial & Investment Real Estate



*All Information furnished regarding property sale, rental, or financing is from sources deemed reliable, but is not guaranteed.

FLOOR PLAN

3186-D Pelham Parkway ♦ Pelham, AL ♦ 35124 ♦ Shelby County



Mark Dinan, MBA, CCIM

(c) 205-980-3434

(c) 205-243-3434

markdinan@bellsouth.net

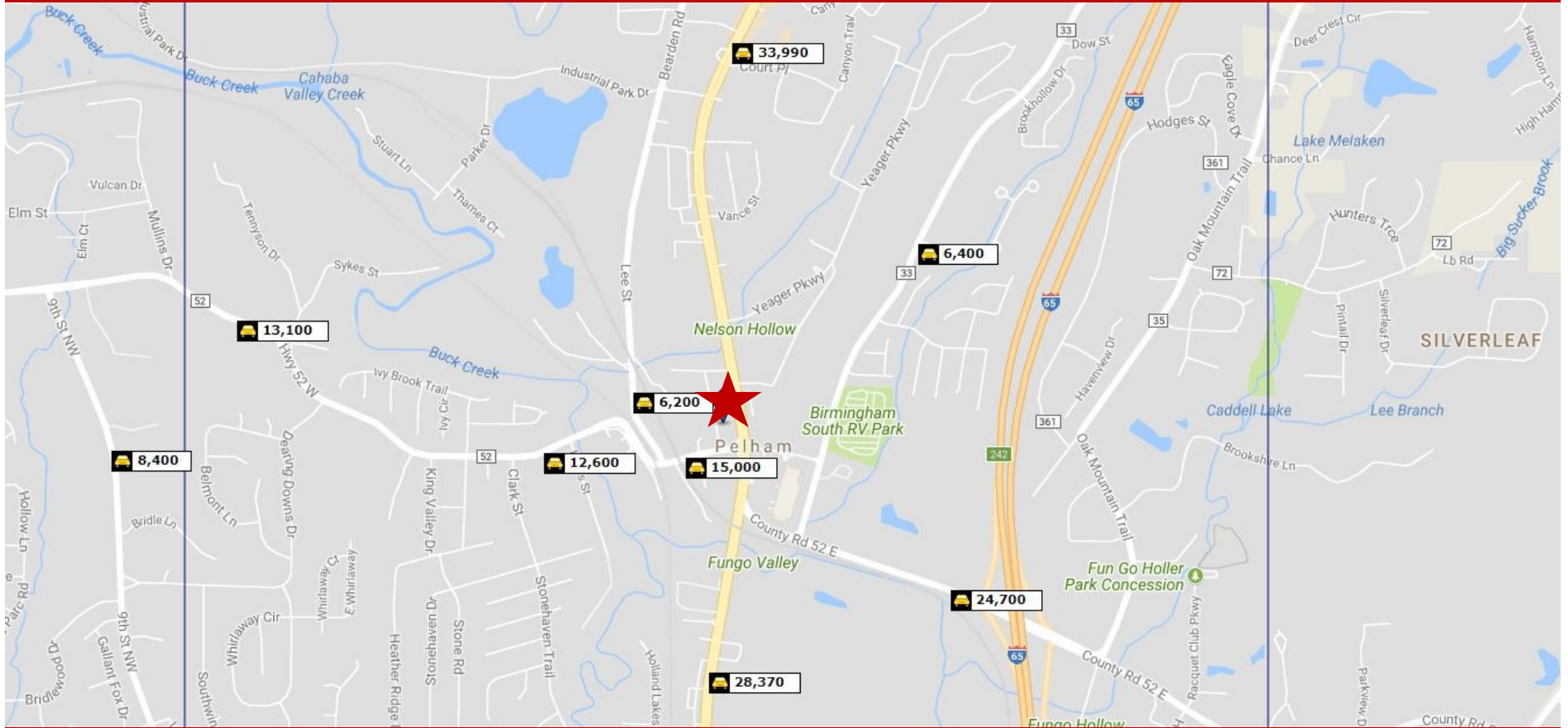
MARK DINAN
Commercial & Investment Real Estate



*All Information furnished regarding property sale, rental, or financing is from sources deemed reliable, but is not guaranteed.

TRAFFIC COUNTS

3186-D Pelham Parkway ♦ Pelham, AL ♦ 35124 ♦ Shelby County



Mark Dinan, MBA, CCIM

(c) 205-980-3434

(c) 205-243-3434

markdinan@bellsouth.net

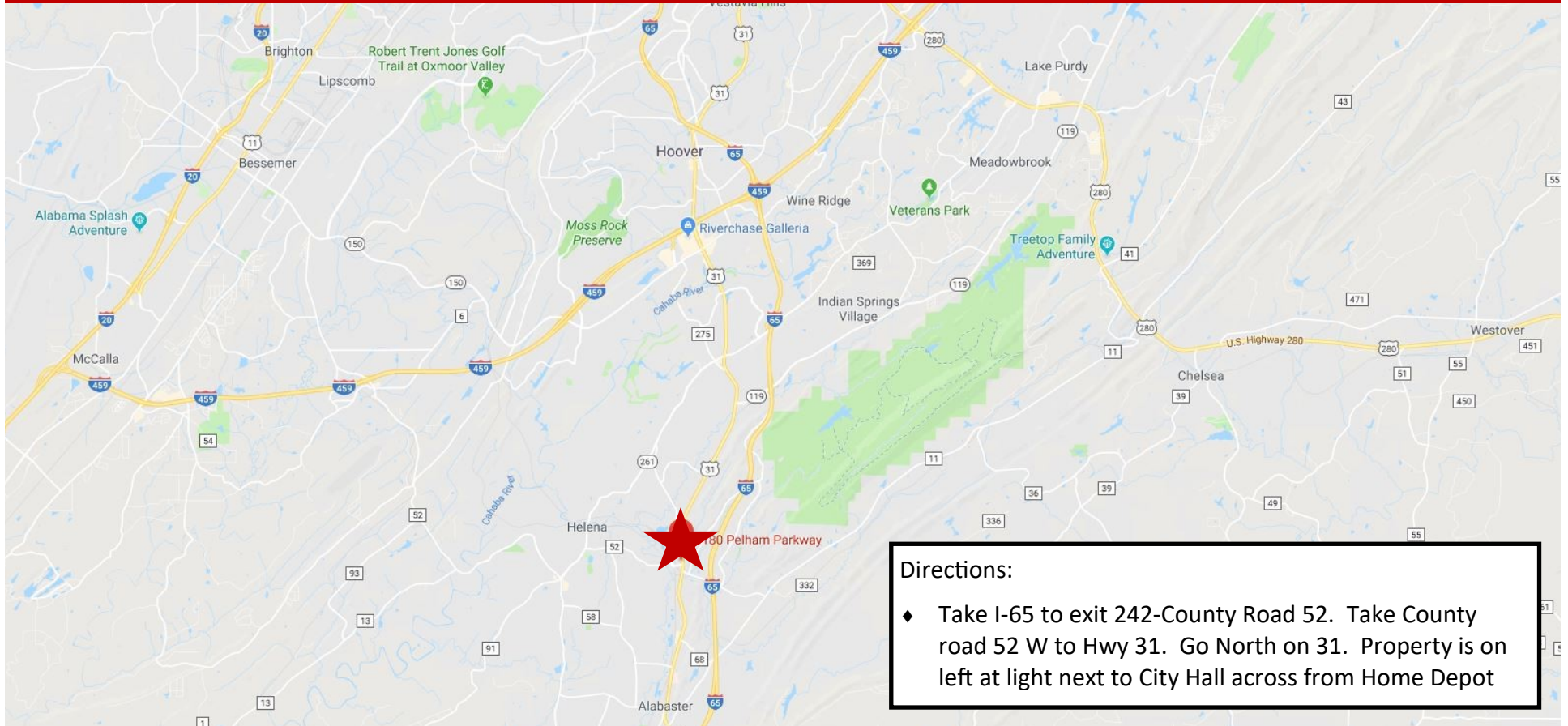
MARK DINAN
Commercial & Investment Real Estate



*All Information furnished regarding property sale, rental, or financing is from sources deemed reliable, but is not guaranteed.

LOCATION MAP

3186-D Pelham Parkway ♦ Pelham, AL ♦ 35124 ♦ Shelby County



Directions:

- ♦ Take I-65 to exit 242-County Road 52. Take County road 52 W to Hwy 31. Go North on 31. Property is on left at light next to City Hall across from Home Depot

Mark Dinan, MBA, CCIM

(c) 205-980-3434

(c) 205-243-3434

markdinan@bellsouth.net

MARK DINAN
Commercial & Investment Real Estate



*All Information furnished regarding property sale, rental, or financing is from sources deemed reliable, but is not guaranteed.

DEMOGRAPHICS

3186-D Pelham Parkway ♦ Pelham, AL ♦ 35124 ♦ Shelby County

DEMOGRAPHIC SUMMARY

3180 Pelham Pkwy, Pelham, Alabama, 35124 2
Ring of 5 miles

KEY FACTS

78,800

Population



29,489

Households

39.2

Median Age

\$81,176

Median Disposable Income

EDUCATION

3.7%

No High School Diploma



19.6%
High School Graduate



25.5%
Some College/
Associate's Degree



51.2%
Bachelor's/Grad/ Prof Degree

INCOME



\$102,262

Median Household Income



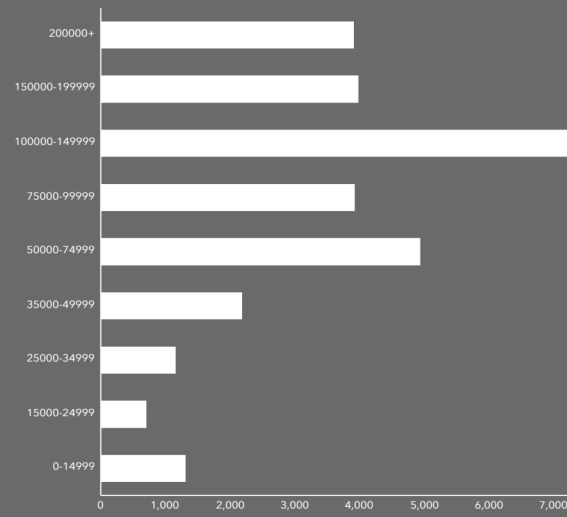
\$47,181

Per Capita Income

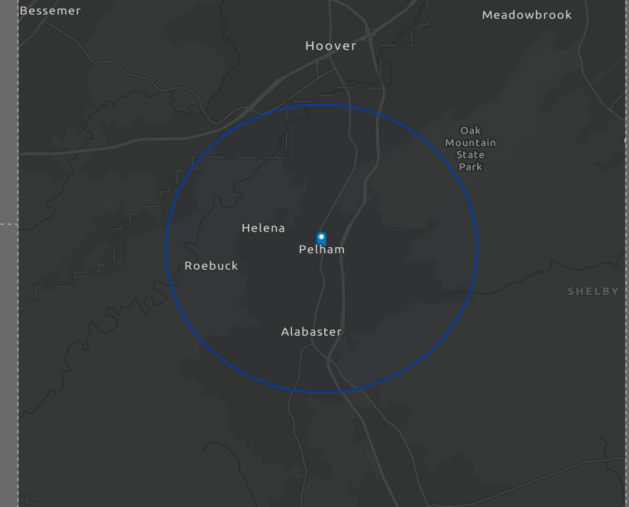


\$416,975

Median Net Worth



HOUSEHOLD INCOME



EMPLOYMENT



White Collar

73.4%



Blue Collar

14.7%



Services

12.7%

2.4%

Unemployment Rate

Mark Dinan, MBA, CCIM

(o) 205-980-3434

(c) 205-243-3434

markdinan@bellsouth.net

MARK DINAN
Commercial & Investment Real Estate



*All Information furnished regarding property sale, rental, or financing is from sources deemed reliable, but is not guaranteed.