

1000

EVENFLO DRIVE

BALLGROUND, GA 30107

Short Term Lease

Short Term
Space for Lease
113,270 SF

 CUSHMAN &
WAKEFIELD

// PROPERTY HIGHLIGHTS



TOTAL BUILDING: 283,874 SF



OFFICE: 4,281 SF



WAREHOUSE: 108,989 SF



CEILING HEIGHT OFFICE: 9'



CEILING HEIGHT WAREHOUSE: 29'



GRADE LEVEL DOCK DOORS: 4



RAMPED DOCK DOORS: 2

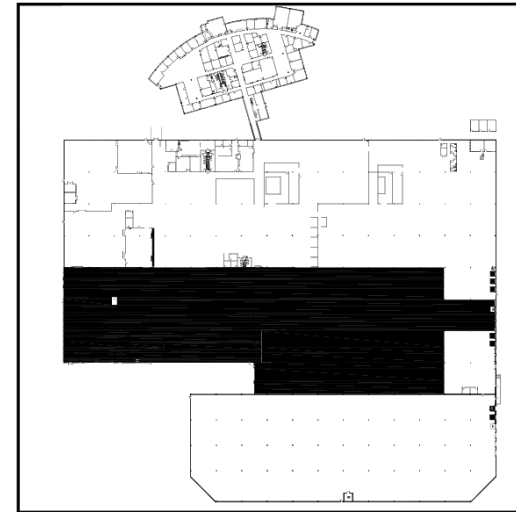


SPRINKLER: YES

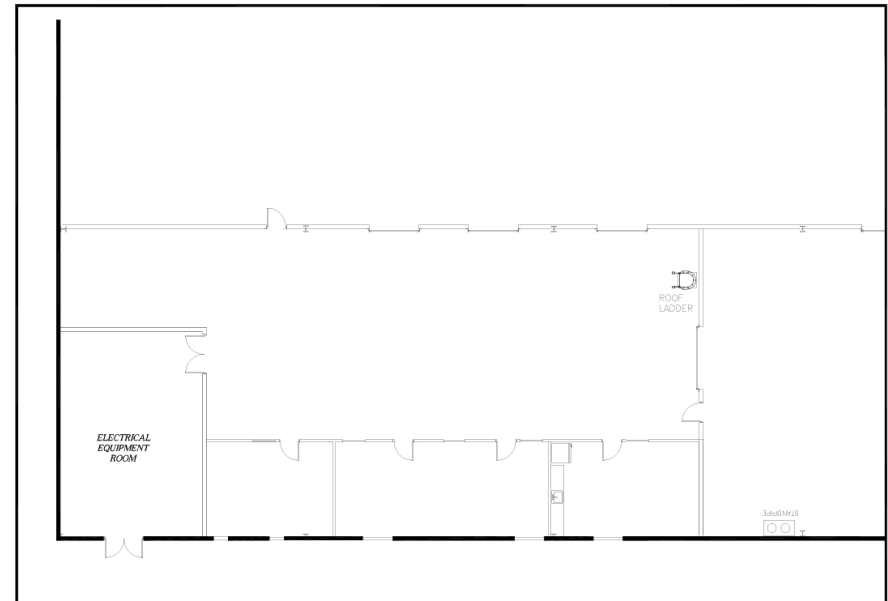


FIRE ALARM SYSTEM: YES

FULL BUILDING PLAN

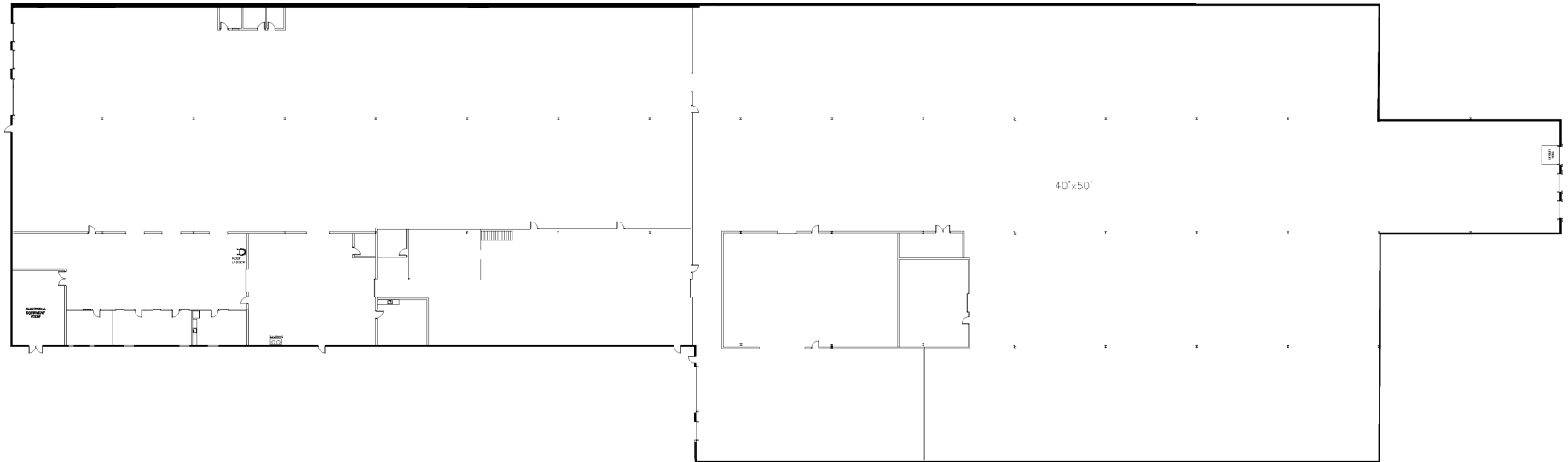


OFFICE SPACE



Not to Scale.

// FLOOR PLANS



Office SF	4,281 SF
Warehouse SF	108,989 SF
Total SF	113,270 SF
Ceiling Height Office	9'-0"
Ceiling Height Warehouse	29'-0"
Dock Doors Grade Level	4
Ramped Dock Doors	2
Dock Doors Dock Height	0
Sprinklers	YES
Fire Alarm System	YES

1000

EVENFLO DRIVE

BALLGROUND, GA 30107



// For more Information, please contact:

Pat Murphy
Managing Director
+1 770 853 8796

pat.murphy@cushwake.com

Tara A. Healy
Director
+1 404 682 3430

tara.healy@cushwake.com



©2026 Cushman & Wakefield. All rights reserved. The information contained in this communication is strictly confidential. This information has been obtained from sources believed to be reliable but has not been verified. NO WARRANTY OR REPRESENTATION, EXPRESS OR IMPLIED, IS MADE AS TO THE CONDITION OF THE PROPERTY (OR PROPERTIES) REFERENCED HEREIN OR AS TO THE ACCURACY OR COMPLETENESS OF THE INFORMATION CONTAINED HEREIN, AND SAME IS SUBMITTED SUBJECT TO ERRORS, OMISSIONS, CHANGE OF PRICE, RENTAL OR OTHER CONDITIONS, WITHDRAWAL WITHOUT NOTICE, AND TO ANY SPECIAL LISTING CONDITIONS IMPOSED BY THE PROPERTY OWNER(S). ANY PROJECTIONS, OPINIONS OR ESTIMATES ARE SUBJECT TO UNCERTAINTY AND DO NOT SIGNIFY CURRENT OR FUTURE PROPERTY PERFORMANCE.