

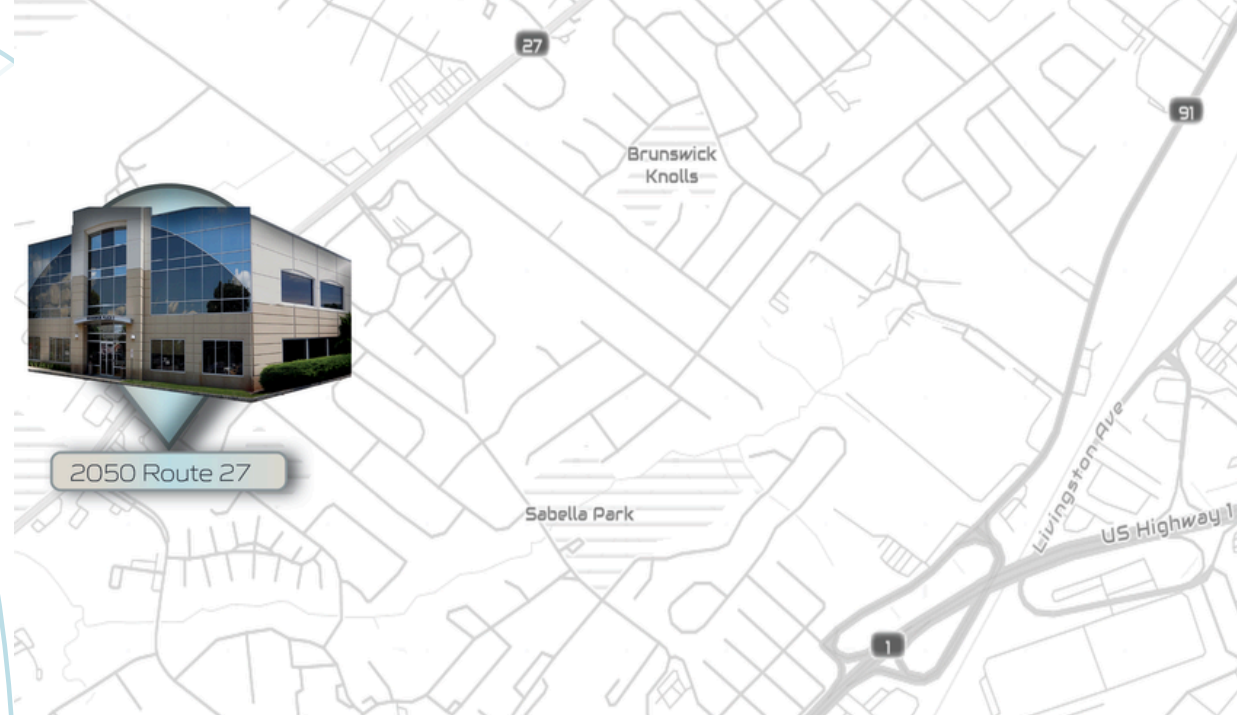


For lease

2050 Route 27, North Brunswick NJ | 3,500 sf | move-in ready

Located along the Route 27 corridor

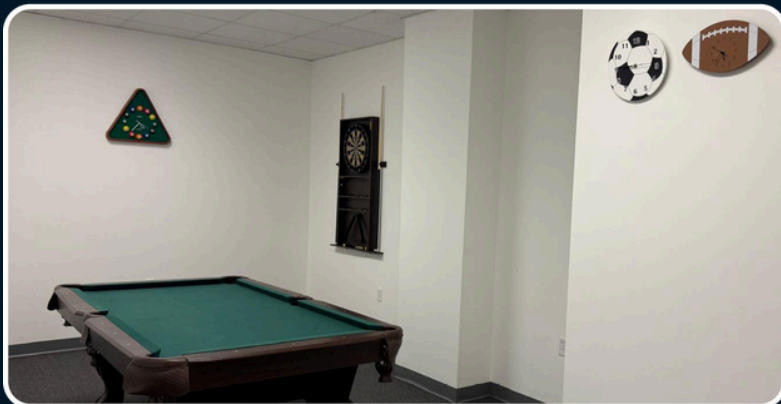
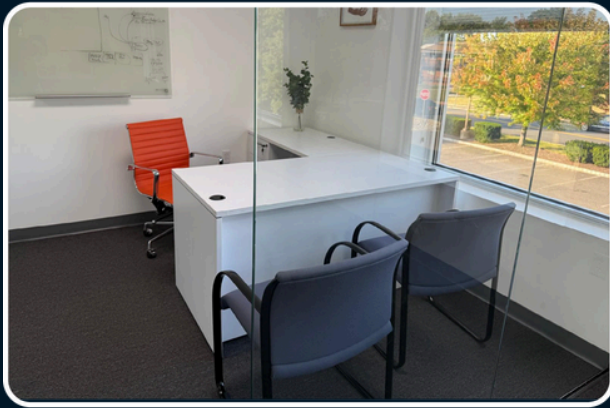
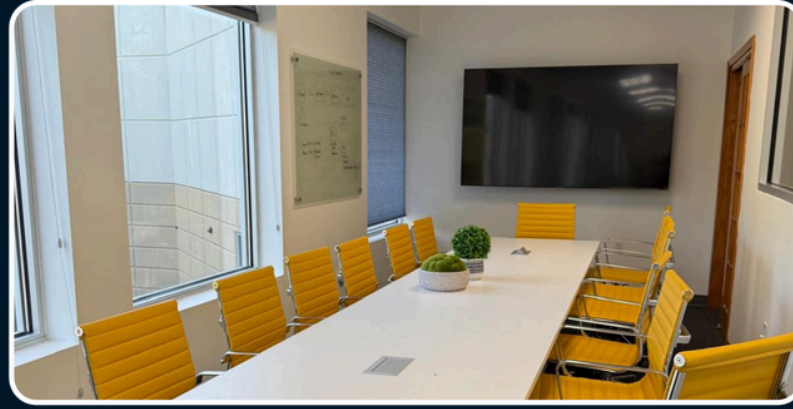
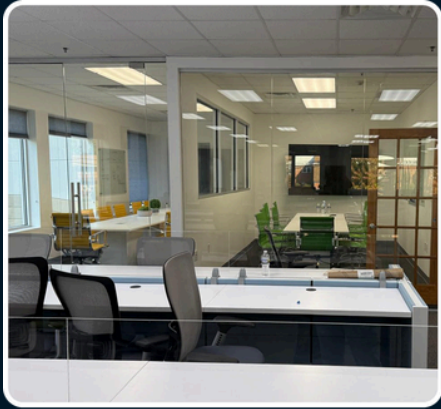
Property located off Route 27, minutes from Route 1,
Route 130, Route 18, I-95, and I-287



The Space

Specs	<ul style="list-style-type: none">• 3,500 sf on the 2nd floor• Suites 203 & 204• Furnished
Term & Rate	Negotiable
Availability	Immediate
Signage	Common tenant signage on Route 27

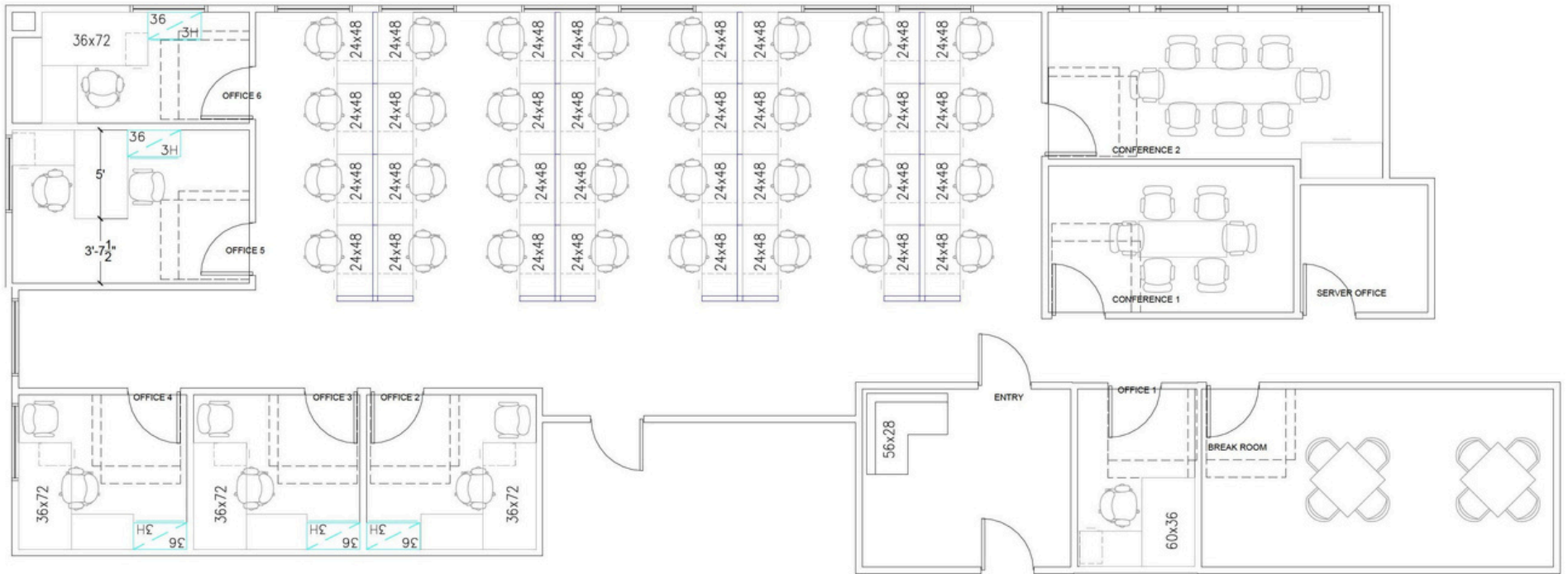




INTERIORS

*Take a look
around!*

FLOORPLAN



Includes 6 private offices, 2 conference rooms, IT room, cubicle space, reception area, break room, and pantry

Sheila Tara
sheila.tara@jll.com
+ 1 609 721 7313

Jones Lang LaSalle Brokerage, Inc.

Although information has been obtained from sources deemed reliable, neither Owner nor JLL makes any guarantees, warranties or representations, express or implied, as to the completeness or accuracy as to the information contained herein. Any projections, opinions, assumptions or estimates used are for example only. There may be differences between projected and actual results, and those differences may be material. The Property may be withdrawn without notice. Neither Owner nor JLL accepts any liability for any loss or damage suffered by any party resulting from reliance on this information. If the recipient of this information has signed a confidentiality agreement regarding this matter, this information is subject to the terms of that agreement. © 2023 Jones Lang LaSalle IP, Inc. All rights reserved.