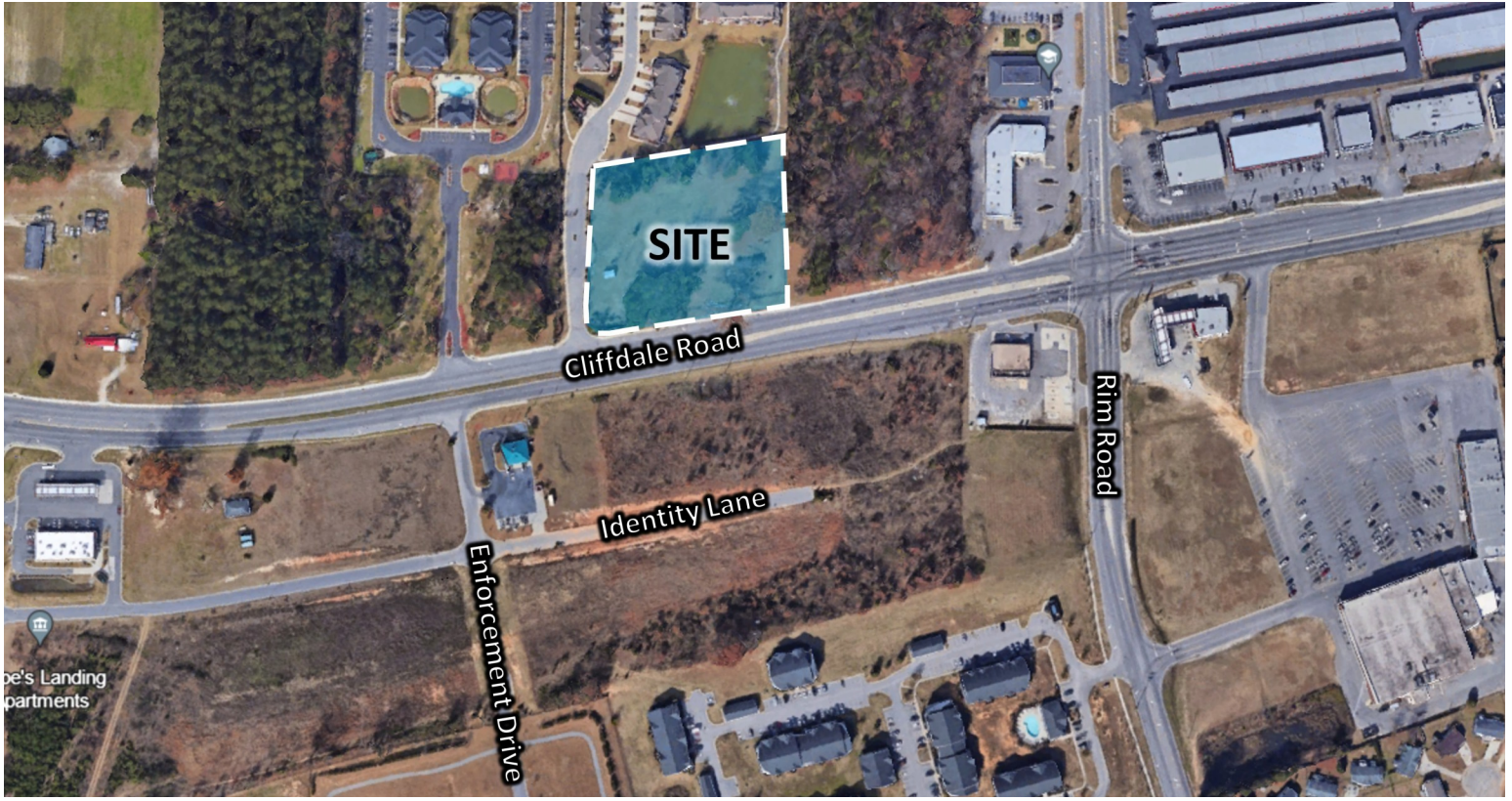


FOR SALE

8270 Cliffdale Road,
Fayetteville, NC 28314



2.52 AC COMMERCIAL LOT FOR SALE OFF CLIFFDALE ROAD

Offering Summary

- Sale Price: \$450,000
- Size: 2.52 +/- Acres
- Zoned: AR—Agricultural
- Frontage: 335 +/- Feet on Cliffdale Road

Property Description

±2.52-acre commercial site is centrally located on Cliffdale Road near the intersection of Rim Road. The property features +/- 335 Ft of frontage along Cliffdale Road & additional +/- 275 Ft of frontage on Braybrooke Place. With an average daily traffic count of 28,500 (NCDOT 2024), the site offers excellent visibility & accessibility. Currently zoned AR - Agricultural. Conveniently located less than 2 miles from the I-295 interchange at Cliffdale Road & less than 3 miles from the intersection of Cliffdale & Raeford Roads, the property provides quick access to major commercial corridors, including Skibo Road.



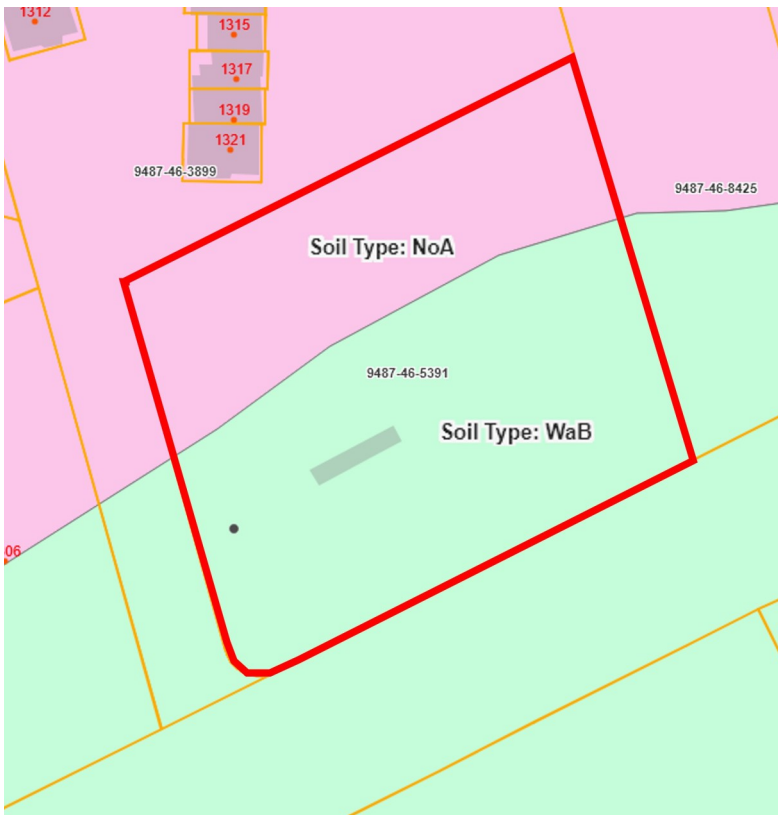
Franklin Johnson
910.818.8400 |
Franklin@Franklinjohnsoncommercial.com

FOR SALE

**8270 Cliffdale Road,
Fayetteville, NC 28314**



2.52 AC COMMERCIAL LOT FOR SALE OFF CLIFFDALE ROAD



Franklin Johnson

910.818.8400 |

Franklin@Franklinjohnsoncommercial.com