

QUADRATE CORPORATE PARK CONDOMINIUMS

MACOMB TOWNSHIP, MICHIGAN



2,860sf High Tech/Industrial Condominium Lean Energy Efficient Design

16041 Leone Drive, Macomb Township, Michigan

| | |
|------------------------------------|---|
| Total Available Sq. Ft.: | 2,860 |
| Total Shop Sq. Ft.: | 2,260 |
| Total Office Sq. Ft.: | 770 |
| Lease Rate: | \$3,100.00 Modified Gross |
| Zoning: | (MI) Industrial |
| Acreage: | NA |
| Ceiling Height: | 18.5' |
| Truckwell(s)/Grade Door(s): | 0/1 |
| Cranes: | Possible |
| Power: | 480 Volt 3 phase |
| Heat Type | Office - Forced Air Shop- Radiant tube |
| Sprinklers: | No |
| Total Parking: | Ample |
| Available: | Immediate |



Comments: Highly desirable end unit with abutting parking and windows in shop. Very clean space in a pristine corporate park. Unit consist of aprox. 770sf of office, HUGE 770SF Mezzanine with kitchenette (2) restrooms and wide open shop with Air conditioning 480V power



CONDO PARK NO.1

Michael D'Agostini

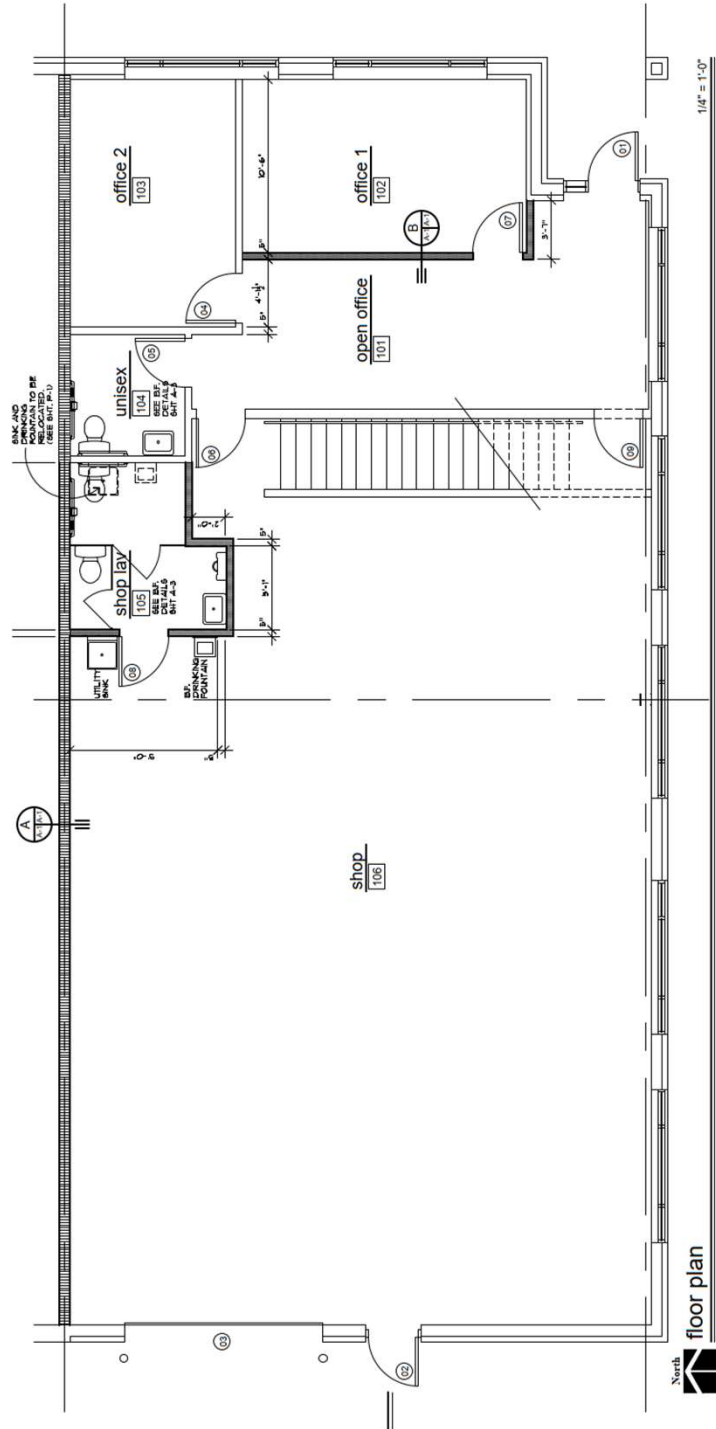
Office: 586.677.1111

Mobile: 810.560.4220

www.quadratecompanies.com

16041 Leone Drive, Macomb Township, Michigan

For Lease



Michael D'Agostini

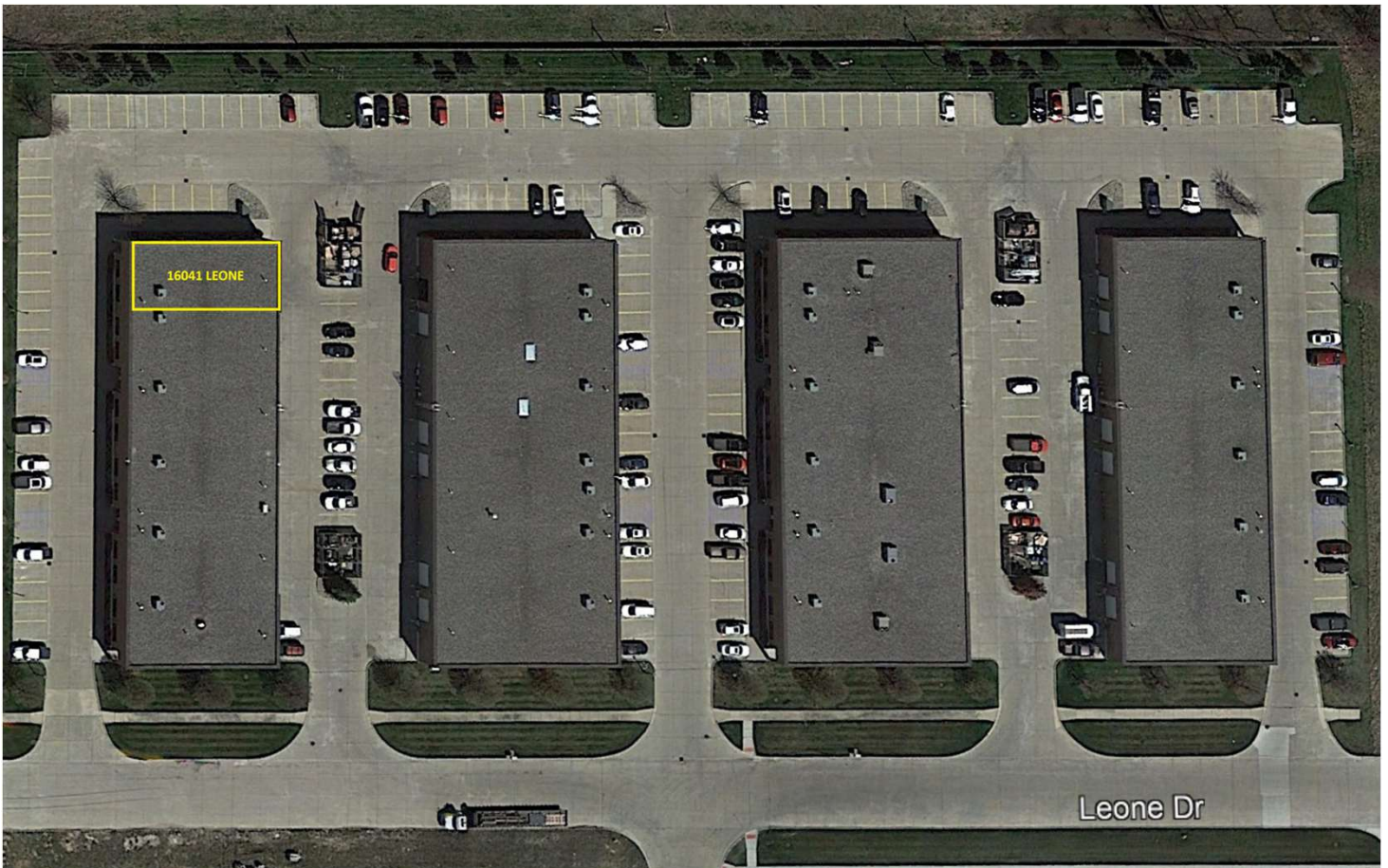
miked@quadratedevelopment.com

www.quadratecompanies.com

Office: 586.677.1111

Mobile: 810.560.4220

16041 Leone Drive, Macomb Township, Michigan



Michael D'Agostini

miked@quadratedevelopment.com

www.quadratecompanies.com

Office: 586.677.1111

Mobile: 810.560.4220

16041 Leone Drive, Macomb Township, Michigan



Michael D'Agostini

miked@quadratedevelopment.com

www.quadratecompanies.com

Office: 586.677.1111

Mobile: 810.560.4220