



 **THEATRE**
  **district**

140 2ND STREET | PETALUMA, CA

FOR LEASE THEATRE SQUARE RETAIL





Vibrant Retail Space in the Heart of Downtown Petaluma

JONES LANG LASALLE BROKERAGE, INC. REAL ESTATE LICENSE #: 01856260



PROPERTY HIGHLIGHTS

DESCRIPTION

-  Class "A" building with high quality finishes throughout
-  Annual average daily traffic count at C Street and Petaluma Blvd is $\pm 17,120$ vehicles per day
-  Abundant and convenient parking nearby
-  Prompt decision-making & uncomplicated negotiations by local, reputable owner



SUITE 104: $\pm 2,024$ SF

ADDRESS: 140 2nd Street, Petaluma

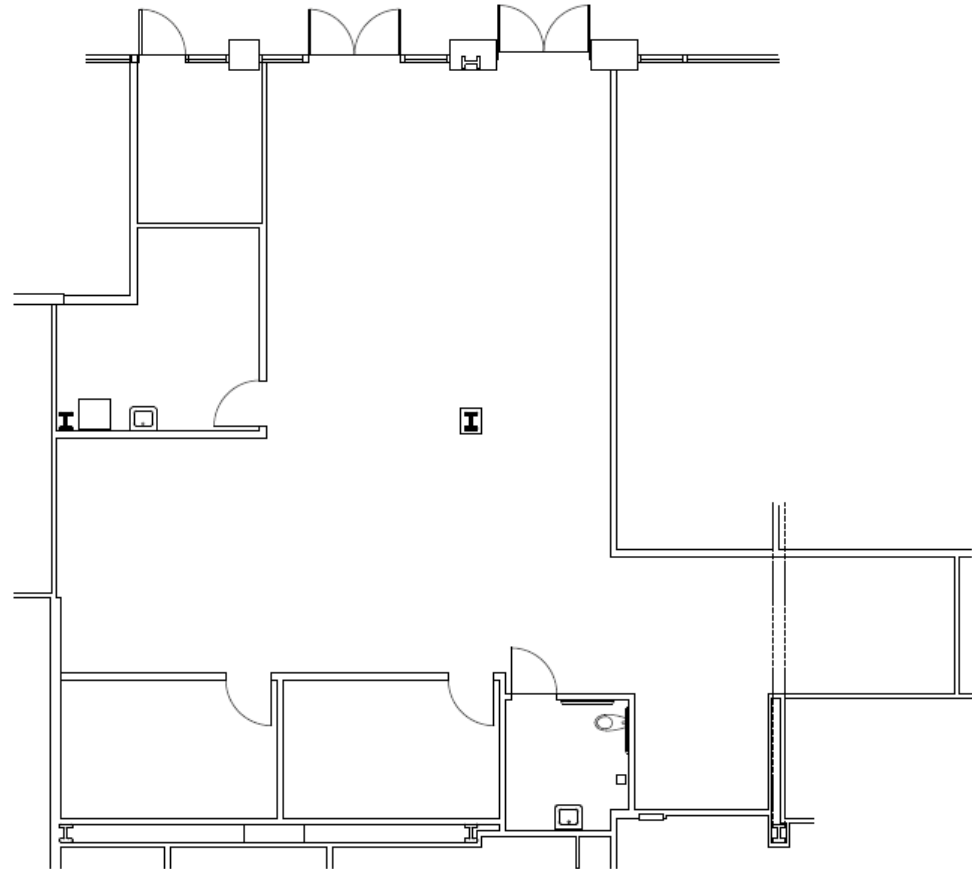
TYPE: Retail

OWNED & MANAGED BY: Basin Street Properties

SUITE 104

±2,024 SF

- ±2,024 SF retail space
- (3) private rooms
- (2) double-door entrances
- Available fully furnished
- In-suite restroom
- High identity location
- Excellent signage opportunity



LOCATION HIGHLIGHTS

In the heart of charming Petaluma you will find the Theatre District. The region's premier open-air dining and retail destination venue, featuring local downtown shopping, savory eateries and entertainment.



www.theatre-district.com



2nd Street



Petaluma Boulevard S





FOR LEASE

THEATRE SQUARE | PETALUMA, CA

For more information,
please contact:

Tony Sarno
+1 707 217 7196
RE Lic# 01430933
tony.sarno@jll.com

Glen Dowling
+1 415 299 6868
RE Lic# 00890450
glen.dowling@jll.com

