

SPACE AVAILABLE FOR LEASE

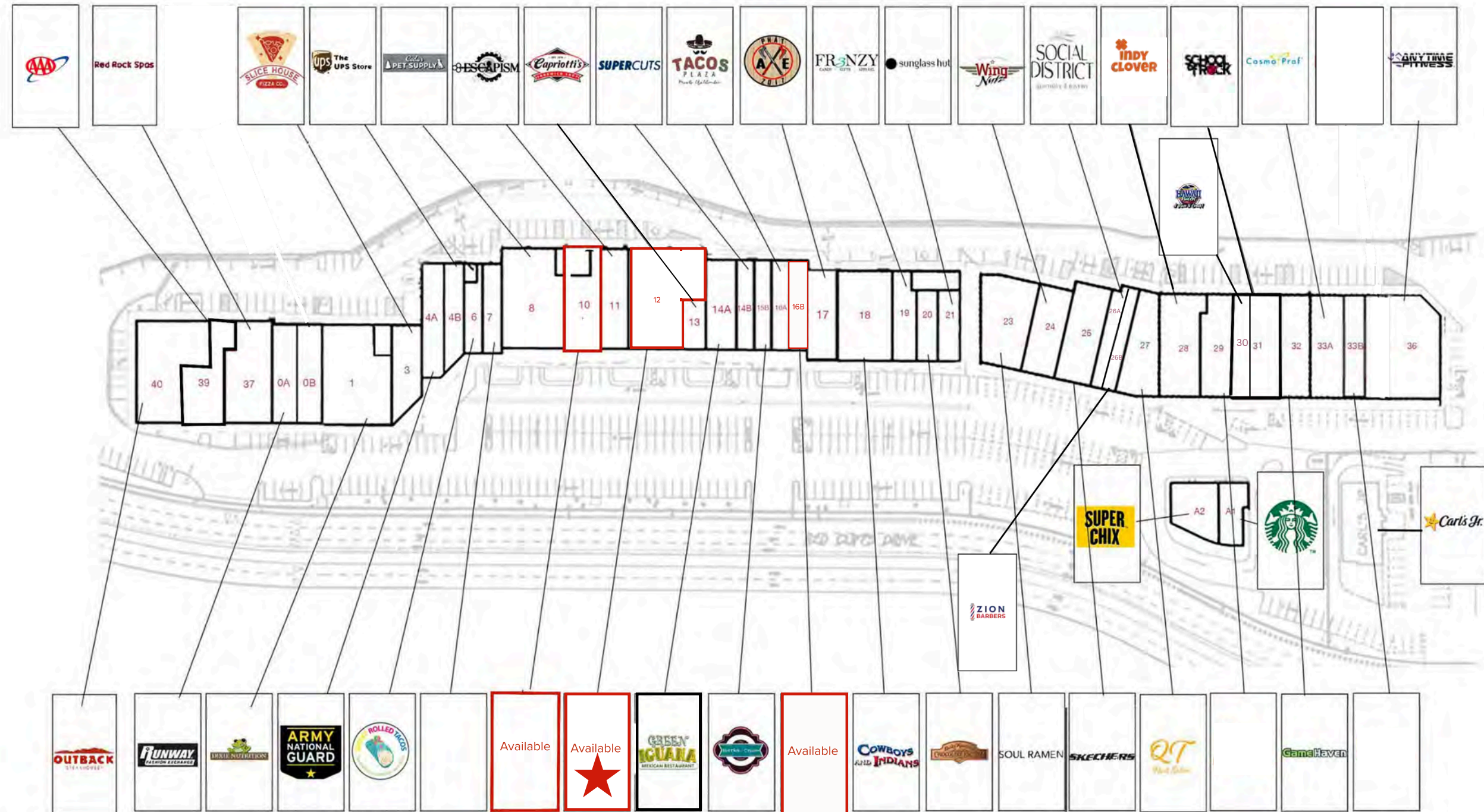


WHITECROWREALESTATE.COM

Shellee Haines

Real Estate Broker & Commercial Agent

# Retailer Map



# Suite 12



## Highlights

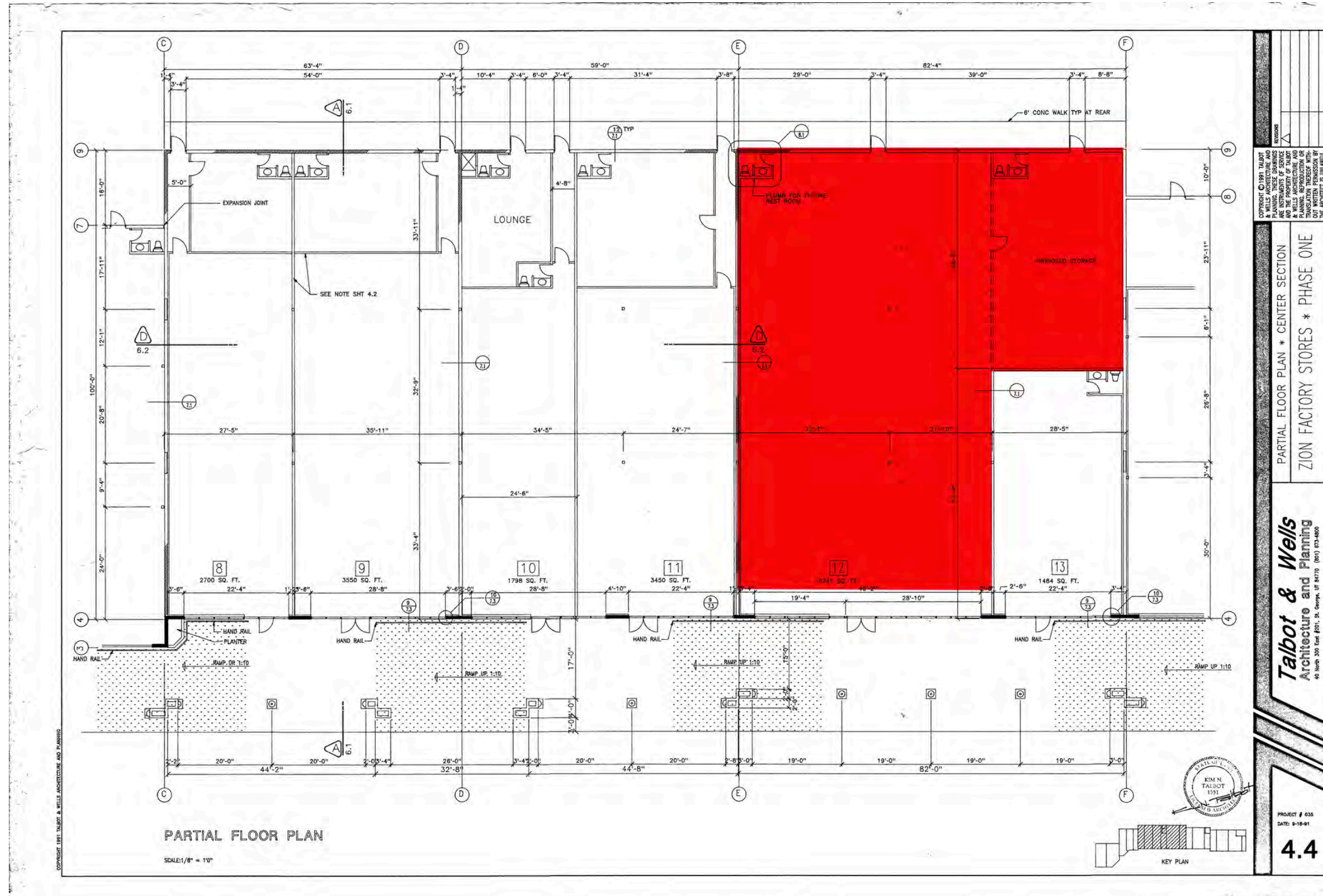
- Retail Space
- Property Highlights
- ±6,741 SF retail space available
- Located in The Shoppes at Zion with instant I-15 access.
- Strong local and tourist traffic year-round.
- On-site property management and active tenant marketing program.
- Flexible commercial zoning for a variety of retail uses.
- Tenant improvement allowance available.
- Clean, well-maintained center with ample parking.

## Description

Prime retail suite available in a bright, well-maintained center located in the heart of town. This property offers instant access to Interstate 15 and benefits from both strong local traffic and consistent tourist activity. The center features a complimentary tenant mix designed to support visibility and customer flow, along with on-site property management for responsive service and upkeep.

A marketing program is available to help drive awareness and support tenant success. This is a strategic location for retail, service, and destination-based businesses seeking convenience, exposure, and professional management

# Floor Plan Suite 12



# Interior Suite 12

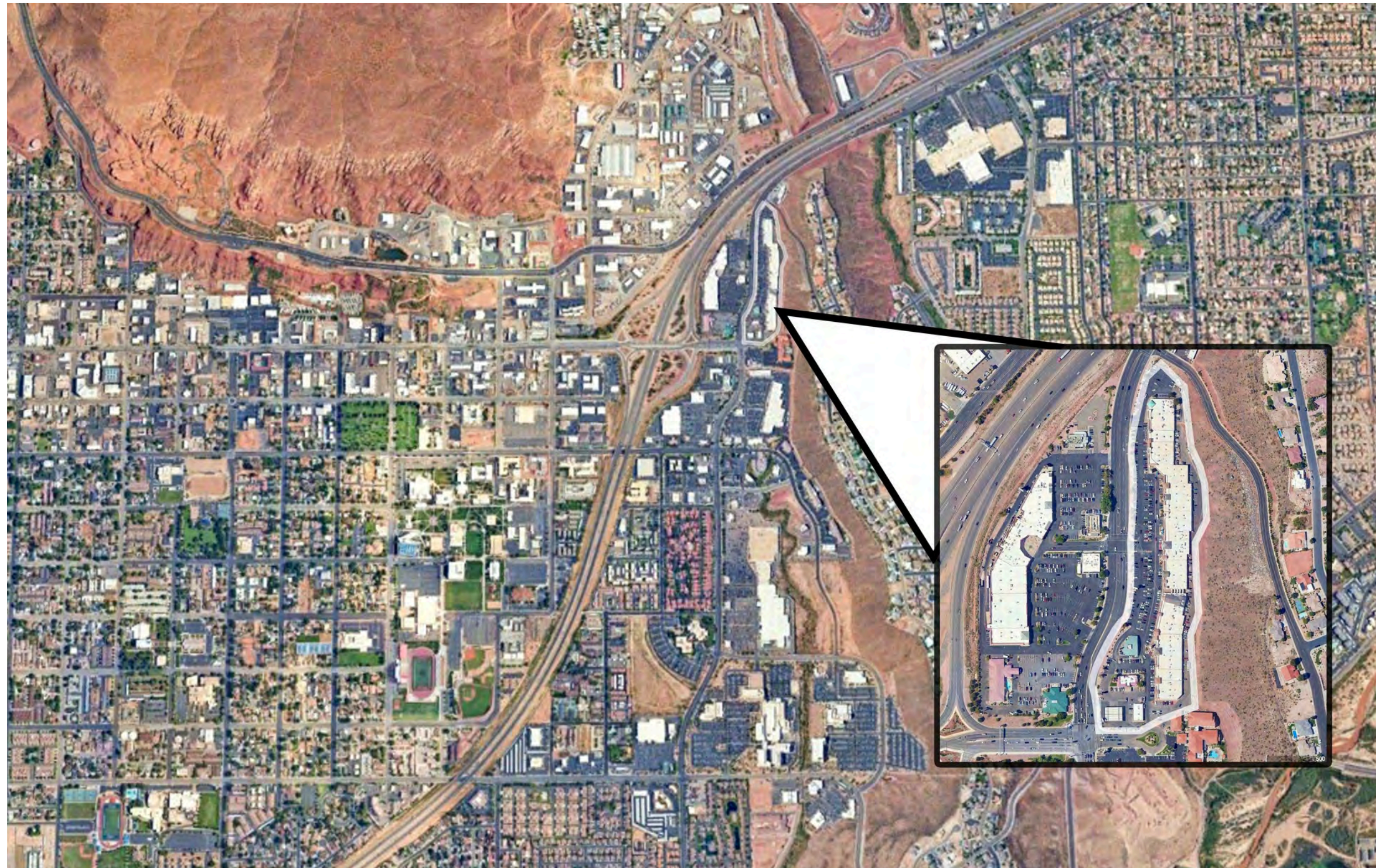


# Exterior Suite 12



# Map

---





## SHELLEE HAINES

Real Estate Broker

[shellee@whitecrowrealestate.com](mailto:shellee@whitecrowrealestate.com)  
(435) 229-2522

