

# castle

CREEK  
CORPORATE PARK

UNCOVER EXCELLENCE  
in Indianapolis' premier lifestyle office park



CCIII - 8720 CASTLE CREEK PKWY | CCIV - 5875 CASTLE CREEK PKWY  
CCV - 5750 CASTLE CREEK PKWY | CCVI - 5975 CASTLE CREEK PKWY

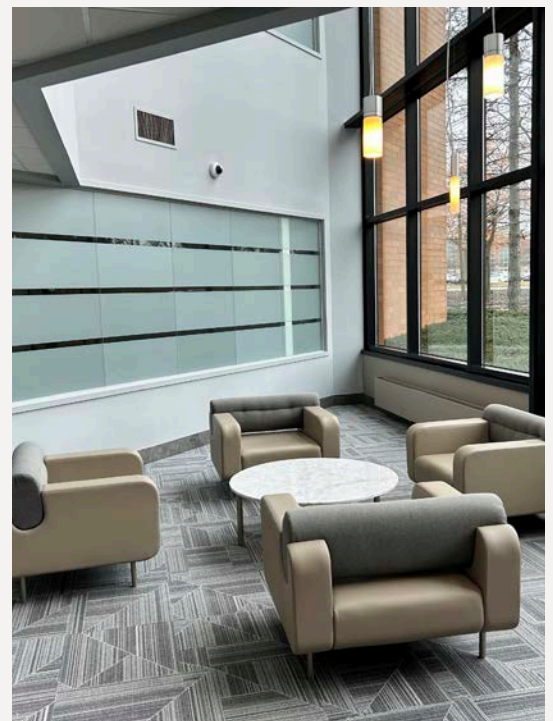


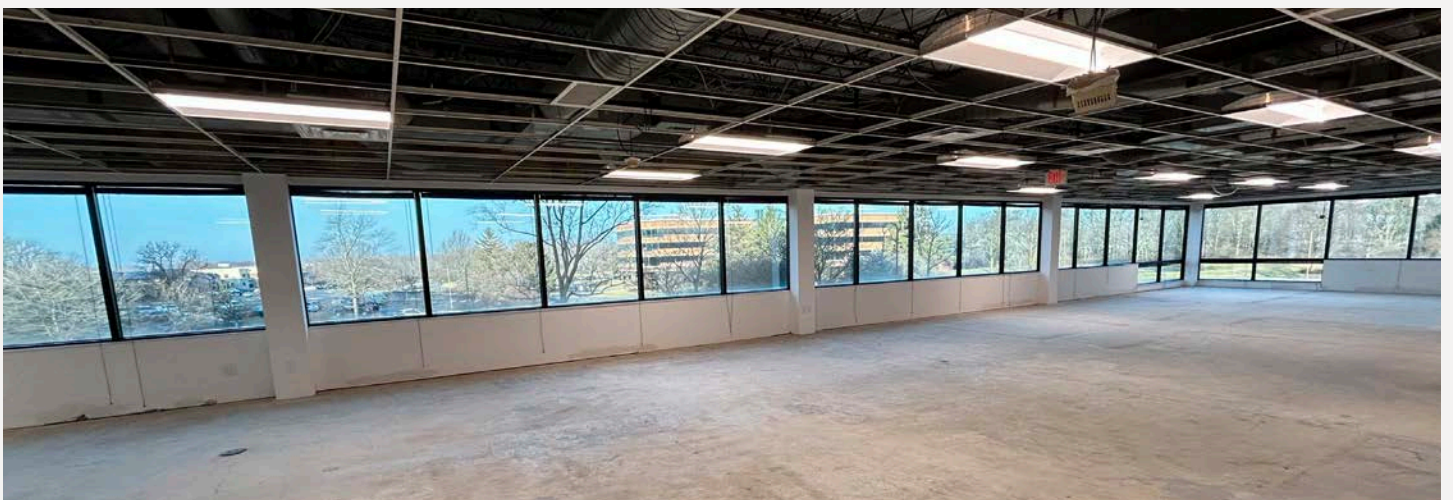
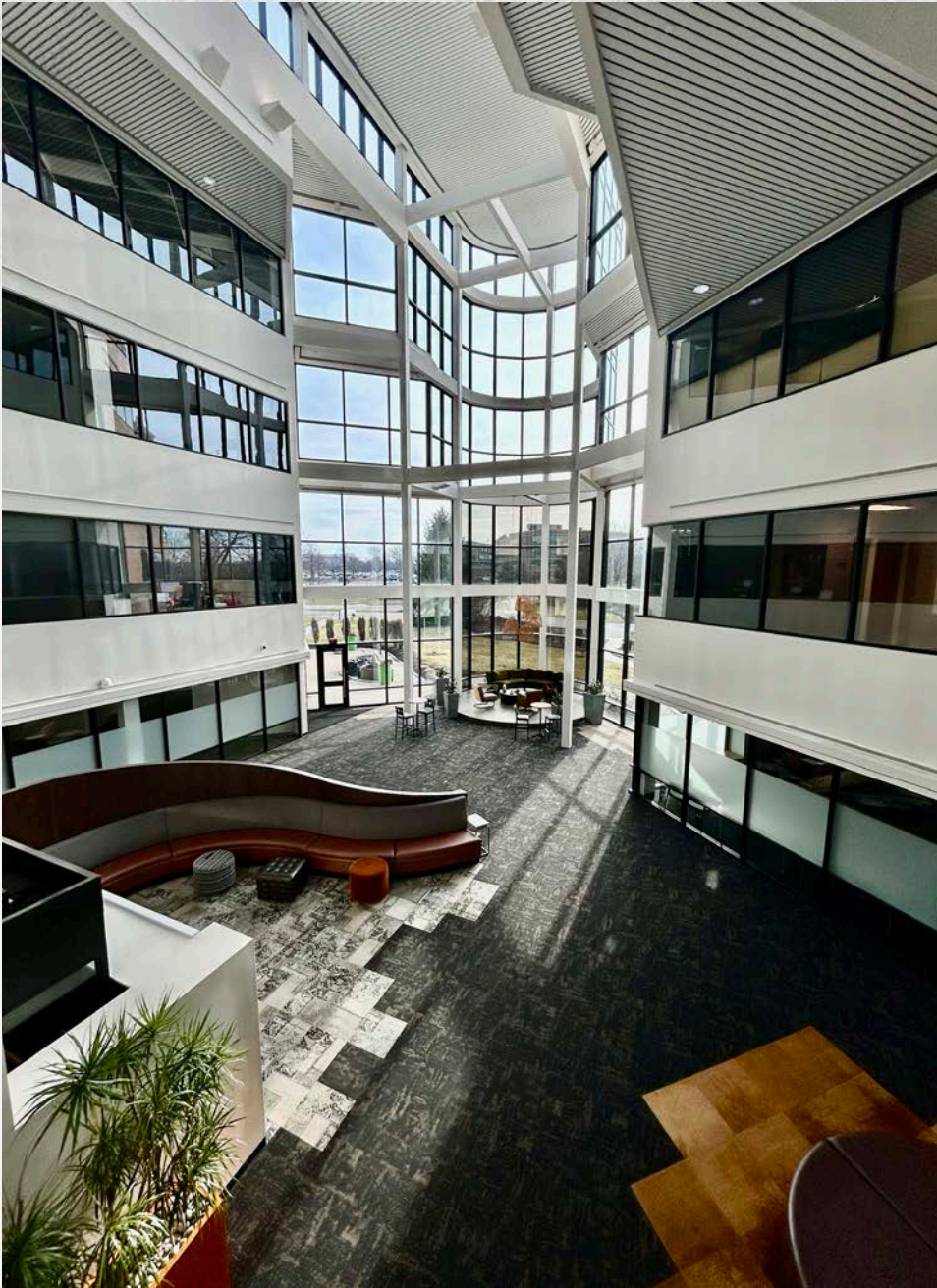
PROPERTY HIGHLIGHTS

# A NEW ERA

in workspace amenities

- Striking 4-story glass atriums creating an impressive architectural feature
- Fitness trail encircling all buildings for an invigorating exercise experience
- Abundant parking spaces guarantee hassle-free access for tenants and guests
- Prime location adjacent to Lifetime Fitness, offering convenient access and discounts to top-notch fitness facilities
- Flexible rental rates





# UNCOVER

your ultimate workspace



## LOUNGE

Reimagined lobby areas



## WALK/RUN TRAIL

Lined around the full campus for a walk or run!



## ACCESS

Multiple access points



## OUTDOOR SETTINGS

Spend time re-energizing outside



## WORKOUT STATIONS

Outdoor fitness equipment available



## CONFERENCE ROOMS

Various conference rooms to fit your meetings' needs



## LIFETIME FITNESS

Membership discount for tenants



## OUTDOOR DINING TABLES

Picnic tables perfect for meetings or lunch outside



SURROUNDED BY

# AMENITIES

your ideal workspace awaits

62

RESTAURANTS

39

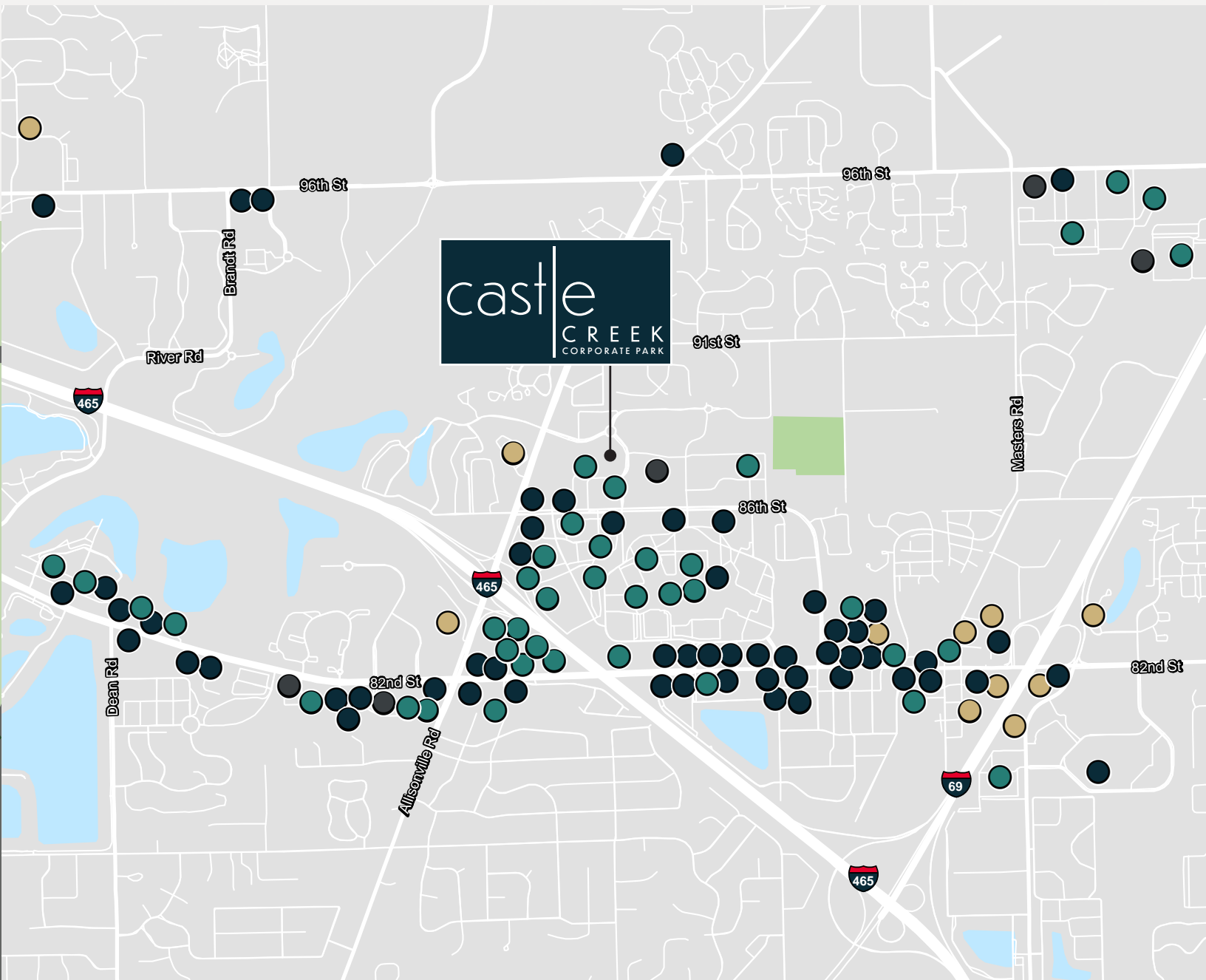
SHOPS/RETAIL

5

GYMS/FITNESS

11

HOTELS



# castle

CREEK  
CORPORATE PARK



## FOR MORE INFORMATION, PLEASE CONTACT:

**DAVID A. MOORE, CCIM, SIOR**  
Managing Director  
Mobile: 317-690-0617  
[david.moore@cushwake.com](mailto:david.moore@cushwake.com)

**MATT BOYD, CCIM**  
Associate Broker  
Mobile: 317-985-2693  
[matt.boyd@cushwake.com](mailto:matt.boyd@cushwake.com)

