



# CLASS A OFFICE SPACE 444 EXECUTIVE CENTER BLVD. EL PASO-WEST/CENTRAL



## PROPERTY HIGHLIGHTS

- Two Story Office Building with 43,389 SF of Office Space
- Minutes from Downtown El Paso with Frontage on Executive Center Blvd.
- All Inclusive Utilities
- HUB Zone Certified for Tenants with Government Clients
- Free, Ample Building Adjacent Parking
- Janitorial: General Cleaning & Trash Service Available
- Signage: Suite & Directory, with Additional Building & Road Signage Available
- State of the Art, Computerized Heating (Gas) & Cooling (Refrigerated) Systems Controlled by Management Office at a Comfortable Setting

## ON-SITE PROPERTY MANAGEMENT & MAINTENANCE

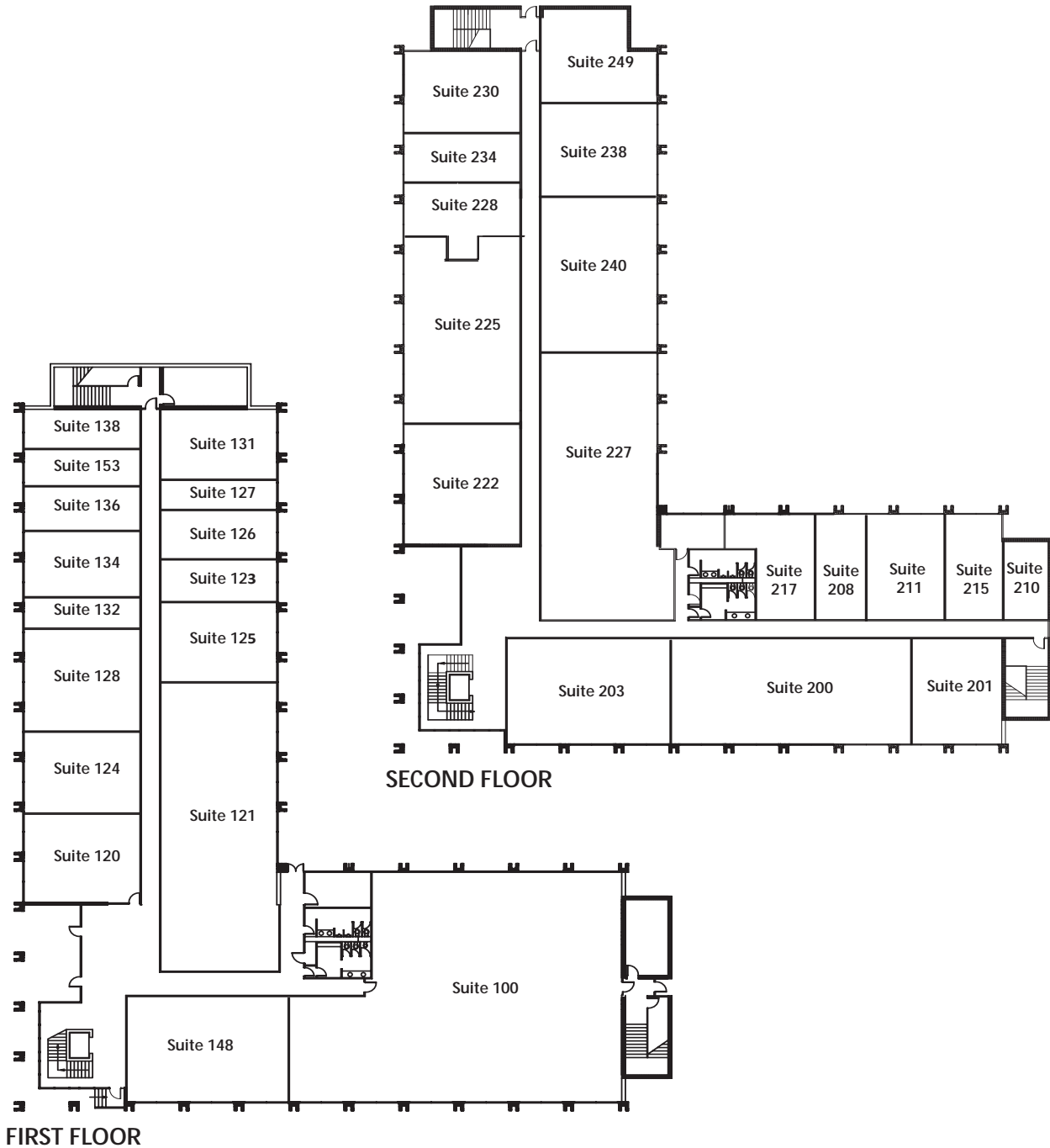
- Full staff of qualified professional personnel to maintain the interior and exterior areas of the building
- 24 hour answering service available for emergencies

## NEWLY UPDATED COMMON AREA





CLASS A OFFICE SPACE  
**444 EXECUTIVE CENTER BLVD.**  
EL PASO-WEST/CENTRAL

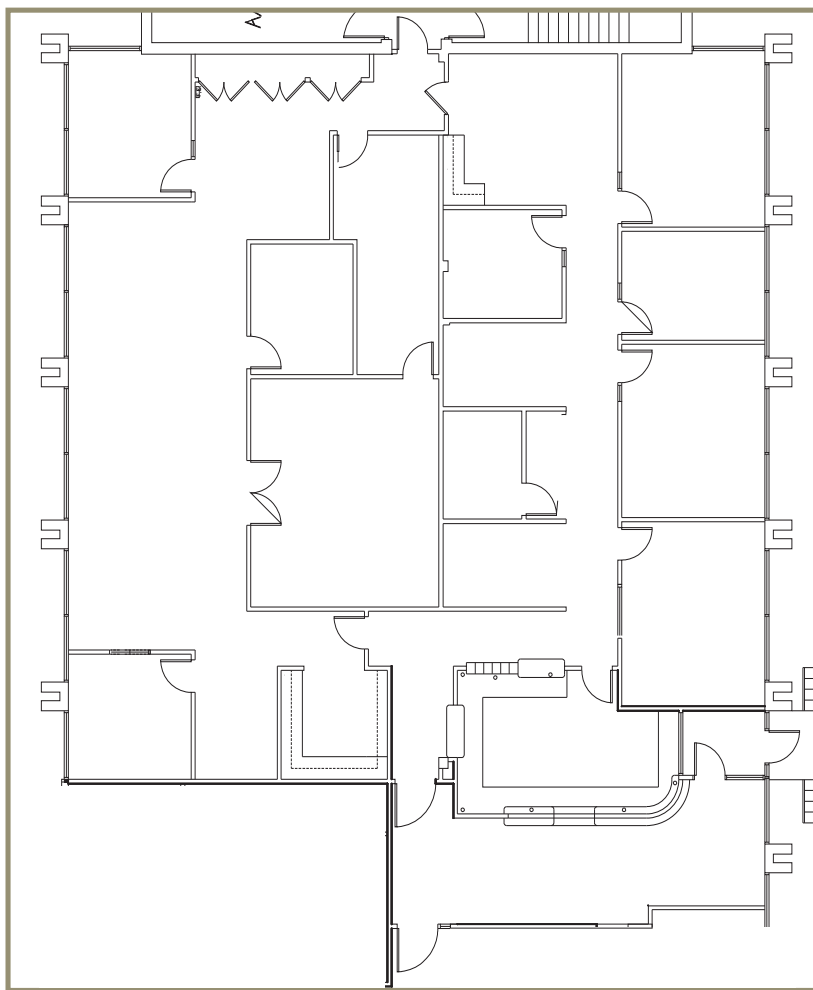




## SUITE 100

444 Executive Center Blvd., EL PASO-WEST/CENTRAL

**IMMEDIATELY  
AVAILABLE FOR LEASE  
APPROX. 6,582 RSF  
PROFESSIONAL OFFICE**



### **CLASS A OFFICE SPACE**

- Large Reception with Built-in Service Desk and Large Waiting Area
- 10+ Large Private Offices
- Multiple Meeting Spaces
- Open Workspace for Cubicles
- Built-in Copy/Filing Stations
- Employee Break Area with Sink, Dishwasher, and Refrigerator
- Private Side & Rear Entries
- Lots of Storage
- Existing High-End Commercial Grade Finishes
- Large Windows, Great View
- Conveniently Located on the First Floor of a Quiet Hallway Near Restrooms



EP SHALOM MANAGEMENT, LLC  
444 EXECUTIVE CENTER BLVD., SUITE 120, EL PASO, TX 79902  
T 915-532-3456 F 915-532-3458

[www.epleasing.com](http://www.epleasing.com)  
[info@epleasing.com](mailto:info@epleasing.com)