



SCHRAFFET'S

City Center

529 MAIN ST, CHARLESTOWN

AVISON
YOUNG



This **legendary**
building was formerly
the manufacturing site
of the **iconic**
SCHRAFFT'S
CANDY FACTORY



The building was purchased and renovated by The Flatley Company in 1984 and is considered a Boston landmark with its distinctive neon sign and beautiful water views.

The 529 Main Street building has a beautiful new entrance, lobby, waterfront and landscaping upgrades.



The Schrafft Center complex also includes an office building at 465 Medford Street and an industrial building at 425 Medford Street. The 465 Medford Street building has recently been renovated with a brand new lobby, entrance and landscaping upgrades.



BUILDING amenities



- On-site property management team
- Indoor & outdoor covered bike storage at 529 Main Street & 465 Medford Street
- Seasonal Rooftop Farming
- Sponsored events at building, & adjacent athletic fields
- Waterfront walking trail

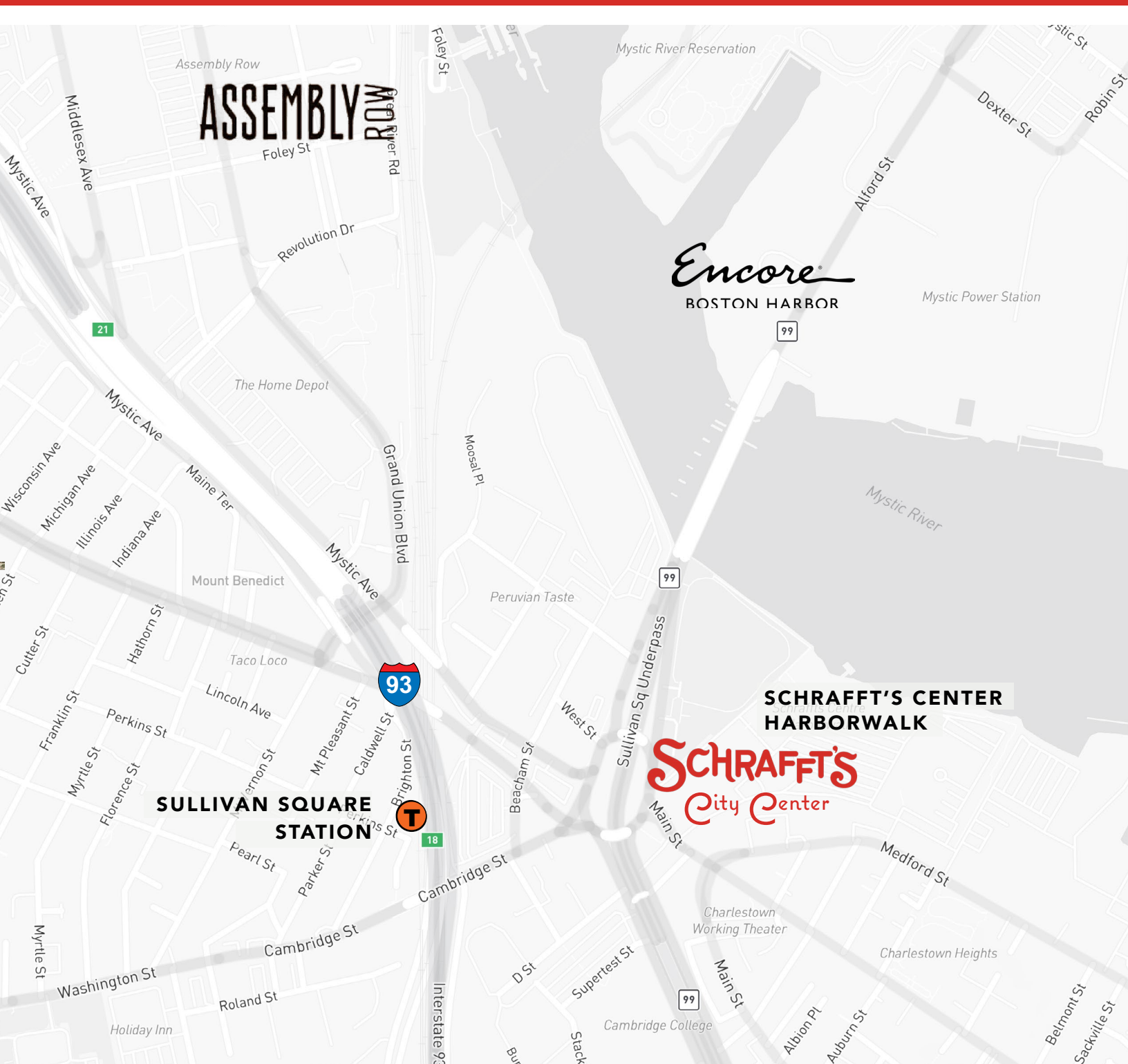


- FIT Gym
- Cafeteria – hours of operation:
7 am- 2 pm
- Coffee Bar – hours of operation:
7 am- 2 pm
- Bright Horizons Child Care Center



Schrafft's boasts a prime location with convenient access to a variety of shopping options, from large retail centers to boutique shops, catering to both daily necessities and specialty items. Nearby, a diverse selection of restaurants, ranging from cozy cafes to upscale dining establishments, provides a wide range of culinary experiences.

For visitors or business travelers, several hotels in the vicinity offer comfortable lodging with easy access to the office park. Parents can find nearby childcare facilities providing professional care and educational activities.



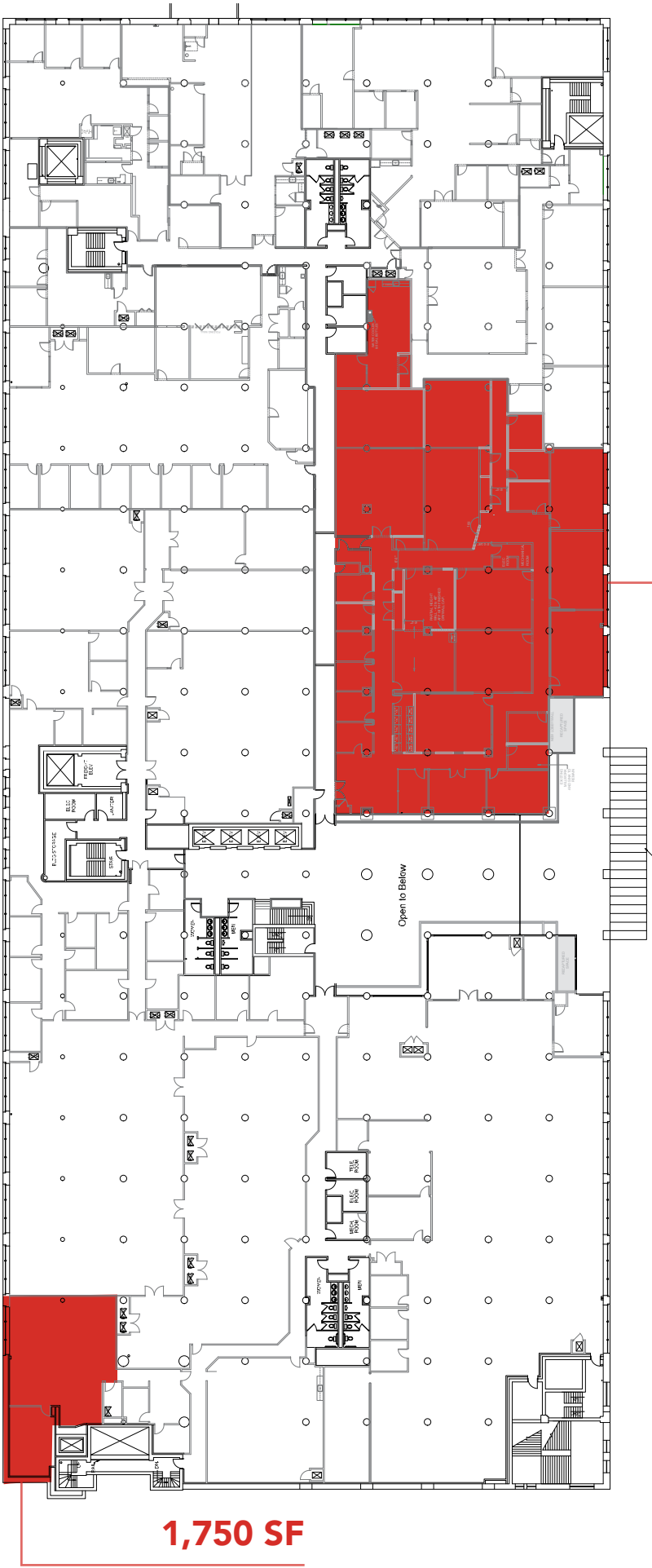
LOCAL Amenities

- Adjacent to the Sullivan Square MBTA Station
- Just over ¼ mile to nearest BLUEbikes station
- Easy access to I-93, downtown Boston, Kendall Square & Logan Airport
- Close proximity to the Assembly Square shopping district & Encore Boston Harbor Casino



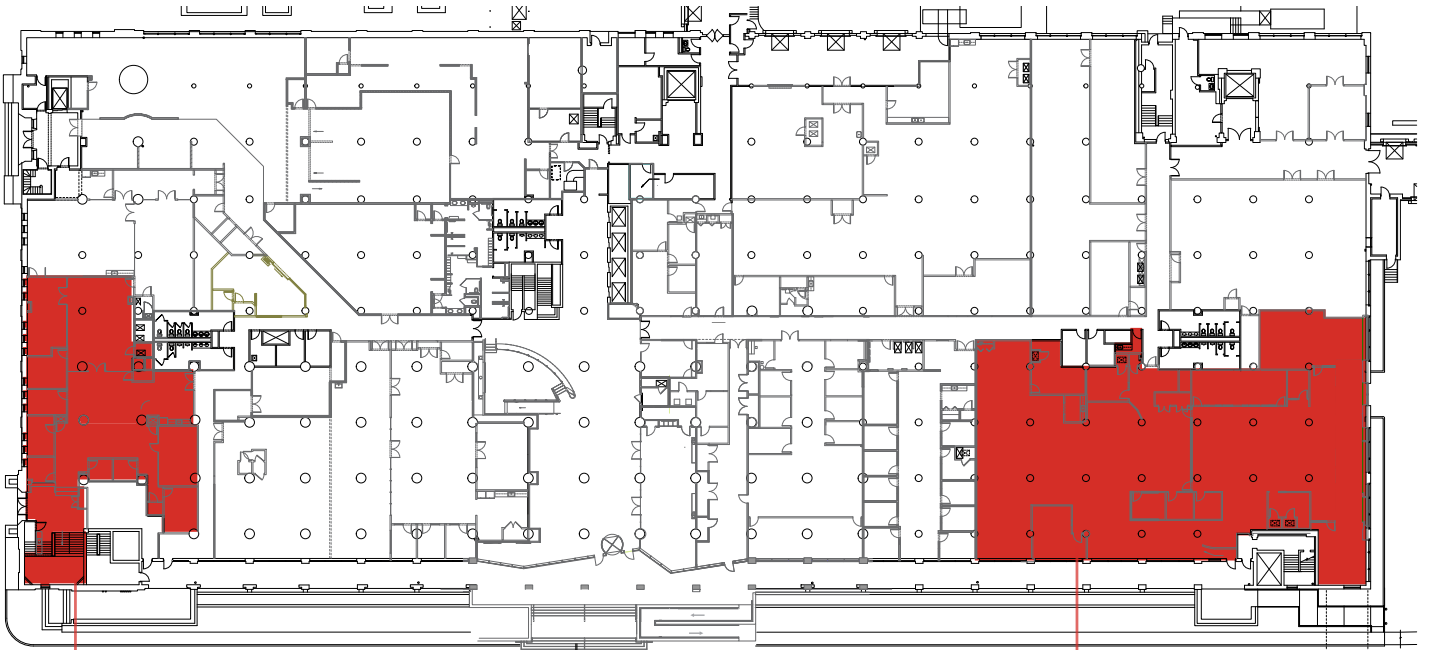
FIRST FLOOR
mezzanine

TWO SUITES
AVAILABLE



15,608 SF
SUITE 1105

1,750 SF
MEZZ



3,630 SF - 6,853 SF

SUITE 1025

FIRST FLOOR

13,457 SF

SUITE 1014

**TWO SUITES
AVAILABLE**



SECOND FLOOR

12,425 SF - 20,049 SF

SUITE 2212

**CONTIGUOUS
SUITES AVAILABLE**

4,328 SF

SUITE 3304

7,800 SF

SUITE 3303

12,901 SF

SUITE 3301

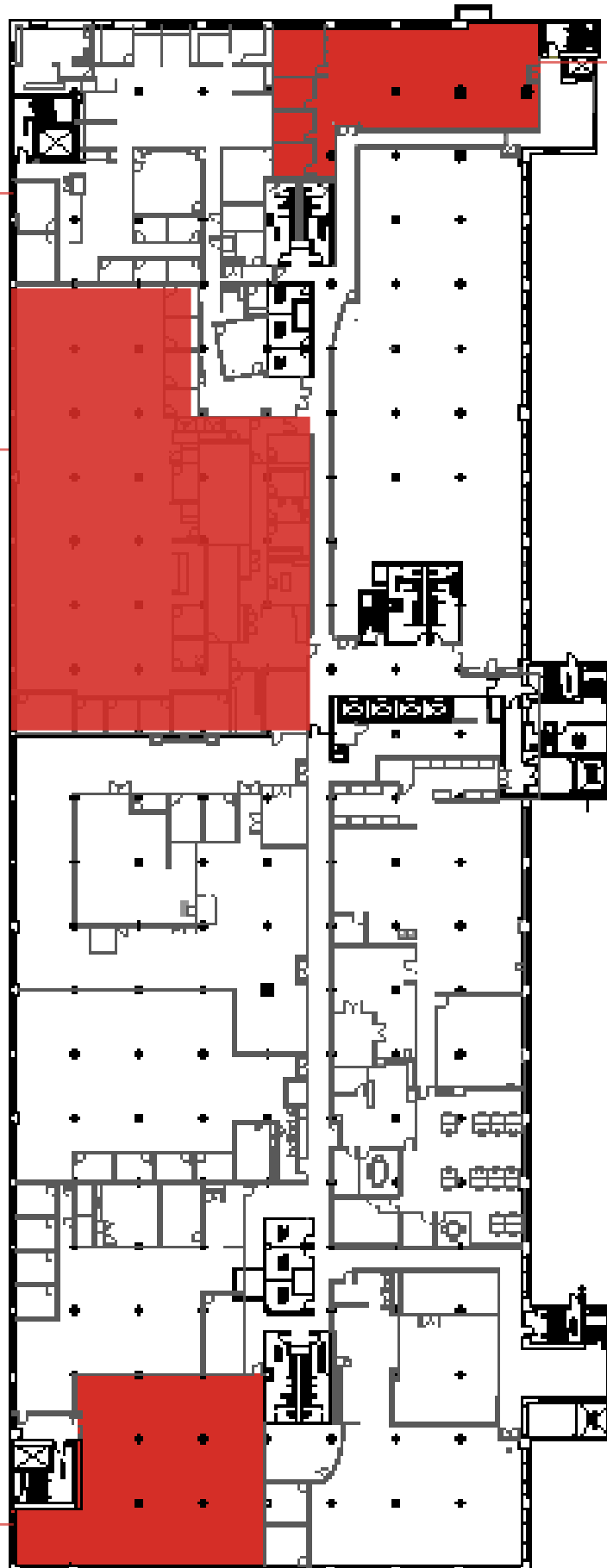
THIRD FLOOR

FOUR SUITES AVAILABLE

*Suites 3304, 3303,
and 3301 can be
combined to total
25,029 SF

5,649 SF

SUITE 3321





FIRST FLOOR | MEZZANINE | SUITE 1105



THIRD FLOOR | SUITE 3304



THIRD FLOOR | SUITE 3302



THIRD FLOOR | SUITE 3304



THIRD FLOOR | SUITE 3304



SCHRAFFT'S

City Center

KIRK WELLER

Senior Vice President

+1 781 733 7814

kirk.weller@avisonyoung.com

CONNOR HAYES

Vice President

+1 617 993 0721

connor.hayes@avisonyoung.com

OLIVER FOX

Senior Associate

+1 413 325 6030

oliver.fox@avisonyoung.com

200 State Street | Floor 15 | Boston, MA 02109

© 2026. Avison Young. Information contained herein was obtained from sources deemed reliable and, while thought to be correct, have not been verified. Avison Young does not guarantee the accuracy or completeness of the information presented, nor assumes any responsibility or liability for any errors or omissions therein. Some imagery may have been edited using AI tools for visualization purposes.

**AVISON
YOUNG**