



## 156th & Hickman

156th & Hickman  
Clive, Iowa 50325

### Property Highlights

- Lot 1 - West Lot - ± 1.27 AC
- Lot 2 - SOLD
- Lot 3 - East Lot - ± 1.38 AC
- Zoning: C-4 - Planned Shopping Center Commercial District
- Traffic Counts: Hickman Road - 31,100 VPD (Iowa DOT 2022) | 156th Street - 10,765 VPD (Iowa DOT 2016)

### Property Overview

Seller financing available! 2 Pad sites for sale at the intersection of 156th and Hickman Road in Clive, IA. Adjacent to new Iowa Trust & Savings bank. Great visibility with high traffic. Proximate to Walgreen's, Arby's, Kum & Go, and Nebraska Furniture Mart.

### Offering Summary

Sale Price - Lot 1 (± 1.27 AC):	\$840,000 (\$15.18 PSF)
Sale Price - Lot 2 (± 1.3 AC):	SOLD
Sale Price - Lot 3 (± 1.38 AC):	\$989,000 (\$16.45 PSF)

### [View Property Video](#)

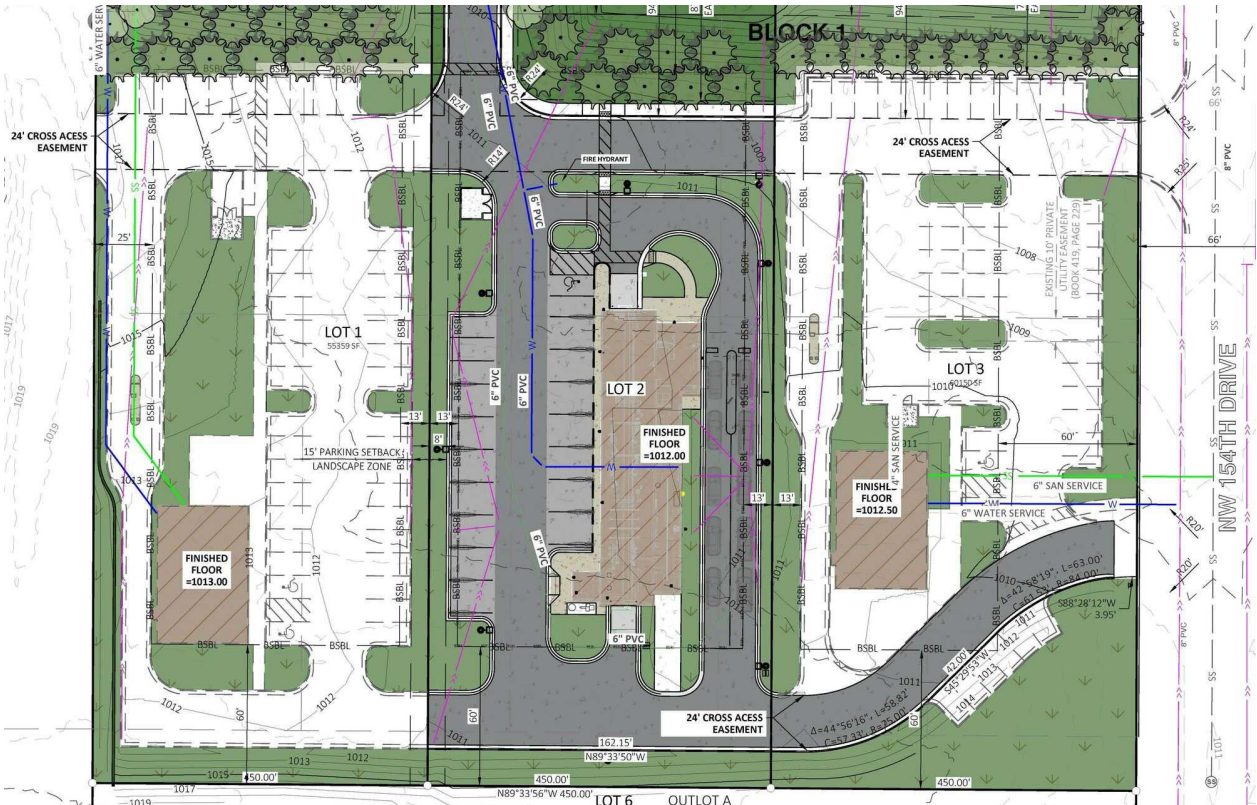
### For More Information

**Tom Hudson**

O: 515 453 5480  
tomhudson@iowarealtycommercial.com

**Jerry Marckres**

O: 515 453 5482  
jmarckres@iowarealtycommercial.com



We obtained the information above from sources we believe to be reliable. However, we have not verified its accuracy and make no guarantee, warranty or representation about it. It is submitted subject to the possibility of errors, omissions, change of price, rental or other conditions, prior sale, lease or financing, or withdrawal without notice. We include projections, opinions, assumptions or estimates for example only, and they may not represent current or future performance of the property. You and your tax and legal advisors should conduct your own investigation of the property and transaction.

3521 Beaver Avenue  
Des Moines, IA 50310  
515 222 0000 tel  
[iowacommercial.com](http://iowacommercial.com)

1 mile

3 miles

5 miles

### KEY FACTS

### KEY FACTS

### KEY FACTS

12,178

Population

36.8

Median Age

2.9

Average Household Size

\$128,676

Median Household Income

67,420

Population

35.0

Median Age

2.7

Average Household Size

\$110,481

Median Household Income

120,538

Population

36.3

Median Age

2.5

Average Household Size

\$101,923

Median Household Income

### EDUCATION

### EDUCATION

### EDUCATION

1%

No High School Diploma



10%

High School Graduate



18%

Some College



71%

Bachelor's/Grad/Prof Degree

1%

No High School Diploma



10%

High School Graduate



24%

Some College



64%

Bachelor's/Grad/Prof Degree

2%

No High School Diploma



13%

High School Graduate



24%

Some College



61%

Bachelor's/Grad/Prof Degree

### BUSINESS

### BUSINESS

### BUSINESS



180

Total Businesses



2,161

Total Employees



1,755

Total Businesses



35,703

Total Employees



5,470

Total Businesses



92,021

Total Employees

### EMPLOYMENT

### EMPLOYMENT

### EMPLOYMENT

88%

White Collar



6%

Blue Collar



5%

Services

1.7%

Unemployment Rate

83%

White Collar



10%

Blue Collar



7%

Services

1.5%

Unemployment Rate

82%

White Collar



11%

Blue Collar



7%

Services

1.8%

Unemployment Rate

### INCOME

### INCOME

### INCOME



\$128,676

Median Household Income



\$58,409

Per Capita Income



\$592,644

Median Net Worth



\$110,481

Median Household Income



\$53,283

Per Capita Income



\$323,879

Median Net Worth



\$101,923

Median Household Income



\$52,674

Per Capita Income



\$263,190

Median Net Worth

### Households By Income

The largest group: \$200,000+ (26.4%)  
The smallest group: <\$15,000 (1.1%)

Indicator ▲	Value	Diff	
<\$15,000	1.1%	-1.6%	█
\$15,000 - \$24,999	2.9%	-1.2%	█
\$25,000 - \$34,999	1.4%	-1.9%	█
\$35,000 - \$49,999	4.7%	-3.3%	█
\$50,000 - \$74,999	11.3%	-5.5%	█
\$75,000 - \$99,999	11.0%	-4.1%	█

### Households By Income

The largest group: \$100,000 - \$149,999 (25.1%)  
The smallest group: <\$15,000 (2.0%)

Indicator ▲	Value	Diff	
<\$15,000	2.0%	-0.7%	█
\$15,000 - \$24,999	3.4%	-0.7%	█
\$25,000 - \$34,999	2.7%	-0.6%	█
\$35,000 - \$49,999	5.8%	-2.2%	█
\$50,000 - \$74,999	14.1%	-2.7%	█
\$75,000 - \$99,999	14.5%	-0.6%	█

### Households By Income

The largest group: \$100,000 - \$149,999 (23.4%)  
The smallest group: <\$15,000 (2.4%)

Indicator ▲	Value	Diff	
<\$15,000	2.4%	-0.3%	█
\$15,000 - \$24,999	3.6%	-0.5%	█
\$25,000 - \$34,999	4.5%	+1.2%	█
\$35,000 - \$49,999	8.4%	+0.4%	█
\$50,000 - \$74,999	15.7%	-1.1%	█
\$75,000 - \$99,999	14.0%	-1.1%	█