



Marcus & Millichap

THE KRAMER GROUP

OFFERING MEMORANDUM

9595 W 49TH AVE

WHEAT RIDGE, CO 80033





9595 W 49TH AVE

WHEAT RIDGE, CO 80033

ERIK ENSTAD

Associate Director Investments
303.328.2013
Erik.Enstad@marcusmillichap.com
License: FA.100089977

BRANDON KRAMER

Managing Director Investments
303.328.2020
Brandon.Kramer@marcusmillichap.com
License: FA.100045203

CHADD NELSON

Director Investments
303.328.2056
Chadd.Nelson@marcusmillichap.com
License: FA100073491

NON-ENDORSEMENT NOTICE

Marcus & Millichap is not affiliated with, sponsored by, or endorsed by any commercial tenant or lessee identified in this marketing package. The presence of any corporation's logo or name is not intended to indicate or imply affiliation with, or sponsorship or endorsement by, said corporation of Marcus & Millichap, its affiliates or subsidiaries, or any agent, product, service, or commercial listing of Marcus & Millichap, and is solely included for the purpose of providing tenant lessee information about this listing to prospective customers.

This information has been secured from sources we believe to be reliable, but we make no representations or warranties, express or implied, as to the accuracy of the information. References to square footage or age are approximate. Buyer must verify the information and bears all risk for any inaccuracies.

MNET ACTIVITY ID: ZAG0050524

Marcus & Millichap is a service mark of Marcus & Millichap Real Estate Investment Services, Inc.

© 2025 Marcus & Millichap. All rights reserved

Marcus & Millichap
THE KRAMER GROUP

SECTION

1

EXECUTIVE SUMMARY

Marcus & Millichap
THE KRAMER GROUP



9595 W 49TH AVE

WHEAT RIDGE, CO 80033

\$949,000
LISTING PRICE

ADDRESS: 9595 W 49TH AVE, WHEAT RIDGE, CO 80033

LOT SIZE: 0.3 ACRES

YEAR BUILT: 1948

RENOVATED: 2010

BUILDING SIZE: APPROX. 3,851/SF

CONFIGURATION: FOURTEEN PRIVATE OFFICE SUITES WITH AN OPEN-CONCEPT LAYOUT

PARKING: PRIVATE OFF-STREET SURFACE PARKING WITH 12 SPACES





THE OFFERING

The Kramer Group of Marcus & Millichap is pleased to present the exclusive opportunity to acquire 9595 W 49th Ave, a versatile, single-story, 3,851-square-foot multi-suite office property located in the highly desirable Wheat Ridge submarket of Denver. The property offers fourteen private office suites along with private parking, positioned on a prominent corner lot with excellent visibility and accessibility. This asset represents an outstanding owner-user or value-add investment opportunity, offering stable functionality today with meaningful long-term upside potential as Wheat Ridge and the greater Denver Metro continue to experience strong population and employment growth.

Marcus & Millichap
THE KRAMER GROUP

INVESTMENT HIGHLIGHTS



Building Size / Layout:

3,851-Square-Foot, Multi-Suite Office with Fourteen Private Office Suites and an Open-Concept Layout



Condition: New Roof Installed in 2017; Well-Maintained with Potential for Modernization and Upgrades



Lot Size: Prominent Corner Lot Providing Visibility and Accessibility



Investment Profile: Strong Opportunity for Both Owner-Users and Investors Seeking Value-Add Potential



Parking: Ample On-Site, Off-Street Surface Parking with 12 Spaces

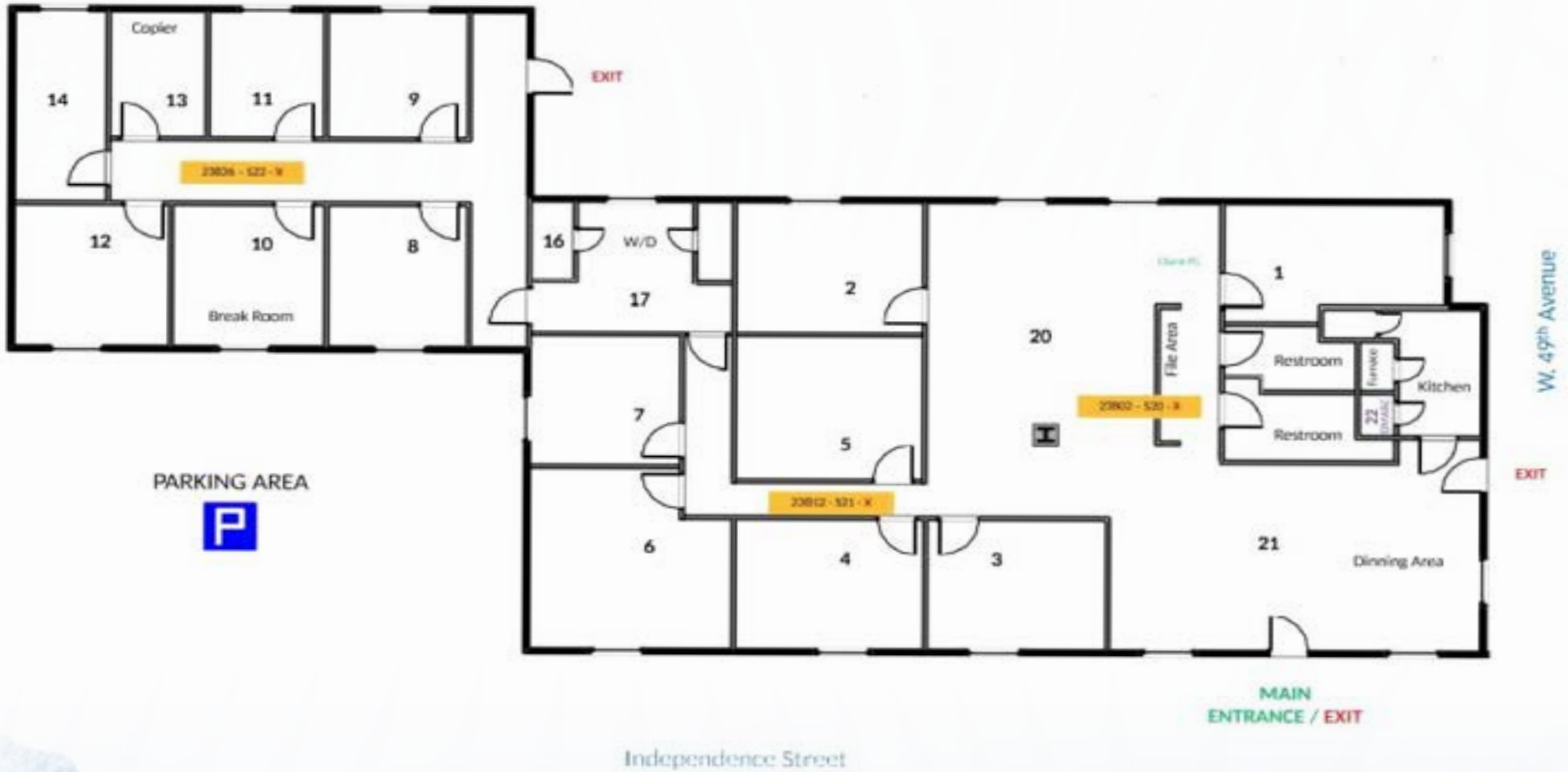


Positioning: Below Replacement Cost in a Supply-Constrained Submarket



Flexibility: Ideal for Medical, Professional Office, or Owner-User Occupancy

FLOOR PLAN



EXTERIOR PHOTOS



INTERIOR PHOTOS



SECTION

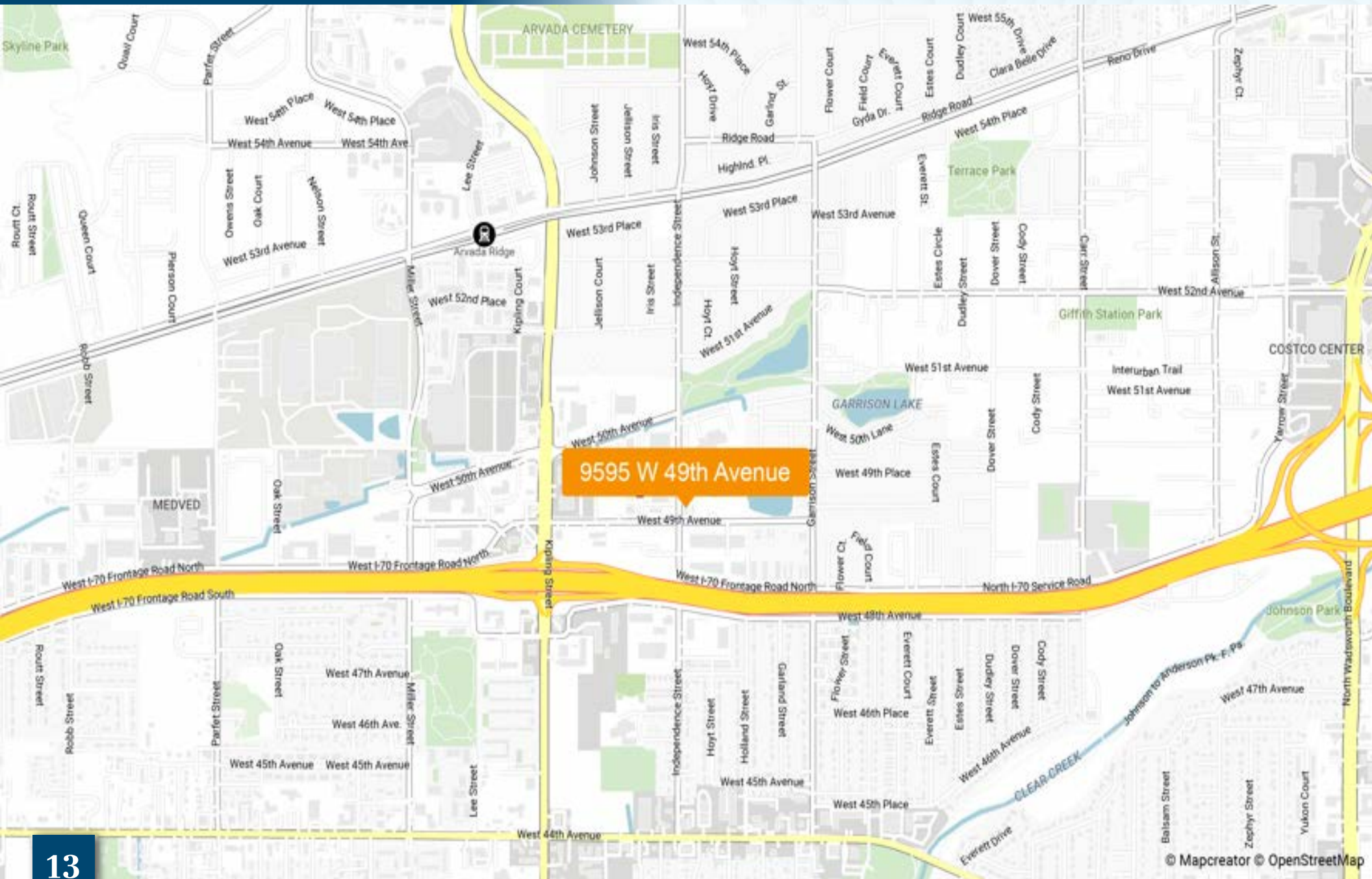
2

STRATEGIC LOCATION

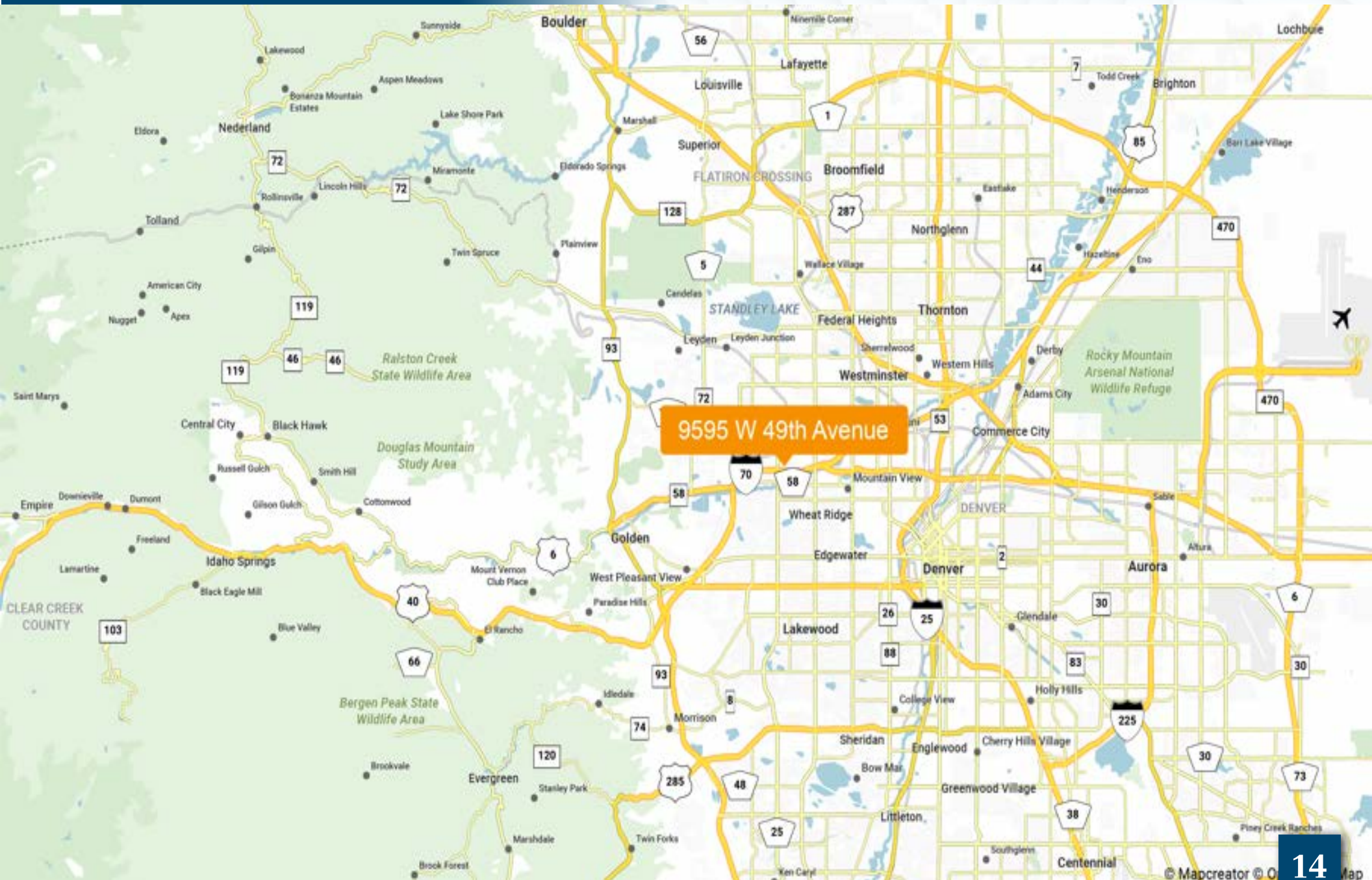
Marcus & Millichap
THE KRAMER GROUP



LOCAL MAP



REGIONAL MAP



RETAILER MAP





MARKET OVERVIEW

WHEAT RIDGE, CO

The property is in Wheat Ridge, Colorado, an attractive target for industrial and warehouse investment thanks to the city's strategic location and infrastructure. Positioned near Interstate 70, the property benefits from convenient access to the entire Denver–Aurora–Lakewood metropolitan area. Additionally, the area's desirable suburban neighborhoods are home to a strong talent pool featuring a growing population of highly educated residents. Approximately 301,194 residents live within a five-mile radius of the property. Among those residents, at least 40 percent have achieved a bachelor's degree or higher. The city's economy is further stabilized by the presence of major employers in healthcare and manufacturing. Intermountain Health Lutheran Hospital, the city's largest health provider, supports employment for over 2,000 residents. Iconic soft drink bottler Pepsi Beverages likewise employs 2,000 residents. Another positive trend for industrial investment is the city's ongoing economic development plan. City officials are expected to accelerate the development of new light manufacturing and flex industrial spaces over the next decade.

HIGHLIGHTS:

- Prime Location Thanks to Direct Access to Interstate 70 and Downtown Denver
- Talent Pool with 40 Percent of Residents Holding a Bachelor's Degree or Higher
- Major Employers Like Intermountain Health and Pepsi Bolster Economic Stability
- City-Supported Growth in Light Manufacturing and Flex Industrial Development

WHEAT RIDGE, CO

DEMOGRAPHICS

13,332

2024 POPULATION
WITHIN 1 MILE

102,350

2024 POPULATION
WITHIN 3 MILES

301,194

2024 POPULATION
WITHIN 5 MILES

37

MEDIAN AGE
WITHIN 1 MILE

\$91,816

AVERAGE HOUSEHOLD
INCOME WITHIN 1 MILE

\$114,354

AVERAGE HOUSEHOLD
INCOME WITHIN 3 MILES

6,685

2024 TOTAL HOUSEHOLDS
WITHIN 1 MILE

46,825

2024 TOTAL HOUSEHOLDS
WITHIN 3 MILES

2.0

AVERAGE HOUSEHOLD
SIZE WITHIN 1 MILE

9595 W 49TH AVE

WHEAT RIDGE, CO 80033

OFFERING MEMORANDUM

ERIK ENSTAD

Associate Director Investments
303.328.2013
Erik.Enstad@marcusmillichap.com
License: FA.100089977

BRANDON KRAMER

Managing Director Investments
303.328.2020
Brandon.Kramer@marcusmillichap.com
License: FA.100045203

CHADD NELSON

Director Investments
303.328.2056
Chadd.Nelson@marcusmillichap.com
License: FA100073491

