



FOR **SUBLEASE**

65 HANOVER STREET
PORTLAND, ME 04101

- 1,800± SF of retail space available
- Excellent Portland location adjacent to The Armature, a 171-unit apartment building
- Join Bayside Bowl, Batson River, Wilson County BBQ, and more
- Sublease expiration: 10/16/2028
- Sublease Rate: \$25.00/SF NNN

RETAIL SPACE

PROPERTY HIGHLIGHTS

SUBLANDLORD When Pigs Fly Co.

ASSESSOR'S REFERENCE 33 / C / 15

BOOK AND PAGE 40594 / 309

BUILDING SIZE 7,361± SF

AVAILABLE SPACE 1,800± SF

DATE AVAILABLE Immediately

HVAC LNG Heat, Electric A/C

PARKING Available on-site

SPRINKLER Yes

SIGNAGE On-building signage available

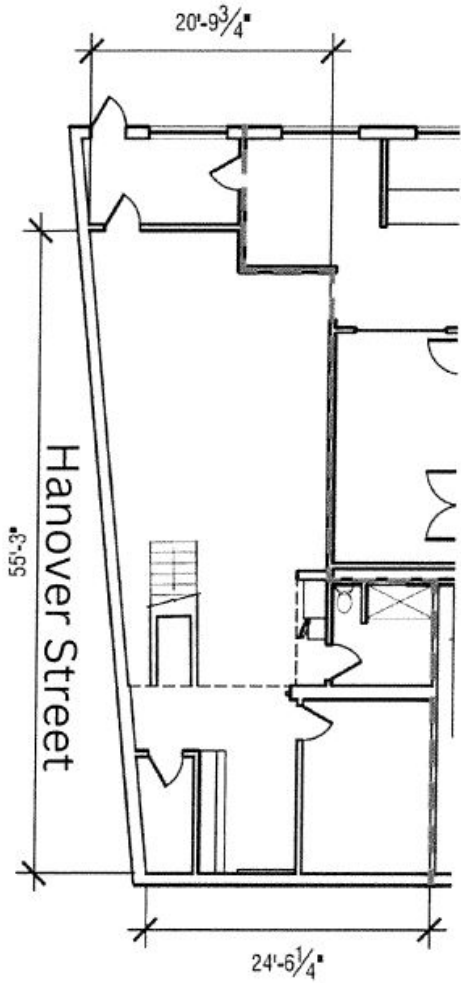
ZONING B-2b

SUBLEASE EXPIRATION 10/16/2028

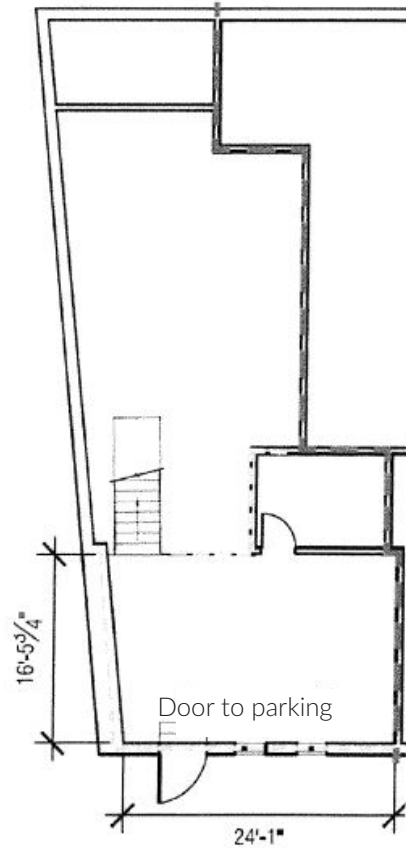
SUBLEASE RATE \$25.00/SF NNN

EST. NNN EXPENSES \$9.30/SF (est. 2026)

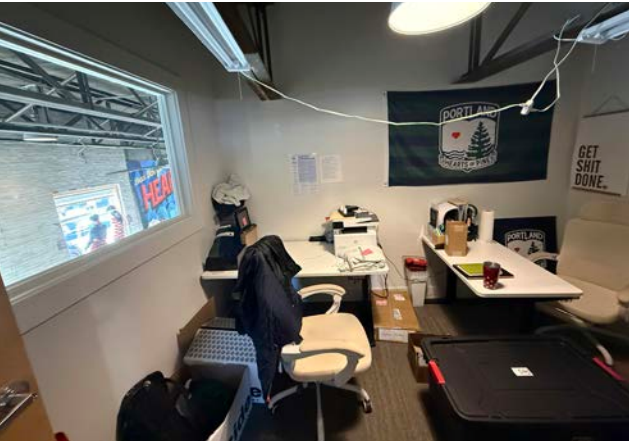
FLOOR PLAN



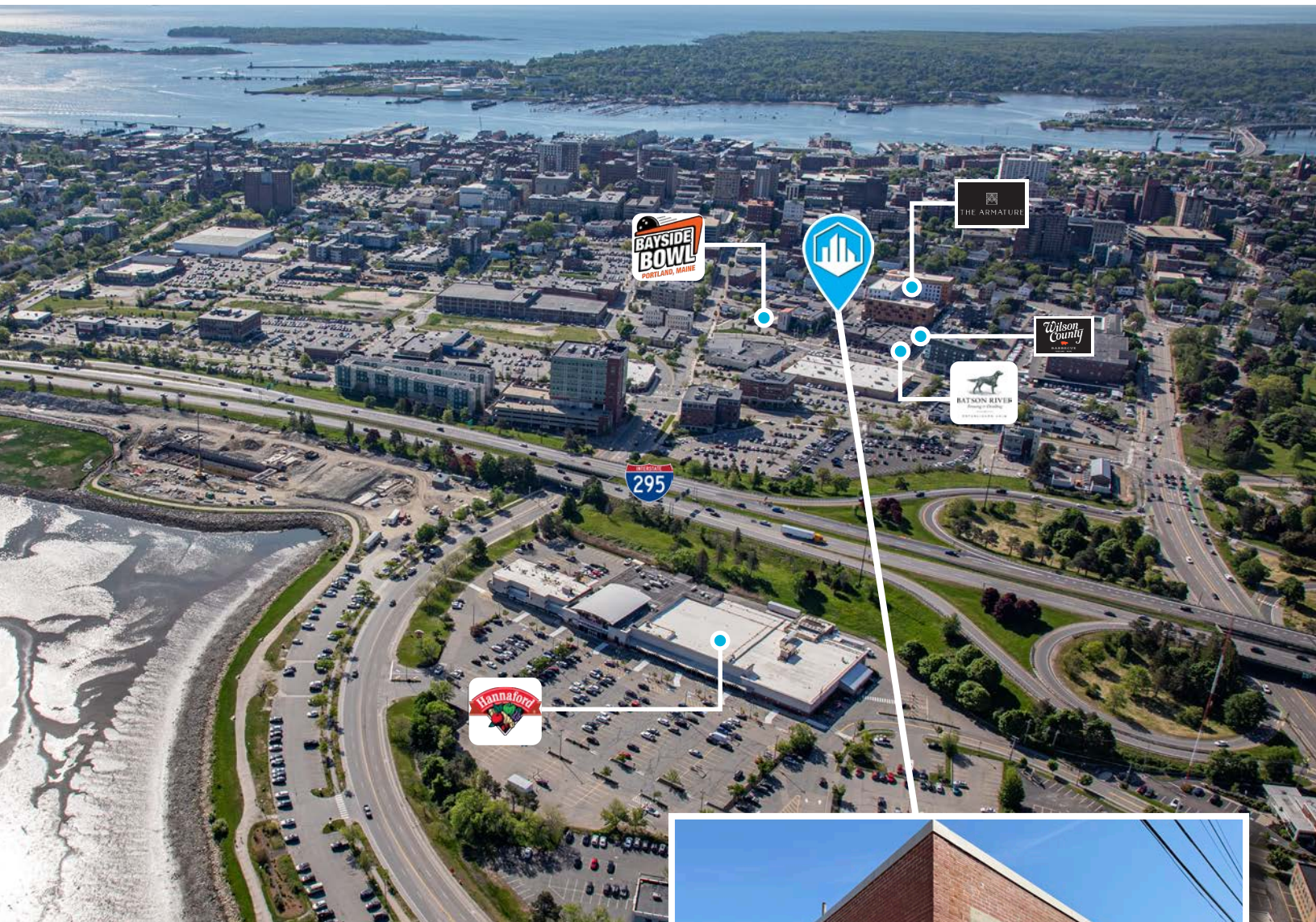
FIRST FLOOR



MEZZANINE



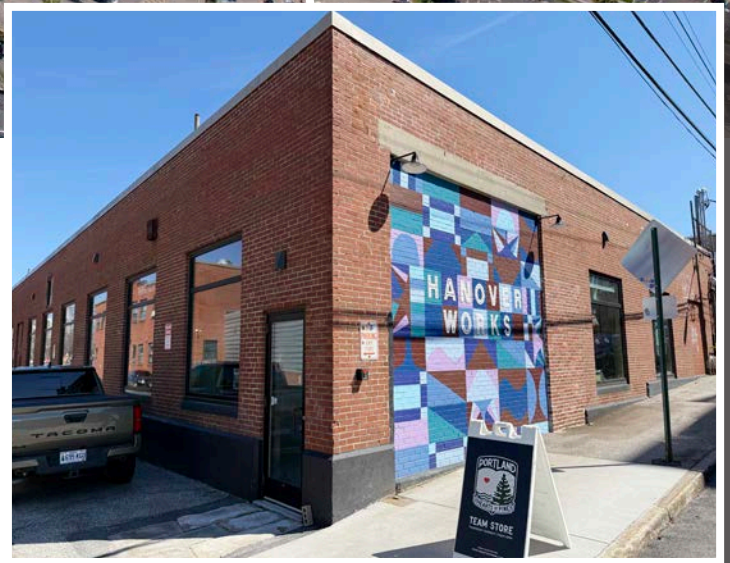
FOR SUBLEASE 65 HANOVER STREET
PORTLAND, ME 04101



CONTACT US



REESE MCFARLANE
Associate Broker
207.553.1734 D
207.712.6987 C
rmcfarlane@boulos.com



©2026 The Boulos Company, Inc. All rights reserved. This information has been obtained from sources believed reliable but has not been verified for accuracy or completeness. You should conduct a careful, independent investigation of the property and verify all information. Any reliance on this information is solely at your own risk. The Boulos Company and The Boulos Company logo are service marks of The Boulos Company, Inc. All other marks displayed on this document are the property of their respective owners. Photos herein are the property of their respective owners. Use of these images without the express written consent of the owner is prohibited.