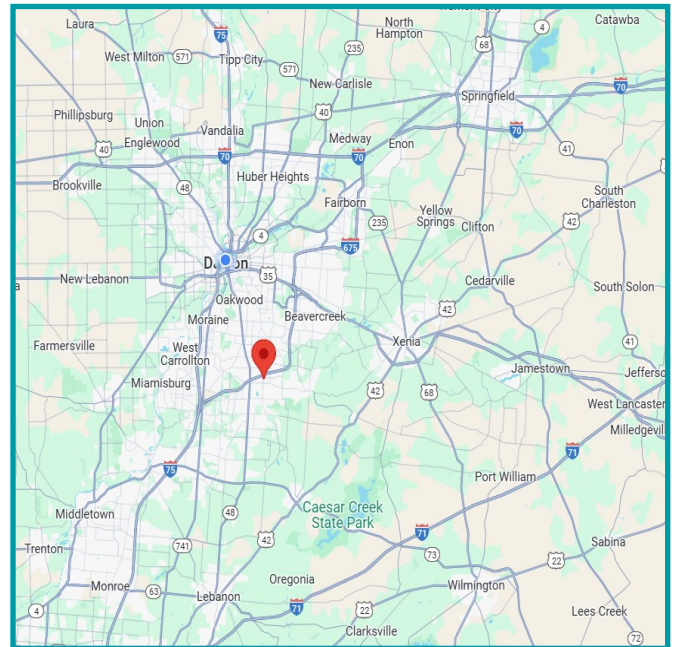




## PROPERTY HIGHLIGHTS

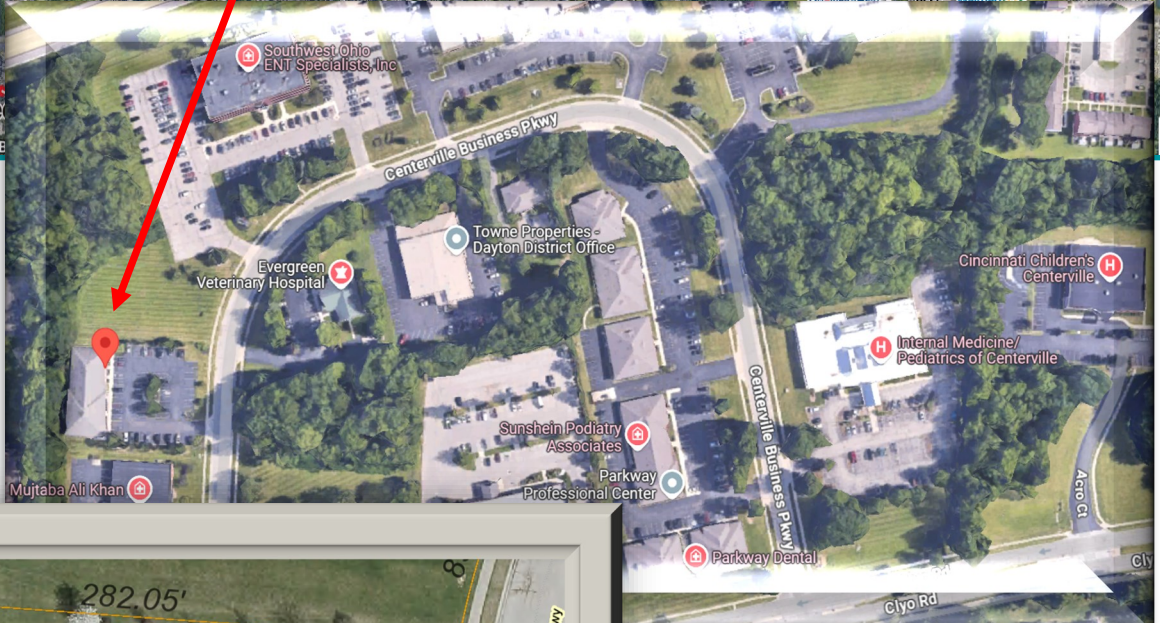
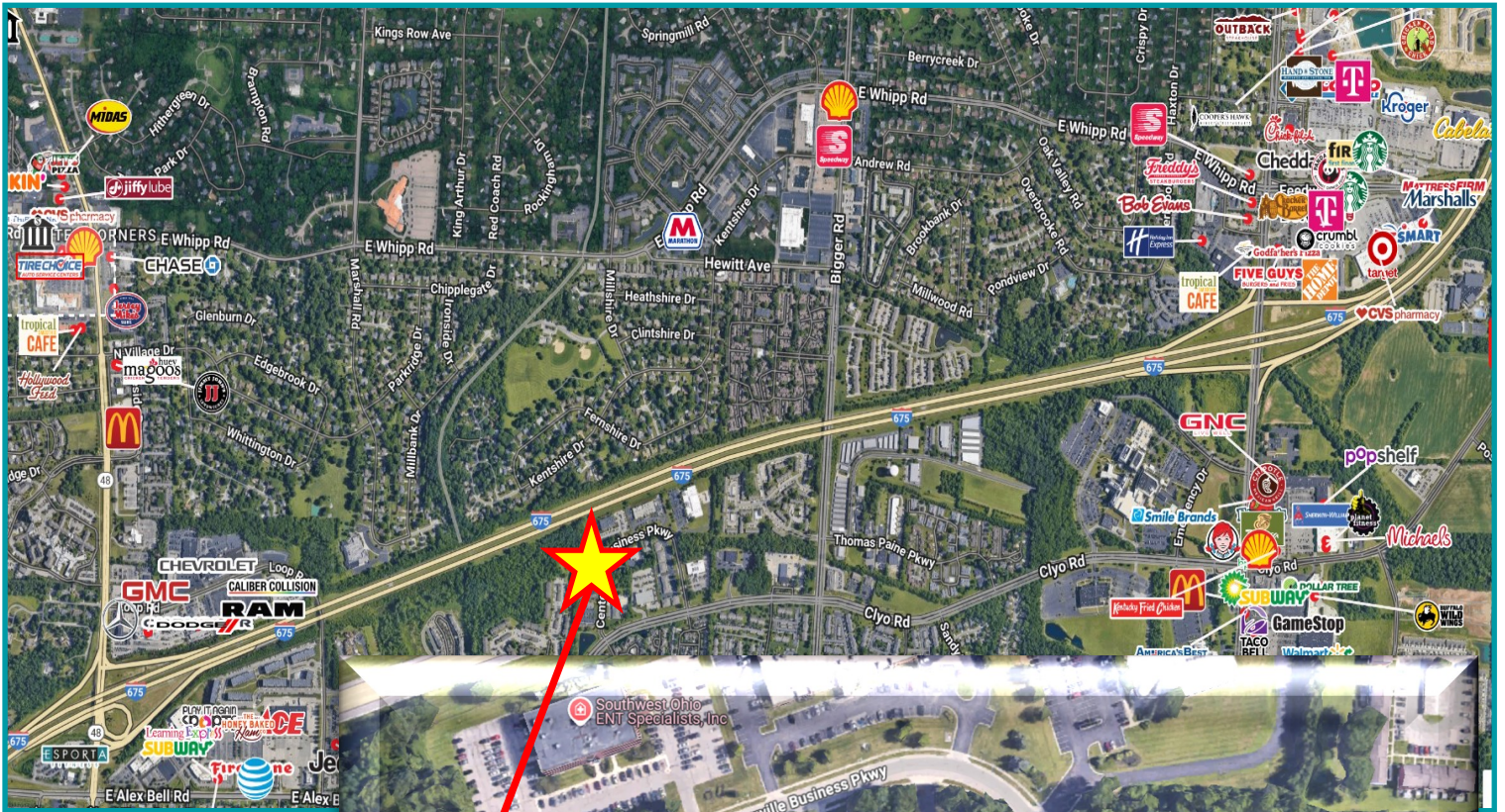
- Prime Medical Space For Lease
- 8,200 SF Freestanding Building
- 6627 - 3162 Sq. Ft. - 6 exam rooms
- 6625 - 1224 Sq. Ft. - office space
- 6623 - 2102 Sq. Ft. - 6 exam rooms
- 6621 - 1712 Sq. Ft. - 4 exam rooms
- Located along busy I-675 corridor in Centerville Business Parkway a convenient, park-like campus with on-site ample parking
- Over 62,110 cars per day on I-675 and 16,222 cars per day on Clio Road
- For Lease - \$19.00 NNN



**For More Information, Please Contact:**

**Kelly Gray | Vice President, CCIM**  
Mobile: 937.470.3002  
kgray@equity.net

**Tracey Herron | Sr. V.P. of Sales & Leasing**  
Mobile: 937.216.4636  
therron@equity.net





DEMOGRAPHICS	1 Mile	3 Miles	5 Miles
<b>Population</b>	10,270	68,034	165,808
<b>Average HH Income</b>	\$109,486	\$135,248	\$138,526
<b>Daytime Population</b>	4,023	38,133	87,436