

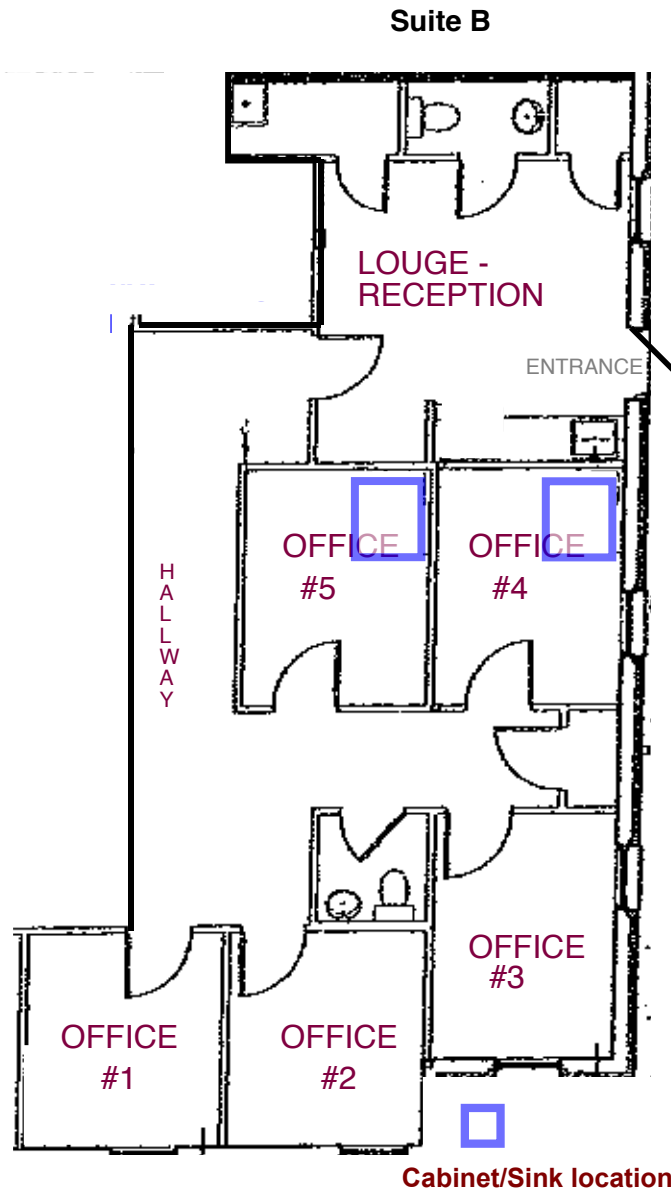
# 889 RIO E COURT

\$24.00 SF



- \* 1,535 SF
- \* Ample
- \* Parking
- \* Signage
- \* 5 offices
- \* 2 bathrooms
- \* Reception

INCLUDED IN RENT



889 B E RIO COURT

Located in the rear side of the b

**Real Estate III**  
Commercial Properties

ROBIN AMATO  
ASSOCIATE BROKER | CCIM  
434-981-0767  
9810767@RE3CP.COM