

The logo for NA Commercial, featuring a stylized 'NA' in red and black followed by the word 'Commercial' in a bold, black, sans-serif font.

**NA Commercial**

**FOR LEASE**  
Office Space at the  
World Trade Centre



**John Freyvogel**

Personal Real Estate Corporation  
Vice President, Leasing & Sales  
604 691 6640  
jfreyvogel@naicommmercial.ca

**Chris Oteman**

Commercial Leasing & Sales  
604 828 0535  
coteman@naicommmercial.ca

**999 Canada Place**  
Vancouver, BC

1075 W Georgia St, Suite 1300, Vancouver, BC V6E 3C9 | +1 604 683 7535 | [naicommmercial.ca](http://naicommmercial.ca)

## Property Details

### Operating Costs & Property Taxes (2026 Est.)

\$24.46/SF  
\$25.30/SF \*suites with balconies

### Lease Rate

Contact listing agent

### Parking

Ample paid parking for tenants and visitors

### Building Features/Amenities

- ▶ Located in Canada Place which also house the Cruise Ship Terminal, the Vancouver Trade and Convention Centre and the Pan Pacific Hotel
- ▶ Exceptional views of Stanley Park, the Burrard Inlet and the North Shore Mountains
- ▶ Easy access to all forms of rapid transit with covered, underground access to SkyTrain and the West Coast Express
- ▶ Superb amenities and access to Seawall, health and fitness facilities
- ▶ Close to major shopping malls and an array of dining and entertainment options

# World Trade Centre | 999 Canada Place, Vancouver, BC

## Highlights

On the Waterfront with breath-taking ocean views and the North Shore Mountains spanning from the Lions Gate Bridge to the Second Narrows Bridge and easily accessible by public transit like the Seabus, SkyTrain, Canada Line, Westcoast Express and within walking distance to the Heliport and the Seaplane Terminals.

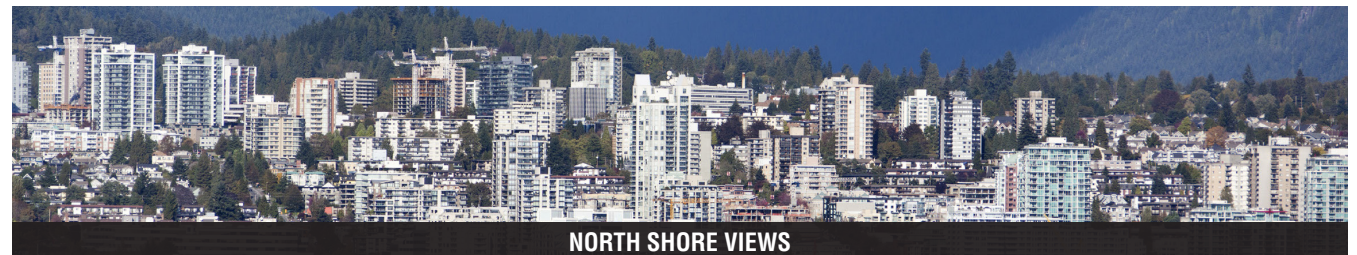
## Location

The World Trade Centre Office Complex is located on the waterfront of downtown Vancouver at Canada Place. It is connected to the Vancouver Trade and Convention Centre (both east and west wing). The building is adjacent to major downtown office towers, hotels, the Seawall, fitness centres, and other amenities.

## Available Units

Unit	Availability	Size
520 East facing. Open plan with large window office and storage.	Immediate	1,084 SF
590* South facing with access to deck city views. Open plan with 1 window office, meeting rooms and kitchen.	Immediate	3,306 SF
605/606* North & east views with access to balcony, up to 9 window offices, 3 internal offices, 2 meeting rooms, kitchen and server room.	Immediate	7,032 SF
615 Atrium facing, 6 offices, meeting room, kitchen and open area.	Immediate	3,609 SF
619 Atrium facing, 5 offices, kitchen and open area.	Immediate	2,815 SF

*Suites 615 and 619 can be combined for 6,424 SF*

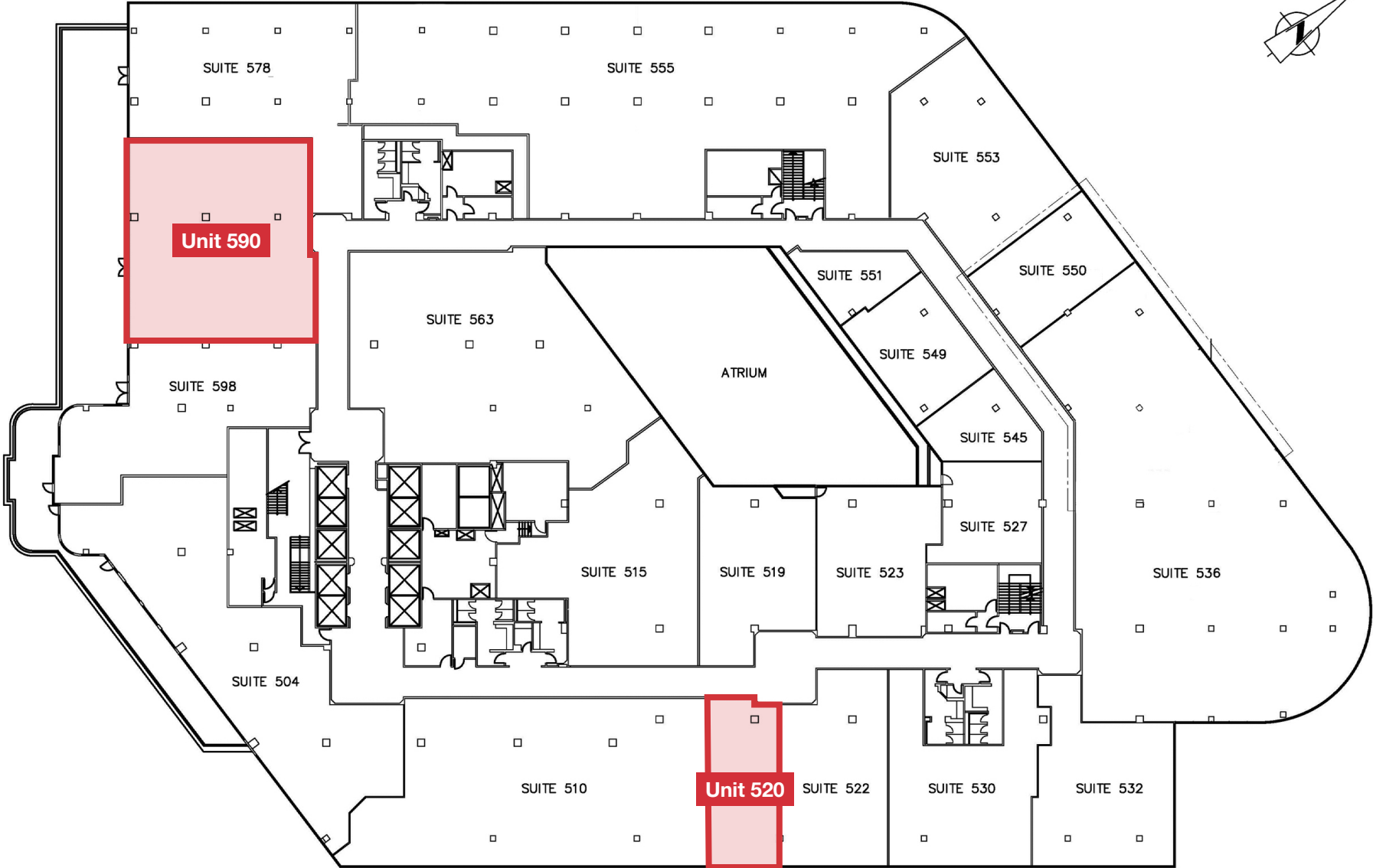


# World Trade Centre

999 Canada Place, Vancouver, BC



## 5<sup>th</sup> Floor Plan

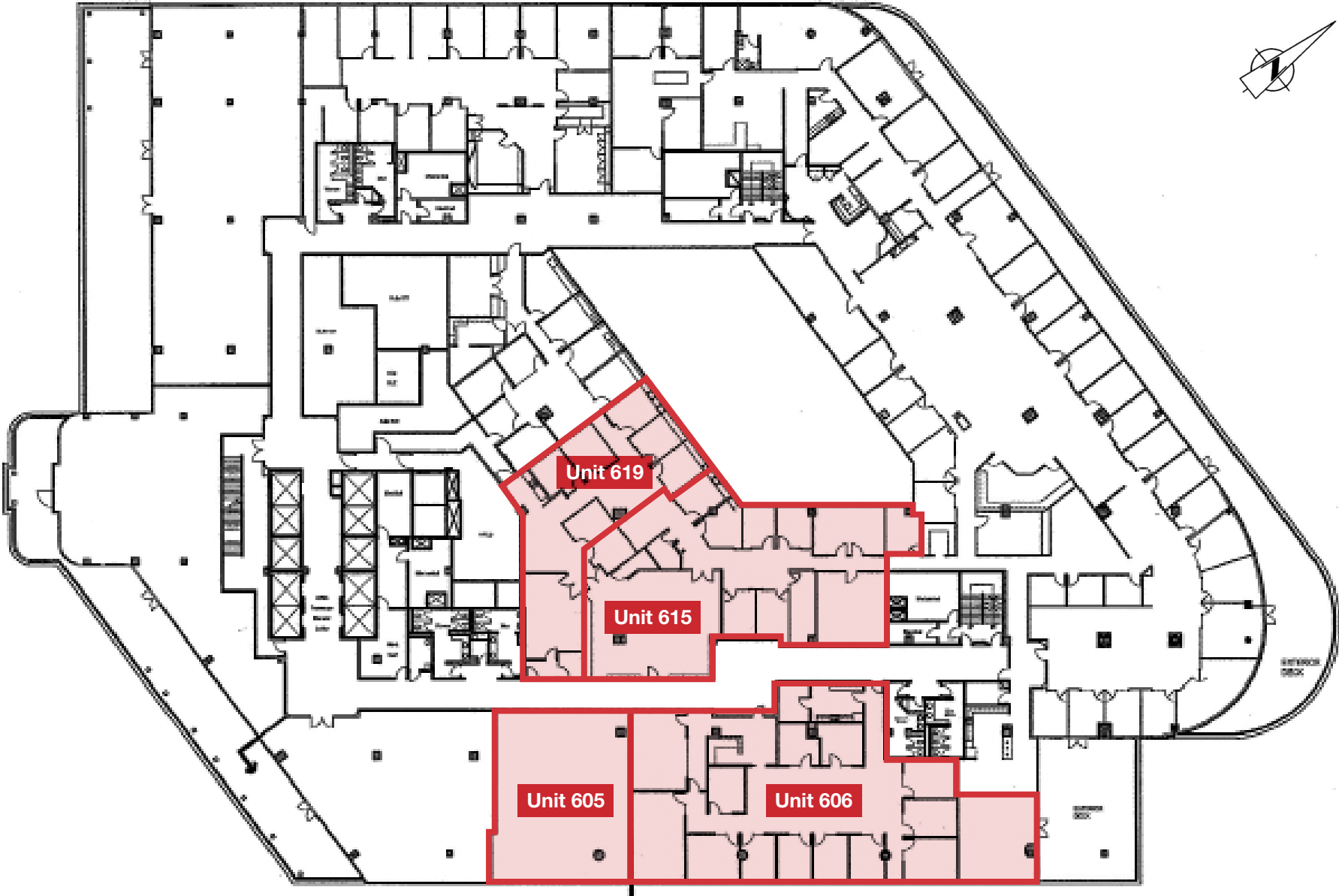


# World Trade Centre

999 Canada Place, Vancouver, BC



## 6<sup>th</sup> Floor Plan





- 1. Fairmont Pacific Rim and Botanist
- 2. LOT185 Café + Wine Bar
- 3. Bella Gelateria
- 4. Nightingale
- 5. Brass Fish Tavern
- 6. ARC

- 7. Lions Pub and Freshii
- 8. Miku Vancouver
- 9. Mink Chocolates Cafe
- 10. The Vancouver Club
- 11. JOEY Bentall One
- 12. Cactus Club Bentall 5

- 13. CIBC
- 14. Scotiabank
- 15. BC Liquor Stores
- 16. A&W and Chronic Tacos
- 17. Rogue Kitchen & Wetbar
- 18. Steamworks Brewpub

**John Freyvogel**

Personal Real Estate Corporation  
 Vice President, Leasing & Sales  
 604 691 6640  
 jfreyvogel@naicommercial.ca

**Chris Oteman**

Commercial Leasing & Sales  
 604 828 0535  
 coteman@naicommercial.ca



1075 W Georgia St, Suite 1300, Vancouver, BC V6E 3C9 | +1 604 683 7535 | [naicommercial.ca](http://naicommercial.ca)

© 2024 NAI Commercial (BC) Ltd. All Rights Reserved.  
 No warranty or representation, express or implied, is made as to the accuracy of the information contained herein, and the same is submitted subject to errors, omissions, change of price, rental or other conditions, prior sale, lease or financing, or withdrawal without notice, and of any special listing conditions imposed by our principals no warranties or representations are made as to the condition of the property or any hazards contained therein are