

For LEASE \$16psf NNN

Retail space between Lakeview and Roscoe Village

## Lincoln Lofts Retail

### Property Specifications:

- 2,200 – 20,285 Sq. Ft Available
- Total Rentable Area: 20,285 Sq. Ft
- Parcel Number: 14-29-100-039
- Zoning: B1-3

CTA Train Stations: Paulina Brown Line (.4 miles)

CTA Train Stations: Southport Station (.6 miles)

Bus Routes to Property: #9 & #77

Parking: Public lot adjacent to property at 3132 N Greenview

Sprinkling System: 100%

### Availability:

3155-3157 N Lincoln: 7,187 sf

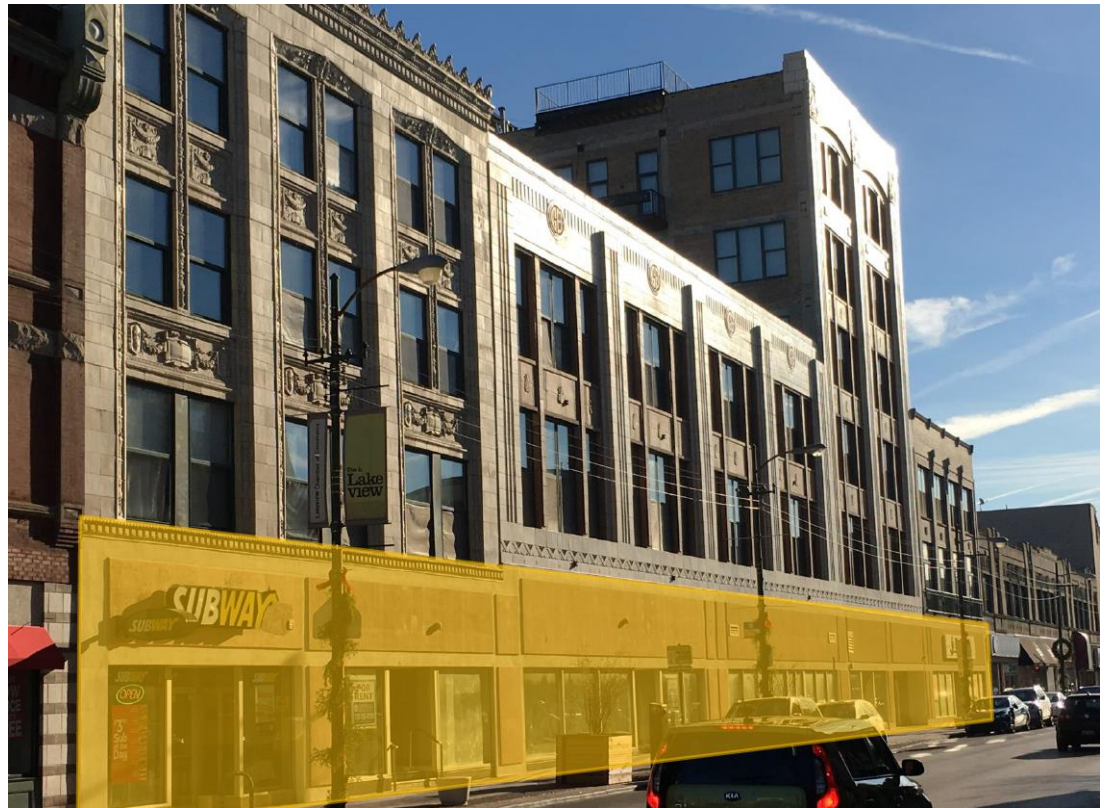
3161 N Lincoln: 10,898 sf

3167 N Lincoln: 2,200 sf

Space can be combined to: 20,285 sf

# 3155-3167 N. Lincoln Ave

Near the Corner of Lincoln, Belmont, and Ashland



4747 W. Peterson Ave.,  
Chicago, IL 60646  
P: 773-736-4100  
E: [info@imperialrealtyco.com](mailto:info@imperialrealtyco.com)  
[www.imperialrealtyco.com](http://www.imperialrealtyco.com)

## 3155-3167 N. Lincoln Ave, Chicago, IL 60657

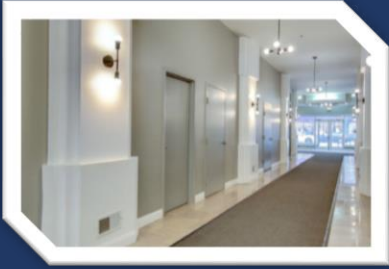
**Features Include:** Imperial Realty Company is pleased to offer the opportunity to lease the first-floor retail at 3155-3167 N Lincoln Avenue of The Lincoln Lofts. The opportunity is located in the highly desired neighborhood of Lakeview, which is bordered by Lake Michigan on the east, Uptown to the north, Roscoe Village to the west, and Lincoln Park to the south, serving nearly 100,000 residents, making it the second largest of the Chicago community areas by population and the largest by density. The offering features retail storefront space along both Belmont Ave. and Lincoln Ave and is just off the 6-way stop of Lincoln Ave., Belmont Ave., and Ashland Ave and is directly across from the Whole Foods at 3201 N Ashland.

Please call to arrange a private viewing: 773-736-4100 [info@imperialrealtyco.com](mailto:info@imperialrealtyco.com)

The information herein has been gathered from sources deemed reliable. We have no reason to doubt its accuracy but we do not guarantee it.

# Lincoln Lofts Retail

For LEASE \$16psf NNN  
Highly Accessible Downtown Location



3155-3167 N. Lincoln Ave, Chicago, IL 60657

Additional Information: The building was originally constructed in 1929 as Goldblatt's Brothers Department Store. It was redeveloped in 1996 into condominiums by Imperial Realty. The building is a combination of a 3-story and 6-story structure with below-grade parking for the residential condominiums. With 121'+/- along Belmont Avenue and 244'+/- along Lincoln Avenue, the property is a staple of the Lakeview community.

4747 W. Peterson Ave.,  
Chicago, IL 60646  
P: 773-736-4100  
E: [info@imperialrealtyco.com](mailto:info@imperialrealtyco.com)  
[www.imperialrealtyco.com](http://www.imperialrealtyco.com)

Please call to arrange a private viewing: 773-736-4100 [info@imperialrealtyco.com](mailto:info@imperialrealtyco.com)

The information herein has been gathered from sources deemed reliable. We have no reason to doubt its accuracy but we do not guarantee it.