

±27,139 SF  
Advanced Technology

±76,783 SF  
Fitted Labs

# ICONA

## MISSION BAY



KKR



LONGFELLOW



CUSHMAN &  
WAKEFIELD

# Availability

Sector D

Sector C

Sector B



Sector A

10 | ±27,139 RSF Office

7 | ±26,521 RSF Fitted Lab

5 | ±22,745 SF Move-In Ready Fitted+ Lab

4 | ±27,517 SF Move-In Ready Fitted Lab

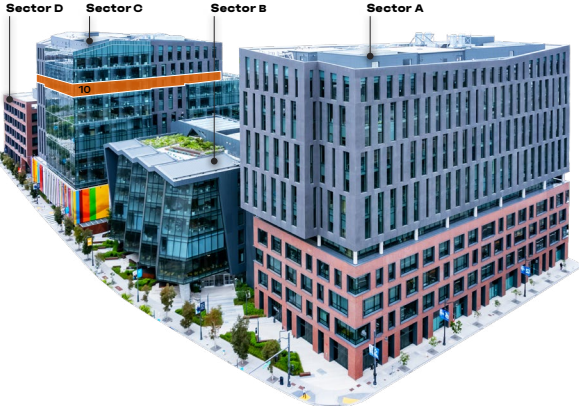
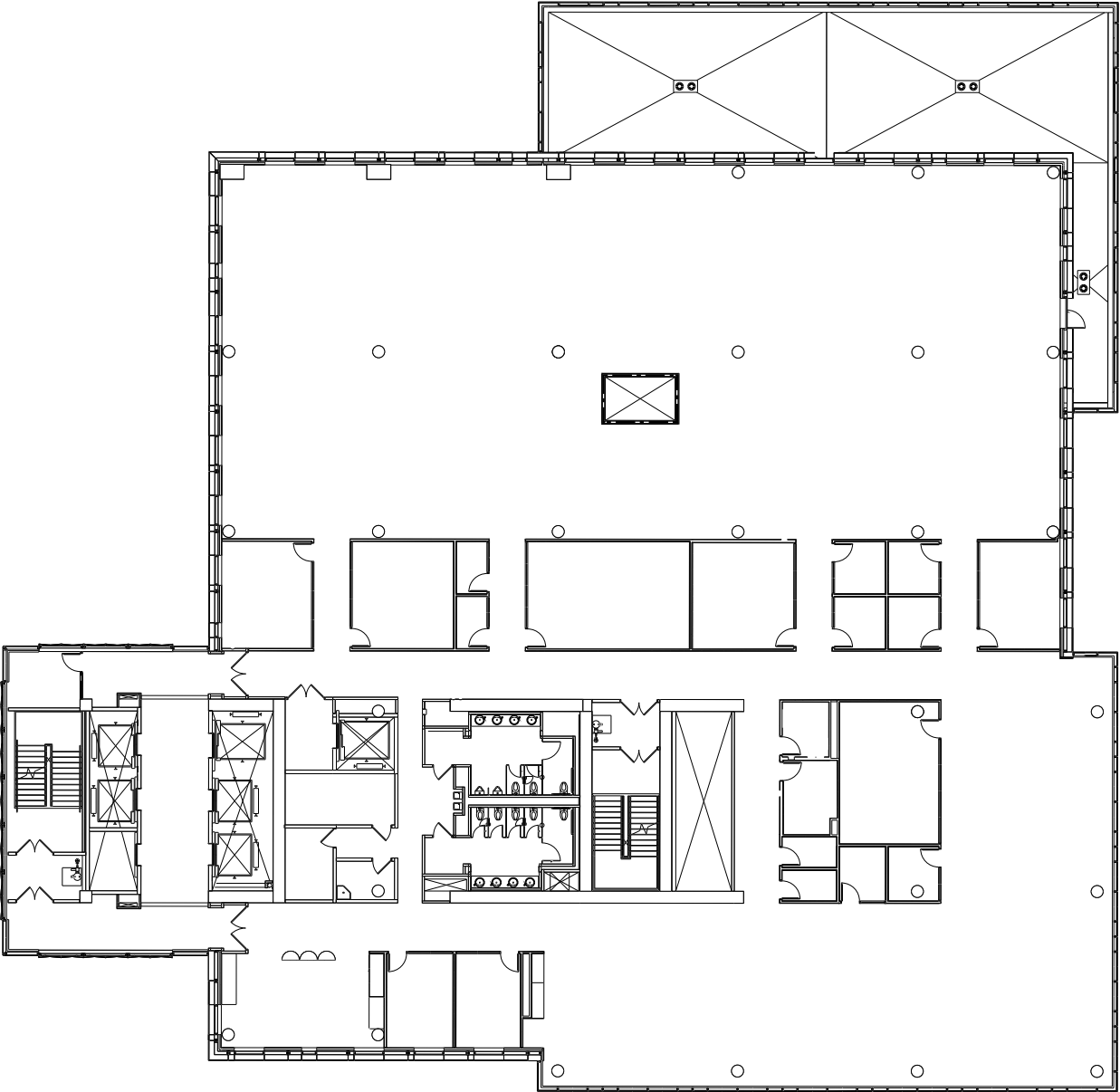
 ±76,783 SF Fitted Lab Suites Available  
 ±27,139 SF Build to Suit Space Available

±103,922 SF Total Available

# Sector C

Floor 10 Hypothetical Office Plan - Ready for TIs

±27,139 SF



# Existing Office Conditions | C10



## The onsite experience



### Onsite brewery

Ballast Point brewpub



### Public art

A creative environment



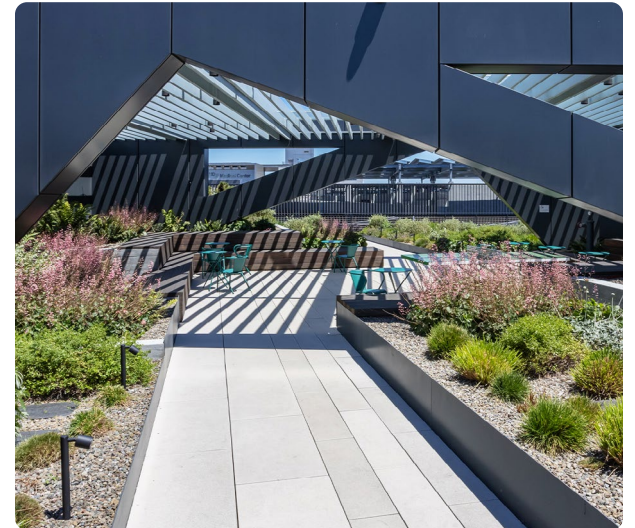
### Iconic views

San Francisco skyline



### Bike parking

Plentiful and secure



### Rooftop garden

Fresh air and panoramic vistas

# ICONA

LABS AT MISSION BAY



**Ben Paul**  
Vice Chairman  
+1 650.867.9639  
ben.paul@cushwake.com  
Lic #01210872

**Marc Pope**  
Vice Chairman  
+1 650.619.2981  
marc.pope@cushwake.com  
Lic #01474483

**JD Lumpkin**  
Executive Managing Director  
+1 415.377.4687  
jd.lumpkin@cushwake.com  
Lic #01215057

**Chris Baker**  
Managing Director  
+1 650.315.9858  
chris.r.baker@cushwake.com  
Lic #02116566

KKR



LONGFELLOW



CUSHMAN &  
WAKEFIELD