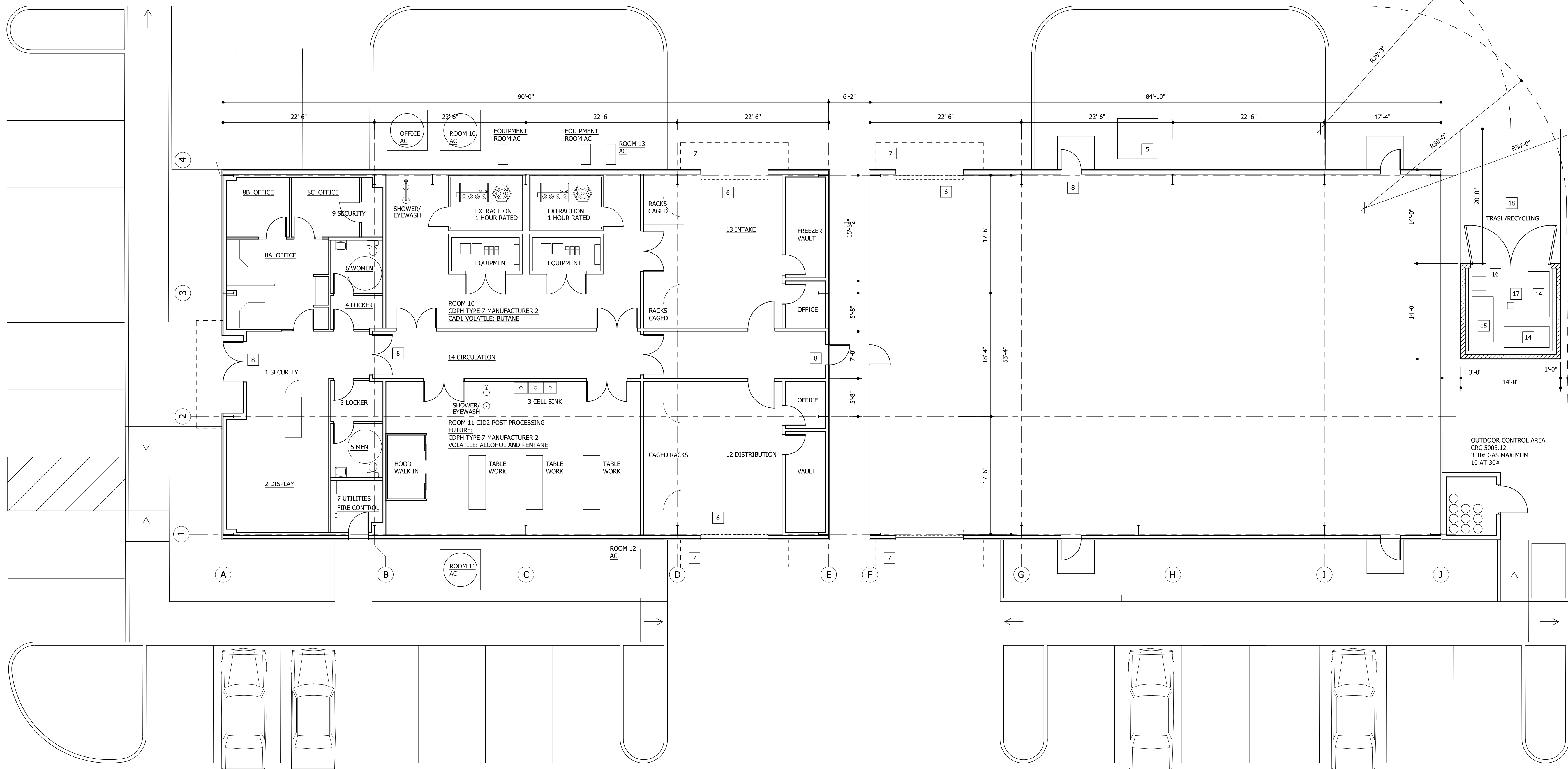


architect
copyright whitelam+whitelam
whitelam+whitelam retain
all rights to this design.
plans may not be copied,
assigned to a third party,
or used for other sites.



FIRE LANE

OUTDOOR CONTROL AREA
CRC 5003.12
300# GAS MAXIMUM
10 AT 30#

EQUIPMENT LIST

OCCUPANT LOADS FOR SOUTH FACILITY

ROOM	NAME	OCC	AREA	FACTOR	LOAD	REMARKS
1	SECURITY	B	129	5	25	--
2	DISPLAY	B	261	60	5	--
3,4	LOCKER	B	47	50	2	--
5/6	MEN/WOMEN	B	--	--	--	--
7	UTILITIES	B	--	--	--	--
8A	OFFICE	B	203	150	2	--
8B	OFFICE	B	81	150	1	--
8C	OFFICE	B	90	150	1	--
9	SECURITY	B	--	--	--	--
10	CID1	F	856	100	9	--
11	CID2	F	862	100	9	--
12	DISTRIBUTION	S1	613	200	3	--
13	INTAKE	S1	692	200	4	--
14	CIRCULATION	B	--	--	--	--
					61	TOTAL

OCCUPANT LOADS FOR NORTH FACILITY
4666 SF / 200 - 23 OCCUPANTS

OCCUPANT LOADS GAS STORAGE

NO OCCUPANTS

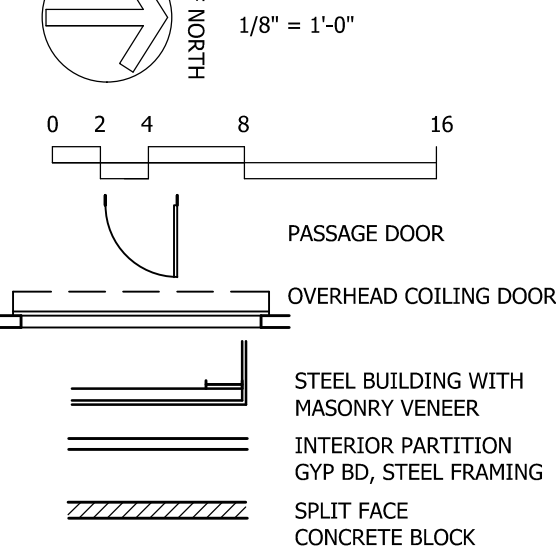
OCCUPANT LOADS TRASH ENCLOSURE

NO OCCUPANTS

KEY NOTES

- 1 EXTRACTION BOOTH
- 2 EXTRACTION HEATERS AND CHILLERS
- 3 HVAC, EXTRACTION, OTHER OUTDOOR UNITS
- 4 HVAC FOR OFFICE AREA
- 5 EVAPORATIVE COOLING TOWER
- 6 OVERHEAD COILING DOOR
- 7 CANOPY ABOVE
- 8 EXIT
- 9 3 COMPARTMENT SINK
- 10 EMERGENCY SHOWER
- 11 EYEWASH
- 12 END OF FUTURE BUILDING
- 13 10 BUTANE TANKS AT 100# EACH
- 14 GARBAGE 4 YARD
- 15 RECYCLING 3 YARD
- 16 PAPER RECYCLING
- 17 DRAIN CONNECTED TO SANITARY SEWER
- 18 CONCRETE PAD

FLOOR PLAN
1/8" = 1'-0"



NEW BUILDING
RIO VISTA
MANUFACTURING
10 POPPY HOUSE ROAD
RIO VISTA CA 94571
APN 0178-230-012

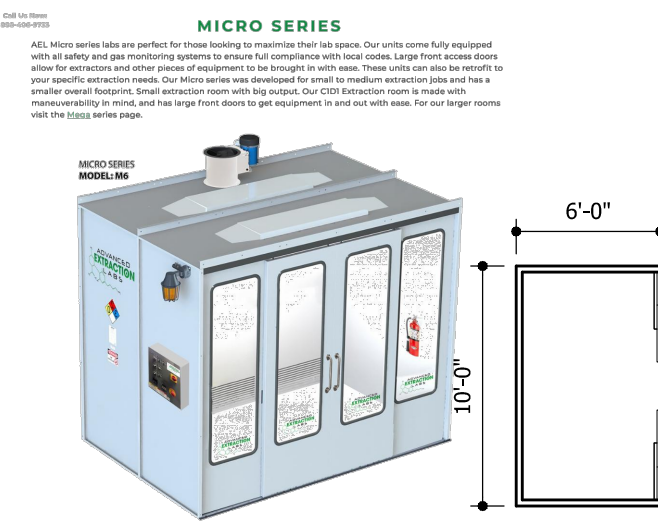
SHEET SCALE 1/8" = 1'-0"
0 2 4 8 16

02/21/2021

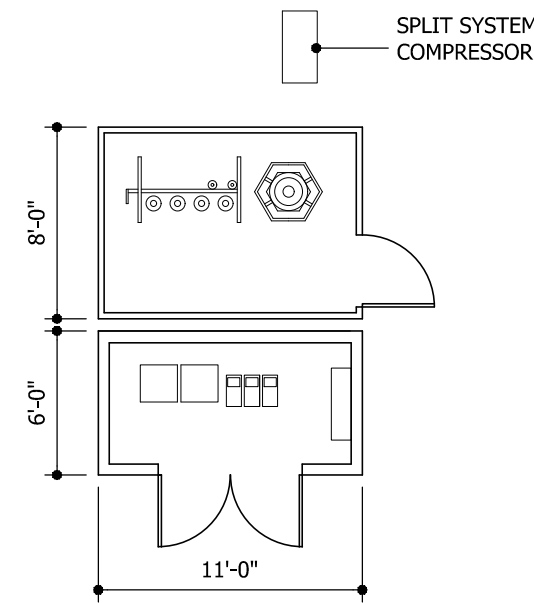
date

A3.2

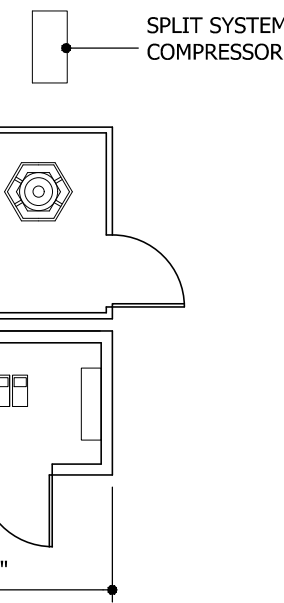
WALK IN HOOD



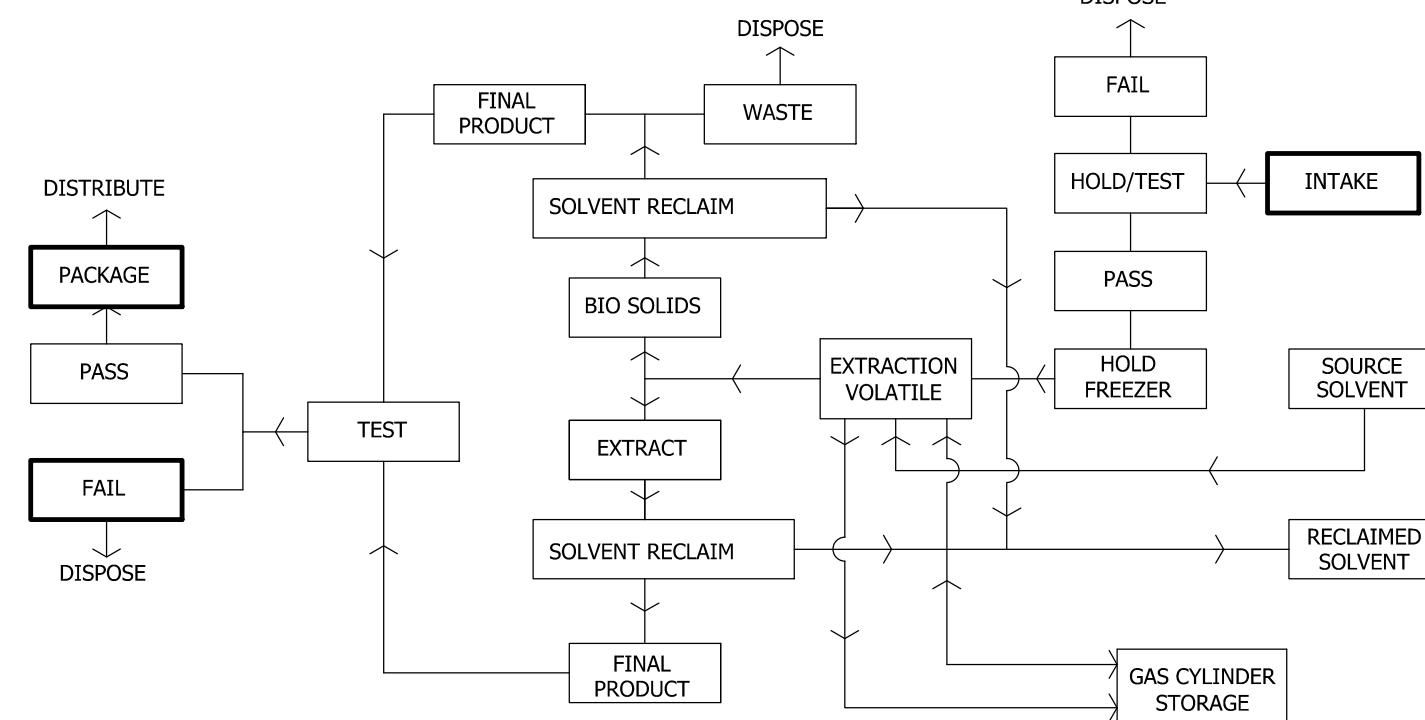
BOOTH EQUIPMENT



BOOTH PLAN



PROCESS DIAGRAM



MICRO SERIES
This hood is designed for use in a laboratory or industrial setting. It features a stainless steel interior and a heavy-duty construction. The hood is equipped with a microprocessor control system that allows for precise temperature and flow rate control. The hood is also equipped with a safety interlock system that prevents the hood from being opened when the flow rate is not at the setpoint. The hood is available in a variety of sizes and configurations to meet your specific needs.

HOOD Style Booths
The hood style booth is designed for use in a laboratory or industrial setting. It features a stainless steel interior and a heavy-duty construction. The hood is equipped with a microprocessor control system that allows for precise temperature and flow rate control. The hood is also equipped with a safety interlock system that prevents the hood from being opened when the flow rate is not at the setpoint. The hood is available in a variety of sizes and configurations to meet your specific needs.