

AVAILABLE FOR LEASE

Lease Rate: \$1.55-\$2.10/SF MG

AUGUSTA PARK



1481, 1485, 1489 W Warm Springs Road | Henderson, NV 89014

PROPERTY DESCRIPTION

AUGUSTA PARK is a high profile $\pm 75,000$ sf 1-story office complex located on West Warm Springs Road, just a block west of Stephanie Street. From the all-brick construction to the lush park-like setting, Augusta Park provides arguably some of the finest office spaces available in the Henderson submarket, and at affordable rates.

PROPERTY HIGHLIGHTS

- **FREE RENT INCENTIVES** (conditions apply).
- Tenant improvement packages available (conditions apply).
- Only 1.5 miles from I-515 via North Stephanie Street and West of Sunset Road (approx 6 min), and 2.1 miles from I-215 via Stephanie Street (approx 5 min).
- Great mix of medical, dental, legal, and other professional tenants.
- Large secluded courtyard with nice landscaping.

FOR MORE INFORMATION CONTACT:

GERI JAMESON | NV Lic # S.0190514

o: 702.787.0123 | c: 702.907.0767 | leasing@virtusco.com

2490 Paseo Verde Pkwy, Ste 115, Henderson, NV 89074 | 702.787.0123 ph | 702.463.0123 fax

This statement with the information it contains is given with the understanding that all negotiations relating to the purchase, renting or leasing of the property described above shall be conducted through this office. The above information while not guaranteed has been secured from sources we believe to be reliable.

virtus
commercial

www.virtusco.com

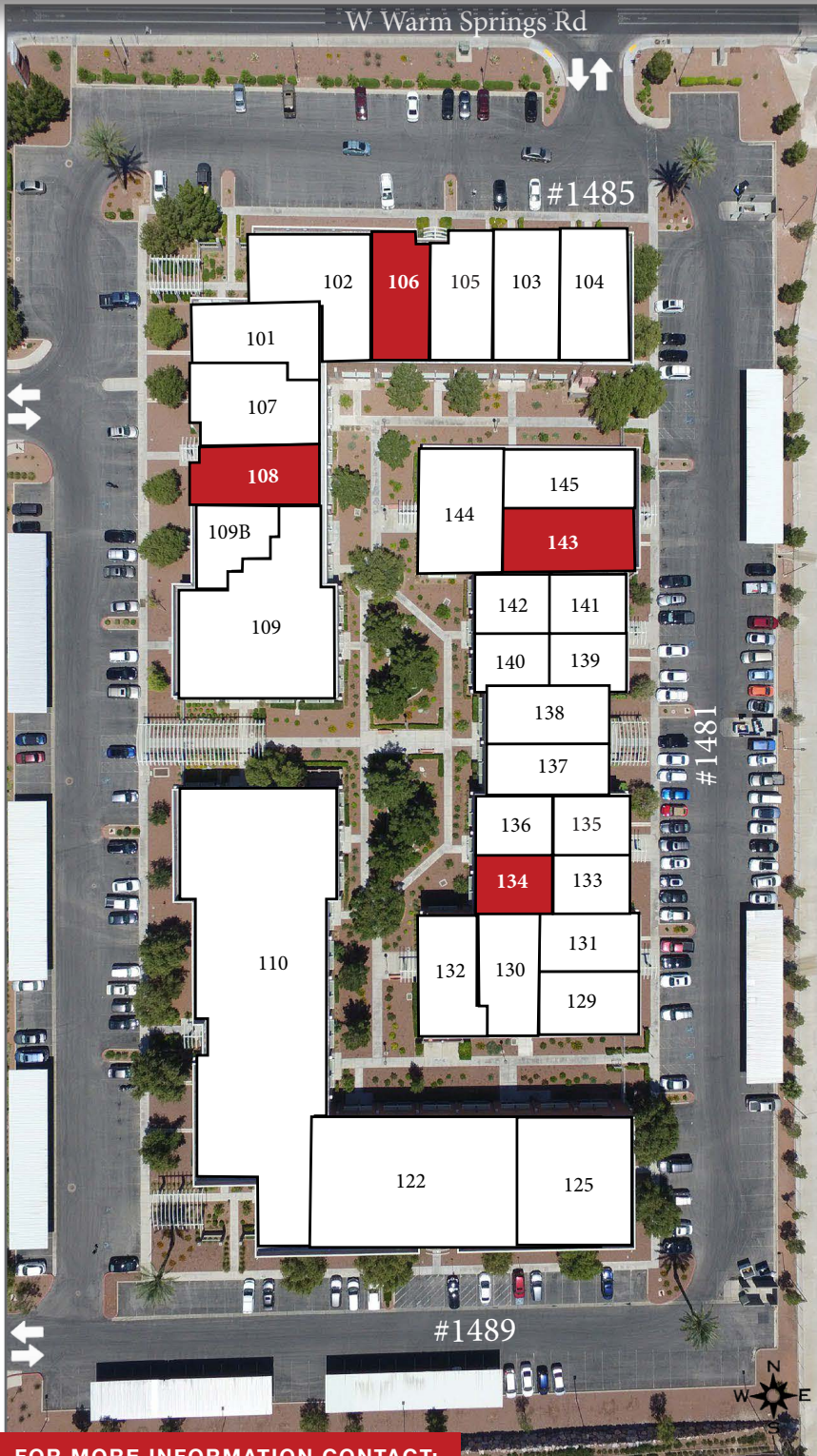
AVAILABLE FOR LEASE

Lease Rate: \$1.55-\$2.10/SF MG

AUGUSTA PARK

PARK-LIKE SETTING OFFICE COMPLEX

1481, 1485, 1489 W Warm Springs Road | Henderson, NV 89014



AVAILABLE SUITE(S)

SUITE	SIZE	TENANT
1481-129	1,527	In-House Home Health
1481-130	1,807	JFR Consulting Inc
1481-131	1,511	Dr Christo Hadjiev
1481-132	1,488	Peddieson & Davis
1481-133	1,179	Pinnacle Therapeutic
1481-134	1,179	AVAILABLE
1481-135	1,121	Everest Home Health
1481-136	1,121	Mothers Choice Midwifery
1481-137	1,655	Green Valley Club
1481-138	1,655	GO Therapy
1481-139	1,128	Wilwin Services
1481-140	1,126	Doyle Law Group
1481-141	1,179	Farmers
1481-142	1,179	Akana
1481-143	1,915	AVAILABLE (Shell)
1481-144	2,520	Designated Defense
1481-145	1,952	Jiu-Jitsu Academy
1485-101	2,128	Alan Sevy MD
1485-102	2,911	Kenneth E Fatkin
1485-103	2,288	Gerald Casas MD Ltd
1485-104	2,024	Michael E Hughes DDS
1485-105	2,100	Fingerprinting Express
1485-106	2,000	AVAILABLE
1485-107	2,465	Nevada Community Mgmt
1485-108	1,981	AVAILABLE (Shell)
1485-109	5,948	State of NV Dept of Admin
1485-109B	1,074	Fong Precision Care
1489-110	14,533	Henderson Executive
1489-122	7,276	Davita Green Valley
1489-125	3,026	The Day Chiropractic

FOR MORE INFORMATION CONTACT:

GERI JAMESON | NV Lic # S.0190514

o: 702.787.0123 | c: 702.907.0767 | leasing@virtusco.com

2490 Paseo Verde Pkwy, Ste 115, Henderson, NV 89074 | 702.787.0123 ph | 702.463.0123 fax

This statement with the information it contains is given with the understanding that all negotiations relating to the purchase, renting or leasing of the property described above shall be conducted through this office. The above information while not guaranteed has been secured from sources we believe to be reliable.

virtus
commercial

www.virtusco.com

AVAILABLE FOR LEASE

Lease Rate: \$1.55-\$2.10/SF MG

AUGUSTA PARK

PARK-LIKE SETTING OFFICE COMPLEX

1481, 1485, 1489 W Warm Springs Road | Henderson, NV 89014

1481 W Warm Springs Rd - SUITE 134 (1,179 SF) - Asking Rate: \$1.75/sf



FOR MORE INFORMATION CONTACT:

GERI JAMESON | NV Lic # S.0190514

o: 702.787.0123 | c: 702.907.0767 | leasing@virtusco.com

2490 Paseo Verde Pkwy, Ste 115, Henderson, NV 89074 | 702.787.0123 ph | 702.463.0123 fax

This statement with the information it contains is given with the understanding that all negotiations relating to the purchase, renting or leasing of the property described above shall be conducted through this office. The above information while not guaranteed has been secured from sources we believe to be reliable.

virtus
commercial

www.virtusco.com

AVAILABLE FOR LEASE

Lease Rate: \$1.55-\$2.10/SF MG

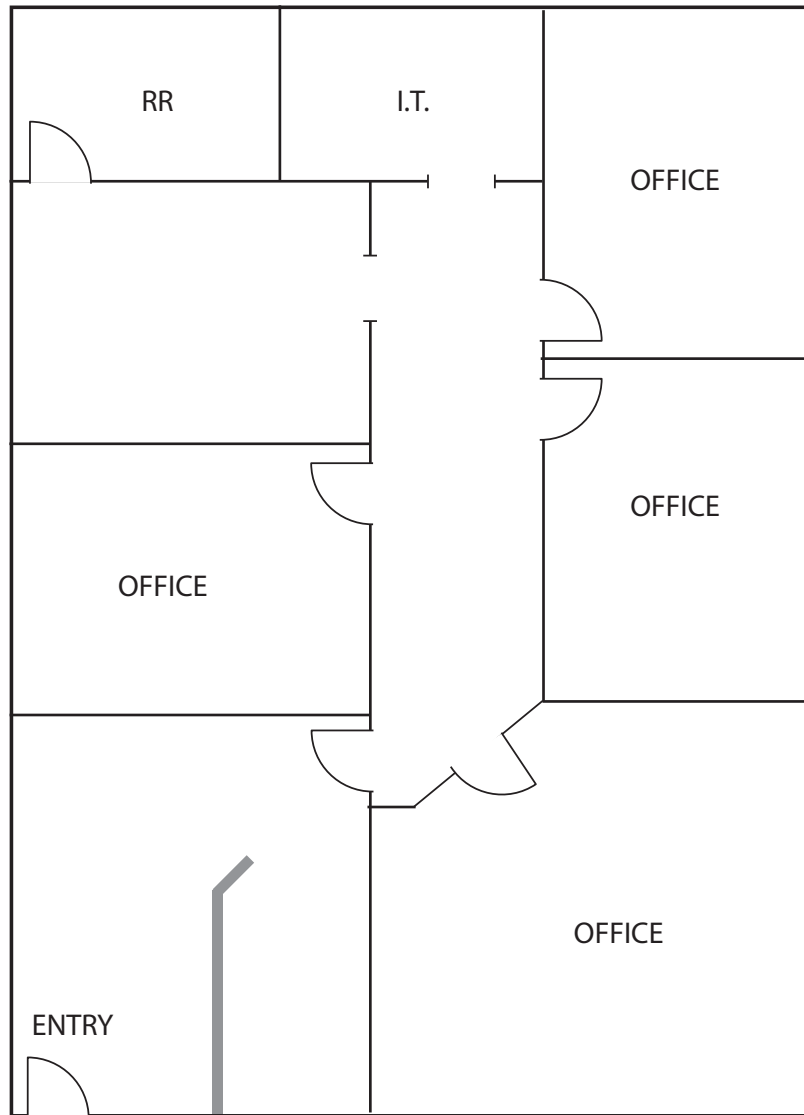
AUGUSTA PARK

PARK-LIKE SETTING OFFICE COMPLEX

1481, 1485, 1489 W Warm Springs Road | Henderson, NV 89014

FLOOR PLAN

1481 W Warm Springs Rd - SUITE 134 (1,179 SF)



Floor plan is not to exact scale. It is intended for general information purposes only.

FOR MORE INFORMATION CONTACT:

GERI JAMESON | NV Lic # S.0190514

o: 702.787.0123 | c: 702.907.0767 | leasing@virtusco.com

2490 Paseo Verde Pkwy, Ste 115, Henderson, NV 89074 | 702.787.0123 ph | 702.463.0123 fax

This statement with the information it contains is given with the understanding that all negotiations relating to the purchase, renting or leasing of the property described above shall be conducted through this office. The above information while not guaranteed has been secured from sources we believe to be reliable.

virtus
commercial

www.virtusco.com

AVAILABLE FOR LEASE

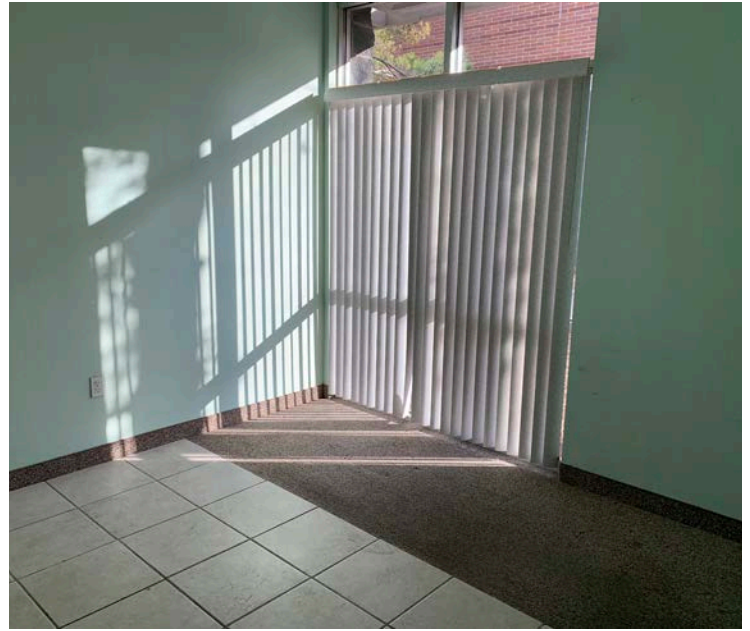
Lease Rate: \$1.55-\$2.10/SF MG

AUGUSTA PARK

PARK-LIKE SETTING OFFICE COMPLEX

1481, 1485, 1489 W Warm Springs Road | Henderson, NV 89014

1485 W Warm Springs Rd - SUITE 106 (2,000 SF) - Asking Rate: \$2.10/sf



FOR MORE INFORMATION CONTACT:

GERI JAMESON | NV Lic # S.0190514

o: 702.787.0123 | c: 702.907.0767 | leasing@virtusco.com

2490 Paseo Verde Pkwy, Ste 115, Henderson, NV 89074 | 702.787.0123 ph | 702.463.0123 fax

This statement with the information it contains is given with the understanding that all negotiations relating to the purchase, renting or leasing of the property described above shall be conducted through this office. The above information while not guaranteed has been secured from sources we believe to be reliable.

virtus
commercial

www.virtusco.com

AVAILABLE FOR LEASE

Lease Rate: \$1.55-\$2.10/SF MG

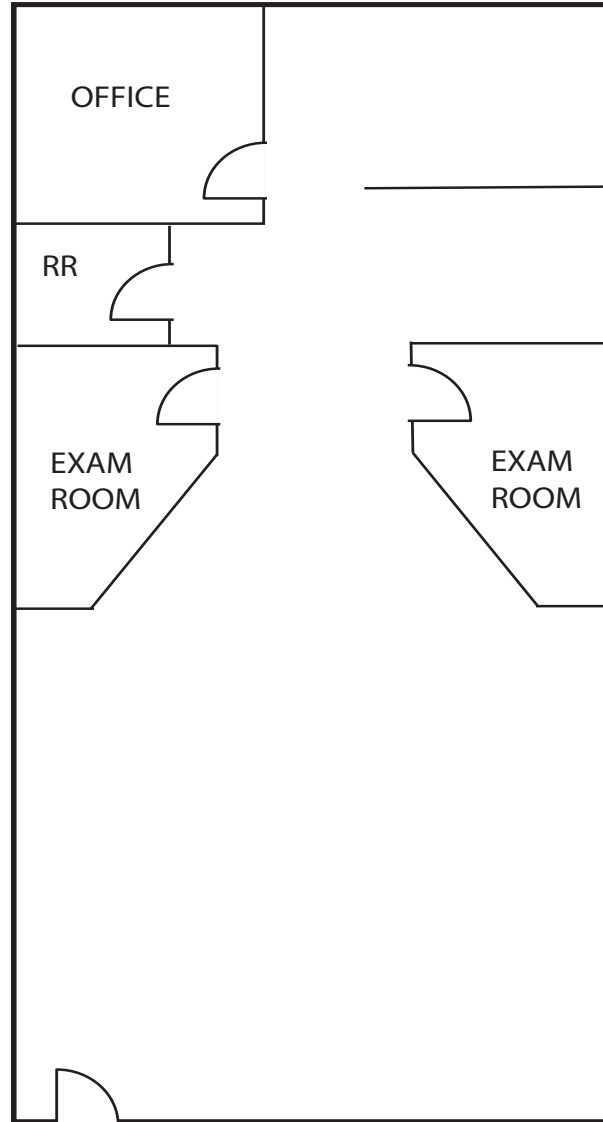
AUGUSTA PARK

PARK-LIKE SETTING OFFICE COMPLEX

1481, 1485, 1489 W Warm Springs Road | Henderson, NV 89014

FLOOR PLAN

1485 W Warm Springs Rd - SUITE 106 (2,000 SF)



Floor plan is not to exact scale. It is intended for general information purposes only.

FOR MORE INFORMATION CONTACT:

GERI JAMESON | NV Lic # S.0190514

o: 702.787.0123 | c: 702.907.0767 | leasing@virtusco.com

2490 Paseo Verde Pkwy, Ste 115, Henderson, NV 89074 | 702.787.0123 ph | 702.463.0123 fax

This statement with the information it contains is given with the understanding that all negotiations relating to the purchase, renting or leasing of the property described above shall be conducted through this office. The above information while not guaranteed has been secured from sources we believe to be reliable.

virtus
commercial

www.virtusco.com

AVAILABLE FOR LEASE

Lease Rate: \$1.55-\$2.10/SF MG

AUGUSTA PARK

PARK-LIKE SETTING OFFICE COMPLEX

1481, 1485, 1489 W Warm Springs Road | Henderson, NV 89014

1485 W Warm Springs Rd - SUITE 108 (1,981 SF) - Asking Rate: \$2.00/sf



FOR MORE INFORMATION CONTACT:

GERI JAMESON | NV Lic # S.0190514

o: 702.787.0123 | c: 702.907.0767 | leasing@virtusco.com

2490 Paseo Verde Pkwy, Ste 115, Henderson, NV 89074 | 702.787.0123 ph | 702.463.0123 fax

This statement with the information it contains is given with the understanding that all negotiations relating to the purchase, renting or leasing of the property described above shall be conducted through this office. The above information while not guaranteed has been secured from sources we believe to be reliable.

virtus
commercial

www.virtusco.com

AVAILABLE FOR LEASE

Lease Rate: \$1.55-\$2.10/SF MG

AUGUSTA PARK

PARK-LIKE SETTING OFFICE COMPLEX

1481, 1485, 1489 W Warm Springs Road | Henderson, NV 89014

1481 W Warm Springs Rd - SUITE 143 (1,915 SF) - Asking Rate: \$1.55/sf



FOR MORE INFORMATION CONTACT:

GERI JAMESON | NV Lic # S.0190514

o: 702.787.0123 | c: 702.907.0767 | leasing@virtusco.com

2490 Paseo Verde Pkwy, Ste 115, Henderson, NV 89074 | 702.787.0123 ph | 702.463.0123 fax

This statement with the information it contains is given with the understanding that all negotiations relating to the purchase, renting or leasing of the property described above shall be conducted through this office. The above information while not guaranteed has been secured from sources we believe to be reliable.

virtus
commercial

www.virtusco.com

AVAILABLE FOR LEASE

Lease Rate: \$1.55-\$2.10/SF MG

AUGUSTA PARK

PARK-LIKE SETTING OFFICE COMPLEX

1481, 1485, 1489 W Warm Springs Road | Henderson, NV 89014



FOR MORE INFORMATION CONTACT:

GERI JAMESON | NV Lic # S.0190514

o: 702.787.0123 | c: 702.907.0767 | leasing@virtusco.com

2490 Paseo Verde Pkwy, Ste 115, Henderson, NV 89074 | 702.787.0123 ph | 702.463.0123 fax

This statement with the information it contains is given with the understanding that all negotiations relating to the purchase, renting or leasing of the property described above shall be conducted through this office. The above information while not guaranteed has been secured from sources we believe to be reliable.

virtus
commercial

www.virtusco.com

These maps are intended for general information purposes only. It is not to exact scale, and exact boundaries of areas may differ.