

2001
SAINT LOUIS

301
W ARLINGTON



**2001 Saint Louis +
301 West Arlington**

FORT WORTH, TX 76110

**INDUSTRIAL/FLEX FOR SALE OR LEASE
NEAR DOWNTOWN FORT WORTH & MEDICAL DISTRICT**

Two (2) Buildings Totaling 24,847 SF

 **STREAM**[®]

2001 SAINT LOUIS AVE
17,707 SF

301 W ARLINGTON AVE
7,140 SF

INDUSTRIAL/FLEX FOR SALE OR LEASE

Two (2) Buildings Totaling 24,847 SF



MATT BLACKBURN | 817.502.8179 | MATT.BLACKBURN@STREAMREALTY.COM

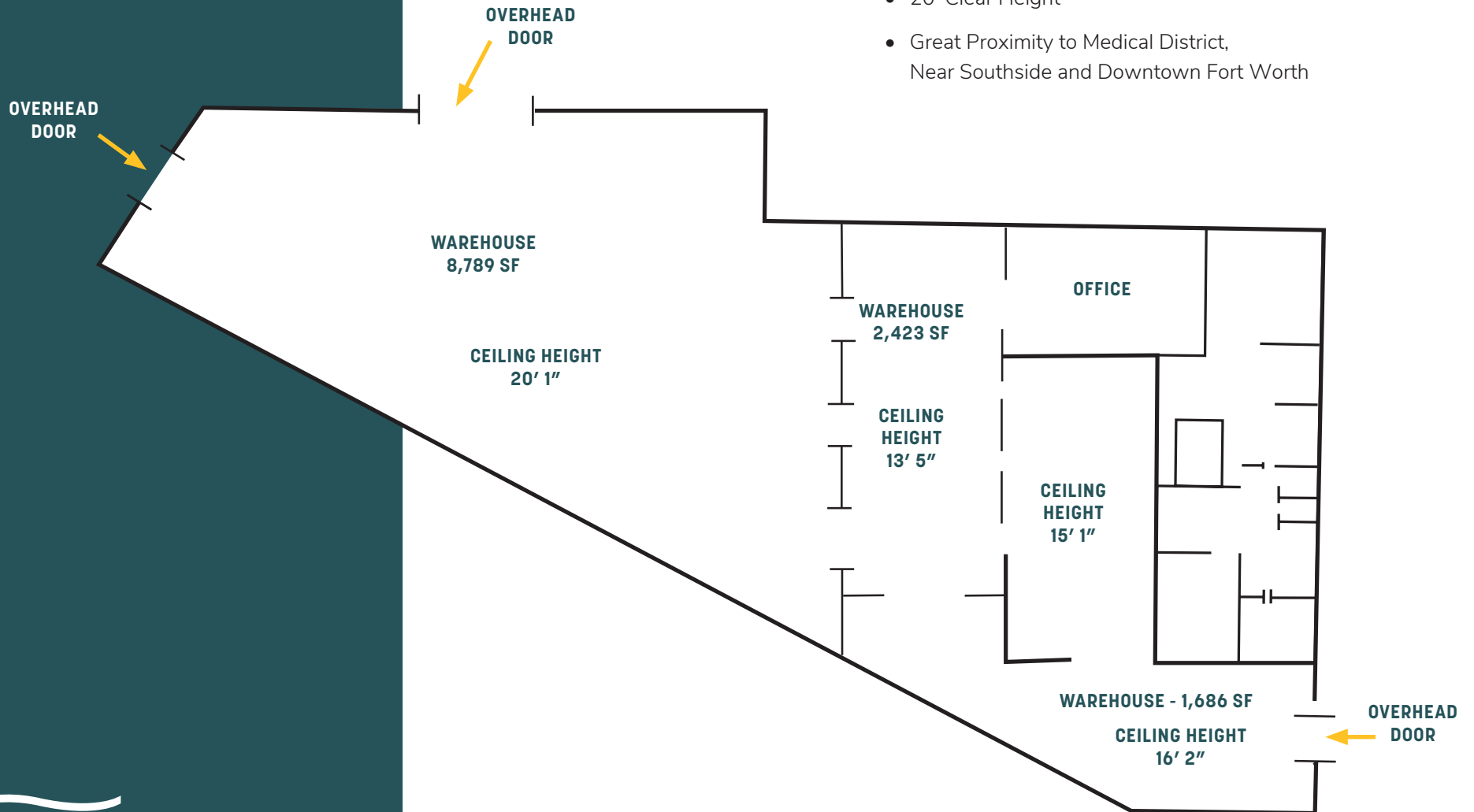
JEFF REIN | 817.877.1309 | JEFF.REIN@STREAMREALTY.COM



2001 SAINT LOUIS

PROPERTY SPECIFICATIONS

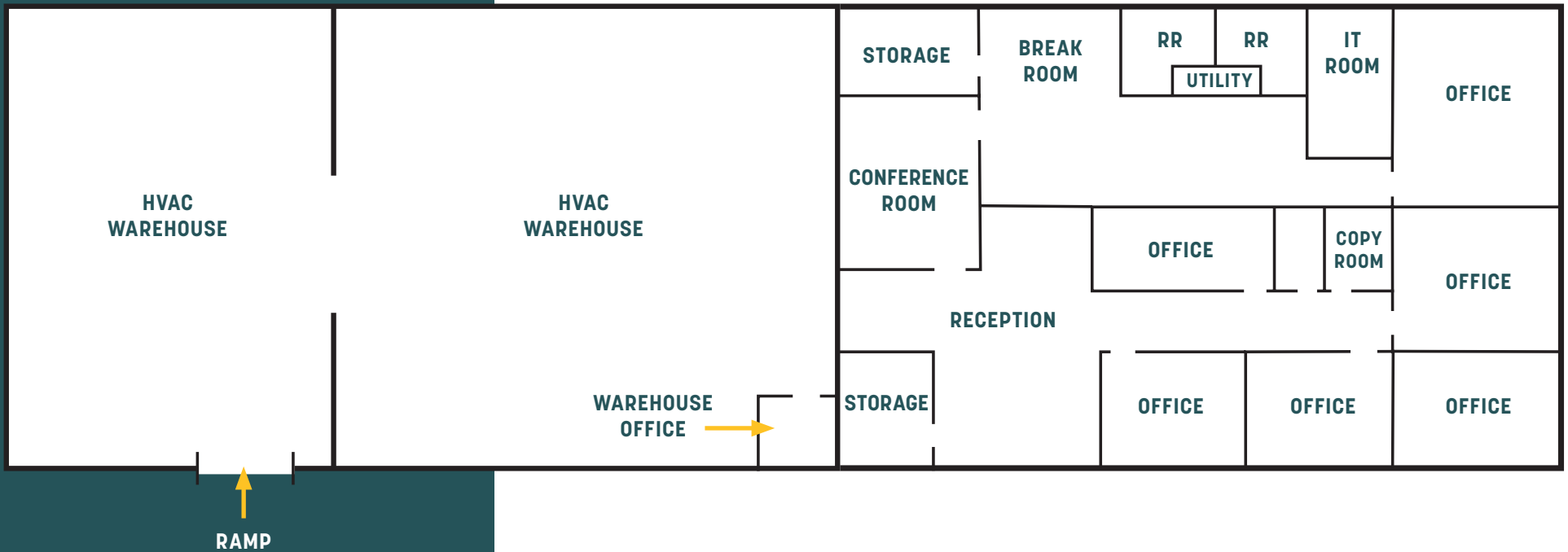
- 17,707 SF
- 2,700 SF Office
- 400 A, 240V, 3-Phase Power
- Three (3) Grade Level Doors
- 20' Clear Height
- Great Proximity to Medical District,
Near Southside and Downtown Fort Worth



301 W ARLINGTON

PROPERTY SPECIFICATIONS

- 7,140 SF
- 4,030 SF Office
- 100% HVAC
- One (1) Grade Level Door
- 12' Clear Height
- Great Proximity to Medical District,
Near Southside and Downtown Fort Worth





MATT BLACKBURN | 817.502.8179 | MATT.BLACKBURN@STREAMREALTY.COM
JEFF REIN | 817.877.1309 | JEFF.REIN@STREAMREALTY.COM





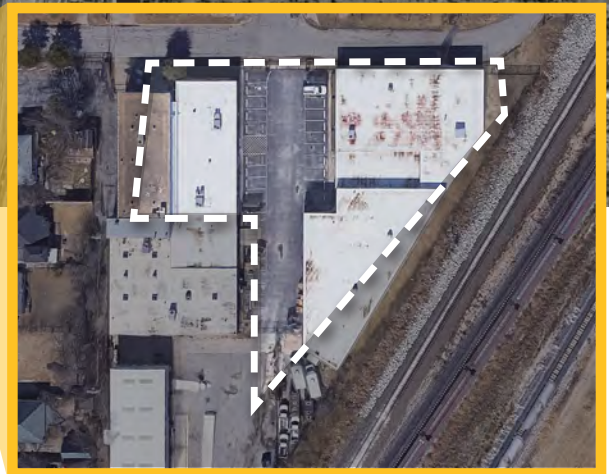
MATT BLACKBURN | 817.502.8179 | MATT.BLACKBURN@STREAMREALTY.COM

JEFF REIN | 817.877.1309 | JEFF.REIN@STREAMREALTY.COM





Location Highlights



2001 | 301

SAINT LOUIS | W ARLINGTON

MATT BLACKBURN | 817.502.8179 | MATT.BLACKBURN@STREAMREALTY.COM

JEFF REIN | 817.877.1309 | JEFF.REIN@STREAMREALTY.COM

