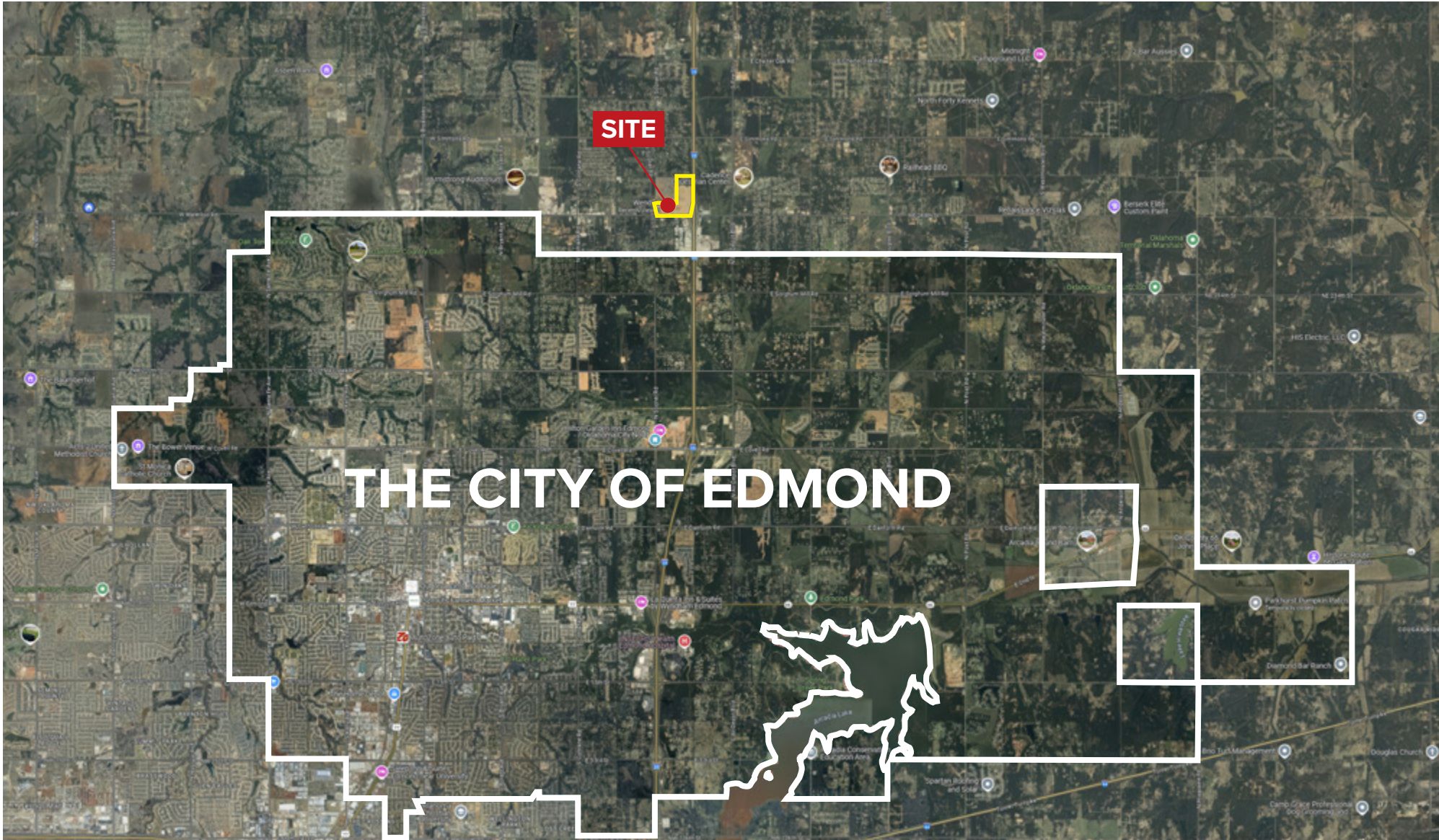


# I-35 & Waterloo Rd - The Landing at Waterloo



TOMMY HAINES: (405) 503-9697

The information contained herein was obtained from sources deemed reliable; however, no guarantees, warranties or representations as to the completeness or accuracy thereof. The presentation of this real estate information is subject to errors; omissions; change of price; prior sale or lease; or withdrawal without notice.



# I-35 & Waterloo Rd - The Landing at Waterloo

## PROPERTY FACTS

Price	\$522,320 - \$19,048,304
Property Type	Land
Sale Type	Investment
Property Subtype	Commercial
Sale Conditions	Build to Suit
Proposed Use	Retail
No. Lots	35
Total Lot Size	148.26 AC

## 35 LOTS AVAILABLE



## INVESTMENT HIGHLIGHTS

- The Landing at Waterloo: 150-acre mixed-use development for residential, hotels, restaurants, retail, and more.
- Prime location at I-35 and Waterloo Rd with 49,000+ vehicles passing daily.
- Rapid growth area: 43% population increase since 2010, projected 7% more by 2028.
- Shovel-ready tracts with no zoning restrictions and build-to-suit opportunities available.
- Master plan includes 256 residential lots, a 280-unit apartment complex, Starbucks, 7-11, Jack's Car Wash, CAT dealership, and fast food spots.
- Affluent area: \$146,679 average household income within 5 miles, \$767M annual consumer spending.

## EXECUTIVE SUMMARY

Join the transformative development at The Landing at Waterloo in Edmond, Oklahoma. This exclusive land sale or ground lease opportunity by Waterloo 35 Investments spans approximately 108 acres of undeveloped land, with 40 acres already developed.

The mixed-use tract features no zoning restrictions and build-to-suit options. The property boasts two prime corners: one at I-35 and Waterloo Road (S/E corner) and one at Sooner Road and Waterloo (S/W corner), providing roughly 5,280 feet of frontage on Waterloo and 500 feet on Sooner Road.

Planned developments include single-family homes and a 280-unit multifamily complex, The Balance on Waterloo, surrounding a scenic 5-acre water feature. Retailers and services joining the project include Wendy's, Taco Bell, Braum's, Starbucks, a car wash, and a CAT dealership.

Strategically located at the intersection of I-35 and Waterloo Road, the area benefits from high traffic and scheduled expansions of both roads, enhancing accessibility and growth. Ideal for a variety of developments, including residential, hotels, fast food, retail, convenience stores, truck stops, office spaces, medical facilities, senior living, and restaurants, The Landing at Waterloo promises significant growth and opportunity.

TOMMY HAINES: (405) 503-9697

The information contained herein was obtained from sources deemed reliable; however, no guarantees, warranties or representations as to the completeness or accuracy thereof. The presentation of this real estate information is subject to errors; omissions; change of price; prior sale or lease; or withdrawal without notice.

# I-35 & Waterloo Rd - The Landing at Waterloo



TOMMY HAINES: (405) 503-9697

The information contained herein was obtained from sources deemed reliable; however, no guarantees, warranties or representations as to the completeness or accuracy thereof. The presentation of this real estate information is subject to errors; omissions; change of price; prior sale or lease; or withdrawal without notice.

# I-35 & Waterloo Rd - The Landing at Waterloo



TOMMY HAINES: (405) 503-9697

The information contained herein was obtained from sources deemed reliable; however, no guarantees, warranties or representations as to the completeness or accuracy thereof. The presentation of this real estate information is subject to errors; omissions; change of price; prior sale or lease; or withdrawal without notice.