

# 1800

CENTRAL AVENUE

Move-In Ready

Heart of Plaza Midwood



## Surrounding Retail

- Supperland
- Common Market
- Calle Sol
- Harris Teeter
- Undercurrent Coffee
- Painted Rooster
- Legion Brewing
- Giddy Goat



01 Modern Amenities

*Flexible, move-in-ready offices with natural light, stunning views, and an onsite multi-purpose conference room*

02 High Visibility

*On bustling Central Avenue, the property pairs walkability to shops and dining with convenience for clients and employees*

03 Onsite Retail

*Onsite offerings: Modish Nail Salon, Southern Strain Brewery, and Wicks & Whiskers*

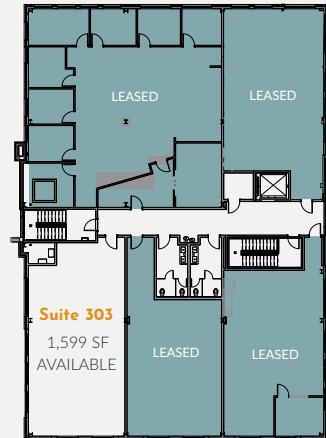


Check us out!

# 1800

CENTRAL AVENUE

THIRD FLOOR



Suite 303 - 1,599 RSF