

OFFICE, MEDICAL, RETAIL | FOR LEASE

TURN-KEY
MEDICAL
SUITE
AVAILABLE



COUNTRY CREEK COMMONS

4986 N ADAMS RD
OAKLAND TOWNSHIP, MI 48306

CBRE

PROPERTY HIGHLIGHTS

**IDEAL OFFICE
OR MEDICAL
ENVIRONMENT
WITH EASY ACCESS
TO NEARBY
RESIDENTIAL AREAS**

**ON-SITE
AMENITIES WITH
ADJACENT
FULL-SERVICE
SHOPPING CENTER**

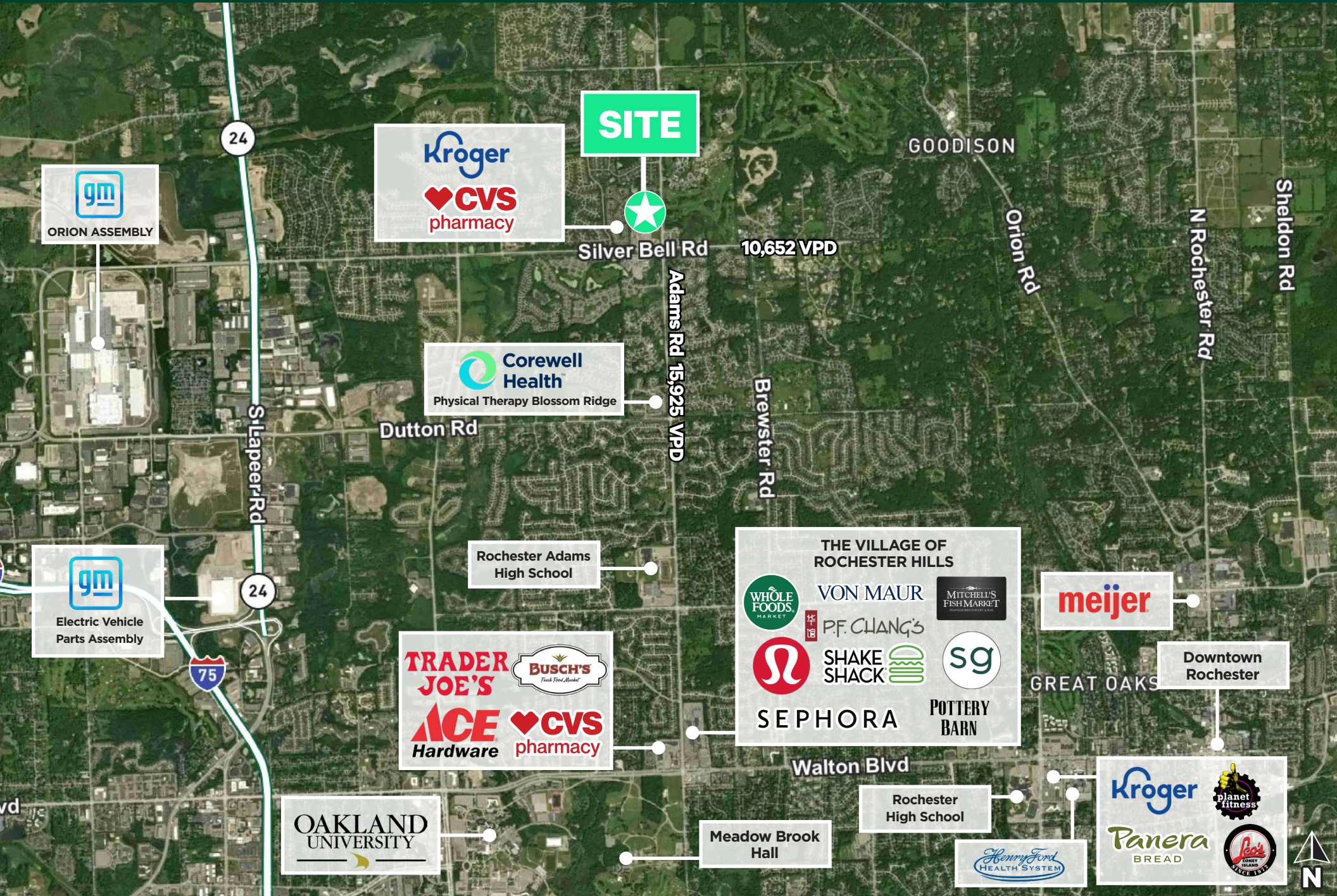
**LOCATED AT THE
INTERSECTION
NWC OF ADAMS &
SILVERBELL ROAD**

**FLEXIBLE SUITE
SIZES FROM
3,700-6,800 SF**

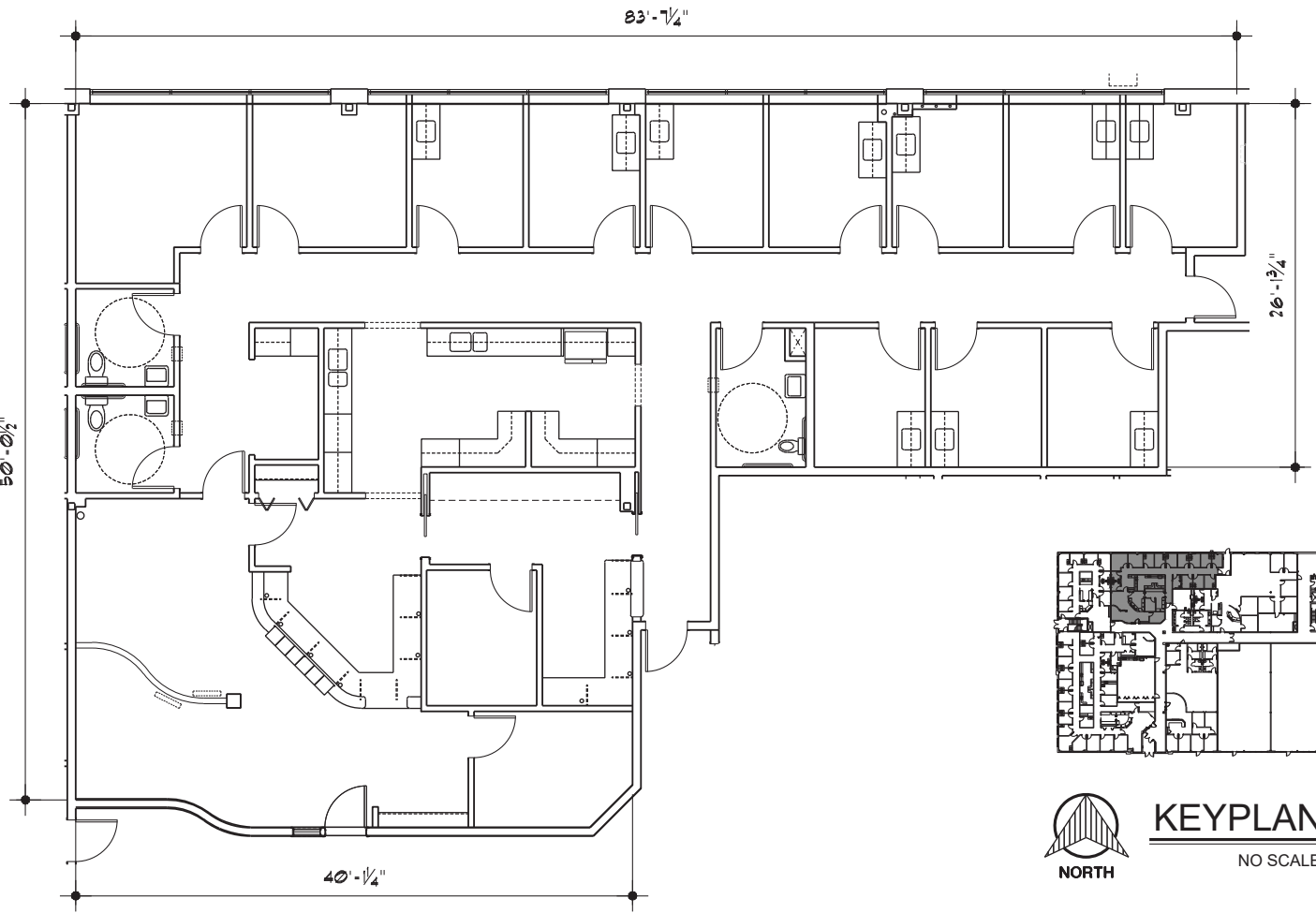
**HIGHLY
PROFESSIONAL
IMAGE WITHOUT
THE CBD OFFICE
OR MEDICAL
PRICING**

**PROFESSIONALLY
MANAGED BUILDING
WITH COMPETITIVE
BUILD-OUT
ALLOWANCES**

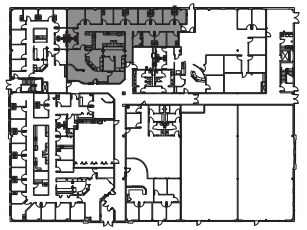
MACRO MAP



FLOOR PLAN: SUITE C



- Turnkey medical suite
- Former pediatrician office
- 10 exam rooms with sinks
- 3 bathrooms within the suite
- 3,668 RSF



 **KEYPLAN**
NO SCALE



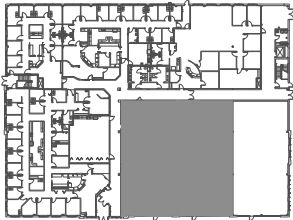
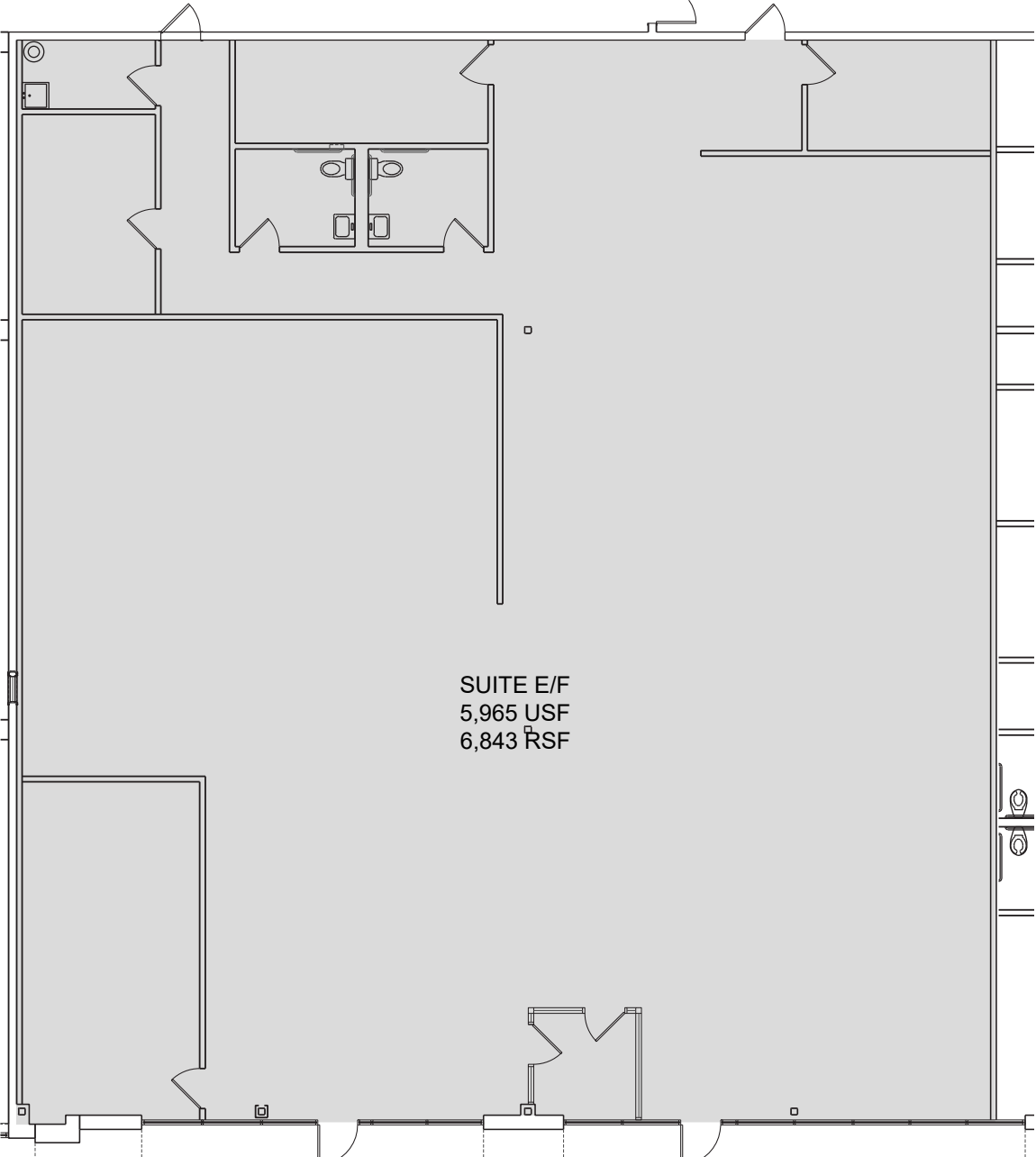
SUITE C
COUNTRY CREEK COMMONS
OAKLAND TWP., MICHIGAN

3,215 U.S.F. / 3,688 R.S.F. SCALE: 3/32" = 1'-0"

PHOTOS: SUITE C



FLOOR PLAN: SUITE E/F



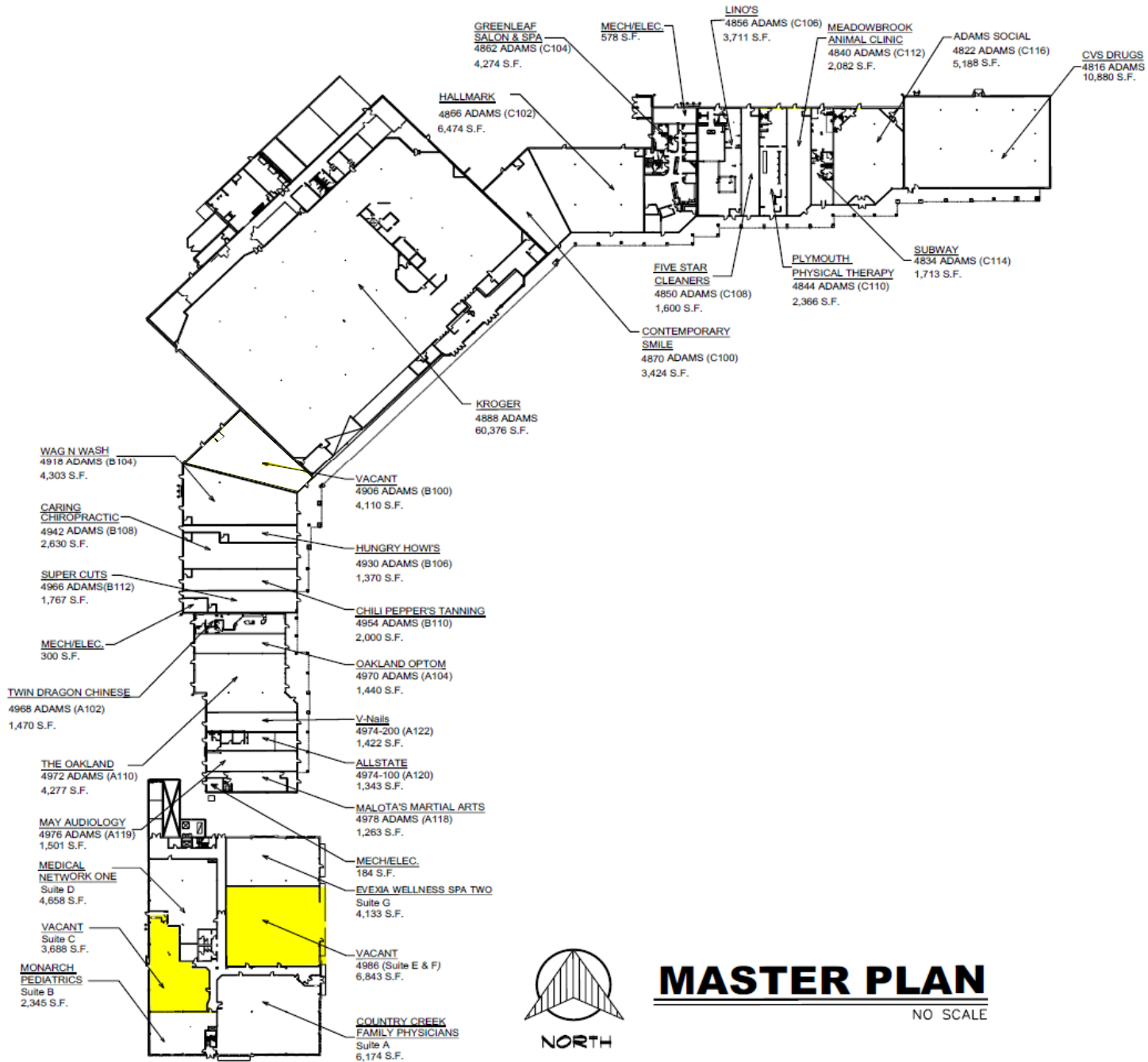
KEYPLAN
NO SCALE



SUITE E & F
COUNTRY CREEK
COMMONS
OAKLAND TWP.

SCALE: 3/32" = 1'-0"

SITE PLAN



MASTER PLAN

NO SCALE



Suite C

Suite E/F



4986 N ADAMS RD, OAKLAND TOWNSHIP, MI

BRENDAN GEORGE

Senior Vice President
+1 248 351 2039
brendan.george@cbre.com

JASPER HANIFI

First Vice President
+1 248 351 2020
jasper.hanifi@cbre.com

MATT CROSWELL

First Vice President
+1 248 351 2084
matt.croswell@cbre.com



© 2026 CBRE, Inc. All rights reserved. This information has been obtained from sources believed reliable, but has not been verified for accuracy or completeness. You should conduct a careful, independent investigation of the property and verify all information. Any reliance on this information is solely at your own risk. CBRE and the CBRE logo are service marks of CBRE, Inc. All other marks displayed on this document are the property of their respective owners, and the use of such logos does not imply any affiliation with or endorsement of CBRE. Photos herein are the property of their respective owners. Use of these images without the express written consent of the owner is prohibited.