

# Waterman Building

80 SE Madison Street, Portland, OR 97214

## FOR LEASE



The Waterman Building is home to 4 floors of modern office space and a restaurant / retail space on the first floor. Step into the building and find a furnished lobby with a conference room and a restaurant. Nestled in Portland's Central Eastside, this neighborhood has a nouveau-industrial chic personality, and the Waterman Building's spaces perfectly mirror that creative and artistic vibe. Just minutes from the Esplanade and Tilikum Crossing and with secure bike storage, commuter showers, and private gender-neutral restrooms, commuting to the Waterman is a dream.

**Matt Schweitzer**

[matt@northrimpx.com](mailto:matt@northrimpx.com)

503-525-1927



[northrimpx.com](http://northrimpx.com)

819 SE Morrison Street, Ste 110, Portland OR 97214 | 503-525-1925

FOR LEASE

## Waterman Building

80 SE Madison St. Portland, OR 97214



### Property Details

- Mixed-use building with creative office, retail, and a restaurant suite
- ADA Accessible with elevator service to all floors
- Furnished lobby with conference room with wifi
- Private gender-neutral restrooms
- Bike storage and commuter showers
- Modern, eco-friendly finishes with high ceilings
- Basement storage and garage parking available
- Secure building entry
- Locally owned and professionally managed

### Location Details

- Located in Central Eastside near a mix of food, business, and entertainment
- Close to bus lines and street car access
- Close to Highways I-5, 99E, and downtown bridges
- Near Tilikum Bridge and the Esplanade

Matt Schweitzer

matt@northrimpx.com

503-525-1927

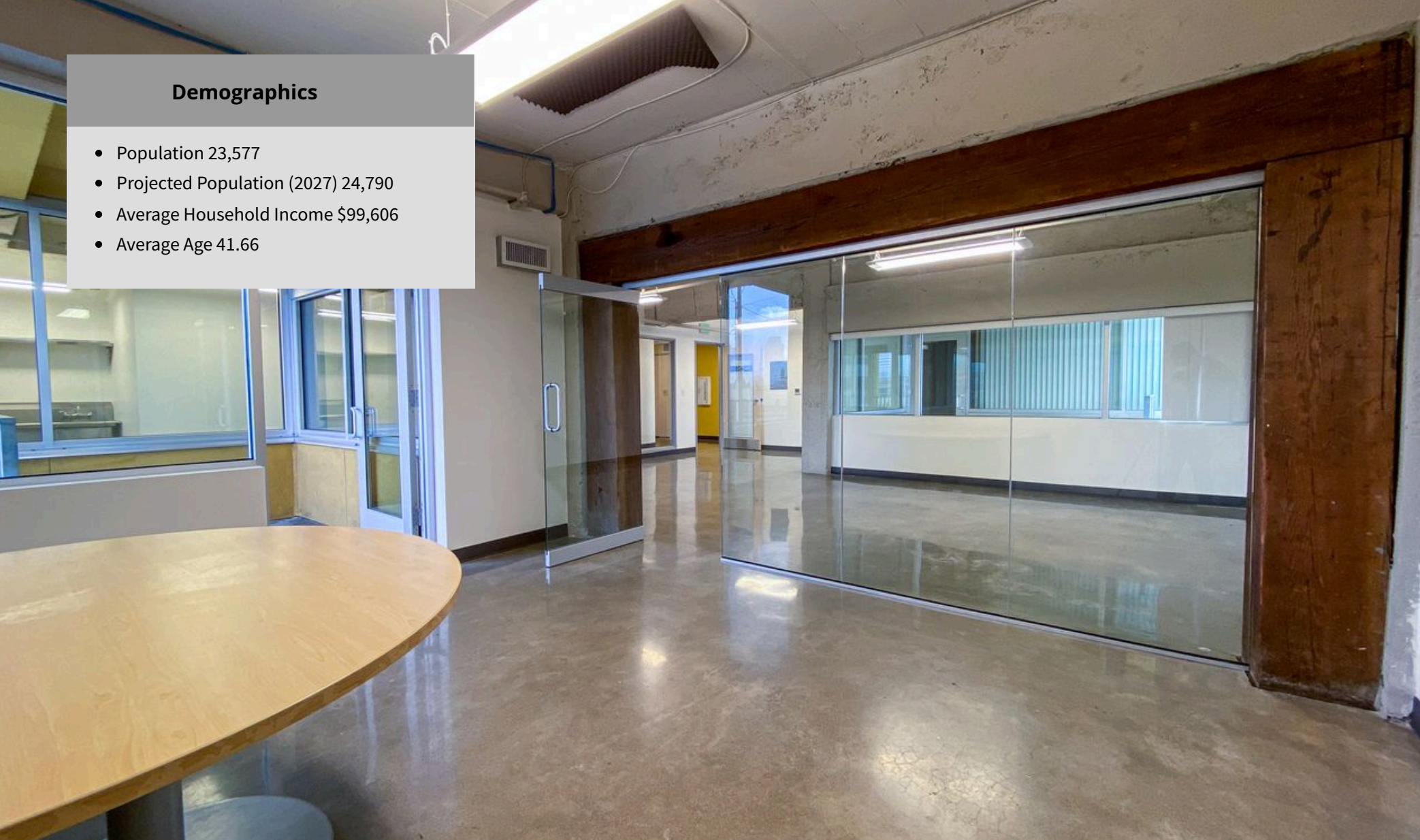


northrimpx.com

819 SE Morrison Street, Ste 110, Portland OR 97214 | 503-525-1925

## Demographics

- Population 23,577
- Projected Population (2027) 24,790
- Average Household Income \$99,606
- Average Age 41.66



**Waterman Building**  
Office | Restaurant | Retail

**FOR LEASE**

**Matt Schweitzer**  
matt@northrimpx.com | 503-525-1927



**northrimpx.com**  
819 SE Morrison Street, Ste 110, Portland OR 97214 | 503-525-1925



# Waterman Building

Office | Restaurant | Retail

## FOR LEASE

### Matt Schweitzer

matt@northrimpx.com

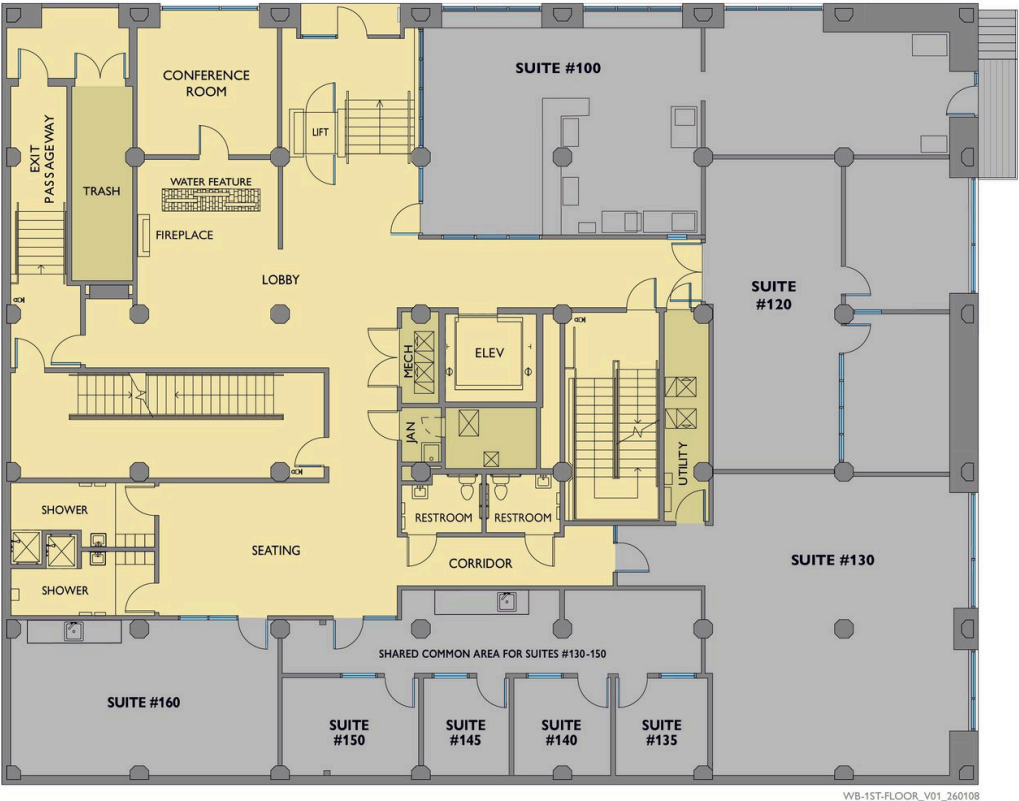
503-525-1927



[northrimpx.com](http://northrimpx.com)

819 SE Morrison Street, Ste 110, Portland OR 97214 | 503-525-1925

# FLOOR PLAN



WB-1ST-FLOOR\_V01\_260108

## Waterman Building

Office | Restaurant | Retail

FOR LEASE

Matt Schweitzer

matt@northrimpdx.com

503-525-1927



northrimpdx.com

819 SE Morrison Street, Ste 110, Portland OR 97214 | 503-525-1925

The information contained in this package has been obtained from sources we believe to be reliable. While we do not doubt its accuracy, we have not verified it and make no guarantee, warranty or representation about it. It is your sole responsibility to independently confirm its accuracy and completeness. Any projections, opinions, assumptions or estimates used are for example only and do not represent the current or future performance of the property. ©2026 North Rim Commercial Properties

# SECOND FLOOR



## Waterman Building

Office | Restaurant | Retail

FOR LEASE

**Matt Schweitzer**

matt@northrimpx.com

503-525-1927

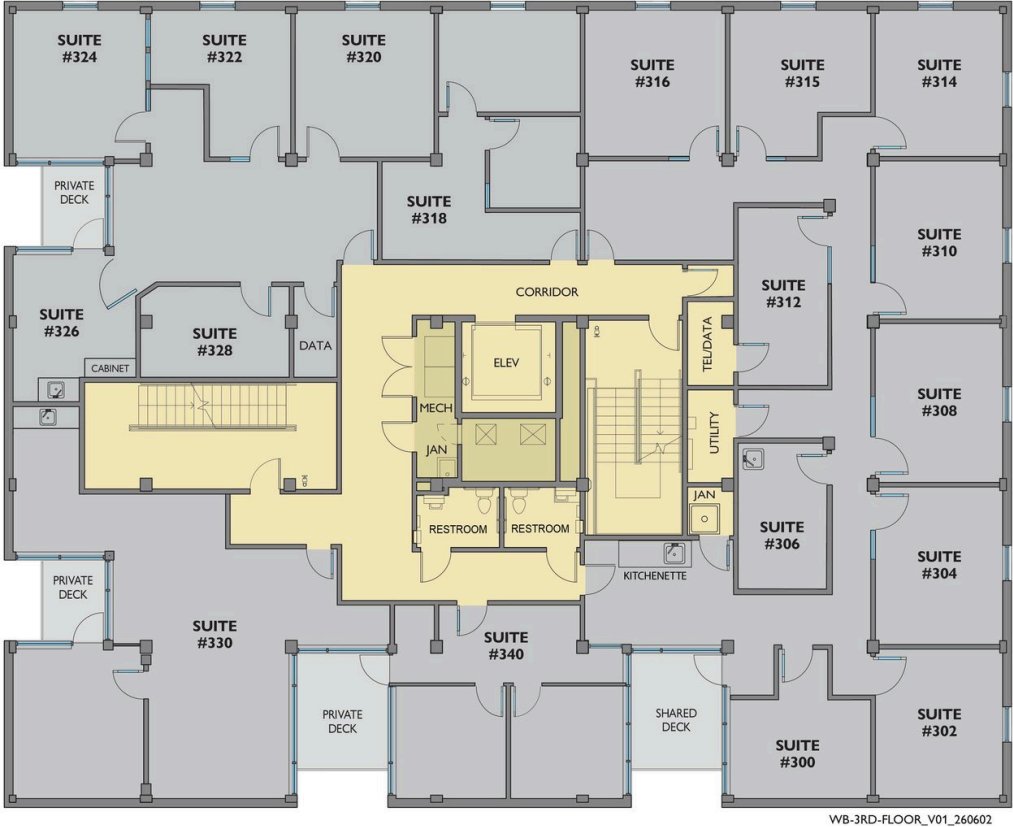


**northrimpx.com**

819 SE Morrison Street, Ste 110, Portland OR 97214 | 503-525-1925

The information contained in this package has been obtained from sources we believe to be reliable. While we do not doubt its accuracy, we have not verified it and make no guarantee, warranty or representation about it. It is your sole responsibility to independently confirm its accuracy and completeness. Any projections, opinions, assumptions or estimates used are for example only and do not represent the current or future performance of the property. ©2026 North Rim Commercial Properties

# THIRD FLOOR



## Waterman Building

Office | Restaurant | Retail

FOR LEASE

Matt Schweitzer

matt@northrimpx.com

503-525-1927



northrimpx.com

819 SE Morrison Street, Ste 110, Portland OR 97214 | 503-525-1925

The information contained in this package has been obtained from sources we believe to be reliable. While we do not doubt its accuracy, we have not verified it and make no guarantee, warranty or representation about it. It is your sole responsibility to independently confirm its accuracy and completeness. Any projections, opinions, assumptions or estimates used are for example only and do not represent the current or future performance of the property. ©2026 North Rim Commercial Properties

# FOURTH FLOOR



## Waterman Building

Office | Restaurant | Retail

FOR LEASE

Matt Schweitzer

matt@northrimpdx.com

503-525-1927



northrimpdx.com

819 SE Morrison Street, Ste 110, Portland OR 97214 | 503-525-1925

# BASEMENT



WB-BASEMENT\_V01 250415

## Waterman Building

Office | Restaurant | Retail

FOR LEASE

Matt Schweitzer

matt@northrimpdx.com

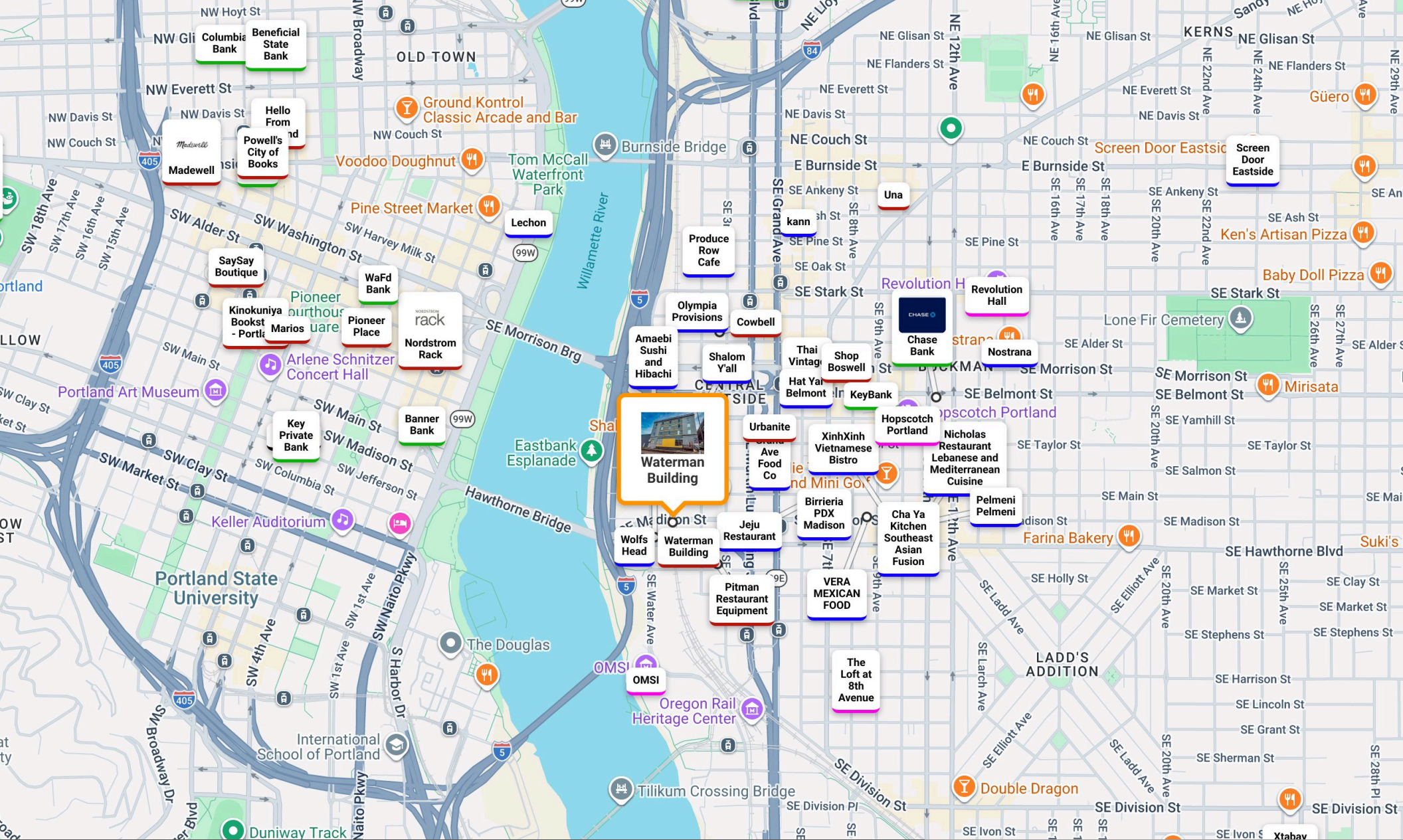
503-525-1927



northrimpdx.com

819 SE Morrison Street, Ste 110, Portland OR 97214 | 503-525-1925

The information contained in this package has been obtained from sources we believe to be reliable. While we do not doubt its accuracy, we have not verified it and make no guarantee, warranty or representation about it. It is your sole responsibility to independently confirm its accuracy and completeness. Any projections, opinions, assumptions or estimates used are for example only and do not represent the current or future performance of the property. ©2026 North Rim Commercial Properties



**Waterman Building**  
80 SE Madison Street, Portland, OR 97214

**FOR LEASE**

**Matt Schweitzer**  
matt@northrimpx.com | 503-525-1927



**northrimpx.com**  
819 SE Morrison Street, Ste 110, Portland OR 97214 | 503-525-1925