

# O'HARE OFFICES



## 1111 E. Touhy Avenue Des Plaines, Illinois



1 OF 3 BUILDINGS  
IN A 450,000 SF  
OFFICE CAMPUS

760 – 67,394 SF  
AVAILABLE SPACE

NEWLY REMODELED  
\$1,000,000 ATRIUM/LOBBY

COMPLIMENTARY  
DIGITAL BILLBOARD  
FOR ALL TENANTS

COMPLIMENTARY  
FITNESS CENTER &  
CONFERENCE FACILITIES

MINUTES FROM O'HARE  
WITH IMMEDIATE  
EXPRESSWAY ACCESS

**Modern workspace solutions designed for teams of every size, with flexible plans that fit any budget.**

**For information contact:**

**IGNACIO FELLER**

Commercial Real Estate Director

(847) 777-9513

ifeller@ohareoffices.com

OhareOffices.com

# PROPERTY OVERVIEW

**O'Hare Offices** is a professionally managed, 450,000-square-foot office campus spanning 28 landscaped acres along Lake Opeka. Located at 999, 1011, and 1111 East Touhy Avenue in Des Plaines, the campus features three five-story buildings with flexible, customizable office suites and a full range of tenant-focused amenities.

Just minutes from Chicago O'Hare International Airport—with immediate access to I-90 and CTA transit—O'Hare Offices delivers the connectivity and infrastructure businesses need for long-term growth, only 18 miles from downtown Chicago.



*The information contained herein has been obtained from sources believed reliable; however, Owner and its representatives make no warranties or representations, express or implied, as to the accuracy or completeness of such information. All information is subject to errors, omissions, change of price, prior lease, or withdrawal without notice.*

# BUILDING FEATURES & AMENITIES

O'HARE OFFICES 

## LOCATION & CONVENIENCE

Ideally positioned near major highways, public transit, and Chicago O'Hare International Airport—offering seamless regional and national access.

## COMPLIMENTARY CONFERENCE ROOMS

Professional, fully equipped conference and training spaces designed for client meetings, team collaboration, presentations, and workshops.

## COMPLIMENTARY DIGITAL BILLBOARD

A high-visibility advertising platform along a major corridor, giving tenants a powerful way to elevate brand exposure.

## ON-SITE DINING

Fresh, convenient food options that help teams stay energized and productive without leaving the campus.

## COMPLIMENTARY VEHICLE CHARGING STATION

On-site EV charging that promotes sustainability and everyday convenience.

## ON-SITE MANAGEMENT TEAM

An experienced, responsive management and engineering team providing dedicated service and day-to-day operational support.

## COMPLIMENTARY FITNESS CENTER

A fully equipped fitness center with lockers and showers—designed to promote employee wellness and support flexible workday routines.

## MOVE-IN-READY & BUILT-TO-SUIT OFFICE SPACES

Versatile office layouts tailored to your operational needs, budget, and long-term growth plans.

## COMPLIMENTARY ATRIUM EVENT SPACE

A spacious on-site venue available for company events, networking functions, and corporate gatherings.

## LOCAL ATTRACTIONS

Surrounded by dining, retail, hospitality, and recreational destinations that enhance the workplace experience.

# PREMIUM WORKSPACE. PRIME LOCATION. EXCEPTIONAL AMENITIES.

## The O'Hare Offices Campus

Offers premium workspaces in a highly convenient location, enhanced by a wide range of modern amenities. With conference and training rooms, along with welcoming collaborative lounges, every detail is designed to support productivity, flexibility, and ease throughout your day.



# O'HARE OFFICES



1111 E. Touhy Ave  
760 – 67,394 SF

## AVAILABLE SUITES

Suite 100 | SF: 2,817

Suite 130 | SF: 3,848

Suite 160 | SF: 2,420

Suite 240 | SF: 9,671

Suite 286 | SF: 4,021

Suite 400 | SF: 31,837  
Entire Floor

Suite 550 | SF: 2,210



Building Type/Class  
Office/B

Year Built/Renovated  
1975

Building Size  
148,444

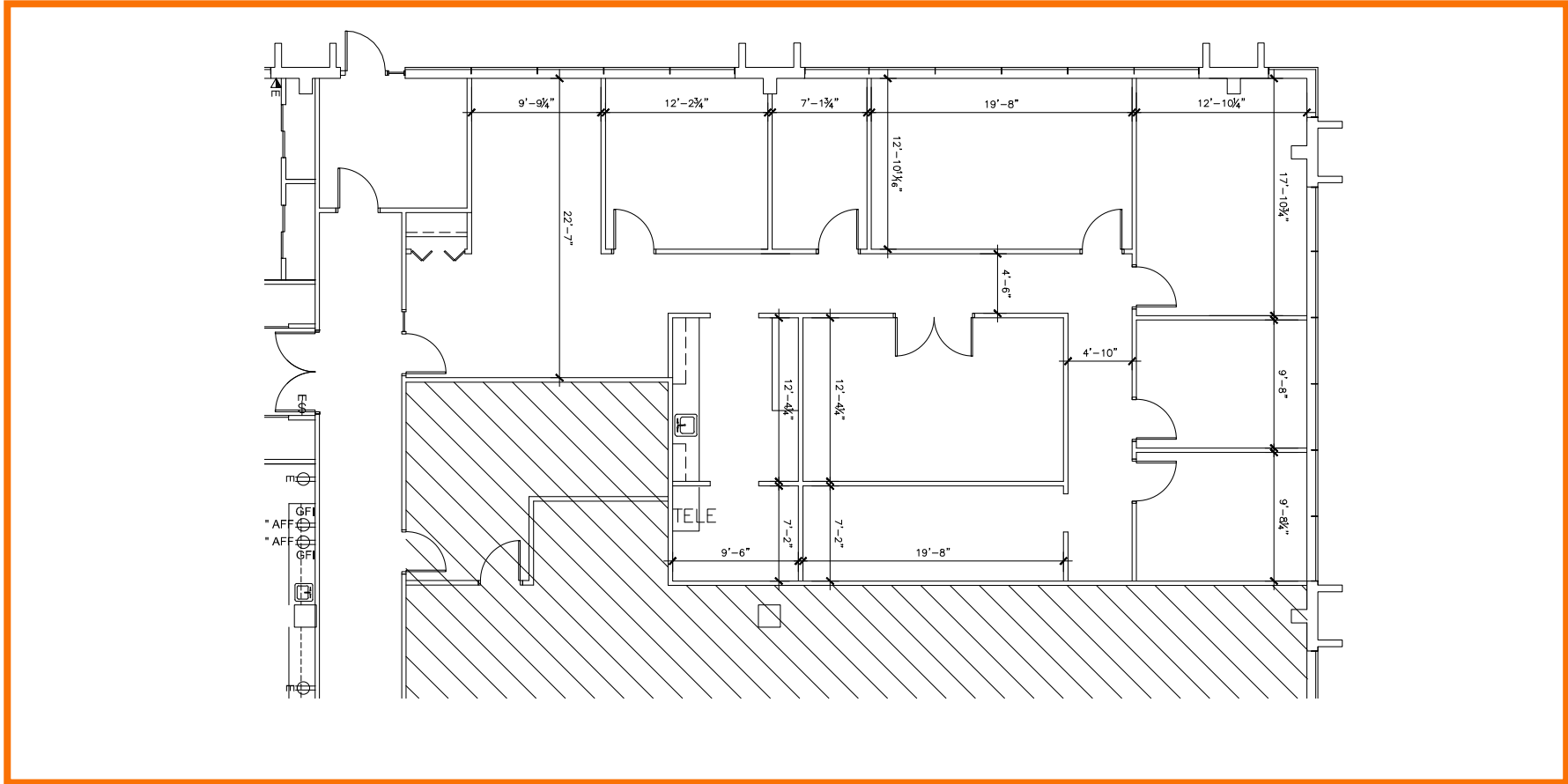
Building Height  
5 Stories

Typical Floor Size  
29,688

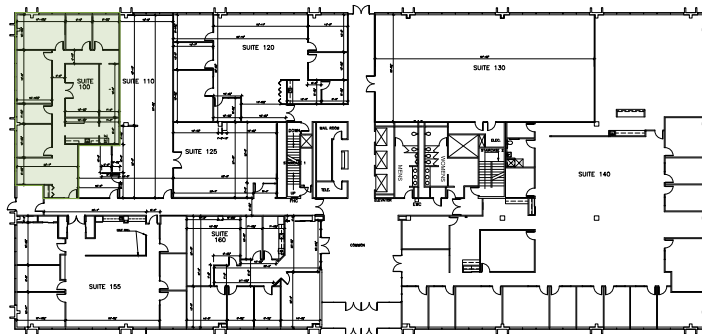
Parking  
427 Spaces

# FLOOR PLANS First Floor

1111 East Touhy



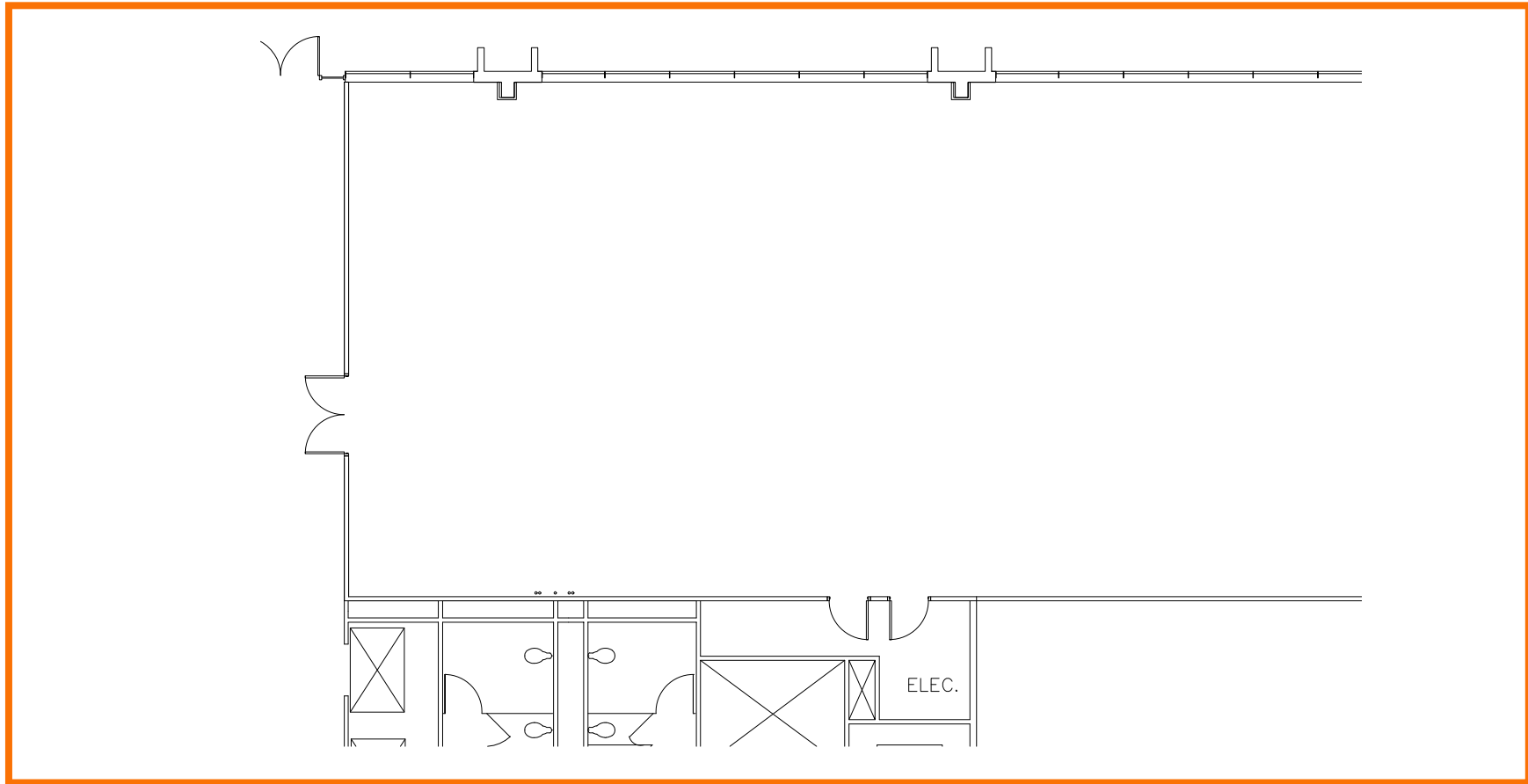
Suite 100 | SF: 2,817



For information contact:  
**IGNACIO FELLER**  
Commercial Real Estate Director  
(847) 777-9513  
ifeller@ohareoffices.com  
OhareOffices.com

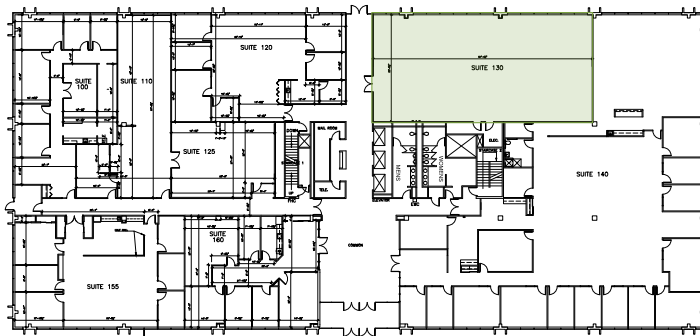
# FLOOR PLANS First Floor

1111 East Touhy



**Suite 130** | SF: 3,848

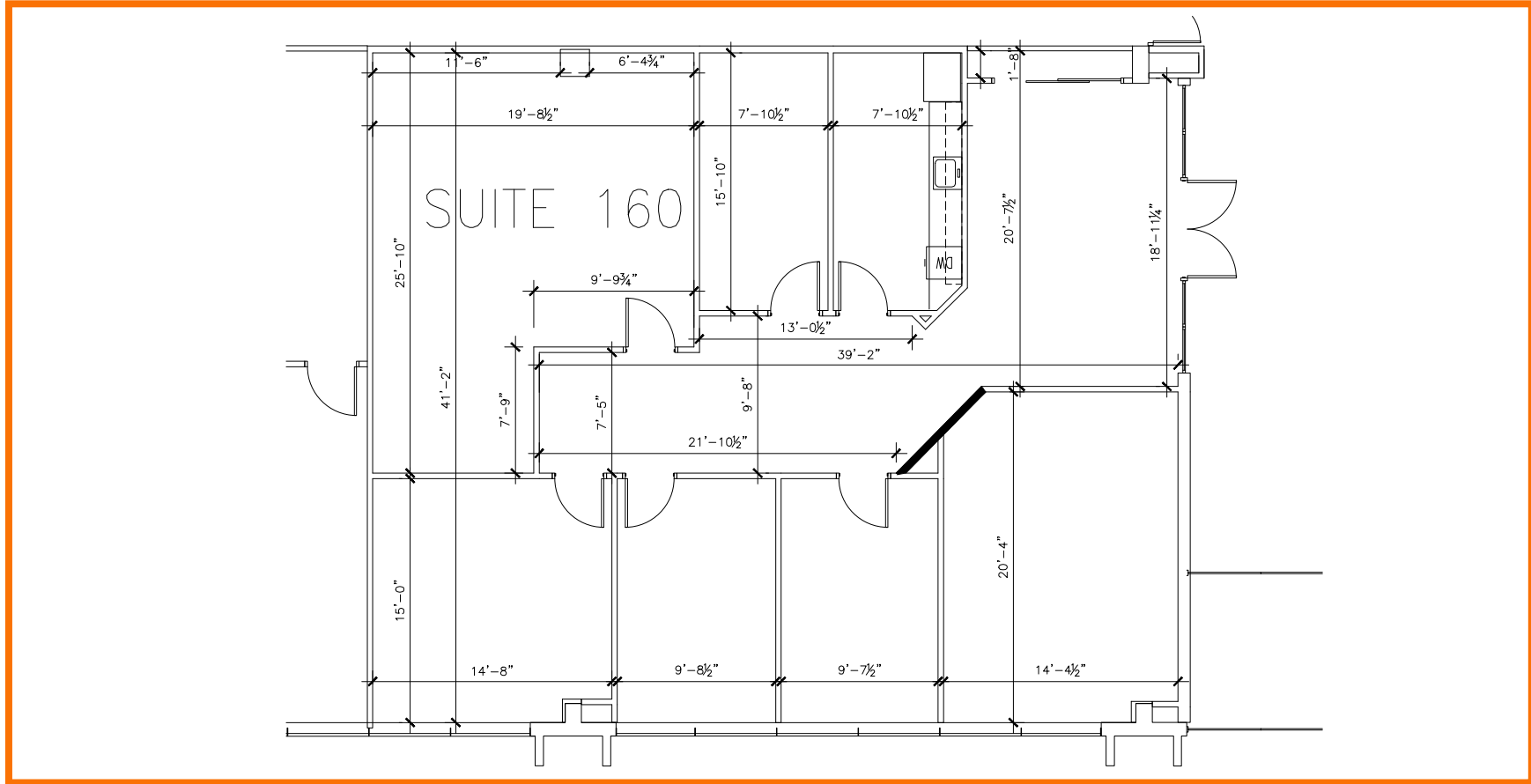
- Built to Suit



**For information contact:**  
**IGNACIO FELLER**  
Commercial Real Estate Director  
(847) 777-9513  
ifeller@ohareoffices.com  
OhareOffices.com

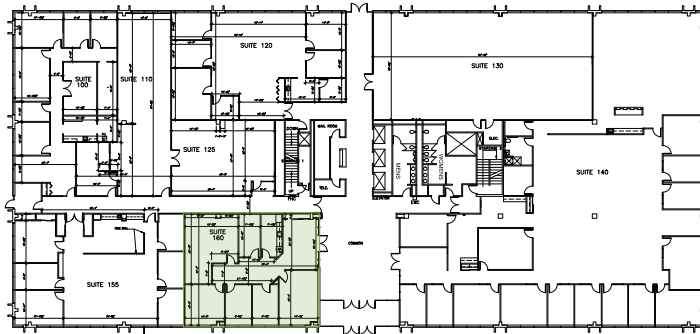
# FLOOR PLANS First Floor

1111 East Touhy



## Suite 160 | SF: 2,420

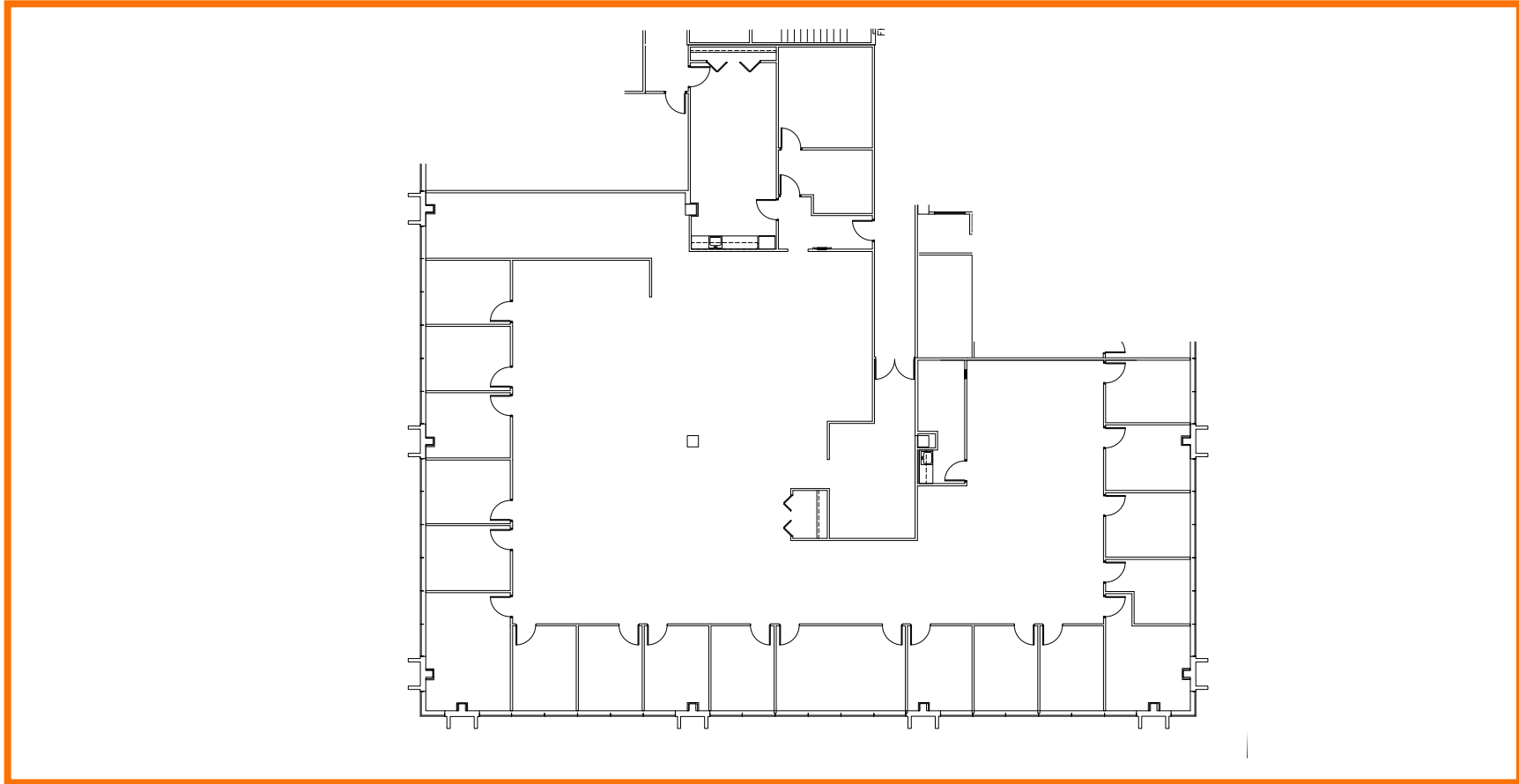
- Fully built-out standard office layout with brand new carpet, fresh paint, and upgraded LED lighting
- Glass-front entry with reception directly off the main lobby
- Breakroom/kitchenette



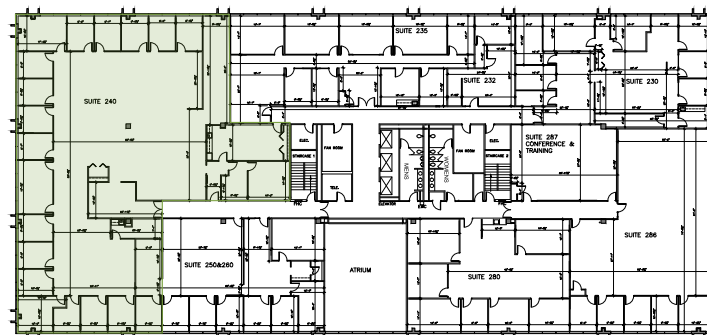
**For information contact:**  
**IGNACIO FELLER**  
Commercial Real Estate Director  
(847) 777-9513  
ifeller@ohareoffices.com  
OhareOffices.com

# FLOOR PLANS Second Floor

1111 East Touhy



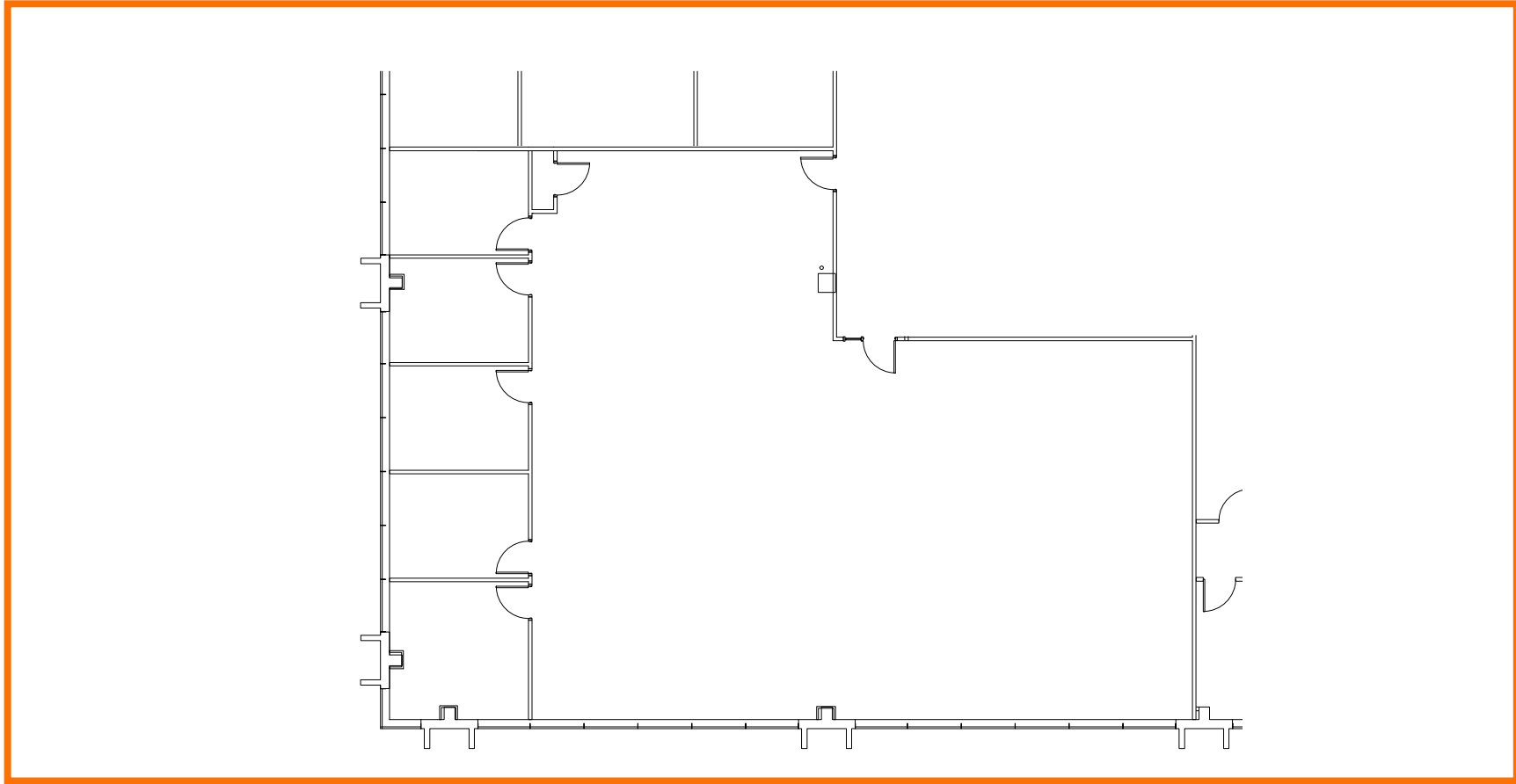
**Suite 240** | SF: 9,671



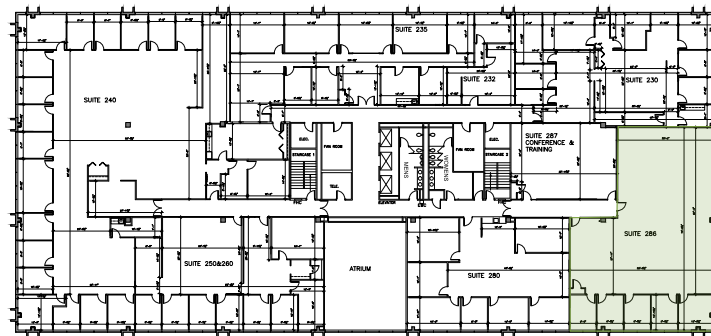
**For information contact:**  
**IGNACIO FELLER**  
Commercial Real Estate Director  
(847) 777-9513  
ifeller@ohareoffices.com  
OhareOffices.com

# FLOOR PLANS Second Floor

1111 East Touhy



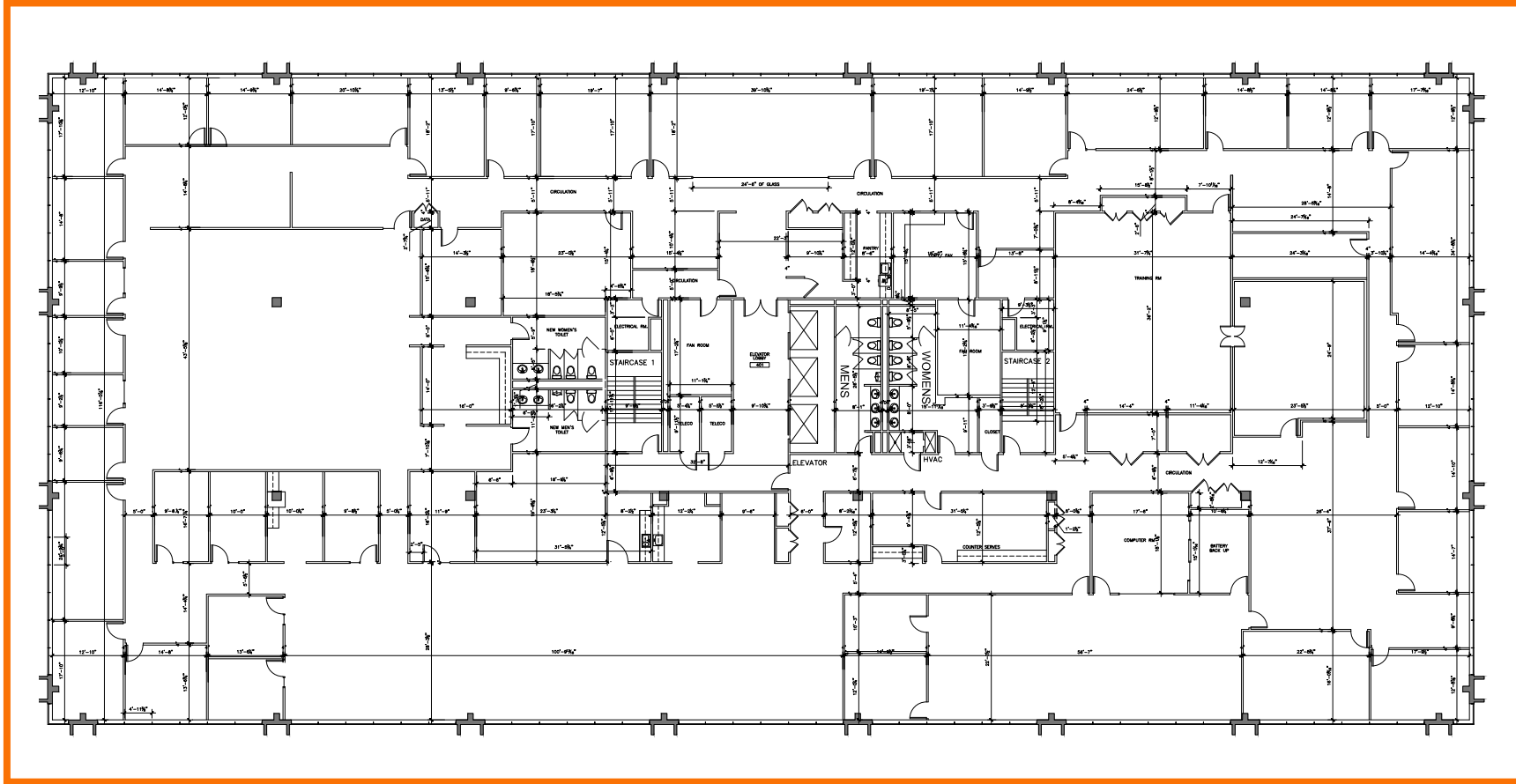
**Suite 286** | SF: 4,021



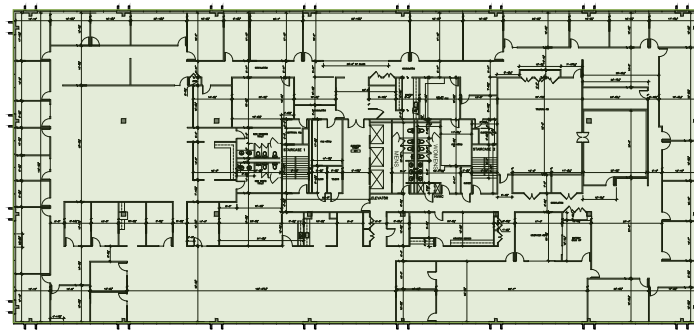
**For information contact:**  
**IGNACIO FELLER**  
Commercial Real Estate Director  
(847) 777-9513  
ifeller@ohareoffices.com  
OhareOffices.com

# FLOOR PLANS Fourth Floor

1111 East Touhy



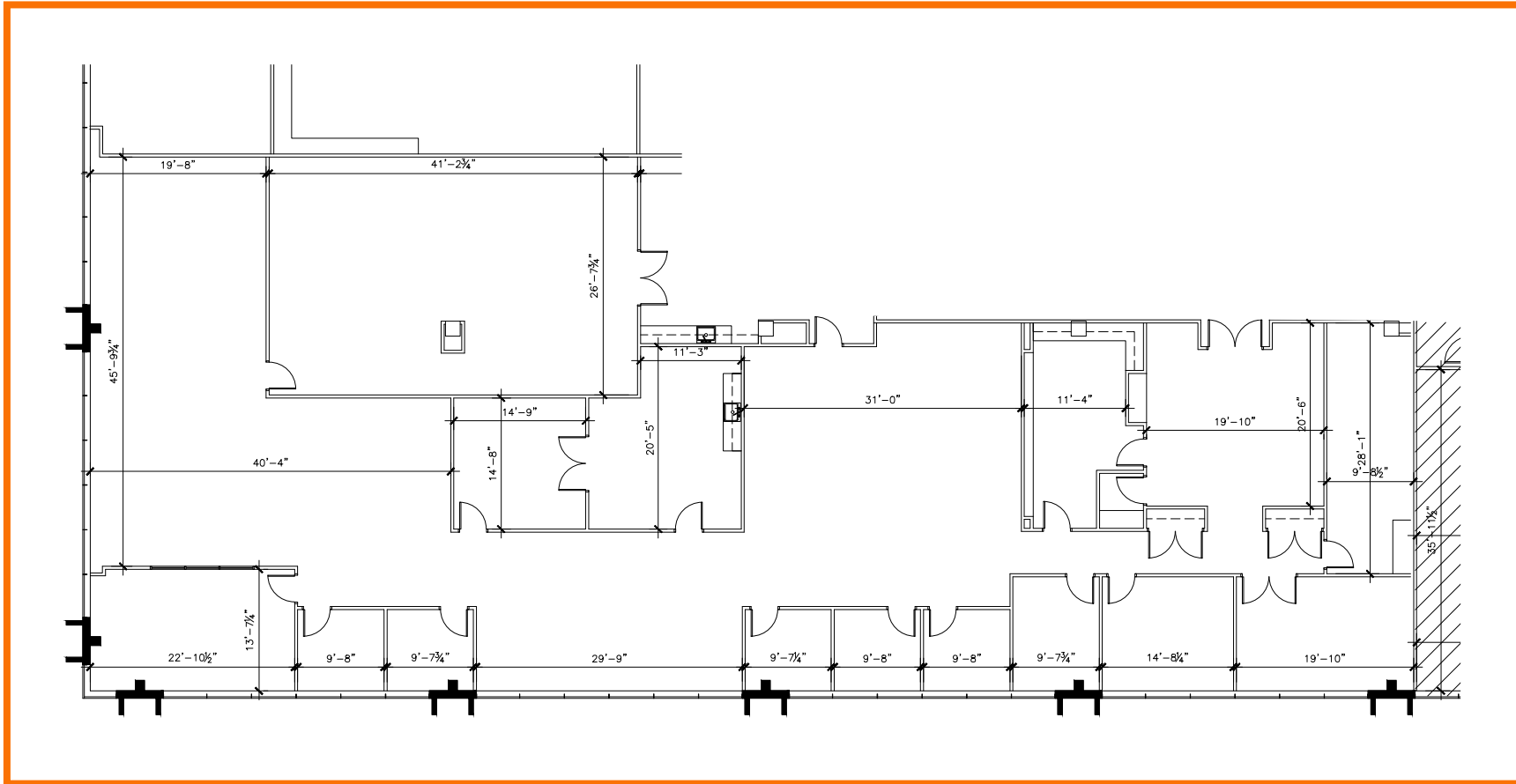
**Suite 400** | SF: 31,837  
Entire Floor



**For information contact:**  
**IGNACIO FELLER**  
Commercial Real Estate Director  
(847) 777-9513  
ifeller@ohareoffices.com  
OhareOffices.com

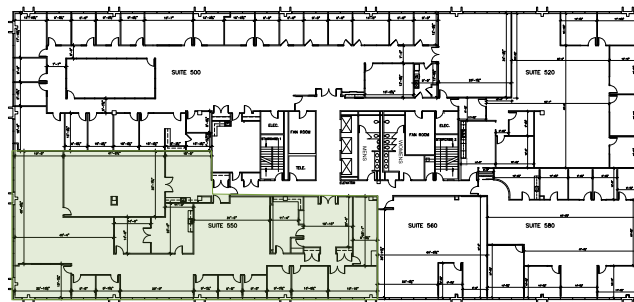
# FLOOR PLANS Fifth Floor

1111 East Touhy



## Suite 550 | SF: 9,136

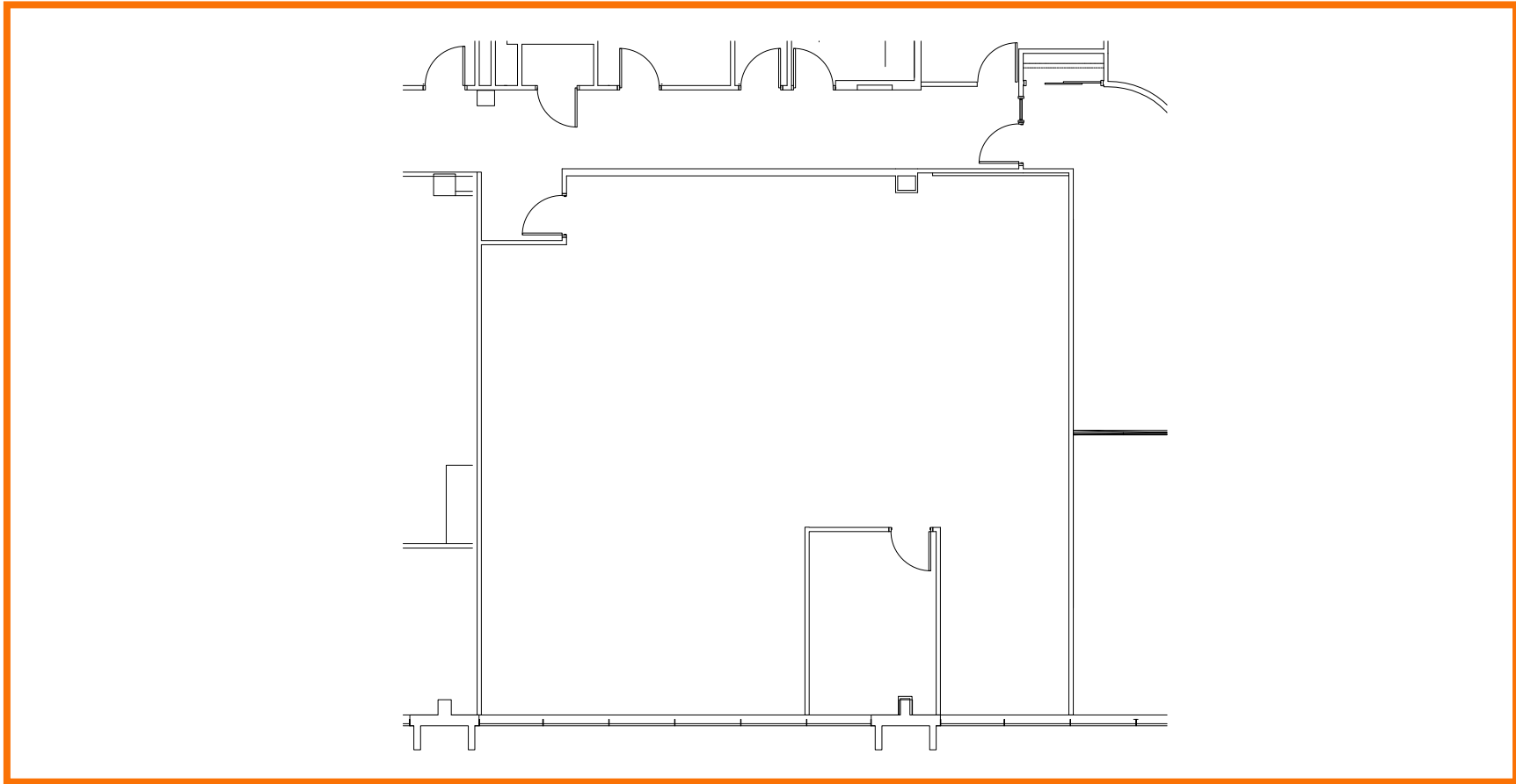
- Fully built-out standard office layout



**For information contact:**  
**IGNACIO FELLER**  
Commercial Real Estate Director  
(847) 777-9513  
ifeller@ohareoffices.com  
OhareOffices.com

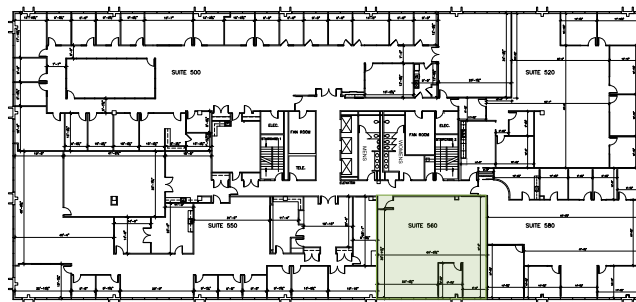
# FLOOR PLANS Fifth Floor

1111 East Touhy



## Suite 560 | SF: 2,210

- Second-generation office space with existing layout



**For information contact:**  
**IGNACIO FELLER**  
Commercial Real Estate Director  
(847) 777-9513  
ifeller@ohareoffices.com  
OhareOffices.com