



**FOR LEASE**

**2,670 - 5,813 SF OF  
PRIME OFFICE SPACE AT  
THE DOLE CANNERY**

**650 IWILEI RD  
HONOLULU, HI 96817**



**Vanessa Kop (B)**  
RB-20654  
808-256-0370  
vkop@cbi-hawaii.com

**Brant M. Yasaka (S)**  
RS-68051  
808-271-4697  
byasaka@cbi-hawaii.com

**Taryn Taylor (S)**  
RB-85465  
808-282-4583  
ttaylor@cbi-hawaii.com

**NAI CBI Hawaii**

1712 S. King Street Suite 201  
Honolulu, HI 96826  
808.942.7100 | www.cbi-hawaii.com





# 650 IWILEI ROAD

## PROPERTY DESCRIPTION

- Affordable sublease and demiseable Space Available From Current Tenant
- Space features multiple private offices, conference room, and two open areas for training or cubicles.
- Centralized location near the Iwilei Costco and Honolulu Central Business District.
- Common Restrooms On Same Floor
- Secure Access
- Possibility For Shared Kitchen Use Available
- Ample parking Available

## INVESTMENT SUMMARY

TMK:	1-1-5-012-010-0000
Space:	Suite 415
Size:	2,670 SF - 5,813 SF
Area:	Central Business District   Honolulu
Base Rent:	\$1.20 per SF/mo.
CAM:	\$1.54 per SF/mo.
	Includes electricity, water, AC
Terms:	4 Years



**Vanessa Kop (B)**  
 RB-20654  
 808-256-0370  
 vkop@cbi-hawaii.com

**Brant M. Yasaka (S)**  
 RS-68051  
 808-271-4697  
 byasaka@cbi-hawaii.com

**Taryn Taylor (S)**  
 RB-85465  
 808-282-4583  
 ttaylor@cbi-hawaii.com

**NAI CBI Hawaii**

1712 S. King Street Suite 201  
 Honolulu, HI 96826  
 808.942.7100 | www.cbi-hawaii.com





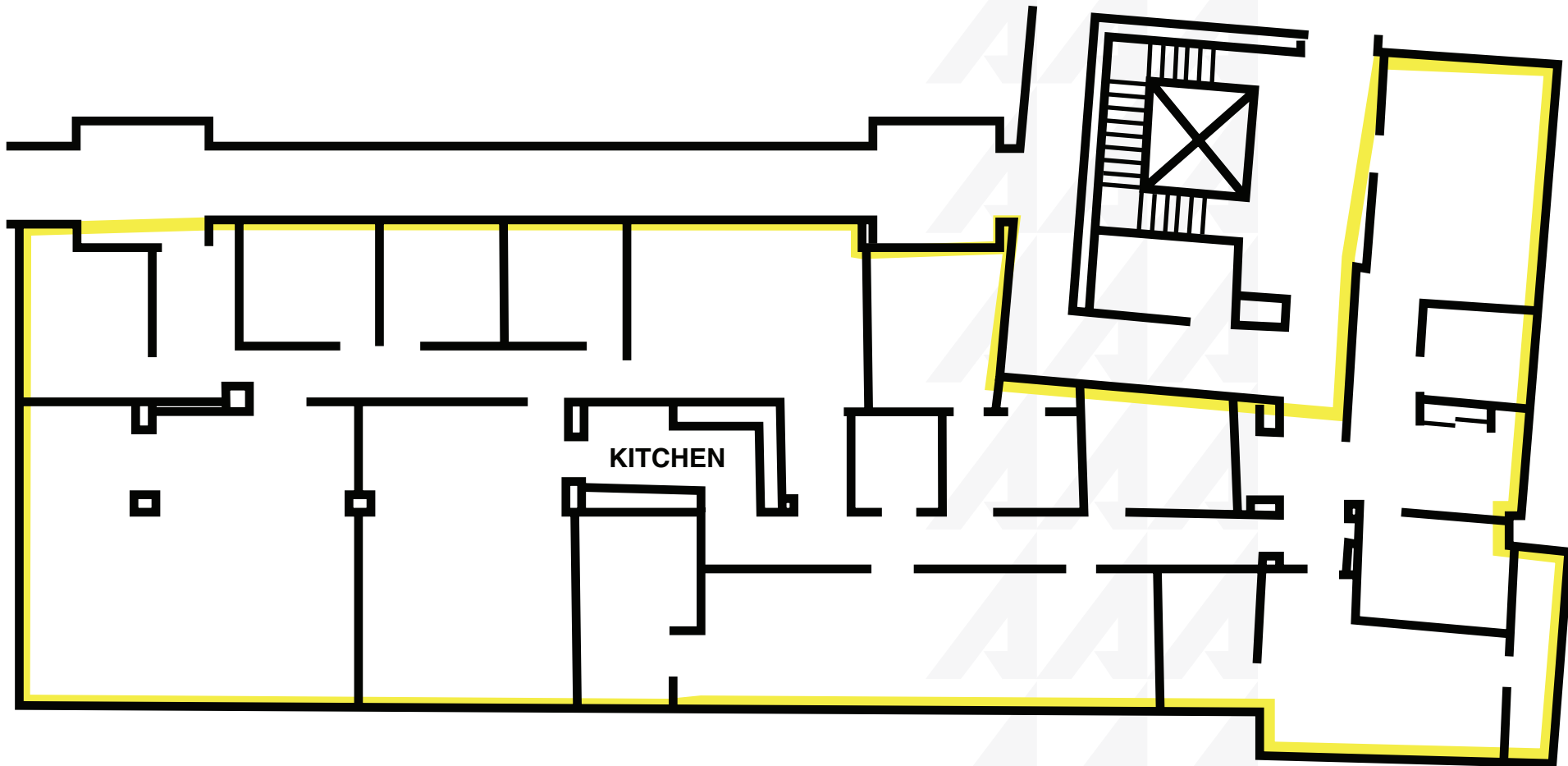
**Vanessa Kop (B)**  
RB-20654  
808-256-0370  
vkop@cbi-hawaii.com

**Brant M. Yasaka (S)**  
RS-68051  
808-271-4697  
byasaka@cbi-hawaii.com

**Taryn Taylor (S)**  
RB-85465  
808-282-4583  
ttaylor@cbi-hawaii.com

**NAI CBI Hawaii**  
1712 S. King Street Suite 201  
Honolulu, HI 96826  
808.942.7100 | www.cbi-hawaii.com





**Vanessa Kop (B)**  
RB-20654  
808-256-0370  
vkop@cbi-hawaii.com

**Brant M. Yasaka (S)**  
RS-68051  
808-271-4697  
byasaka@cbi-hawaii.com

**Taryn Taylor (S)**  
RB-85465  
808-282-4583  
ttaylor@cbi-hawaii.com

**NAI CBI Hawaii**  
1712 S. King Street Suite 201  
Honolulu, HI 96826  
808.942.7100 | www.cbi-hawaii.com





**Vanessa Kop (B)**  
RB-20654  
808-256-0370  
vkop@cbi-hawaii.com

**Brant M. Yasaka (S)**  
RS-68051  
808-271-4697  
byasaka@cbi-hawaii.com

**Taryn Taylor (S)**  
RB-85465  
808-282-4583  
ttaylor@cbi-hawaii.com

**NAI CBI Hawaii**  
1712 S. King Street Suite 201  
Honolulu, HI 96826  
808.942.7100 | www.cbi-hawaii.com

