

FOR SALE

565 SW Tamarack Ct., Redmond, OR, 97756

Industrial Owner/User or Investment Opportunity

Price Reduction!!
Now \$2,150,000
was \$2,370,000!



6,930 SF | \$2,150,000 | Prime Commercial Industrial Location

Now offered at \$2,150,000!! Exceptional opportunity on this 6,930 SF custom flex industrial building presents a rare opportunity to acquire a turn-key headquarters facility in Redmond's thriving Airport Business Park. Situated in a premier industrial corridor with excellent access to Highway 97 and just minutes from Redmond Municipal Airport, the property offers outstanding connectivity and is only 20 minutes from Bend. Constructed in 2022 with high-end finishes throughout, the building features a versatile layout including showroom space, private offices, warehouse area, and a fully built-out second story with kitchen, bathroom, and staff break room. Designed to impress clients while supporting efficient operations, this exceptional property is ideally suited for a contractor, distributor, design/build firm, or any business seeking a modern facility to showcase their products and elevate their brand.

Dinah Green, Principal Broker
Dinah@GreenTreeCRE.Com
503-689-4498



COMMERCIAL
REAL ESTATE

FOR SALE

565 SW Tamarack Ct.
Redmond, OR, 97756

\$2,150,000

PROPERTY HIGHLIGHTS:

- Built with high-quality finishes and custom features throughout
- Showroom space designed to impress clients and showcase products
- Two private offices, open workspace that accommodates an additional 10-15 employee workstations and conference room
- Warehouse space with functional operational layout
- Second-story staff level with full kitchen, bathroom, and break room
- Ideal for contractors, design-build firms, distributors, or showroom users
- Excellent headquarters-style building for a growing business
- Located near Redmond Municipal Airport
- Easy access to Hwy 97 & commute to Bend or Prineville
- Surrounded by newer professional industrial development
- Zoning: M1 Light Industrial allows for a variety of uses including contractor services, veterinarian and kennel uses, commercial manufacturing, distribution center, auto detailing, cafe or bakery. **See City of Redmond Permitted Uses. Buyer to do their own due diligence.**



Dinah Green, Principal Broker
Dinah@GreenTreeCRE.Com
503-689-4498



COMMERCIAL
REAL ESTATE

FOR SALE

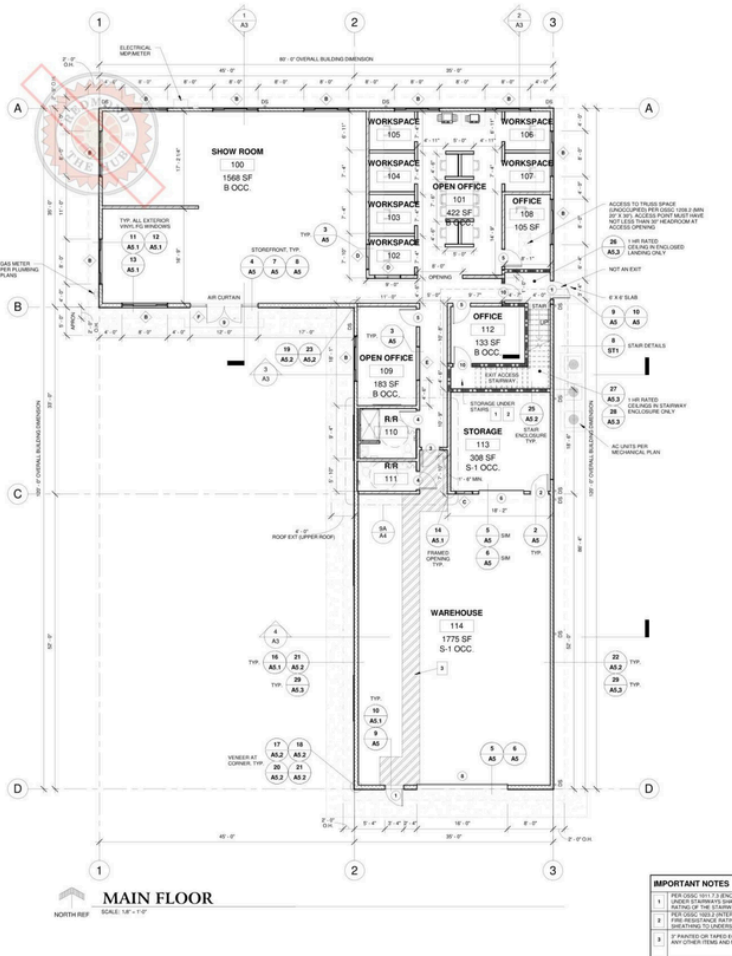
\$2,150,000

565 SW Tamarack Ct.
Redmond, OR, 97756

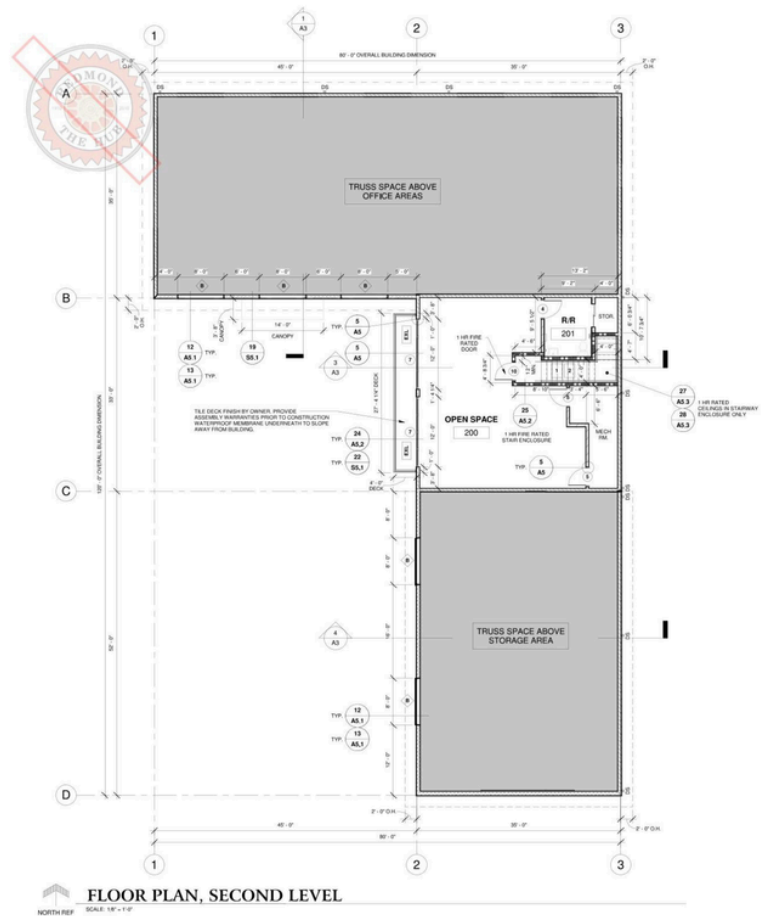
BUILDING FLOORPLAN:

- Showroom: 1,568 SF
- Warehouse: 1,775 SF
- Office: 843 SF
- Second level: 1,155 SF

First Floor:



Second Level:



Dinah Green, Principal Broker
Dinah@GreenTreeCRE.Com
503-689-4498



COMMERCIAL
REAL ESTATE

FOR SALE

\$2,150,000

565 SW Tamarack Ct.
Redmond, OR, 97756

ABOUT REDMOND, OR:

Redmond is one of Central Oregon's fastest-growing communities and a thriving hub for business, industry, and recreation. Strategically located along the Highway 97 corridor, Redmond provides excellent regional access throughout Central Oregon and is home to the Redmond Municipal Airport (RDM)—the region's primary commercial airport serving Bend, Redmond, and surrounding communities. With its pro-business environment, expanding industrial and commercial base, and close proximity to Bend (just 20 minutes away), Redmond has become an increasingly attractive location for companies seeking affordability, accessibility, and room to grow. The city continues to experience strong population and economic growth, making it an ideal place for businesses to establish or expand their Central Oregon presence.

With its strategic Highway 97 access, regional airport, and pro-business environment, Redmond continues to solidify its position as Central Oregon's leading hub for industrial and commercial growth.



Dinah Green, Principal Broker
Dinah@GreenTreeCRE.Com
503-689-4498



COMMERCIAL
REAL ESTATE

FOR SALE

\$2,150,000

565 SW Tamarack Ct.
Redmond, OR, 97756



**Lot lines are Approximate



Dinah Green, Principal Broker
Dinah@GreenTreeCRE.Com
503-689-4498

BROKERS ARE LICENSED IN THE STATE OF OREGON. THIS INFORMATION HAS BEEN FURNISHED FROM SOURCES WE DEEM RELIABLE, BUT FOR WHICH WE ASSUME NO LIABILITY. THIS IS AN EXCLUSIVE LISTING. THE INFORMATION CONTAINED HEREIN IS GIVEN IN CONFIDENCE WITH THE UNDERSTANDING THAT ALL NEGOTIATIONS PERTAINING TO THIS PROPERTY BE HANDLED THROUGH THE LISTING BROKERS. ALL MEASUREMENTS ARE APPROXIMATE.



COMMERCIAL
REAL ESTATE