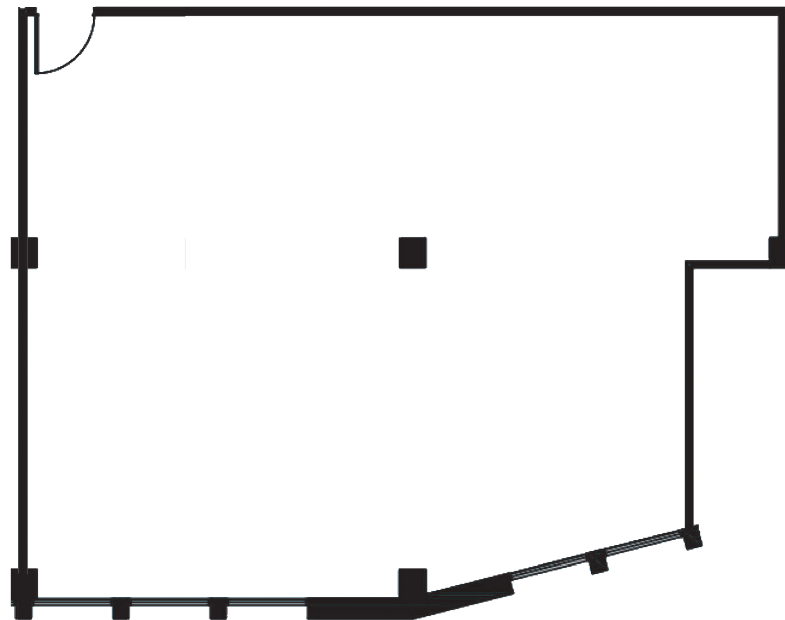
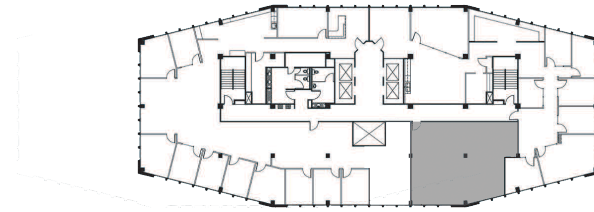
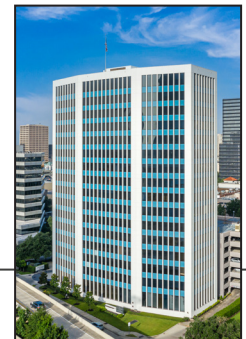


FOR LEASE | OFFICE | 2100 WEST LOOP SOUTH



**F14** SUITE 1415  
1,438 Square Feet



BILL MCGRATH, CCIM  
281.598.9860  
bmcgrath@landparkco.com

MATT EASTERLING  
713.325.4112  
measterling@landparkco.com

JACOB SUMMERS  
832.790.4200  
jsummers@landparkco.com

2550 Gray Falls Drive, Suite 400 | Houston, TX 77077  
713-789-2200 | LandParkCo.com

The information contained herein is believed to be correct. However, no warranty or representation is made. All prices are subject to change without notice and property is subject to prior lease, sale or withdrawal from the market without notice.