

18705 LAKE DR. E
CHANHASSEN / MINNESOTA



Dell Five H

**11,370 SF Office
For Lease**



Property Overview

10 Building Business Park Totaling 620,000 SF

Dell Five is a prominent business park situated in the Southwest submarket in Chanhassen, MN. The park spans 60 acres and comprises 10 buildings, offering a total of 620,000 square feet of high-quality flexible space. The location provides significant frontage on Highway 5 and convenient access to Highways 212 and I-494.



***11,370 SF of
office space with
easy access to
Highway 212 and
Highway 5.***

Building Specifications

Address 18705 Lake Drive East, Chanhassen, MN

Building Total SF 53,838 SF

Clear Height 12' drop ceiling, 18' drop joist

Year Built 1999

Lease Rates Negotiable

2026 Estimated Tax & Cam \$3.43 PSF Tax
\$2.77 PSF CAM
\$6.20 PSF Total



Floor Plan

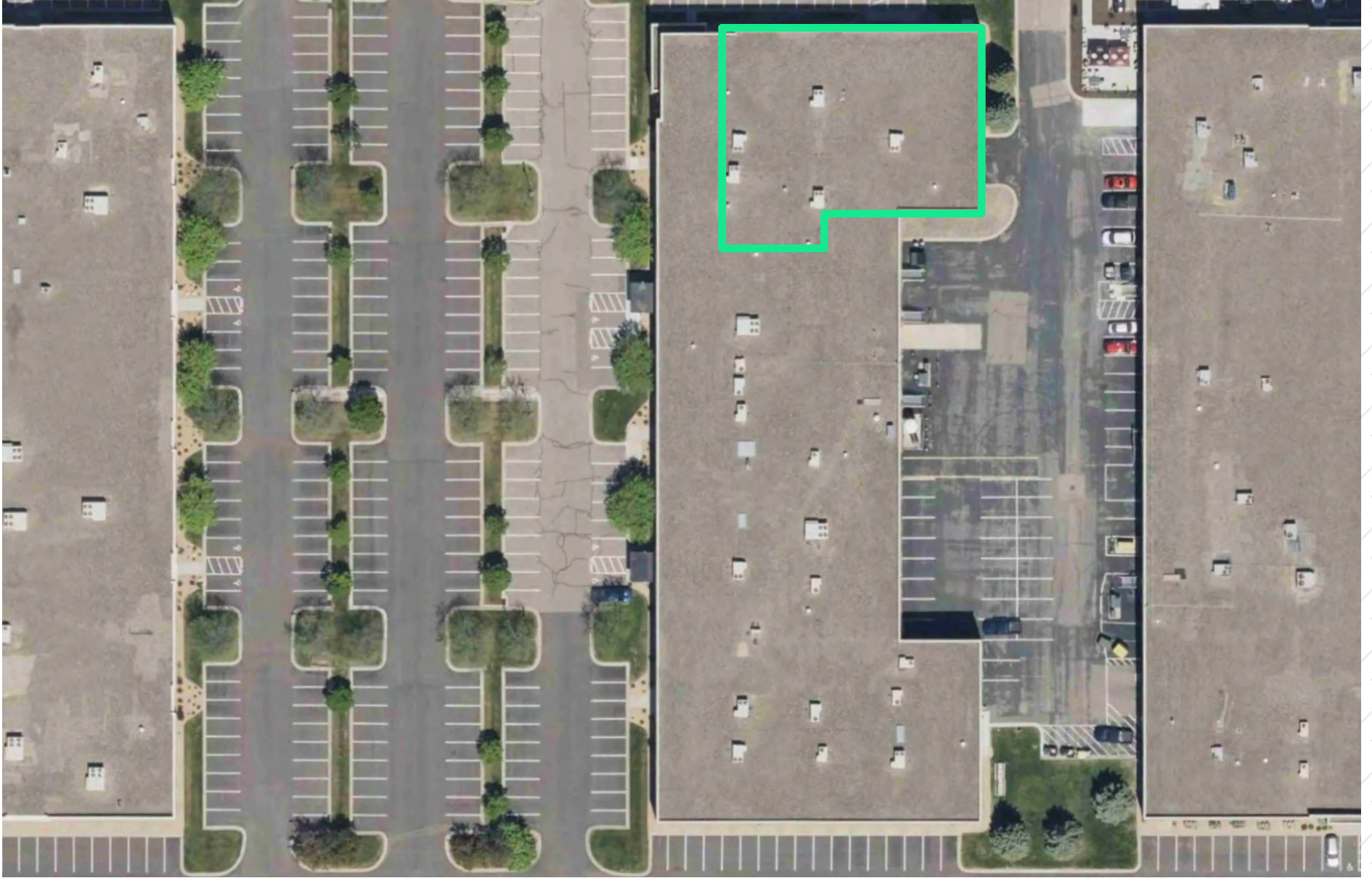
Suite 18705

OFFICE
11,370 SF

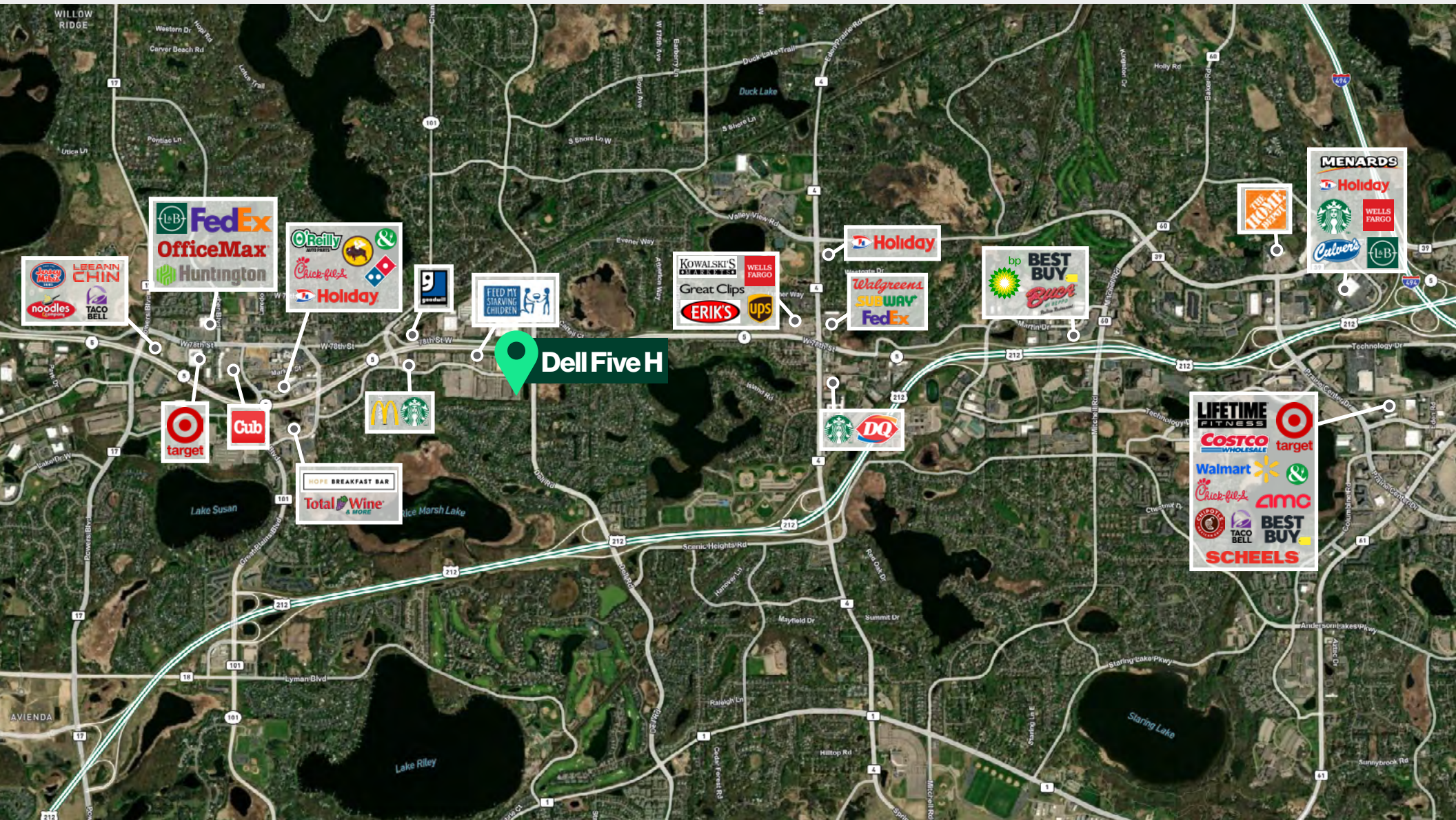
TOTAL
11,370 SF



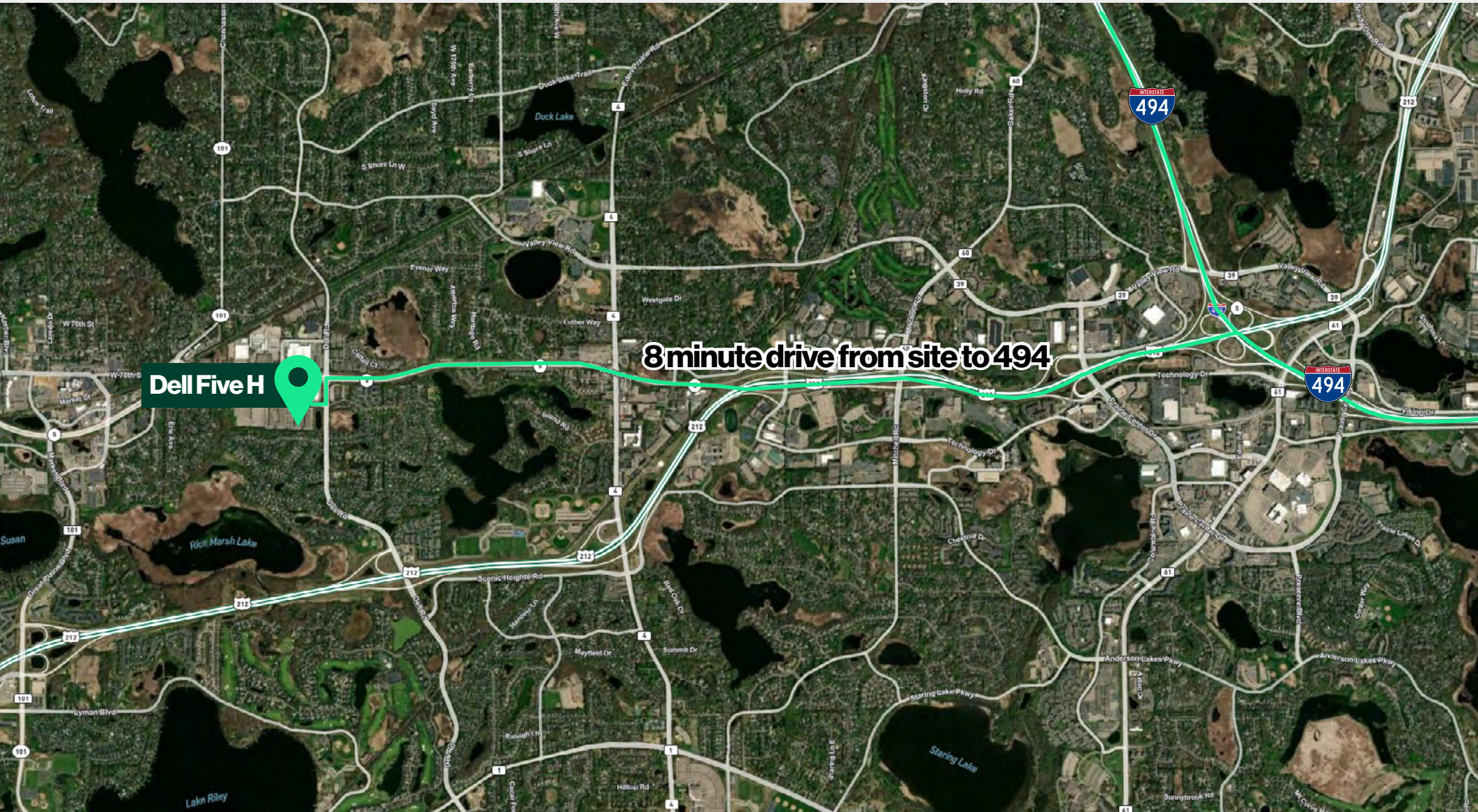
Siteplan



Amenity Map



Drive Time Map





18705 LAKE DR. E
CHANHASSEN / MINNESOTA



Dell Five H

11,370 SF Office For Lease

Tom Bennett
Senior Vice President
+1612 386 6108
tom.bennett@cbre.com

Austin Lovin
First Vice President
+1612 336 4255
austin.lovin@cbre.com

Parker Rickert
Associate
+1612 845 8022
parker.rickert@cbre.com



© 2026 CBRE, Inc. All rights reserved. This information has been obtained from sources believed reliable but has not been verified for accuracy or completeness. CBRE, Inc. makes no guarantee, representation or warranty and accepts no responsibility or liability as to the accuracy, completeness, or reliability of the information contained herein. You should conduct a careful, independent investigation of the property and verify all information. Any reliance on this information is solely at your own risk. CBRE and the CBRE logo are service marks of CBRE, Inc. All other marks displayed on this document are the property of their respective owners, and the use of such marks does not imply any affiliation with or endorsement of CBRE. Photos herein are the property of their respective owners. Use of these images without the express written consent of the owner is prohibited.