



**MARTIN
COMMERCIAL
GROUP**
Commercial Real Estate Services



AVAILABLE FOR LEASE

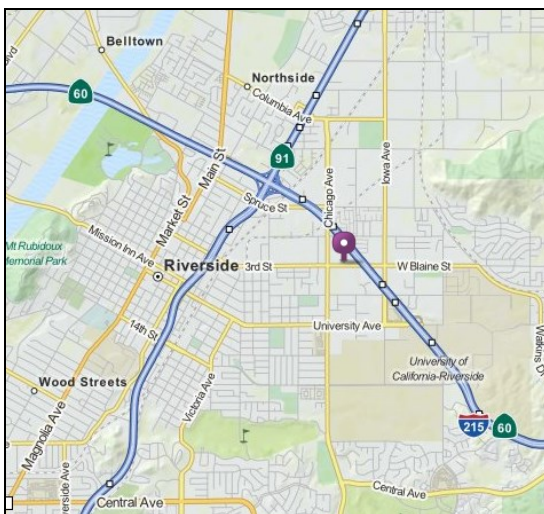
2,809 SQ. FT. MULTI-TENANT INDUSTRIAL UNIT



3285 Trade Center Drive, Riverside

RIVERSIDE TRADE CENTER

- Third Street Frontage
- 1,428 Sq. Ft./Two Story Offices
- 3 Offices + 4 Upstairs Offices
- 1,381 Sq. Ft. Open Warehouse
- 20' Clearance
- 1 Ground Level Loading Door
- Fire Sprinklered
- Ample Parking
- Easy Access to 60/91/215 Fwys



For More Information
Please Contact:

ERIN LAGOMARSINO

elagomarsino
@martincommercialgroup.com
DRE # 00992436

951.684.1251

3363 Chicago Avenue
Riverside, CA 92507

*Since 1953...
Orange County ~ Inland Empire*

The information contained herein has been obtained from sources we deem reliable. While we have no reason to doubt its accuracy, we do not guarantee it.



MARTIN
COMMERCIAL
GROUP

Commercial Real Estate Services



For More Information
Please Contact:

ERIN LAGOMARSINO

elagomarsino

@martincommercialgroup.com
DRE # 00992436

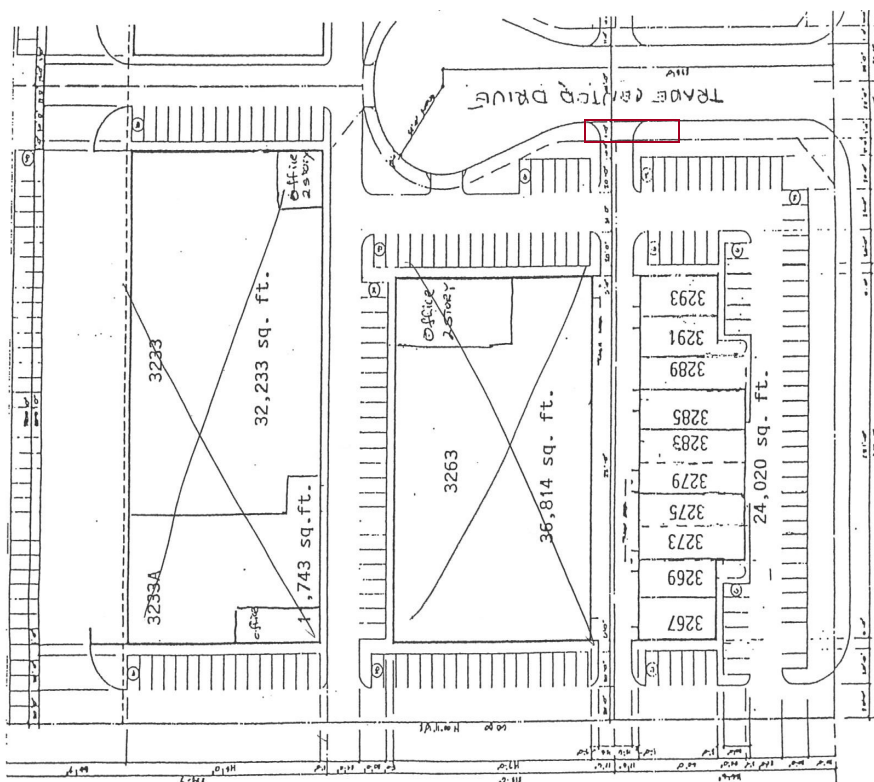
951.684.1251

3363 Chicago Avenue
Riverside, CA 92507

*Since 1953...
~Orange County ~
Inland Empire*

RIVERSIDE TRADE CENTER

SITE PLAN



WWW.MARTINCOMMERCIALGROUP.COM

ORANGE COUNTY: 1495 E. WARNER AVENUE ~ SANTA ANA, CA 92705 714.241.1141 FAX 714.241.0847
INLAND EMPIRE: 3363 CHICAGO AVENUE ~ RIVERSIDE, CA 92705 951.684.1251 FAX 951.684.9041