



For Lease

**\$1.50/SF  
NNN**

**Chris Johnson, SIOR**

Executive Vice President  
+1 503 542 5884  
chris.johnson@colliers.com

**Brett Johnson**

Vice President  
+1 503 499 0067  
brett.johnson@colliers.com

**Colliers**

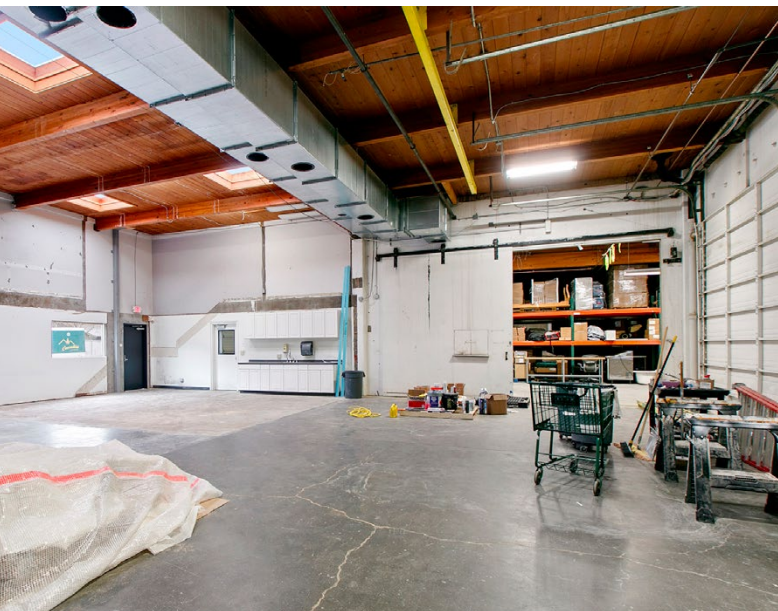
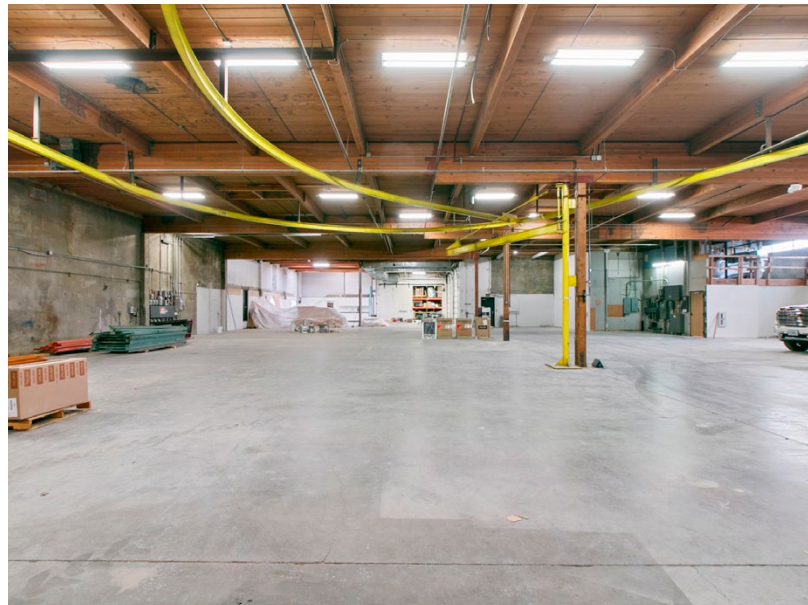
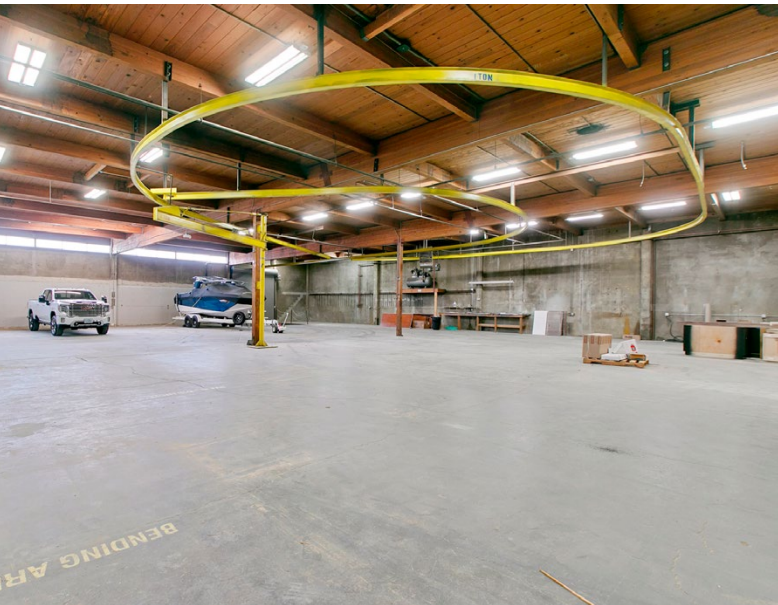
851 SW Sixth Avenue, Suite 1200  
Portland, Oregon 97204  
Main: +1 503 223 3123  
colliers.com

## High-End Warehouse with Yard

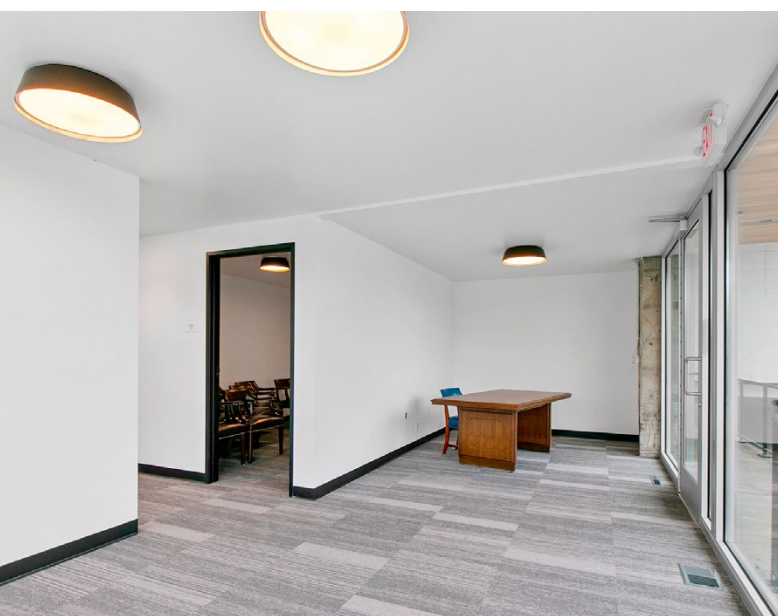
**5805 S Hood Ave, Portland, OR 97239**

- High end warehouse with recent improvements including glass lined exterior (14,643 SF: 13,130 SF warehouse and 1,513 SF office)
- Multiple points of ingress/egress
- Two dock height doors and one grade level door
- Up to 5,000 SF of yard space available at \$0.25/SF
- 5 minutes from CBD
- Available November 1, 2026 (possibly sooner)

# 5805 S Hood Ave

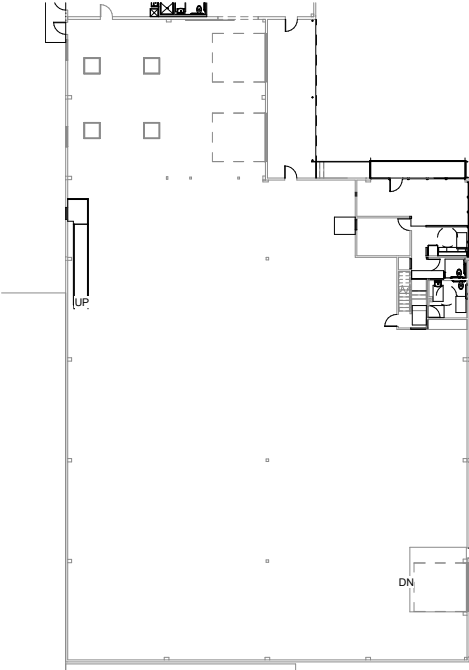


# 5805 S Hood Ave

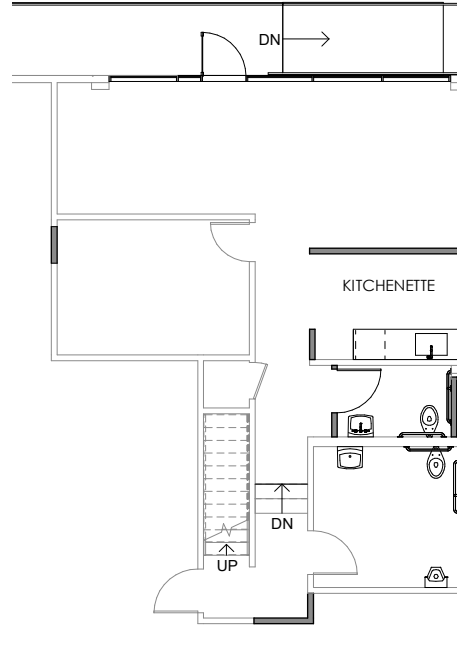


# 5805 S Hood Ave

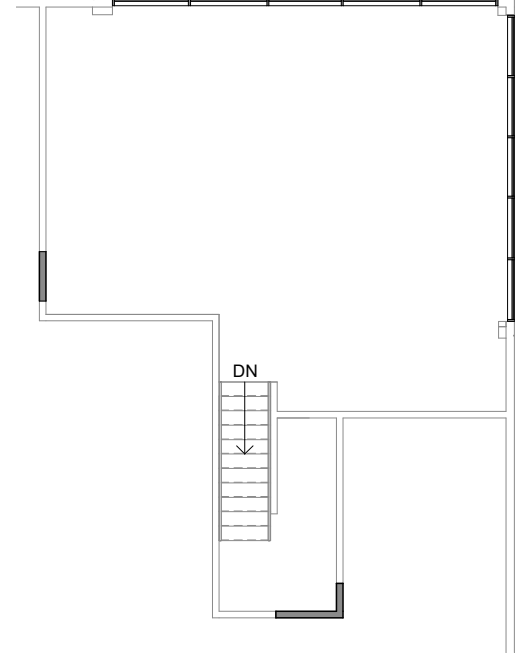
Ground floor warehouse  
13,130 SF



1st floor office  
833 SF



2nd floor office  
680 SF



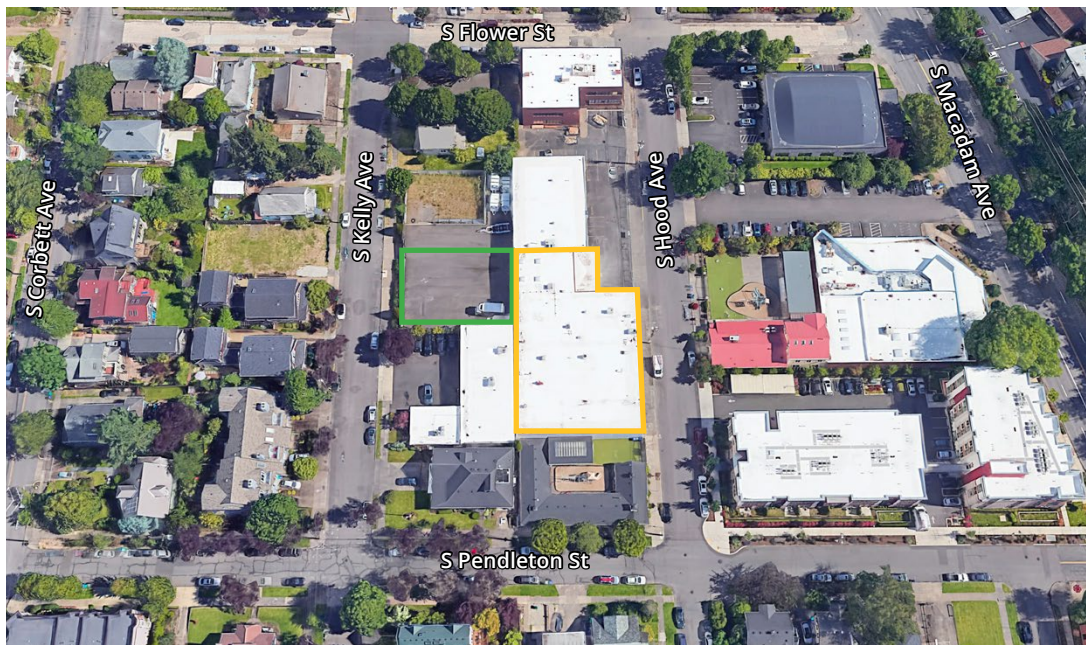
**13,130 + 1,513 + 5,000**

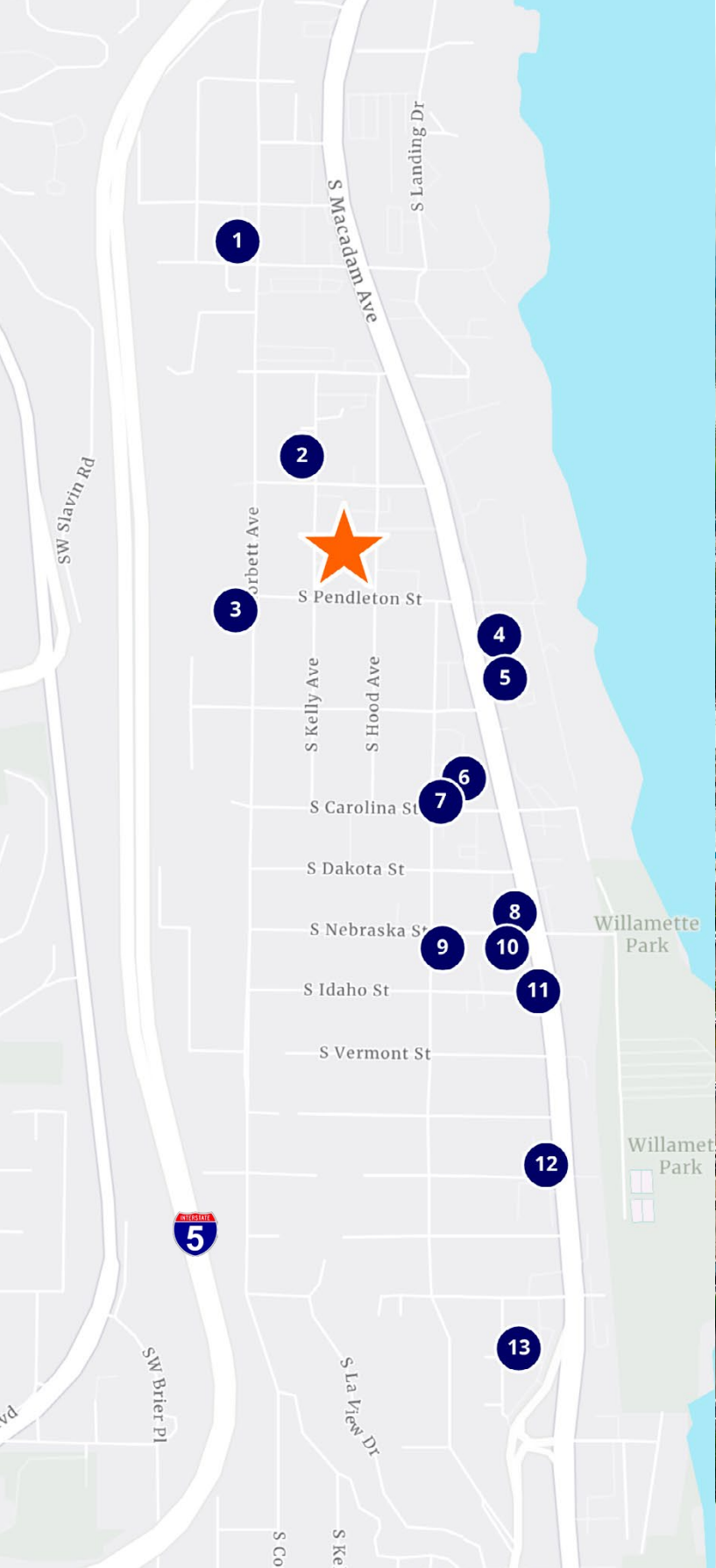
SF Warehouse

SF Office

SF Yard

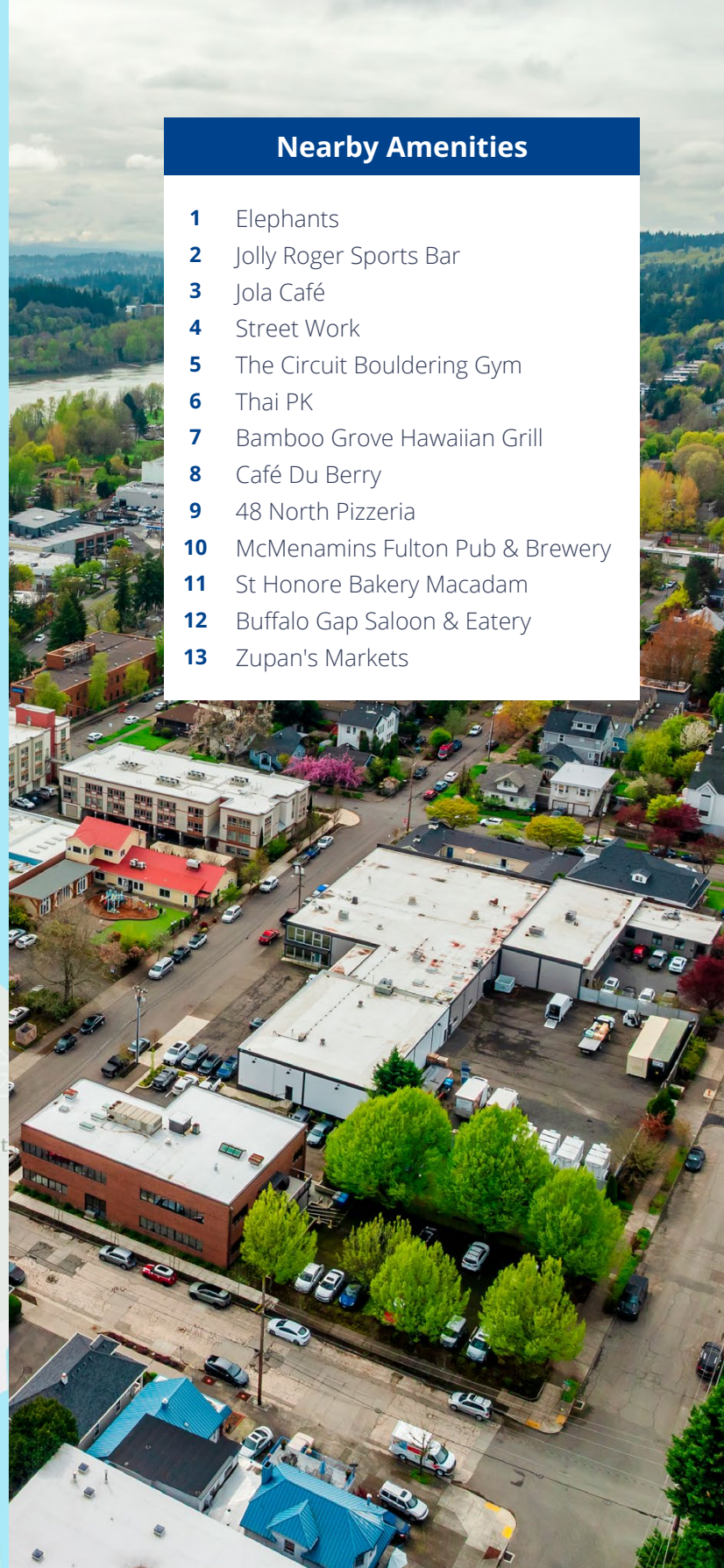
Warehouse Yard





## Nearby Amenities

- 1 Elephants
- 2 Jolly Roger Sports Bar
- 3 Jola Café
- 4 Street Work
- 5 The Circuit Bouldering Gym
- 6 Thai PK
- 7 Bamboo Grove Hawaiian Grill
- 8 Café Du Berry
- 9 48 North Pizzeria
- 10 McMenamins Fulton Pub & Brewery
- 11 St Honore Bakery Macadam
- 12 Buffalo Gap Saloon & Eatery
- 13 Zupan's Markets



Contact us:

**Chris Johnson, SIOR**  
 Executive Vice President  
 +1 503 542 5884  
 chris.johnson@colliers.com

**Brett Johnson**  
 Vice President  
 +1 503 499 0067  
 brett.johnson@colliers.com

