

1940 JEROME AVENUE

BETWEEN EAST TREMONT AVENUE & EAST 177TH STREET | MORRIS HEIGHTS



1940 JEROME AVENUE

BETWEEN EAST TREMONT AVENUE & EAST 177TH STREET | MORRIS HEIGHTS

PROPERTY HIGHLIGHTS

- New development
- Divisions possible
- Great for: retail, medical, school, fitness
- Situated at the base of 115-unit residential building
- High foot traffic area in dense residential neighborhood

SIZE: 8,608 SF Ground Floor
1,003 SF Cellar

FRONTAGE: 105'

CEILING HEIGHT: 13' - 14' 5"

POSSESSION: Spring 2026

ASKING RENT: Upon Request

TRANSPORTATION: 4 B D



1940 JEROME AVENUE

BETWEEN EAST TREMONT AVENUE & EAST 177TH STREET | MORRIS HEIGHTS



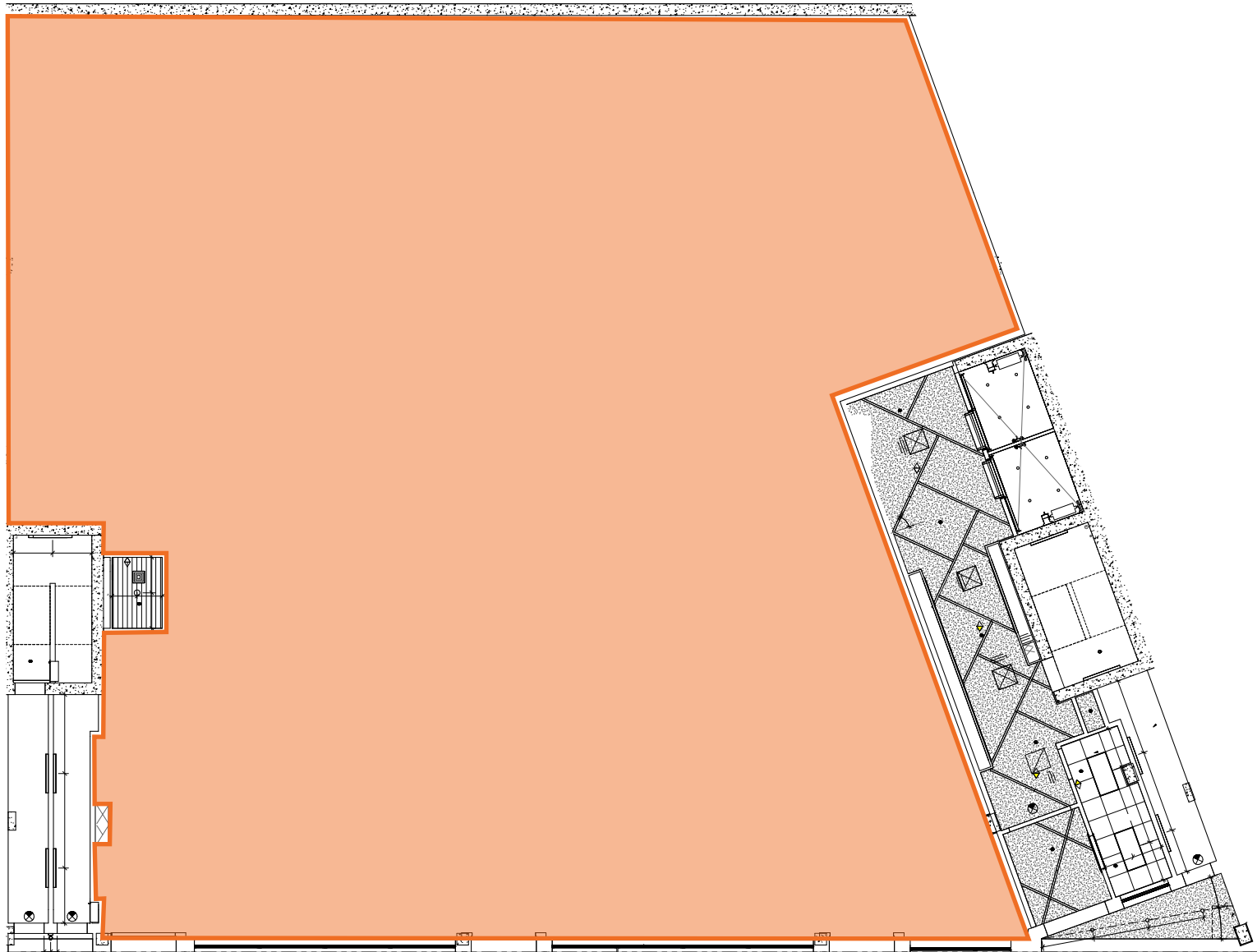
All information supplied in this marketing presentation and/or flyer is from sources deemed reliable and is furnished subject to errors, omissions, modifications, removal of listings from sale/lease and to any listing condition. Any square footage, dimensions, floor plans and/or technical data set forth are approximations and are subject to further elaboration/confirmation.

1940 JEROME AVENUE

BETWEEN EAST TREMONT AVENUE & EAST 177TH STREET | MORRIS HEIGHTS

FLOOR PLANS:

GROUND FLOOR - 8,608 SF

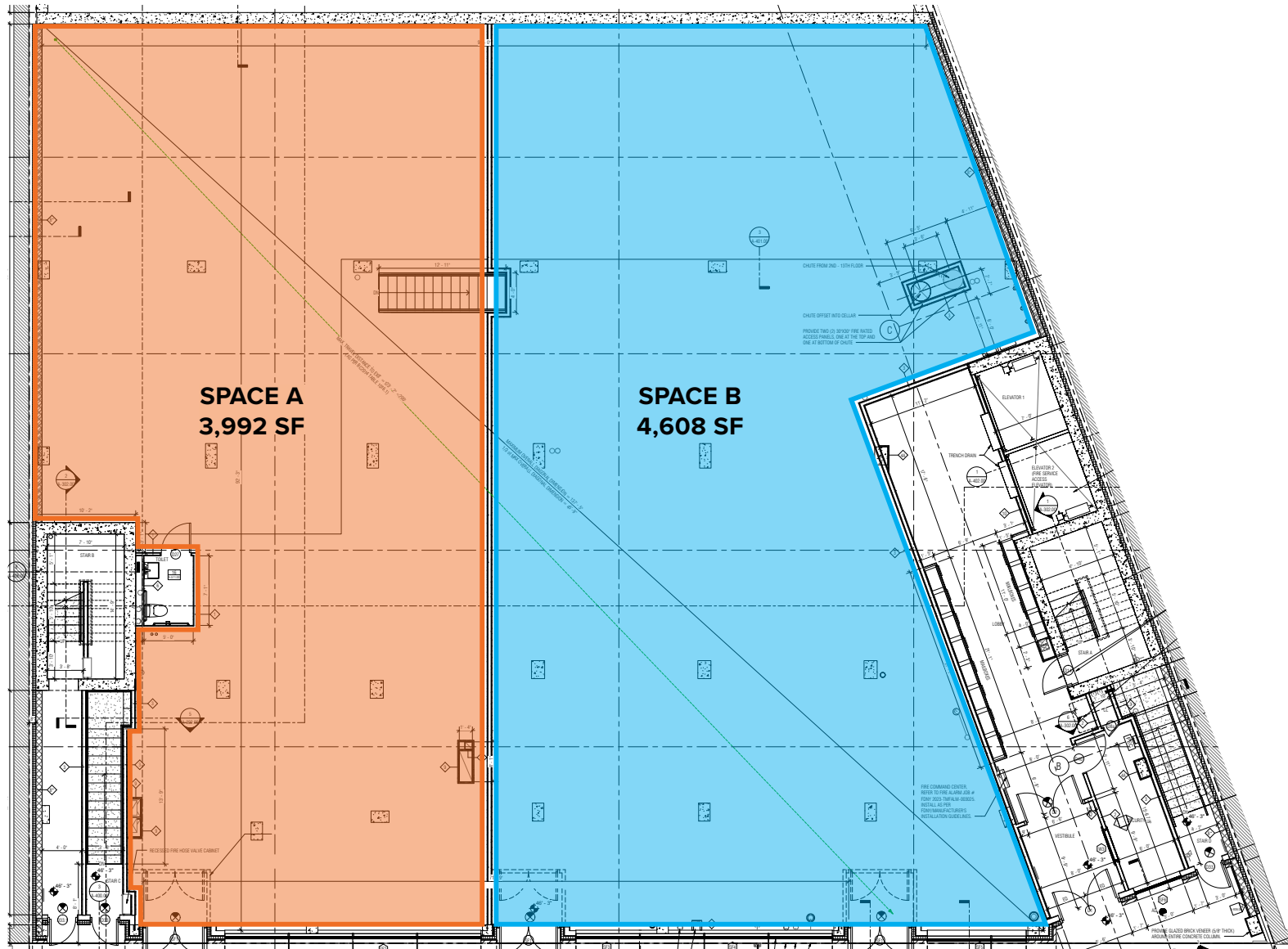


All information supplied in this marketing presentation and/or flyer is from sources deemed reliable and is furnished subject to errors, omissions, modifications, removal of listings from sale/lease and to any listing condition. Any square footage, dimensions, floor plans and/or technical data set forth are approximations and are subject to further elaboration/confirmation.

1940 JEROME AVENUE

BETWEEN EAST TREMONT AVENUE & EAST 177TH STREET | MORRIS HEIGHTS

FLOOR PLANS:
GROUND FLOOR - POTENTIAL DIVISIONS



All information supplied in this marketing presentation and/or flyer is from sources deemed reliable and is furnished subject to errors, omissions, modifications, removal of listings from sale/lease and to any listing condition. Any square footage, dimensions, floor plans and/or technical data set forth are approximations and are subject to further elaboration/confirmation.

1940 JEROME AVENUE

BETWEEN EAST TREMONT AVENUE & EAST 177TH STREET | MORRIS HEIGHTS

FOR MORE INFORMATION,
PLEASE CONTACT:

ELI YADID

917.770.9173 | EYadid@ksrny.com

