



**OFFICE SPACE  
FOR LEASE**

# **Palm Barstow Professional Center**

For Further Information Please Contact:

**Justin Tancredi**  
CA DRE #01372876

(559) 449-2424

## **Leasing now!**

- 5424 N. Palm Ave: **Suite 106** - Approx. 1,793 sq. ft.
- 5446 N. Palm Ave: **Suite 105** - Approx. 914 sq. ft.
- Competitive lease rate; no CAM's or NNN's
- Well managed project - motivated ownership
- Excellent location, within walking distance to Fig Garden Village

*Russell G.*  
**Smith**  
*Inc.*

We assume the information contained to be correct. It is obtained from sources which we regard as reliable, but assume no liability for errors or omissions

# Palm Barstow Professional Center

## Area

The Palm Barstow Professional Center is a meticulously maintained, garden-style office complex located on the Northeast corner of Palm and Barstow Avenues. Hanging signage is available on the building.

## Available

5424 N. Palm Ave. Suite 106: Approx. 1,793 square feet  
Beautiful office space with 4 private offices, conference room, break room, private restroom, hardwood flooring in the front of the space.

5446 N. Palm Ave. Suite 105: Approx. 914 square feet  
Large open work area, three private offices, sink/coffee counter. Space is ready for immediate occupancy, Landlord will provide additional improvements for a qualified long-term Tenant.

## Lease Rates

5424 N. Palm Suite 106:  
\$3,300 per month - (\$1.85/sf modified Gross)

Tenant pays PG&E and Janitorial

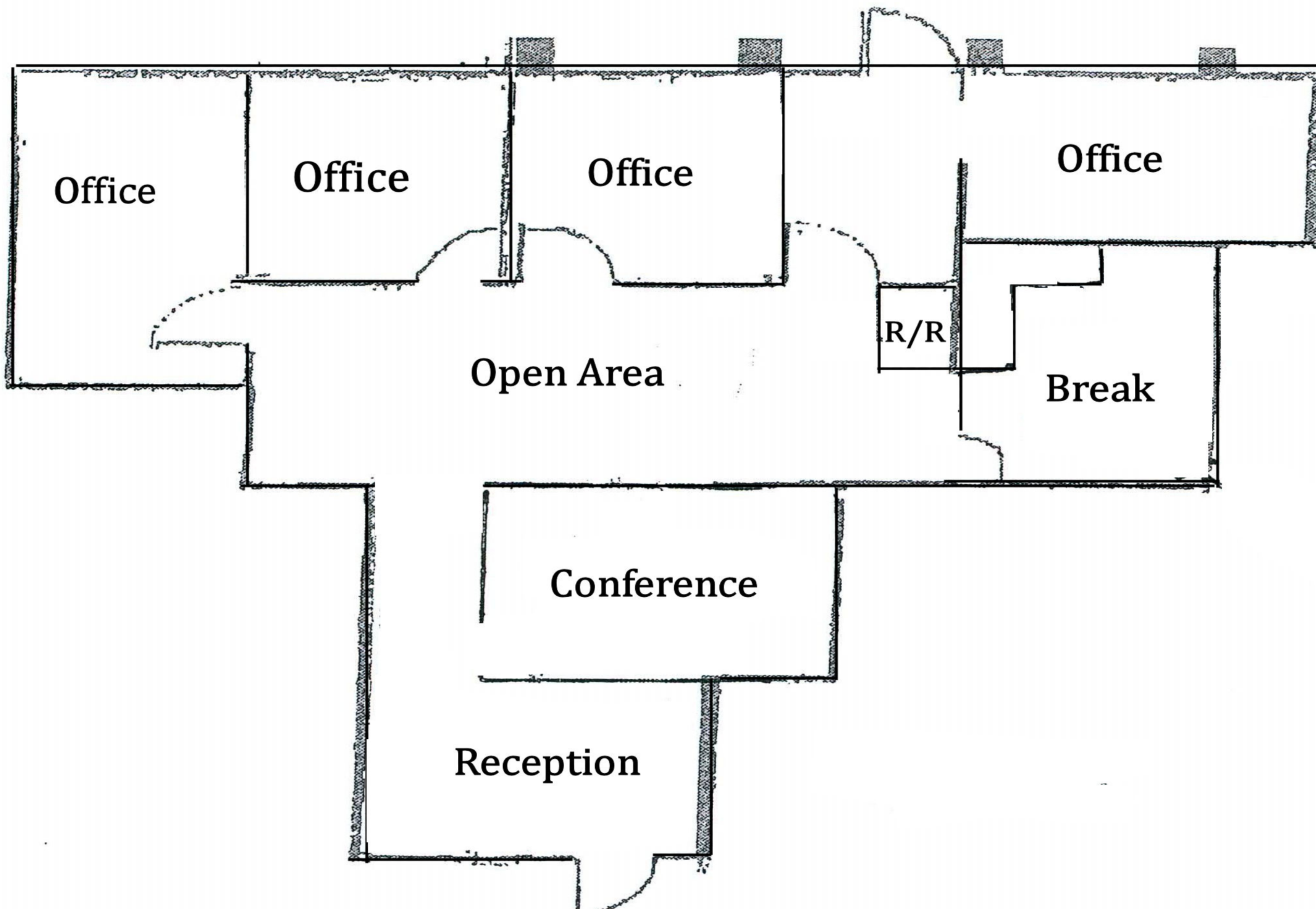
5446 N. Palm Suite 105:  
\$1,850 per month - (\$2.13/sf modified Gross)

Tenant pays PG&E and Janitorial

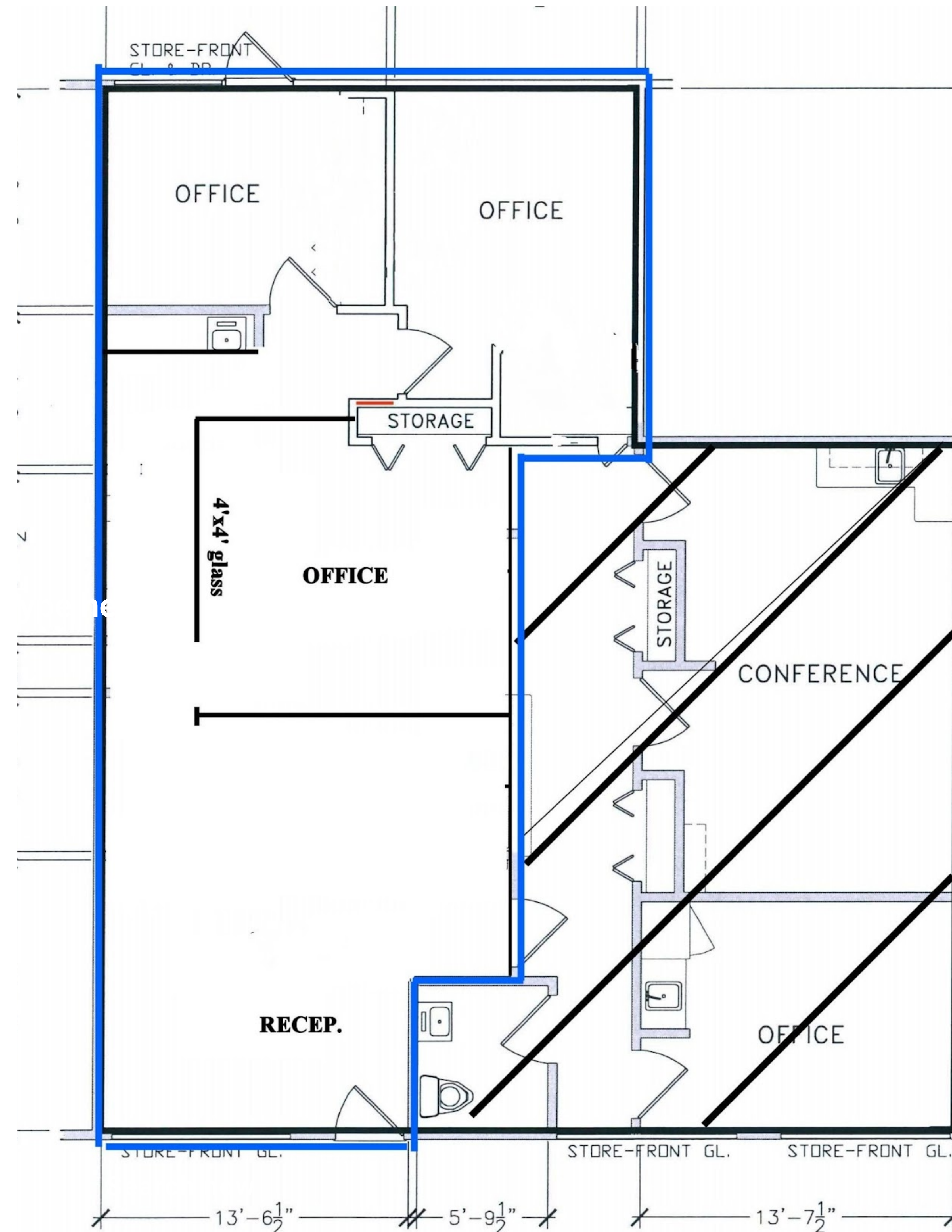


# 5424 N. Palm Avenue Floor Plan - Suite 106

5424 N. Palm Ave. Suite 106 - Approx. 1,793 sq. ft.



# 5446N. Palm Avenue Floor Plan - Suite 105



**Suite 105**  
**Approx. 914 SF**

# Palm Barstow Professional Center Aerial View

