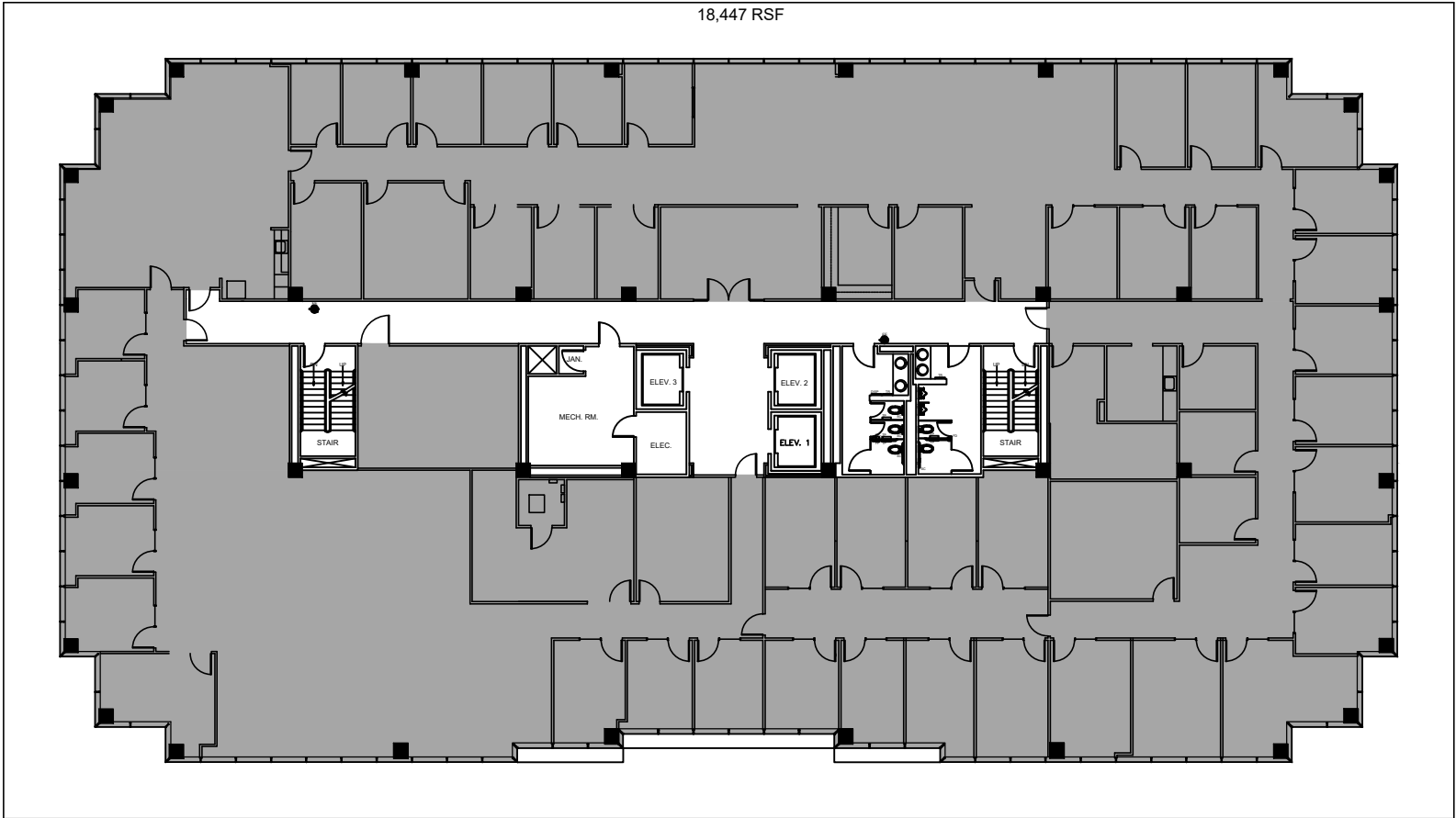


VACANT
SUITE 600
18,447 RSF



Floor plans are for conceptual purposes only; they are not to scale and may not reflect existing conditions. As-builts must be verified. Not for regulatory approval, permitting, or construction.



2625 BAY AREA BLVD. TWO CORPORATE PLAZA LEVEL 06

CB224403.01-YH APRIL 11, 2024



LEASING CONTACT

DAVID LEE
(713)270-3335
DAVID.LEE@TRANSWESTERN.COM
DOUG LITTLE
(713)272-1284
DOUG.LITTLE@TRANSWESTERN.COM
JACK SCHARNBERG
(713)407-8717
JACK.SCHARNBERG@TRANSWESTERN.COM



PROPERTY MANAGEMENT
(281)480-6876



CONTACT
5065 Westheimer Rd., Ste #1100, Houston, TX 77056
Phone: (713) 783-5900 | Fax: (713) 783-6066
www.cdi-douglas-pye.com