



OWNED & DEVELOPED BY:

**Woudenberg**  
**Properties**

INDUSTRIAL OUTDOOR STORAGE

**AVAILABLE**  
**INDUSTRIAL**  
**LAND**

**BUILD TO SUIT**

**4 OR 8 ACRES**



FOR MORE INFORMATION:

**JEFF**  
**WOUDENBERG**

OWNER/AGENT

(480) 620-8555

JEFF@WOUDENBERGPROPS.COM

**7250-7300 N. REEMS RD,**  
**GLENDAL, AZ**

# PROPOSED SITE PLAN & DETAILS

**Build to Suit - Available Land**  
7250-7300 N. Reems Rd, Glendale, AZ

**Parcel Numbers:** 501-49-008U & 008V

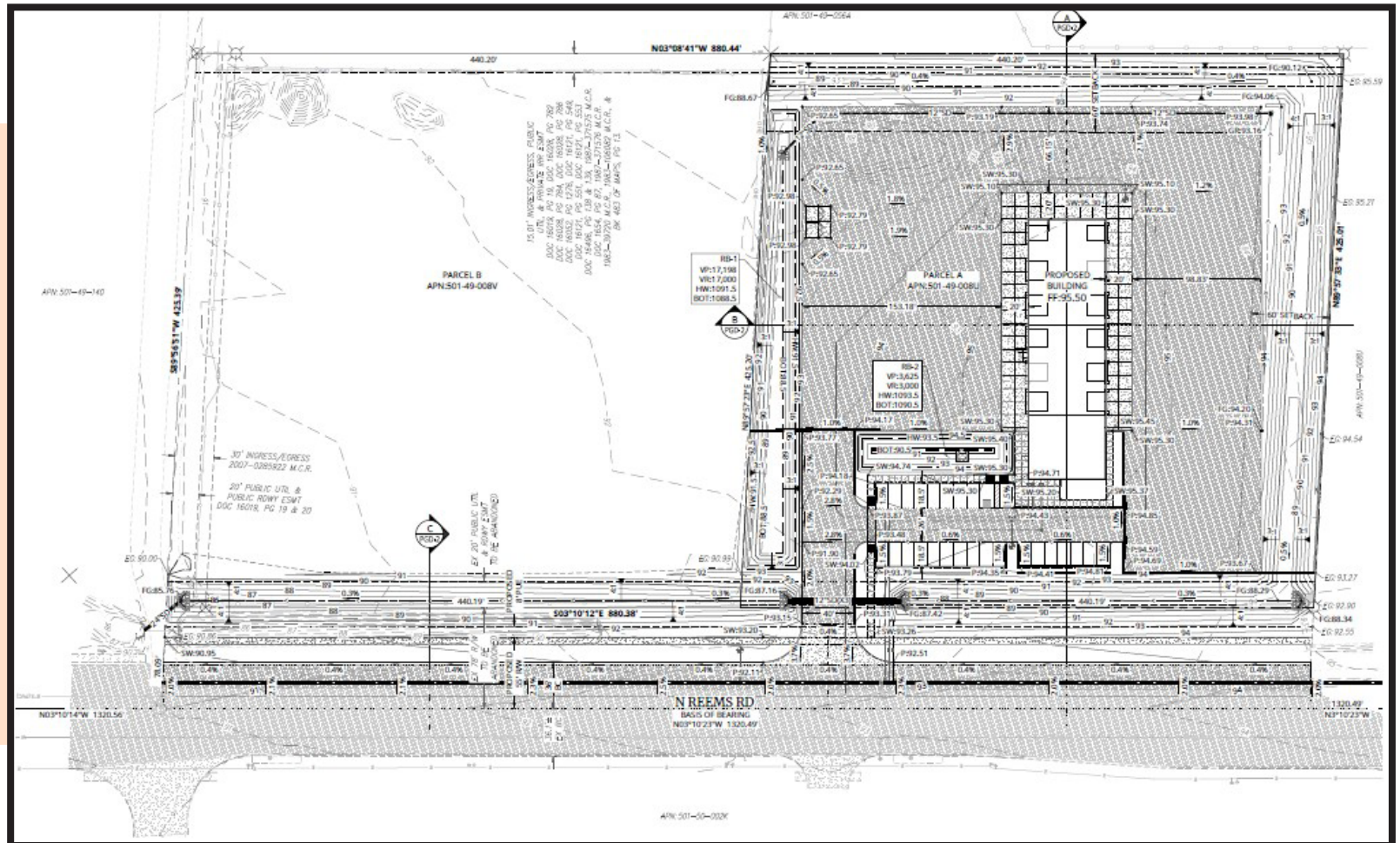
**Zoning:** PAD, city of Glendale (Variable Industrial Outdoor Storage uses approved, comparable to M-1)

**Lot Sizes:** Parcel A: 187,308 SF or 4.3 Acres Parcel B: 187,308 SF or 4.3 Acres Total: 374,616 SF or 8.6 Acres

**ENTITLED INDUSTRIAL ZONED LAND IN LOOP 303 COORIDOR, ANNEXED INTO CITY OF GLENDALE, FULL UTILITIES AVAILABLE**

Approved uses include but are not limited to the following:

- Building Contractors, Equipment & Materials Storage Indoor and Outdoor
- Distribution Center Indoor & Yard Outdoor
- Heavy Equipment Sales & Rental
- Manufacturing and Assembly, Minor
- Outdoor Storage
- Recycling Center
- Storage RV
- Wholesale Warehouse



# INDUSTRIAL LAND BUILD TO SUIT 4 OR 8 ACRES

7250-7300 N. Reems Rd,  
Glendale, AZ

FOR MORE INFORMATION:

**JEFF  
WOUDENBERG**

OWNER/AGENT

(480) 620-8555

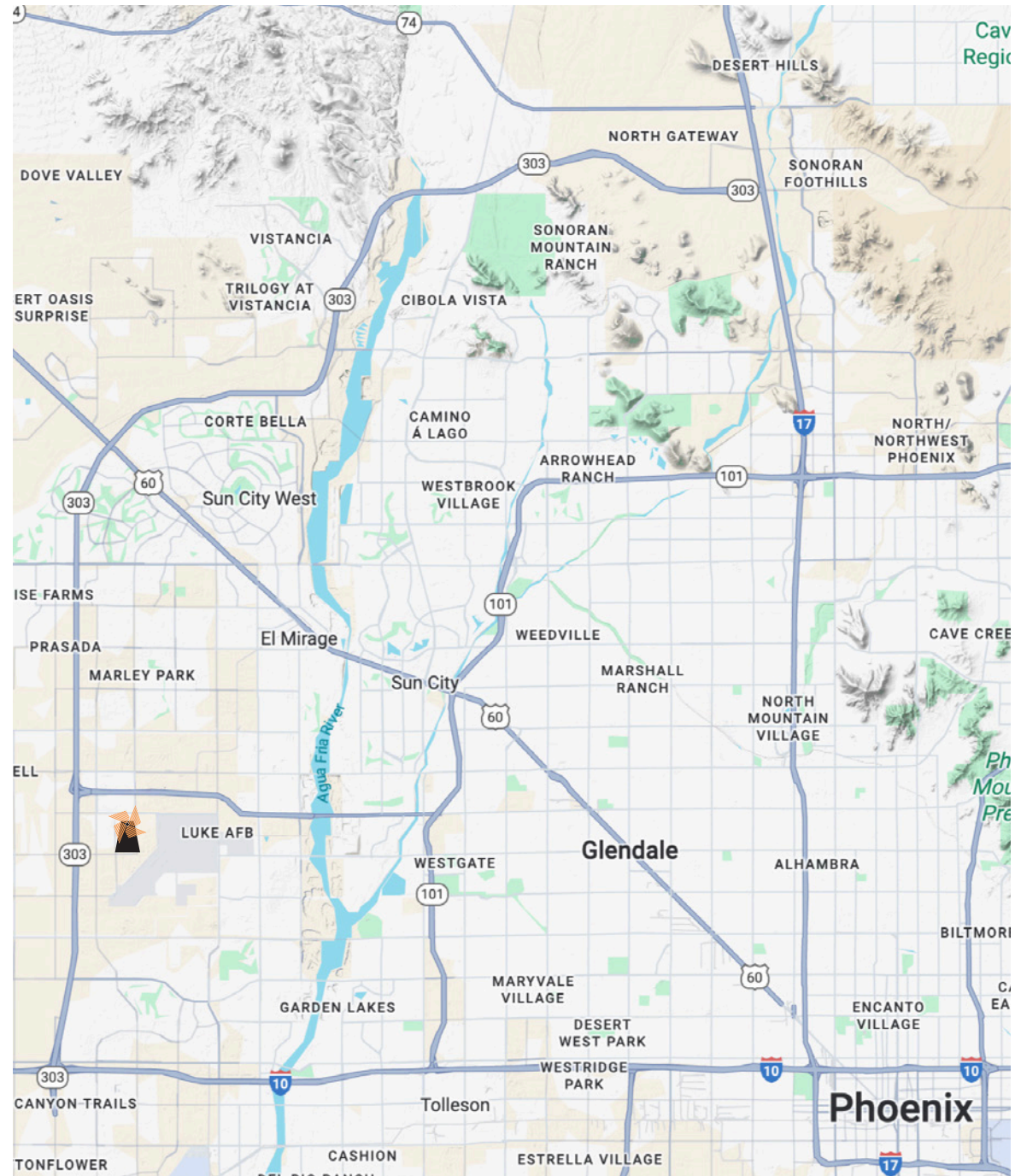
JEFF@WOUDENBERGPROPS.COM

OWNED & DEVELOPED BY:



**Woudenberg  
Properties**

INDUSTRIAL OUTDOOR STORAGE



*The Information contained herein has either been given to us by the owner of the property or obtained from sources that we deem reliable. No warranties or representations, expressed or implied, are made as to the accuracy of the information contained herein.*