

MASON CITY STAPLES RETAIL FOR LEASE

3440 4th St SW | Mason City, Iowa



OVERVIEW

Prime location in Mason City/Clear Lake’s premier retail corridor. Staples lease is expiring in 2027, and would consider vacating space early. Exquisite junior box location adjacent to Target and TJ Maxx.

DEMOGRAPHICS

ESRI 2025	3 mile	5 mile
Population	15,766	27,591
Avg. HH Income	\$76,426	\$86,713

FEATURES

- 23,733 SF
- 2 Dedicated Docks
- Asking Rent: Call Broker
- Tax: \$2.70
- Ins: \$0.55
- CAM: \$0.80

FOR MORE INFORMATION:

David Wolf | Cell: 319-530-6342
Email: davidwolf@buyersrealtyinc.com



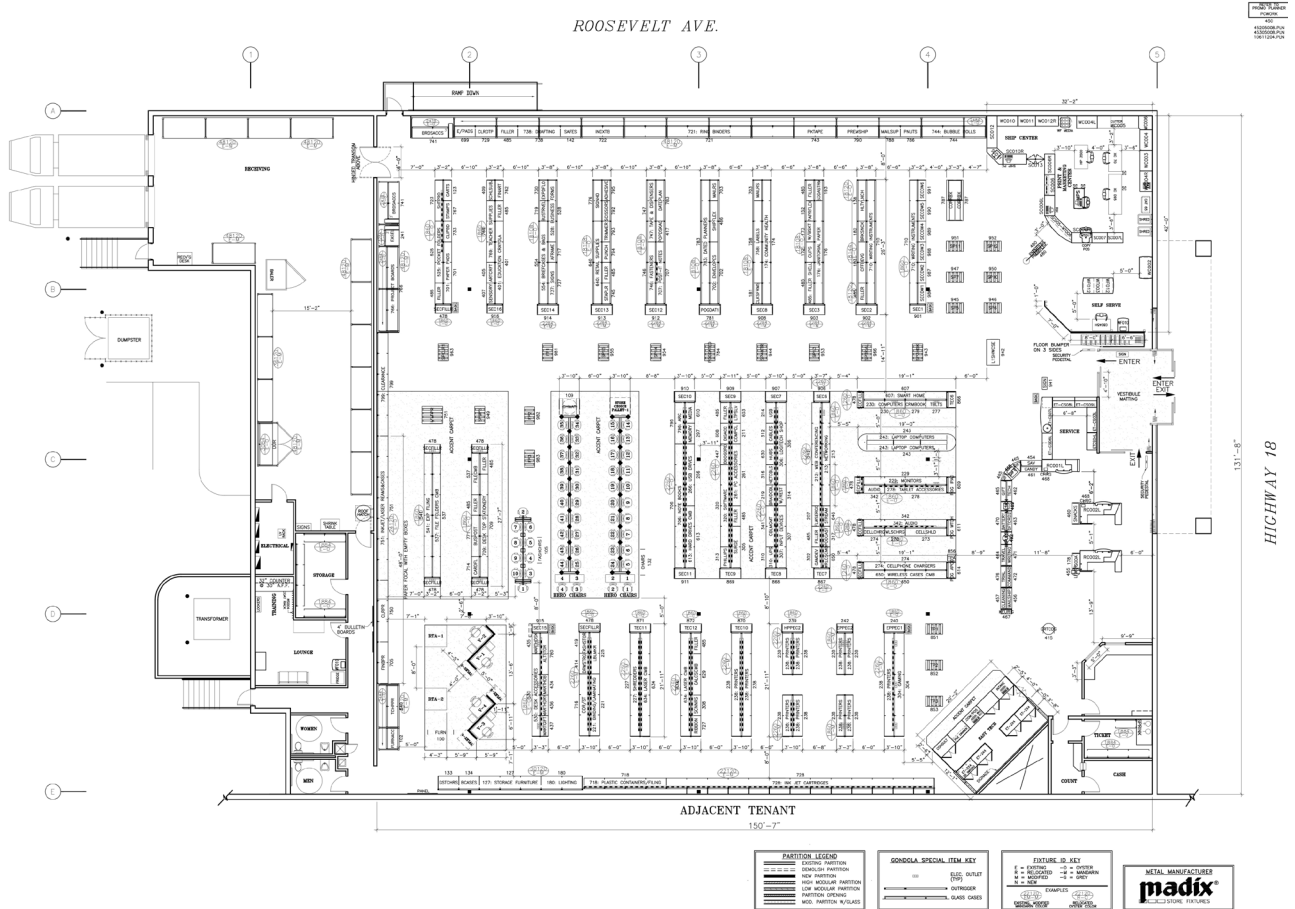
A MEMBER OF
CHAINLINKS
RETAIL ADVISORS

4350 Westown Parkway Suite 100 West Des Moines, IA 50266
www.buyersrealtyinc.com 515-277-4000

BUYERS REALTY INC.

MASON CITY STAPLES RETAIL FOR LEASE

3440 4th St SW | Mason City, Iowa



4350 Westown Parkway Suite 100 West Des Moines, IA 50266
www.buyersrealtyinc.com 515-277-4000

MASON CITY STAPLES RETAIL FOR LEASE

3440 4th St SW | Mason City, Iowa

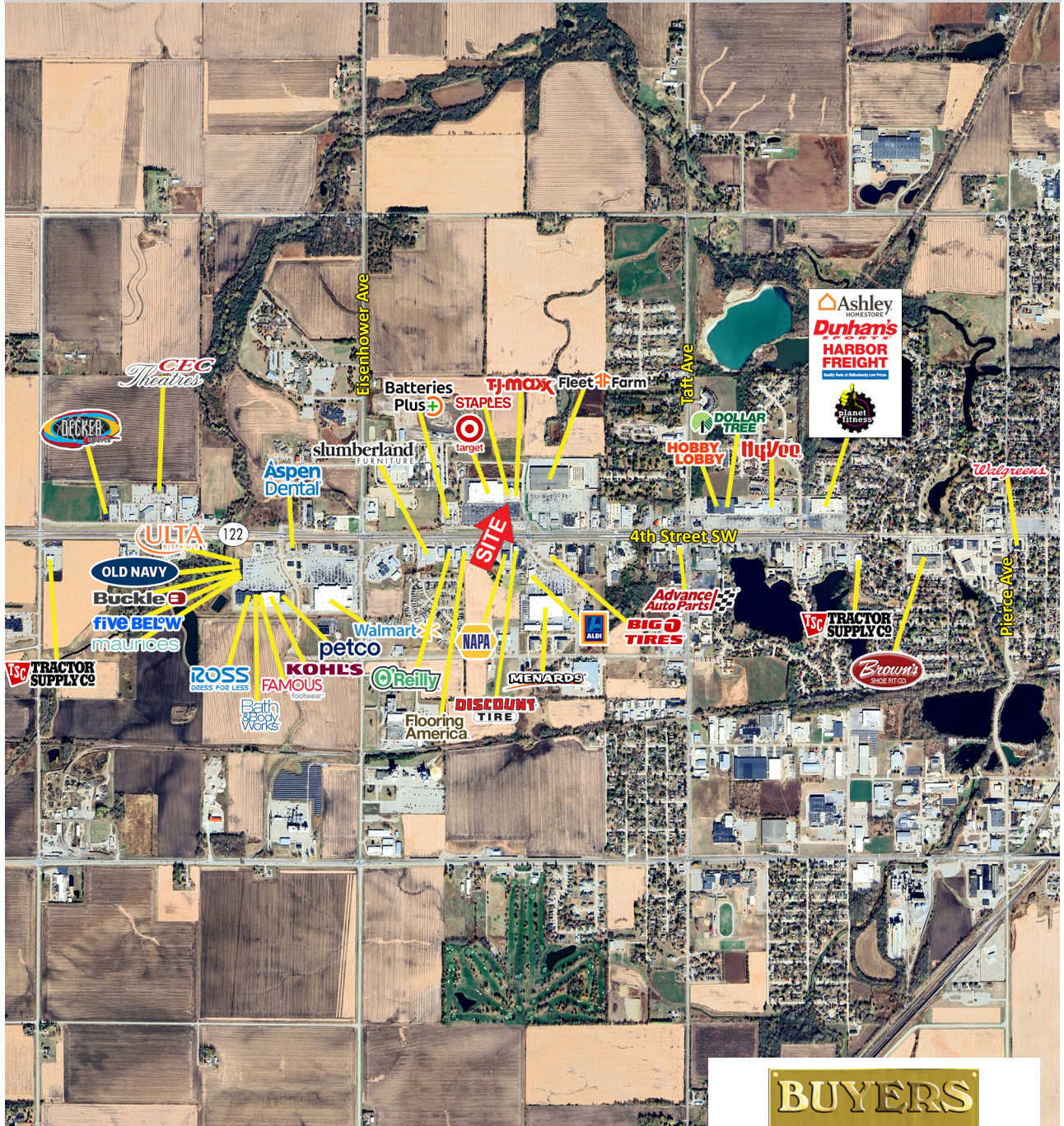


4350 Westown Parkway Suite 100 West Des Moines, IA 50266
www.buyersrealtyinc.com 515-277-4000

BUYERS REALTY INC.

MASON CITY STAPLES RETAIL FOR LEASE

3440 4th St SW | Mason City, Iowa



FOR MORE INFORMATION:

David Wolf | Cell: 319-530-6342
Email: davidwolf@buyersrealtyinc.com



A MEMBER OF
CHAINLINKS
RETAIL ADVISORS

4350 Westown Parkway Suite 100 West Des Moines, IA 50266
www.buyersrealtyinc.com 515-277-4000