

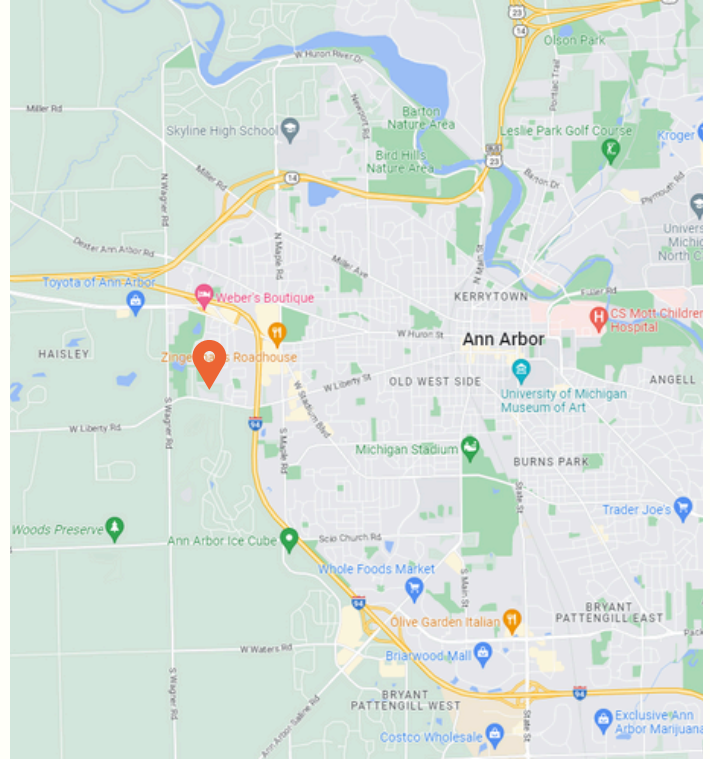


COMMERCIAL
real property, real value.

3200 W Liberty Rd.

Ann Arbor, MI 48103

Office for Lease // Executive Summary



OFFERING SUMMARY

- LEASE RATE:** \$24 (MG)
- BUILDING SIZE:** 18,000 SF
- AVAILABLE SF:** 925 -2,382 SF
- ZONING:** O - OFFICE
- PARKING:** 130/7.2 RATIO

LOCATION OVERVIEW

This two-story, multiple tenant medical office building provides ample parking, quiet setting and is convenient to Westgate and Maple Shopping Centers, downtown Ann Arbor, US 94, and M14.

FOR LEASE

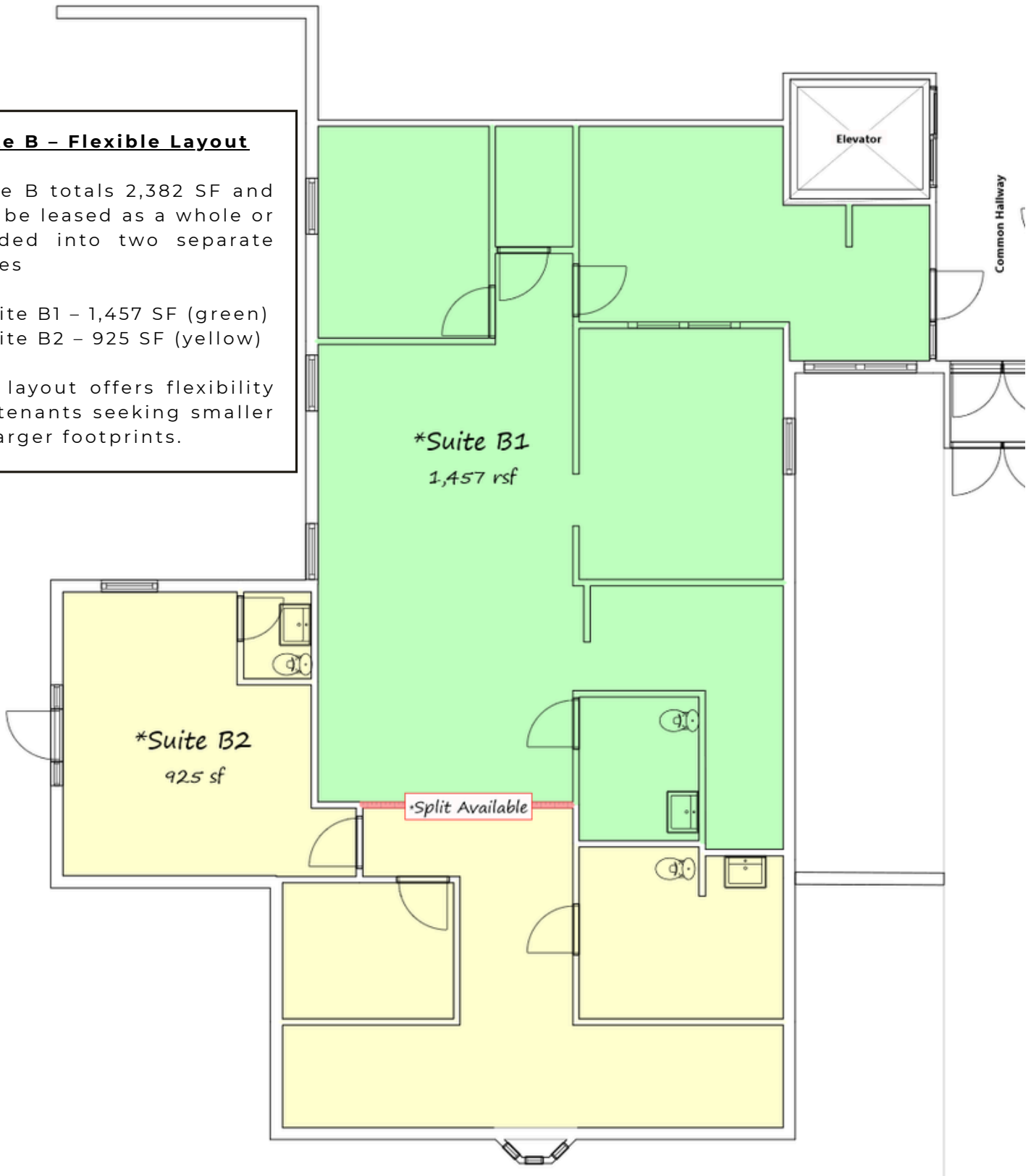
SPACES	RATE	SIZE
SUITE B	\$24.0 (MG)	2,382 SF
SUITE B1	\$24.0 (MG)	1,457 SF
SUITE B2	\$24.0 (MG)	925 SF

Suite B - Flexible Layout

Suite B totals 2,382 SF and can be leased as a whole or divided into two separate suites

- Suite B1 - 1,457 SF (green)
- Suite B2 - 925 SF (yellow)

The layout offers flexibility for tenants seeking smaller or larger footprints.



3200 W. Liberty Rd.

Ann Arbor, MI 48103

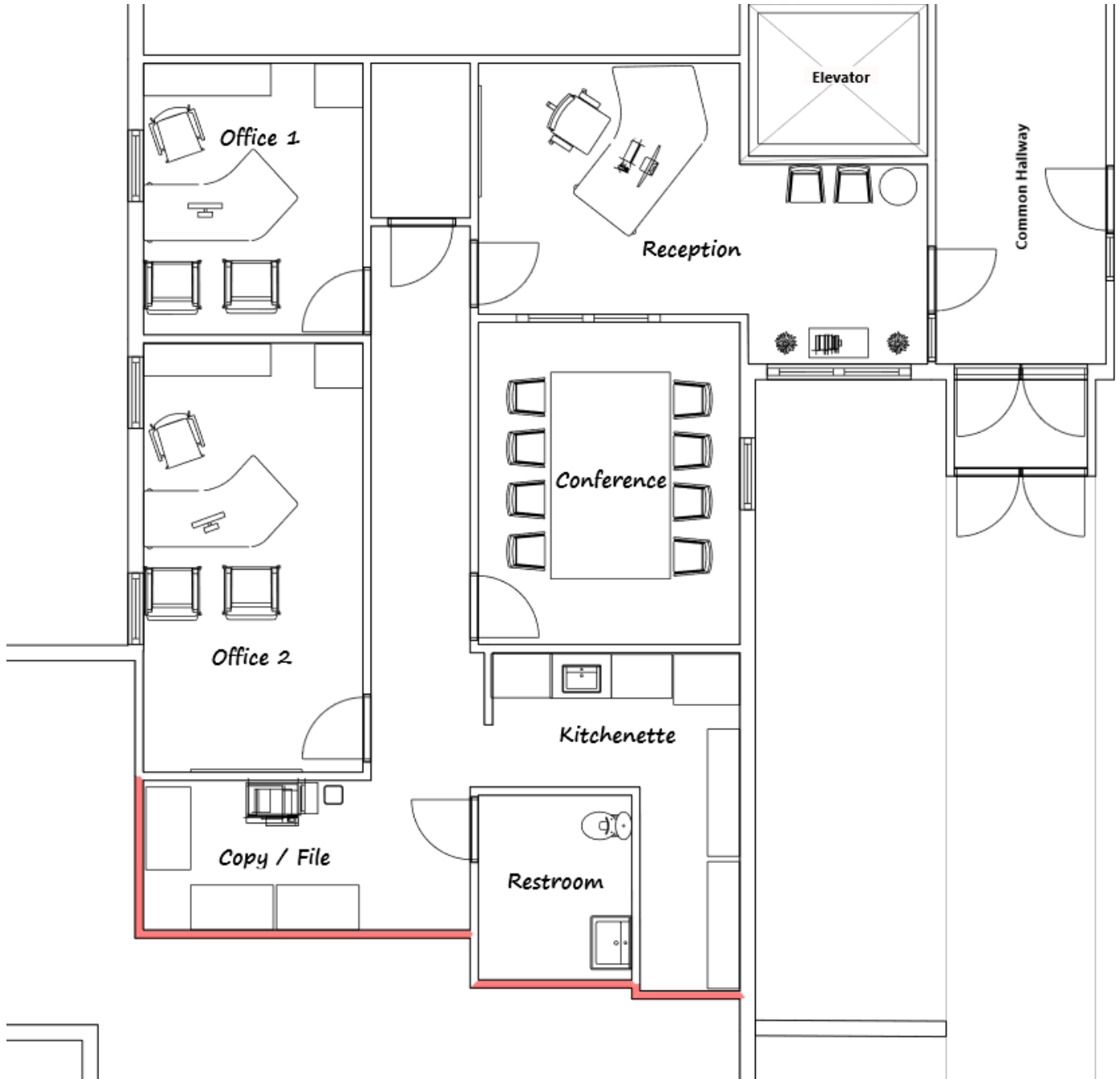
Office for Lease // Suite B Virtually Furnished



3200 W Liberty Rd.

Ann Arbor, MI 48103

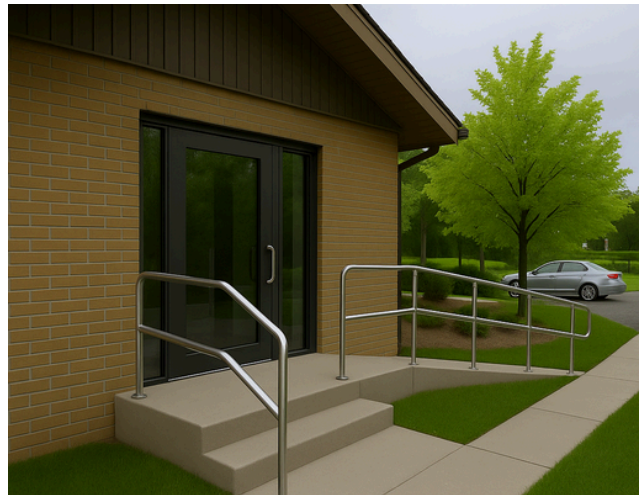
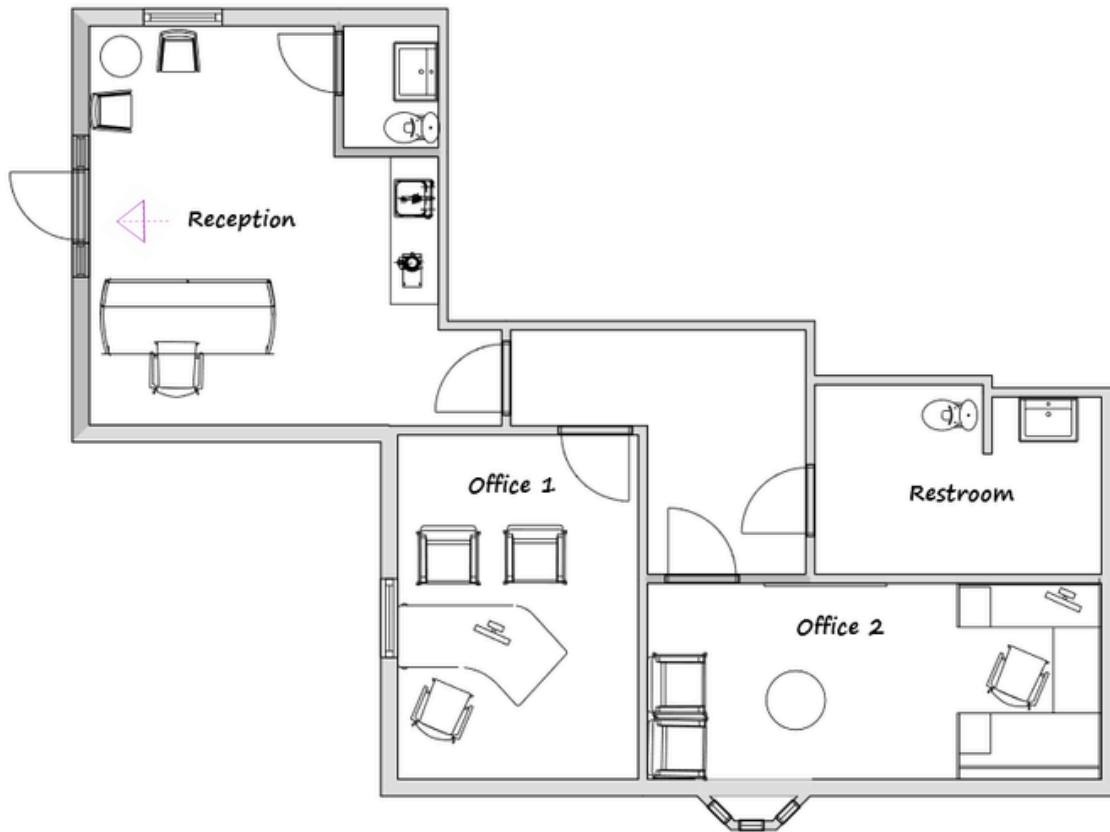
Office for Lease // B1 Possible Build



3200 W Liberty Rd.

Ann Arbor, MI 48103

Office for Lease // B2 Possible Build



Suite B2 – Buildout Rendering.



3200 W. Liberty Rd.

Ann Arbor, MI 48103

Office for Lease // Broker



TYLER BURGOON

Broker / Operations Director

tyler@jpcommercialre.com
office 734 994 8800
cell 734 730 5633



JP COMMERCIAL REAL ESTATE (JPCRE) DOES NOT MAKE ANY REPRESENTATIONS OR WARRANTIES, EXPRESS OR IMPLIED, AS TO THE ACCURACY OR COMPLETENESS OF THE INFORMATION CONTAINED HEREIN, AND NOTHING CONTAINED HEREIN IS OR SHALL BE RELIED UPON AS A PROMISE OR REPRESENTATION AS TO THE FUTURE REPRESENTATION OF THE PROPERTY. THIS MAY INCLUDE CERTAIN STATEMENTS AND ESTIMATES WITH RESPECT TO THE PROPERTY. JPCRE DISCLAIMS ANY AND ALL LIABILITY FOR REPRESENTATIONS OR WARRANTIES, EXPRESSED OR IMPLIED, CONTAINED IN OR OMITTED INFORMATION. THE INFORMATION CONTAINED HEREIN IS SUBJECT TO CHANGE WITHOUT NOTICE AND THE RECIPIENT OF THESE MATERIALS SHALL NOT LOOK TO JPCRE OR THE JPCRE ADVISOR NOR ANY OF THEIR OFFICERS, EMPLOYEES, REPRESENTATIVES, INDEPENDENT CONTRACTORS OR AFFILIATES, FOR THE ACCURACY OR COMPLETENESS THEREOF.

