

8970 DIXIE HIGHWAY
CLARKSTON, MICHIGAN

OFFICE CAMPUS FOR SALE
14,430 Square Feet Available



**SIGNATURE
ASSOCIATES**
KNOW SIGNATURE | KNOW RESULTS



PROPERTY FEATURES

- Unique opportunity to purchase an office campus on 6.39 acres with lake access and moments from I-75 in Clarkston
- 14,430 square feet available
 - Building A: 7,694 sq. ft.
 - Building B: 6,736 sq. ft.
- Zoned R-1
- Built in 1990, retrofit in 2004
- Fantastic property with gymnasium
- Formerly used as private school, but many other uses are possible
- Asking Price: \$1,200,000 (\$83.16/sq. ft.)



For more information, please contact:

JOHN BOYD
(248) 948 0102
jboyd@signatureassociates.com

JEFFREY TREPECK
(248) 359 0626
jtrepeck@signatureassociates.com

SIGNATURE ASSOCIATES
One Towne Square, Suite 1200
Southfield, MI 48076
www.signatureassociates.com

8970 Dixie Highway – Clarkston, Michigan

Office For Sale

14,430
Square Feet
AVAILABLE

Additional Images



For more information, please contact:

JOHN BOYD
(248) 948 0102
jboyd@signatureassociates.com

JEFFREY TREPECK
(248) 359 0626
jtrepeck@signatureassociates.com

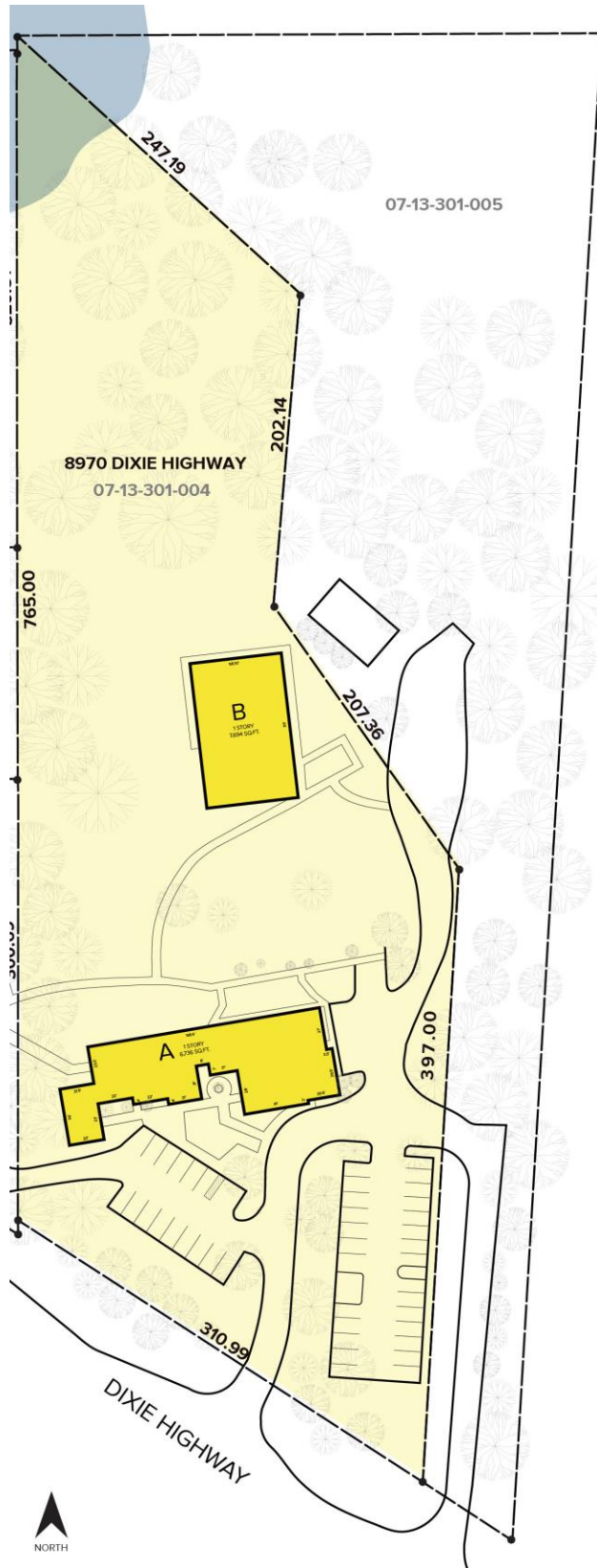
SIGNATURE ASSOCIATES
One Towne Square, Suite 1200
Southfield, MI 48076
www.signatureassociates.com

8970 Dixie Highway – Clarkston, Michigan

Office For Sale

14,430
Square Feet
AVAILABLE

Site Plan



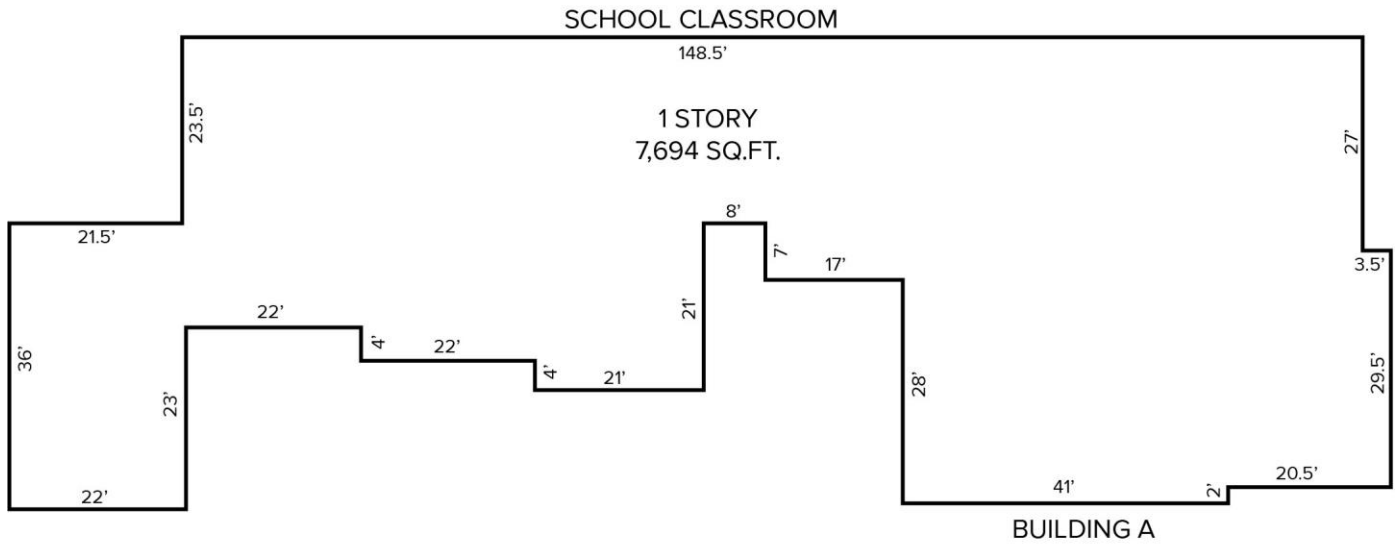
For more information, please contact:

JOHN BOYD
(248) 948 0102
jboyd@signatureassociates.com

JEFFREY TREPECK
(248) 359 0626
jtrepeck@signatureassociates.com

SIGNATURE ASSOCIATES
One Towne Square, Suite 1200
Southfield, MI 48076
www.signatureassociates.com

Floor Plan



For more information, please contact:

JOHN BOYD
(248) 948 0102
jboyd@signatureassociates.com

JEFFREY TREPECK
(248) 359 0626
jtrepeck@signatureassociates.com

SIGNATURE ASSOCIATES
One Towne Square, Suite 1200
Southfield, MI 48076
www.signatureassociates.com

8970 Dixie Highway – Clarkston, Michigan

Office For Sale

14,430
Square Feet
AVAILABLE

Aerial



For more information, please contact:
JOHN BOYD
(248) 948 0102
jboyd@signatureassociates.com

JEFFREY TREPECK
(248) 359 0626
jtrepeck@signatureassociates.com

SIGNATURE ASSOCIATES
One Towne Square, Suite 1200
Southfield, MI 48076
www.signatureassociates.com

Information is subject to verification and no liability for errors or omissions is assumed. Price is subject to change and listing withdrawal.