

FOR LEASE

Owned and Operated by 

SOUTHCENTER WEST, BUILDING C

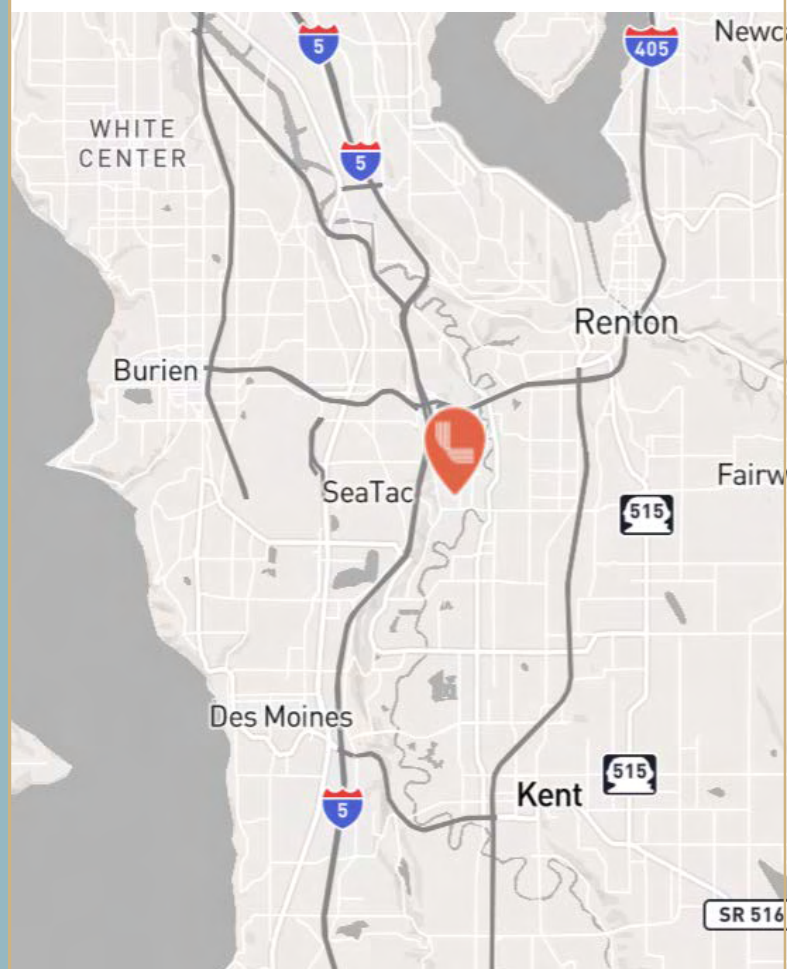
1147 Andover Park West, Tukwila, WA 98188

±15,925 SF



SPECIFICATIONS

Building available	±15,925 SF
Office available	1,588 SF
Clear height	24'
Dock high doors	3
Column spacing	24' x 43'
Parking	Ample
Lighting	Energy efficient LED
Power	100amps, 277/480v
Location	Immediate access to I-5, I-405, & W Valley Hwy
Rate	Contact Brokers
Available	May 1, 2026



LEASING INFO & CONTACT

Chris Spofford
David Cahill

(425) 890-6963 / chris.spofford@jll.com
(206) 930-5599 / david.cahill@jll.com



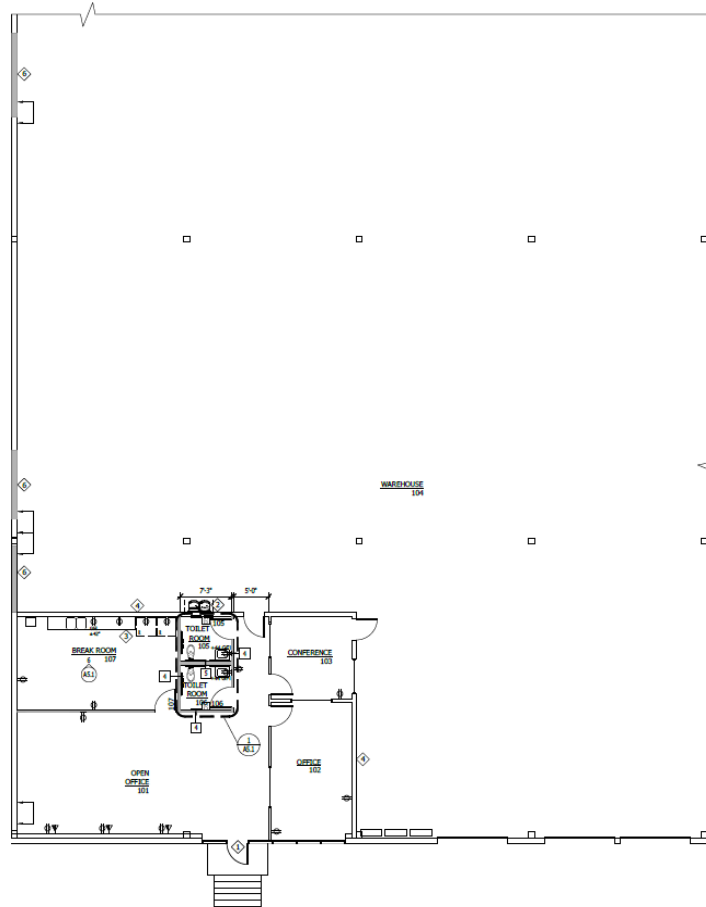
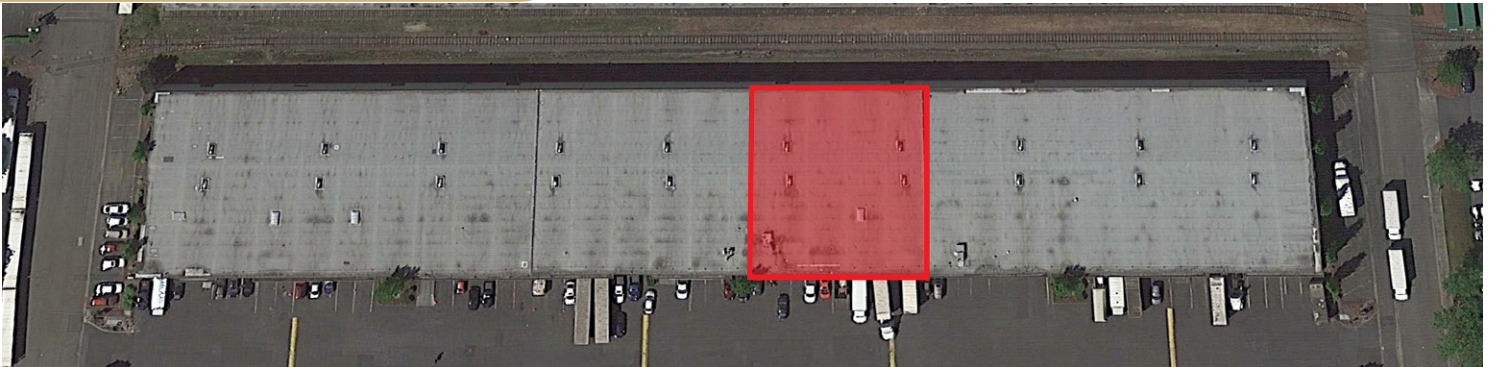
FOR LEASE

Owned and Operated by 

SOUTHCENTER WEST, BUILDING C

1147 Andover Park West, Tukwila, WA 98188

±15,588 SF



**LEASING INFO
& CONTACT**

Chris Spofford
David Cahill

(425) 890-6961 / chris.spofford@jll.com
(206) 930-5599 / david.cahill@jll.com

