



2100 WHARTON

R&D STYLE OFFICE FOR SUBLEASE

PITTSBURGH, PA

For Further Information, Contact:

Charlie Must, CCIM
Senior Associate
412.394.9806
charlie.must@cbre.com

CBRE



ULTIMATE FLEXIBILITY

- Furniture to convey with sublease
- Large open workspaces, updated eat in style kitchen, several conference, meeting and board rooms
- R&D/Production space
- On site parking allocation available to Subtenant
- Tenant shared conferencing center on-site

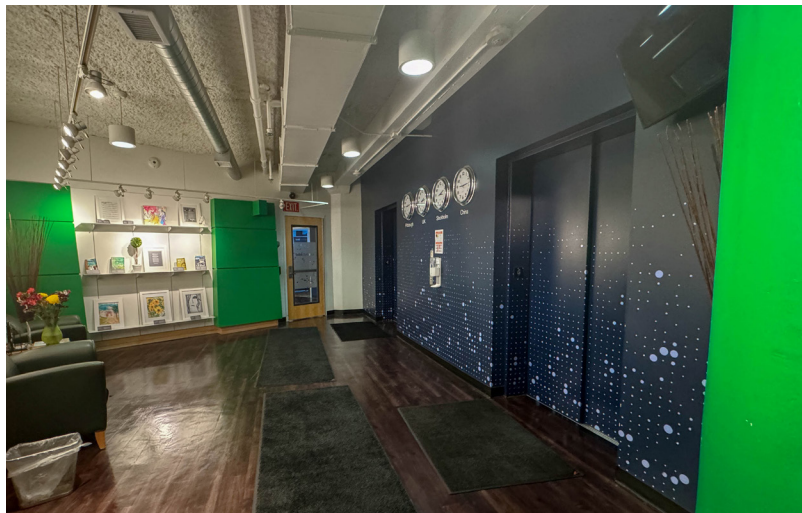
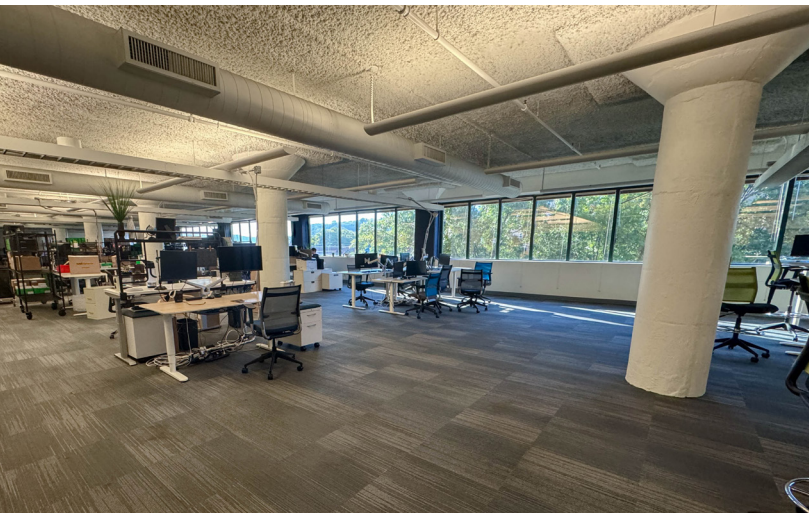
SPACE HIGHLIGHTS

Premises:	Entire 4th Floor with additional space on 3rd floor
Available SF:	Up to 42,455 RSF
Lease Expiration:	September 2027
Co Tenancy or Sublease Rate	Available upon request

R&D STYLE OFFICE FOR SUBLEASE

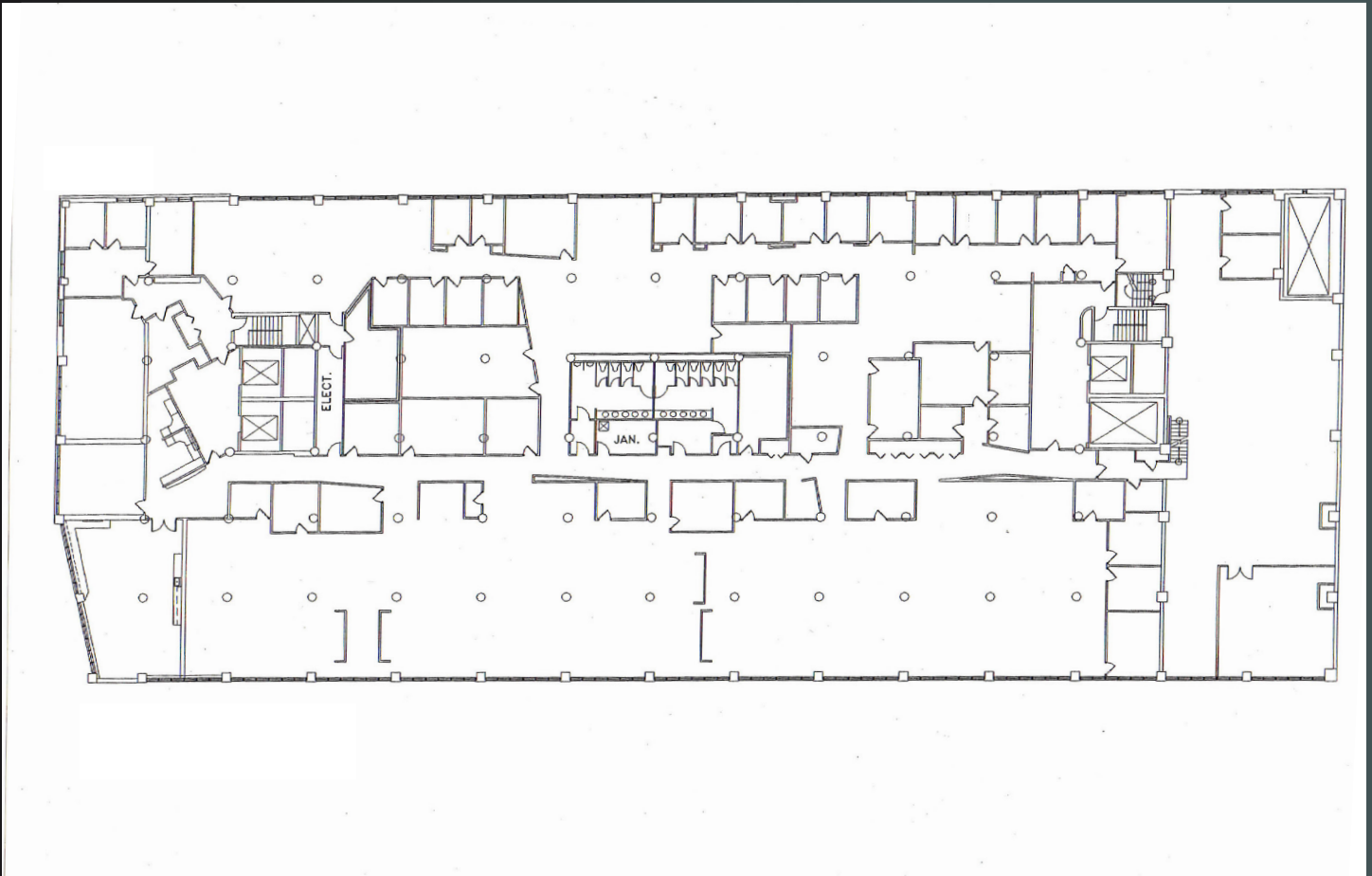
2100 WHARTON | PITTSBURGH, PA

CBRE



FLOOR PLAN

36,475 RSF
AVAILABLE



R&D STYLE OFFICE FOR SUBLEASE

2100 WHARTON | PITTSBURGH, PA



AMENITIES



2 blocks to East Carson
Street retail and restaurants



Neighboring Giant Eagle
anchored shopping center
Wharton Square



On site fitness center and
grab n go market



Convenient access to
Three Rivers Heritage Trail

R&D STYLE OFFICE FOR SUBLEASE

2100 WHARTON | PITTSBURGH, PA

CBRE

R&D STYLE OFFICE FOR SUBLEASE

PITTSBURGH, PA



For Further Information, Contact:

Charlie Must, CCIM
Senior Associate
412.394.9806
charlie.must@cbre.com

© 2025 CBRE, Inc. All rights reserved. This information has been obtained from sources believed reliable, but has not been verified for accuracy or completeness. You should conduct a careful, independent investigation of the property and verify all information. Any reliance on this information is solely at your own risk. CBRE and the CBRE logo are service marks of CBRE, Inc. All other marks displayed on this document are the property of their respective owners, and the use of such logos does not imply any affiliation with or endorsement of CBRE. Photos herein are the property of their respective owners. Use of these images without the express written consent of the owner is prohibited.

CBRE

www.cbre.com