

**AVAILABLE FOR LEASE**

**±16,897 SF INDUSTRIAL BUILDING | DIVISIBLE SIZES AVAILABLE**

14201-14211 Chambers Road, Tustin, CA



**JOHN COLLINS**

Senior Vice President | Partner

714.269.4626 | [jcollins@voitco.com](mailto:jcollins@voitco.com)

Lic. #01235509

**JORDAN KEMPER**

Senior Associate

949.773.5668 | [jkemper@voitco.com](mailto:jkemper@voitco.com)

Lic. #02228841

**MICHAEL COLLINS**

Associate

949.263.5313 | [mcollins@voitco.com](mailto:mcollins@voitco.com)

Lic. #02294577

**Voit**

REAL ESTATE SERVICES

2020 Main Street, Suite 100,  
Irvine, CA 92614  
[www.voitco.com](http://www.voitco.com)

# AVAILABLE FOR LEASE

## ±16,897 SF INDUSTRIAL BUILDING

14201-14211 Chambers Road, Tustin, CA

### PROPERTY FEATURES:

#### ±16,897 SF Industrial Building

- ±4,134 SF Office Space
- 2 GL Doors
- 400 Amps 120/208V

#### Unit 14201: ±7,925 SF Industrial Space

- ±2,855 SF Office Space
- 1 GL Door
- 200 Amps 120/208V

#### Unit 14211: ±8,972 SF Industrial Space

- ±1,279 SF Office Space
- 1 GL Door
- 200 Amps 120,208V

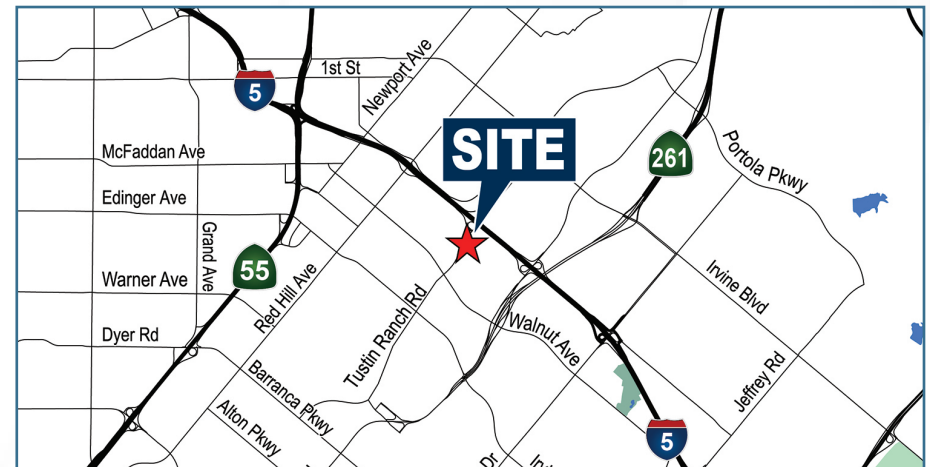
Grade Level Doors (10x10)

18' Clear Height

2.1:1,000 Parking

Sprinklered

±51,369 SF parcel



### JOHN COLLINS

Senior Vice President | Partner  
714.269.4626 | jcollins@voitco.com  
Lic. #01235509

### JORDAN KEMPER

Senior Associate  
949.773.5668 | jkemper@voitco.com  
Lic. #02228841

### MICHAEL COLLINS

Associate  
949.263.5313 | mcollins@voitco.com  
Lic. #02294577

# Voit

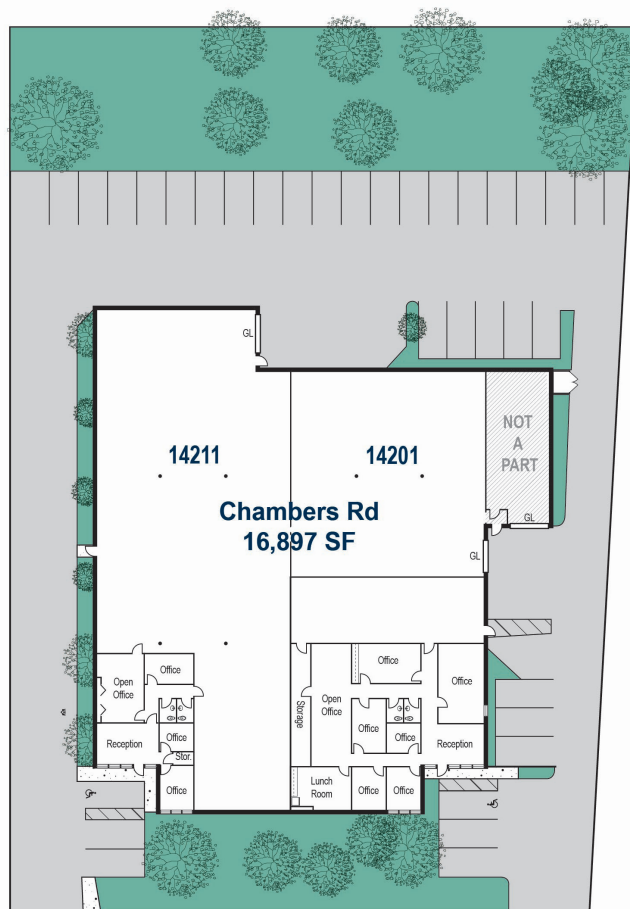
REAL ESTATE SERVICES

2020 Main Street, Suite 100,  
Irvine, CA 92614  
www.voitco.com

AVAILABLE FOR LEASE

# ±16,897 SF FLOOR PLAN

14201-14211 Chambers Road, Tustin, CA



CHAMBERS RD



## JOHN COLLINS

Senior Vice President | Partner

714.269.4626 | jcollins@voitco.com

Lic. #01235509

## JORDAN KEMPER

Senior Associate

949.773.5668 | jkemper@voitco.com

Lic. #02228841

## MICHAEL COLLINS

Associate

949.263.5313 | mcollins@voitco.com

Lic. #02294577

# Voit

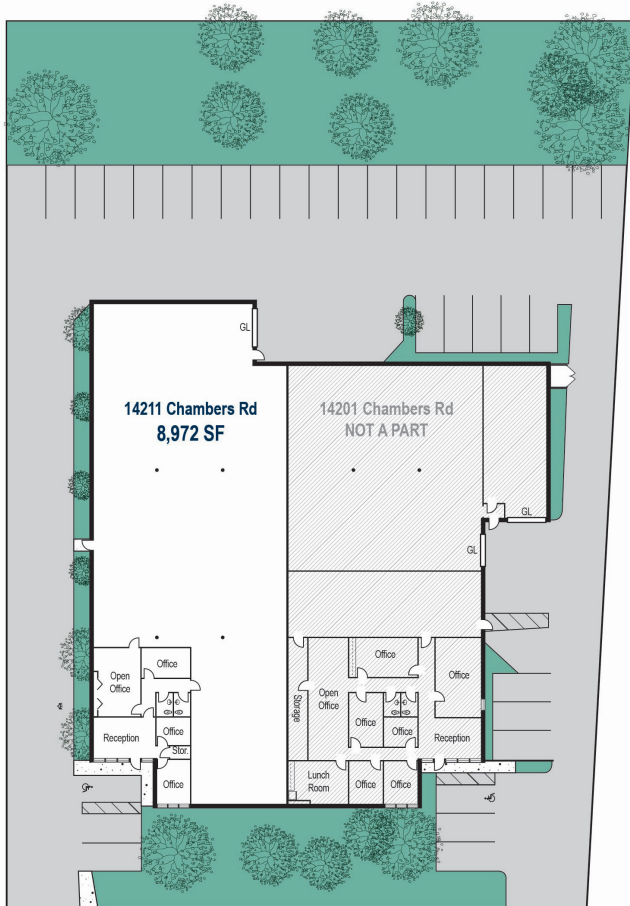
REAL ESTATE SERVICES

2020 Main Street, Suite 100,  
Irvine, CA 92614  
www.voitco.com

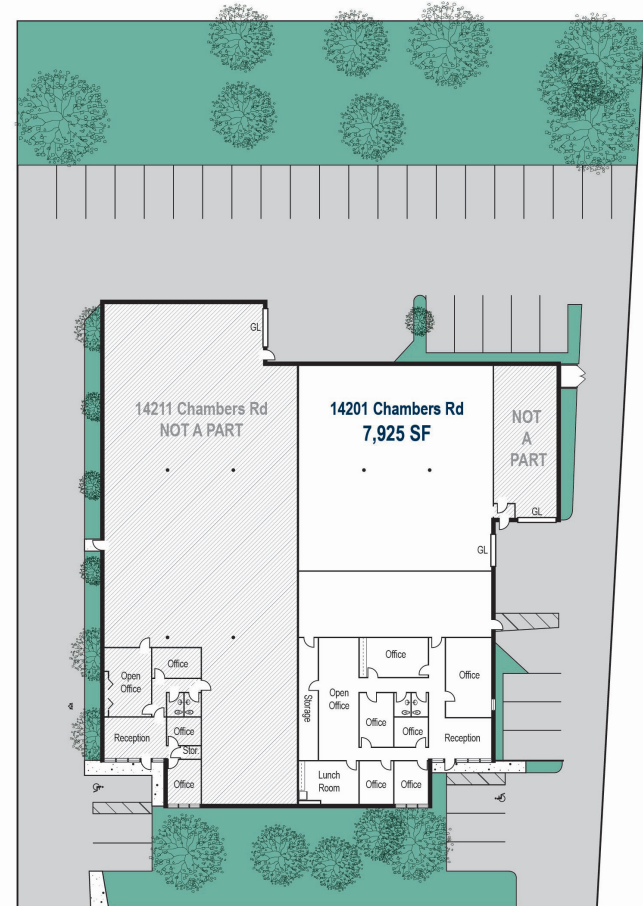
AVAILABLE FOR LEASE

# DIVISIBLE FLOOR PLANS

14201-14211 Chambers Road, Tustin, CA



CHAMBERS RD



CHAMBERS RD

## JOHN COLLINS

Senior Vice President | Partner

714.269.4626 | jcollins@voitco.com

Lic. #01235509

## JORDAN KEMPER

Senior Associate

949.773.5668 | jkemper@voitco.com

Lic. #02228841

## MICHAEL COLLINS

Associate

949.263.5313 | mcollins@voitco.com

Lic. #02294577

# Voit

REAL ESTATE SERVICES

2020 Main Street, Suite 100,  
Irvine, CA 92614  
www.voitco.com

# AVAILABLE FOR LEASE AMENITIES MAP

14201-14211 Chambers Road, Tustin, CA



## JOHN COLLINS

Senior Vice President | Partner

714.269.4626 | jcollins@voitco.com

Lic. #01235509

## JORDAN KEMPER

Senior Associate

949.773.5668 | jkemper@voitco.com

Lic. #02228841

## MICHAEL COLLINS

Associate

949.263.5313 | mcollins@voitco.com

Lic. #02294577

# Voit

REAL ESTATE SERVICES

2020 Main Street, Suite 100,  
Irvine, CA 92614  
www.voitco.com