

SOUTH 96TH BUSINESS PARK

AVAILABLE FOR LEASE

410 SOUTH 96TH STREET | SEATTLE, WA 98108

SOUTH SEATTLE WAREHOUSE SPACE IN GATED BUSINESS PARK



South 96th Business Park provides tenants needing smaller distribution space with a South Seattle location, easy access to nearby freeways, Sea-Tac Airport and the Port of Seattle, along with DSL and T-1 phone capability.

PROPERTY FEATURES

- Three-building office and warehouse complex of 97,864 SF with gated access, providing spaces from 1,375 SF to 20,000 SF.
- Direct access to SR 599 and I-5, 518 and 509 and near airports, downtown Seattle and Port of Seattle
- 15' and 22' clear height
- Grade level and dock high loading
- No B&O tax
- Zoning classification MH (Heavy Manufacturing)
- Owner managed and well-maintained

SPENCER MEAD
206.787.1476
smead@neilwalter.com

JIM HONAN
206.787.1464
jhonan@neilwalter.com



*professionally
managed/owned by:*



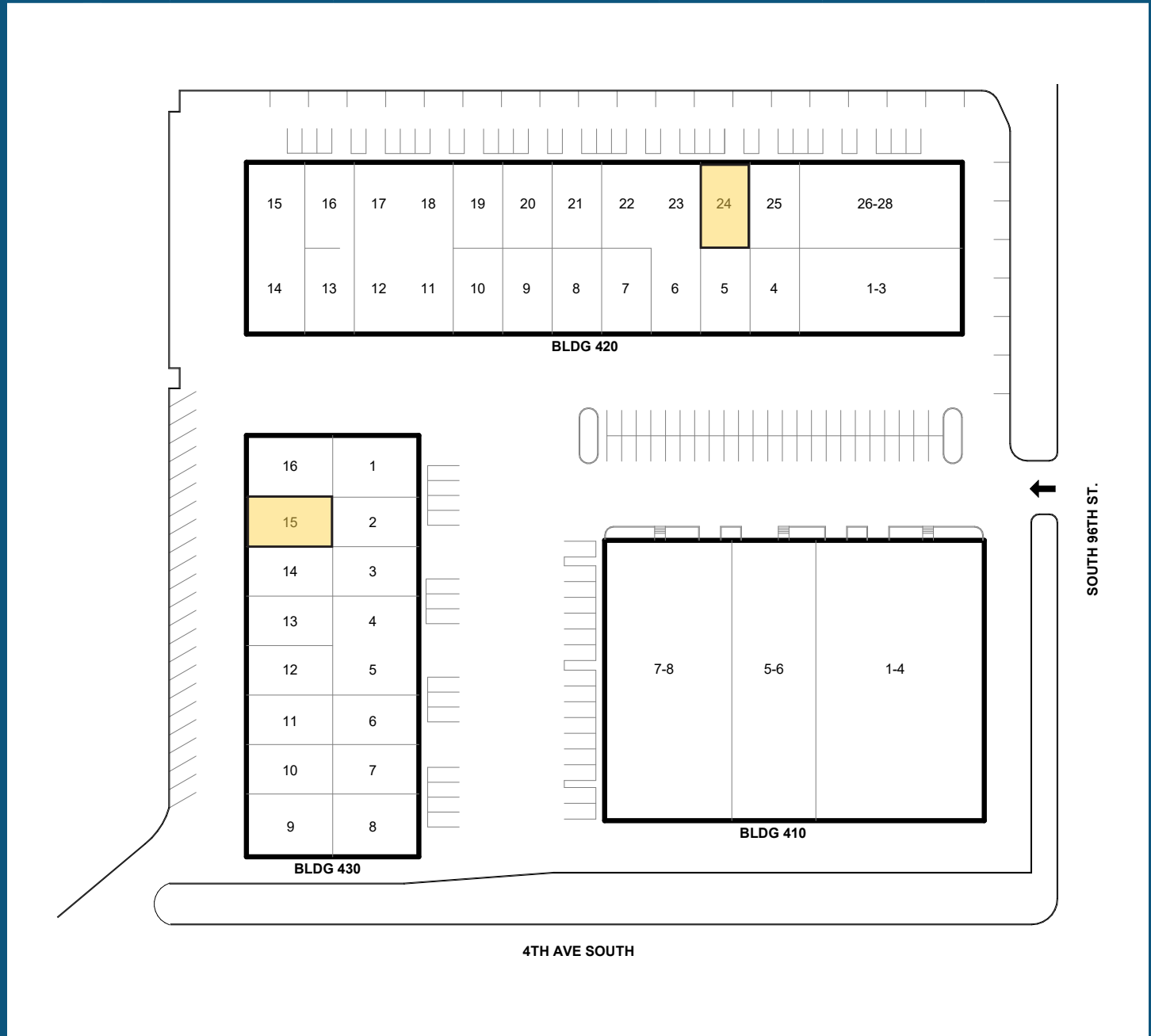
SOUTH 96TH BUSINESS PARK

410 SOUTH 96TH STREET | SEATTLE, WA 98108



Current Lease Opportunities

Building	Suite	Total SF	Office SF	Available	Loading	Lease Rate
430	15	1,384 SF	205 SF	30-60 Days	1 GL Door	Call Broker
420	24	1,376 SF	TBD	Now	1 GL Door	Call Broker



SPENCER MEAD
 206.787.1476
 smead@neilwalter.com

JIM HONAN
 206.787.1464
 jhonan@neilwalter.com

550 S Michigan St
 Seattle, WA 98108
 206.787.1800
 www.neilwalter.com

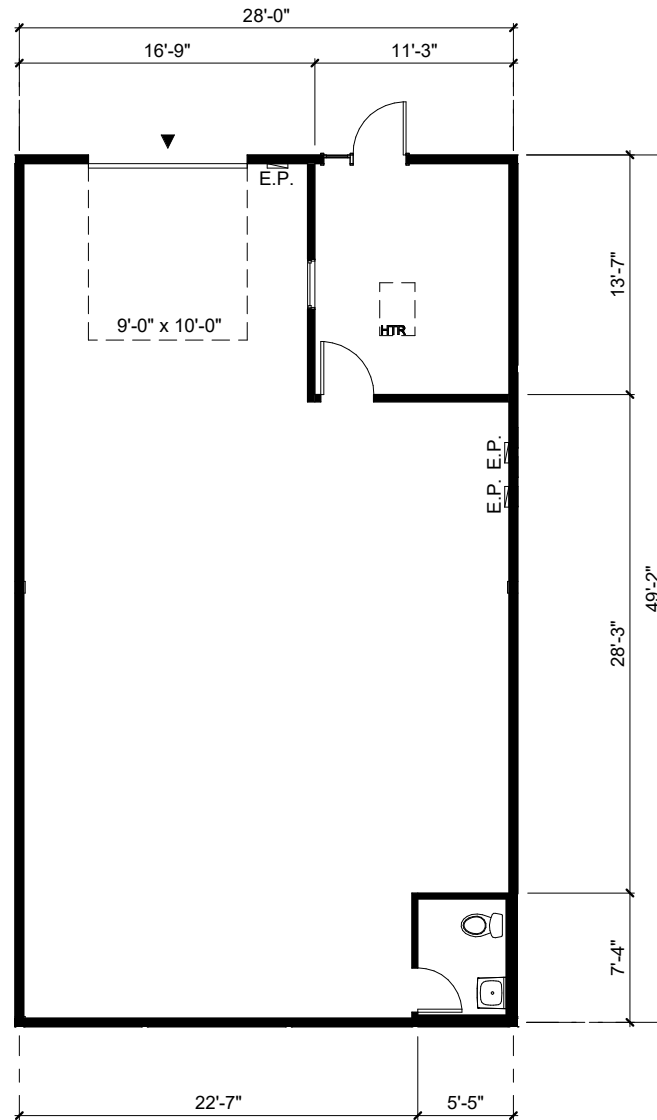
All information references in this document are approximate. The information contained herein is contained from sources deemed reliable. It is provided without representation, warranty, or guarantee, expressed or implied as to accuracy. Prospective buyer or tenant should conduct its own independent investigation relating to the property, government codes and regulations, allowed uses, and all other matters, regardless of whether they are referred to or contained in this document.

SOUTH 96TH BUSINESS PARK

410 SOUTH 96TH STREET | SEATTLE, WA 98108



Building	Suite	Total SF	Office SF	Available	Loading	Lease Rate
430	15	1,384 SF	205 SF	30-60 Days	1 GL Door	Call Broker



SPENCER MEAD
206.787.1476
smead@neilwalter.com

JIM HONAN
206.787.1464
jhonan@neilwalter.com

550 S Michigan St
Seattle, WA 98108
206.787.1800
www.neilwalter.com

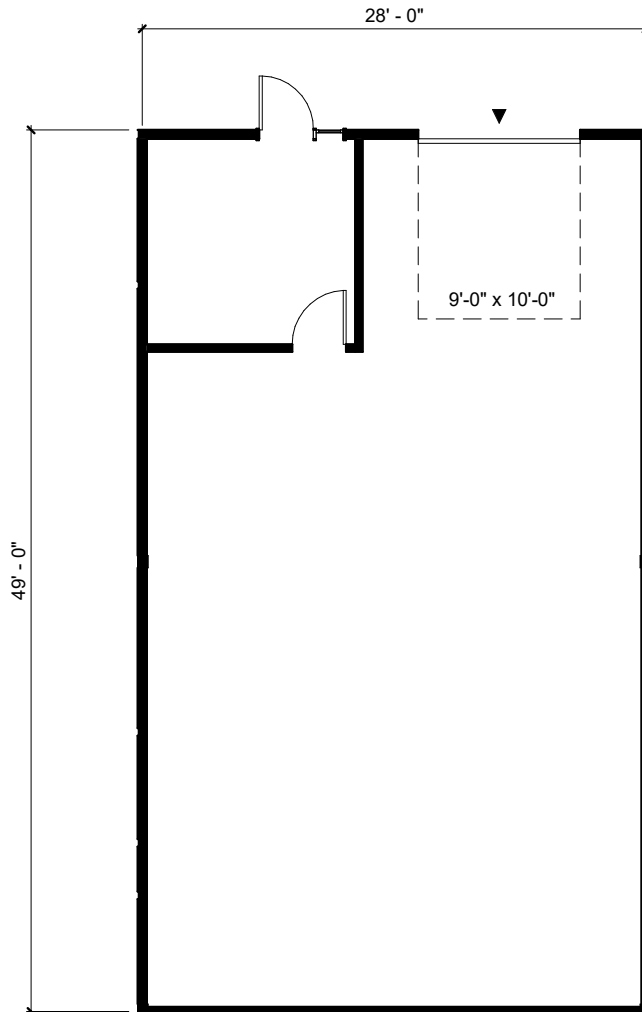
All information references in this document are approximate. The information contained herein is contained from sources deemed reliable. It is provided without representation, warranty, or guarantee, expressed or implied as to accuracy. Prospective buyer or tenant should conduct its own independent investigation relating to the property, government codes and regulations, allowed uses, and all other matters, regardless of whether they are referred to or contained in this document.

SOUTH 96TH BUSINESS PARK

410 SOUTH 96TH STREET | SEATTLE, WA 98108



Building	Suite	Total SF	Office SF	Available	Loading	Lease Rate
420	24	1,376 SF	TBD	Now	1 GL Door	Call Broker



SPENCER MEAD
206.787.1476
smead@neilwalter.com

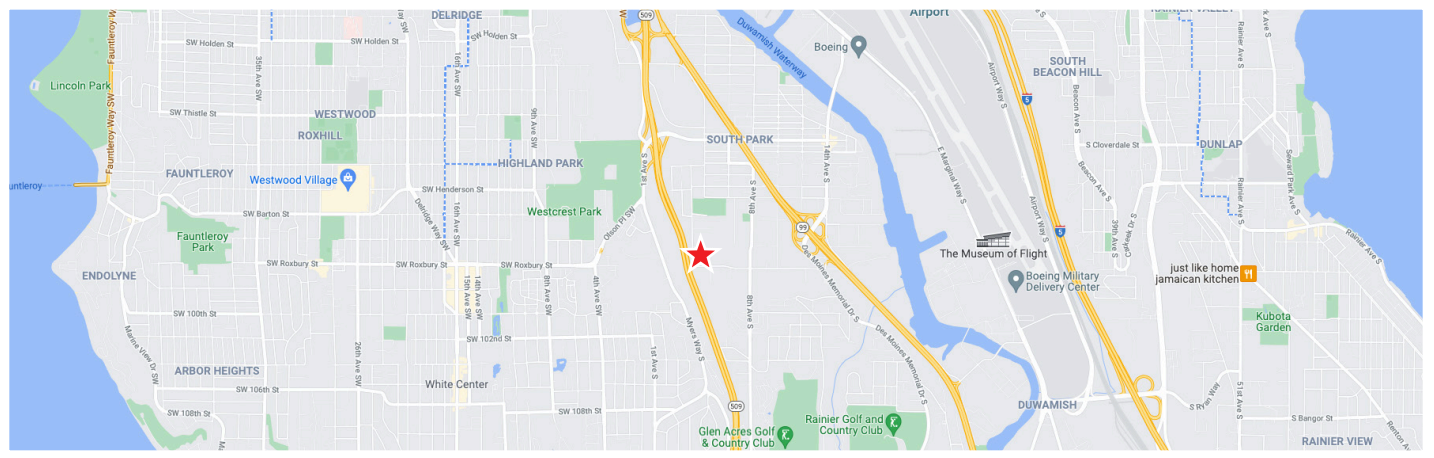
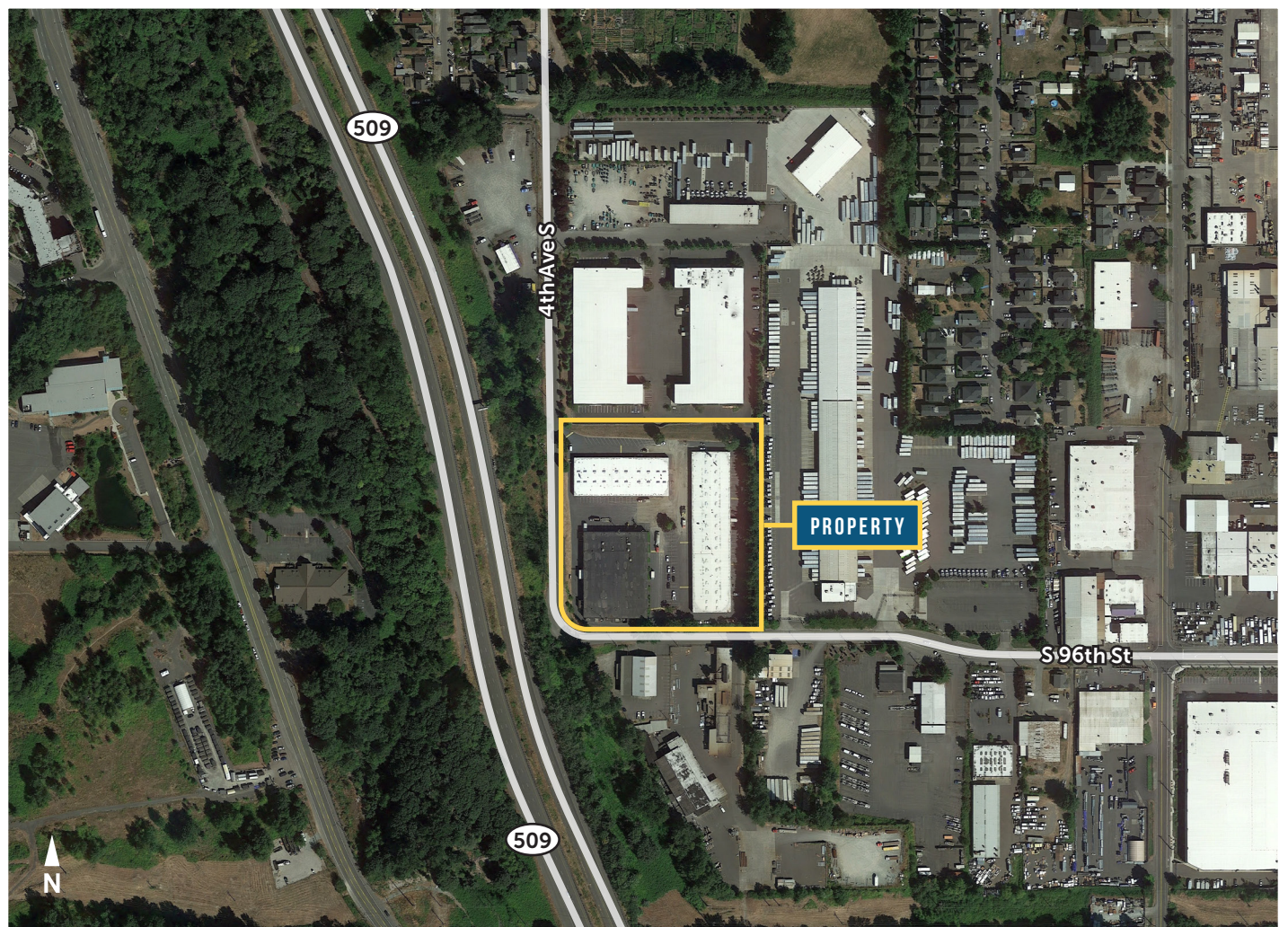
JIM HONAN
206.787.1464
jhonan@neilwalter.com

550 S Michigan St
Seattle, WA 98108
206.787.1800
www.neilwalter.com

All information references in this document are approximate. The information contained herein is contained from sources deemed reliable. It is provided without representation, warranty, or guarantee, expressed or implied as to accuracy. Prospective buyer or tenant should conduct its own independent investigation relating to the property, government codes and regulations, allowed uses, and all other matters, regardless of whether they are referred to or contained in this document.

SOUTH 96TH BUSINESS PARK

410 SOUTH 96TH STREET | SEATTLE, WA 98108



SPENCER MEAD
206.787.1476
smead@neilwalter.com

JIM HONAN
206.787.1464
jhonan@neilwalter.com

550 S Michigan St
Seattle, WA 98108
206.787.1800
www.neilwalter.com

All information references in this document are approximate. The information contained herein is contained from sources deemed reliable. It is provided without representation, warranty, or guarantee, expressed or implied as to accuracy. Prospective buyer or tenant should conduct its own independent investigation relating to the property, government codes and regulations, allowed uses, and all other matters, regardless of whether they are referred to or contained in this document.