



\*WETLANDS  
FILLED  
AS PERMITTED

SPRING LAKE COMPANY  
(P.L.S. 1800-01-00)



**OWNER/DEVELOPER:**  
RECREATION DEVELOPMENT, INC.  
COLUMBIA, SOUTH CAROLINA  
TEL: (803) 787-4925  
FAX: (803) 787-1756

**ENGINEER:**  
WILLIAM E. COOPER, P.E.  
1713-B WOODCREST FARMS ROAD  
2226 SOUTH CAROLINA 29045  
TEL: (803) 599-7778

**SANITARY SEWER SERVICE:**  
EAST WILKINS COUNTY PUBLIC SERVICE DISTRICT  
P.O. BOX 24208  
COLUMBIA, SOUTH CAROLINA 29224-2008

**WATER SERVICE:**  
CITY OF COLUMBIA WATER DEPARTMENT  
P.O. BOX 915  
COLUMBIA, SOUTH CAROLINA 29317

CARY LAKE  
HOMEOWNER'S ASSOCIATION  
(P.L.S. 1800-08-00)

CHARLES LEM, JR. &  
DRENDA G. HARPER  
P.L.S. 1800-06-PORION OF 113

ROCKBRIDGE PROPERTIES  
(PARCEL 2, PER PLAT BOOK NO. 1153, PAGE 1918)  
(RECORD OF P.L.S. 1800-08-01)

**LOT AREAS**

1	2.881	0.181
2	17.005	0.215
3	6.708	0.014
4	6.708	0.200
5	14.700	0.014
6	8.175	0.138
7	10.857	0.014
8	13.548	0.311
9	8.617	0.197
10	8.617	0.197
11	8.617	0.203
12	17.000	0.183
13	10.182	0.211
14	11.488	0.014
15	13.575	0.308
16	10.182	0.197
17	8.618	0.219
18	12.111	0.219
19	8.617	0.203
20	8.617	0.203
21	17.000	0.189
22	10.182	0.208
23	17.018	0.244
24	8.618	0.183
25	8.618	0.183
26	8.618	0.183
27	8.618	0.183
28	8.618	0.183
29	8.618	0.183
30	8.618	0.183
31	8.618	0.183
32	8.618	0.183
33	8.618	0.183
34	8.618	0.183
35	8.618	0.183
36	8.618	0.183
37	8.618	0.183
38	8.618	0.183
39	8.618	0.183
40	8.618	0.183
41	8.618	0.183
42	8.618	0.183
43	8.618	0.183
44	8.618	0.183
45	8.618	0.183
46	8.618	0.183
47	8.618	0.183
48	8.618	0.183
49	8.618	0.183
50	8.618	0.183
51	8.618	0.183
52	8.618	0.183
53	8.618	0.183
54	8.618	0.183
55	8.618	0.183
56	8.618	0.183
57	8.618	0.183
58	8.618	0.183
59	8.618	0.183
60	8.618	0.183
61	8.618	0.183
62	8.618	0.183
63	8.618	0.183
64	8.618	0.183
65	8.618	0.183
66	8.618	0.183
67	8.618	0.183
68	8.618	0.183
69	8.618	0.183
70	8.618	0.183
71	8.618	0.183
72	8.618	0.183
73	8.618	0.183
74	8.618	0.183
75	8.618	0.183
76	8.618	0.183
77	8.618	0.183
78	8.618	0.183
79	8.618	0.183
80	8.618	0.183
81	8.618	0.183
82	8.618	0.183
83	8.618	0.183
84	8.618	0.183
85	8.618	0.183
86	8.618	0.183
87	8.618	0.183
88	8.618	0.183
89	8.618	0.183
90	8.618	0.183
91	8.618	0.183
92	8.618	0.183
93	8.618	0.183
94	8.618	0.183
95	8.618	0.183
96	8.618	0.183
97	8.618	0.183
98	8.618	0.183
99	8.618	0.183
100	8.618	0.183

**LINE TABLE**

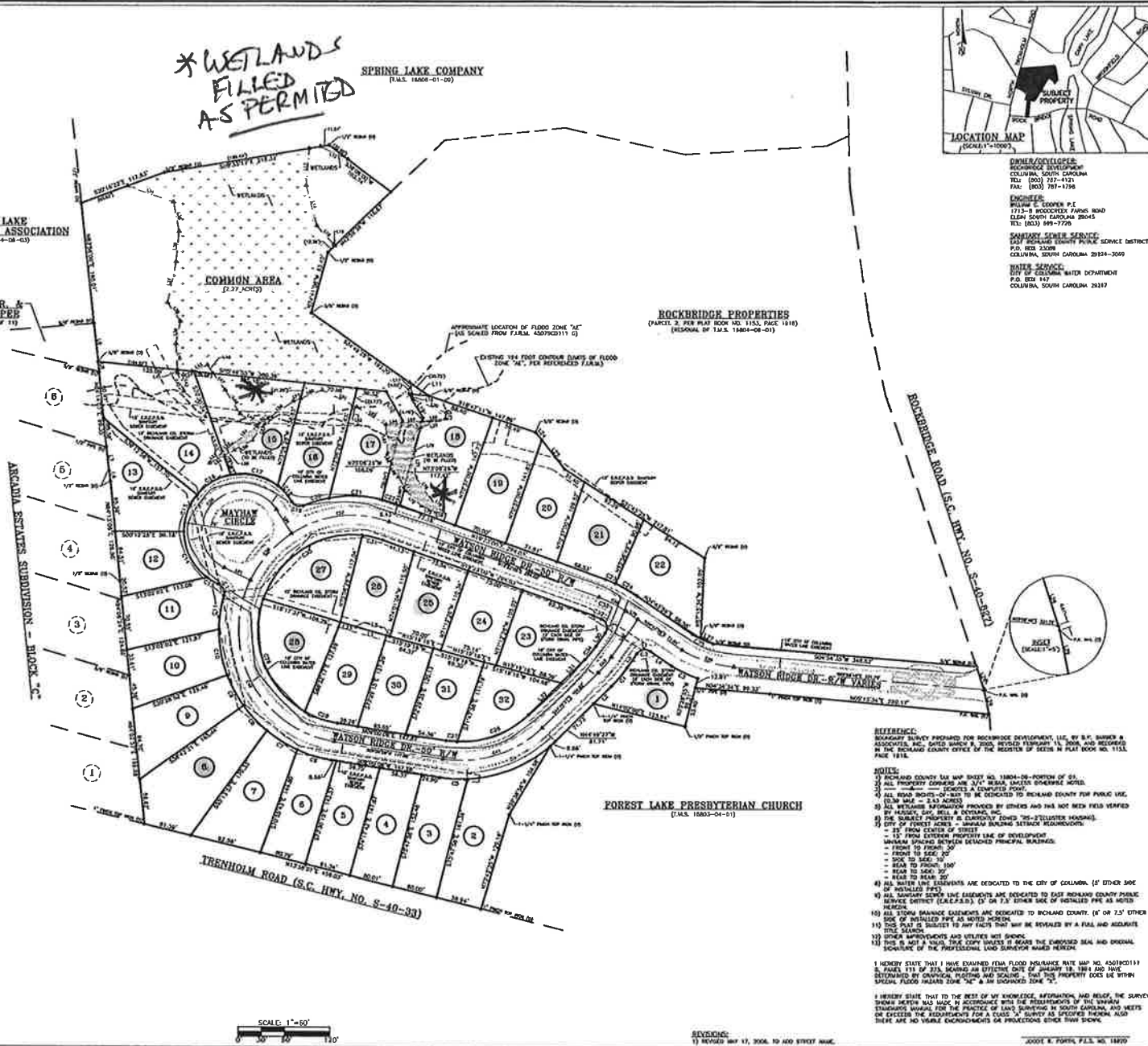
LINE	BEARING	DISTANCE	LINE	BEARING	DISTANCE
101	S112°00'00"W	1.000	111	S112°00'00"W	1.000
102	S44°49'27"E	3.500	112	S44°49'27"E	3.500
103	S112°00'00"W	1.000	113	S112°00'00"W	1.000
104	S37°43'30"E	2.118	114	S37°43'30"E	2.118
105	S112°00'00"W	1.000	115	S112°00'00"W	1.000
106	S112°00'00"W	1.000	116	S112°00'00"W	1.000
107	S112°00'00"W	1.000	117	S112°00'00"W	1.000
108	S112°00'00"W	1.000	118	S112°00'00"W	1.000
109	S112°00'00"W	1.000	119	S112°00'00"W	1.000
110	S112°00'00"W	1.000	120	S112°00'00"W	1.000
111	S112°00'00"W	1.000	121	S112°00'00"W	1.000
112	S112°00'00"W	1.000	122	S112°00'00"W	1.000
113	S112°00'00"W	1.000	123	S112°00'00"W	1.000
114	S112°00'00"W	1.000	124	S112°00'00"W	1.000
115	S112°00'00"W	1.000	125	S112°00'00"W	1.000
116	S112°00'00"W	1.000	126	S112°00'00"W	1.000
117	S112°00'00"W	1.000	127	S112°00'00"W	1.000
118	S112°00'00"W	1.000	128	S112°00'00"W	1.000
119	S112°00'00"W	1.000	129	S112°00'00"W	1.000
120	S112°00'00"W	1.000	130	S112°00'00"W	1.000
121	S112°00'00"W	1.000	131	S112°00'00"W	1.000
122	S112°00'00"W	1.000	132	S112°00'00"W	1.000
123	S112°00'00"W	1.000	133	S112°00'00"W	1.000
124	S112°00'00"W	1.000	134	S112°00'00"W	1.000
125	S112°00'00"W	1.000	135	S112°00'00"W	1.000
126	S112°00'00"W	1.000	136	S112°00'00"W	1.000
127	S112°00'00"W	1.000	137	S112°00'00"W	1.000
128	S112°00'00"W	1.000	138	S112°00'00"W	1.000
129	S112°00'00"W	1.000	139	S112°00'00"W	1.000
130	S112°00'00"W	1.000	140	S112°00'00"W	1.000
131	S112°00'00"W	1.000	141	S112°00'00"W	1.000
132	S112°00'00"W	1.000	142	S112°00'00"W	1.000
133	S112°00'00"W	1.000	143	S112°00'00"W	1.000
134	S112°00'00"W	1.000	144	S112°00'00"W	1.000
135	S112°00'00"W	1.000	145	S112°00'00"W	1.000
136	S112°00'00"W	1.000	146	S112°00'00"W	1.000
137	S112°00'00"W	1.000	147	S112°00'00"W	1.000
138	S112°00'00"W	1.000	148	S112°00'00"W	1.000
139	S112°00'00"W	1.000	149	S112°00'00"W	1.000
140	S112°00'00"W	1.000	150	S112°00'00"W	1.000

**CURVE TABLE**

CHORD	CHORD BEARING	CHORD BEARING	ARC LENGTH	CHORD BEARING
C1	S112°00'00"W	S112°00'00"W	11.309	11.309
C2	S112°00'00"W	S112°00'00"W	11.309	11.309
C3	S112°00'00"W	S112°00'00"W	11.309	11.309
C4	S112°00'00"W	S112°00'00"W	11.309	11.309
C5	S112°00'00"W	S112°00'00"W	11.309	11.309
C6	S112°00'00"W	S112°00'00"W	11.309	11.309
C7	S112°00'00"W	S112°00'00"W	11.309	11.309
C8	S112°00'00"W	S112°00'00"W	11.309	11.309
C9	S112°00'00"W	S112°00'00"W	11.309	11.309
C10	S112°00'00"W	S112°00'00"W	11.309	11.309
C11	S112°00'00"W	S112°00'00"W	11.309	11.309
C12	S112°00'00"W	S112°00'00"W	11.309	11.309
C13	S112°00'00"W	S112°00'00"W	11.309	11.309
C14	S112°00'00"W	S112°00'00"W	11.309	11.309
C15	S112°00'00"W	S112°00'00"W	11.309	11.309
C16	S112°00'00"W	S112°00'00"W	11.309	11.309
C17	S112°00'00"W	S112°00'00"W	11.309	11.309
C18	S112°00'00"W	S112°00'00"W	11.309	11.309
C19	S112°00'00"W	S112°00'00"W	11.309	11.309
C20	S112°00'00"W	S112°00'00"W	11.309	11.309
C21	S112°00'00"W	S112°00'00"W	11.309	11.309
C22	S112°00'00"W	S112°00'00"W	11.309	11.309
C23	S112°00'00"W	S112°00'00"W	11.309	11.309
C24	S112°00'00"W	S112°00'00"W	11.309	11.309
C25	S112°00'00"W	S112°00'00"W	11.309	11.309
C26	S112°00'00"W	S112°00'00"W	11.309	11.309
C27	S112°00'00"W	S112°00'00"W	11.309	11.309
C28	S112°00'00"W	S112°00'00"W	11.309	11.309
C29	S112°00'00"W	S112°00'00"W	11.309	11.309
C30	S112°00'00"W	S112°00'00"W	11.309	11.309
C31	S112°00'00"W	S112°00'00"W	11.309	11.309
C32	S112°00'00"W	S112°00'00"W	11.309	11.309
C33	S112°00'00"W	S112°00'00"W	11.309	11.309
C34	S112°00'00"W	S112°00'00"W	11.309	11.309
C35	S112°00'00"W	S112°00'00"W	11.309	11.309
C36	S112°00'00"W	S112°00'00"W	11.309	11.309
C37	S112°00'00"W	S112°00'00"W	11.309	11.309
C38	S112°00'00"W	S112°00'00"W	11.309	11.309
C39	S112°00'00"W	S112°00'00"W	11.309	11.309
C40	S112°00'00"W	S112°00'00"W	11.309	11.309
C41	S112°00'00"W	S112°00'00"W	11.309	11.309
C42	S112°00'00"W	S112°00'00"W	11.309	11.309
C43	S112°00'00"W	S112°00'00"W	11.309	11.309
C44	S112°00'00"W	S112°00'00"W	11.309	11.309
C45	S112°00'00"W	S112°00'00"W	11.309	11.309

**REVISIONS:**

1	REVISED MAY 17, 2006, TO ADD STREET NAME.
---	---



**REFERENCE:**  
BOUNDARY SURVEY PREPARED FOR ROCKBRIDGE DEVELOPMENT, L.L.C. BY S.C. SURVEY & ASSOCIATES, P.C., SAVED WHICH A 2006 REVISION FEBRUARY 14, 2006, AND RECEIVED IN THE RECORDER'S OFFICE OF THE REGISTER OF DEEDS IN PLAT BOOK NO. 1153, PAGE 1918.

**NOTES:**  
1) ROCKINGHAM COUNTY L&M MAP BOOK NO. 1800A-08-PORION OF 53.  
2) ALL PROPERTY CORNERS ARE TO BE MARKED EXCEPT WHERE SHOWN OTHERWISE.  
3) ALL ROAD RIGHTS-OF-WAY TO BE DEDICATED TO ROCKINGHAM COUNTY FOR PUBLIC USE (25' WIDE - 2.53 ACRES).  
4) ALL WETLANDS INFORMATION PROVIDED BY OTHERS AND HAS NOT BEEN FIELD VERIFIED BY HUSSEY, GAY, BELL & DEYOUNG, INC.  
5) HUSSEY, GAY, BELL & DEYOUNG, INC. HAS CONDUCTED A VISUAL INSPECTION OF THE SUBJECT PROPERTY AND HAS IDENTIFIED THE FOLLOWING WETLANDS:  
- 15' FROM CENTER OF STREET  
- 15' FROM EXISTING PROPERTY LINE OF DEVELOPMENT  
UNLESS SHOWN OTHERWISE DETACHED PRINCIPAL BUILDINGS:  
- FROM TO FRONT, 30'  
- FROM TO SIDE, 30'  
- FROM TO REAR, 100'  
- FROM TO SIDE, 30'  
- FROM TO REAR, 30'  
6) ALL WATER LINE EXEMPTIONS ARE DEDICATED TO THE CITY OF COLUMBIA. (5' EITHER SIDE OF EXEMPTION LINE).  
7) ALL SANITARY SEWER LINE EXEMPTIONS ARE DEDICATED TO EAST ROCKINGHAM COUNTY PUBLIC SERVICE DISTRICT (EAST R.S.D.). (5' ON EACH SIDE OF EXEMPTION LINE AND 10' EITHER SIDE OF EXEMPTION LINE).  
8) ALL STORM SEWERAGE EXEMPTIONS ARE DEDICATED TO ROCKINGHAM COUNTY. (5' ON EACH SIDE OF EXEMPTION LINE).  
9) THIS PLAT IS SUBJECT TO ANY FACTS THAT MAY BE REVEALED BY A FINAL AND NEGATIVE TITLE SEARCH.  
10) OTHER IMPROVEMENTS AND UTILITIES WILL BE SHOWN.  
11) THIS IS NOT A VALID TITLE COPY UNLESS IT BEARS THE ENGINEER'S SEAL AND ORIGINAL SIGNATURE OF THE PROFESSIONAL LAND SURVEYOR NAMED HEREON.

I HEREBY STATE THAT I HAVE EXAMINED FEMA FLOOD INSURANCE RATE MAP NO. 45070C0111 5, PANEL 17B OF 21B, SHOWN AN EFFECTIVE DATE OF JANUARY 18, 1994 AND HAVE DETERMINED BY OBSERVATION, PHOTOGRAPHY AND SCALING THAT THIS PROPERTY DOES NOT WITHIN SPECIAL FLOOD HAZARD ZONE "A" AND AN UNDESIGNED ZONE "X".

I HEREBY STATE THAT TO THE BEST OF MY KNOWLEDGE, INFORMATION, AND BELIEF, THE SURVEY THEREON WAS MADE IN ACCORDANCE WITH THE PROVISIONS OF THE SURVEYING STATUTES AVAILABLE FOR THE PRACTICE OF LAND SURVEYING IN SOUTH CAROLINA, AND MEETS OR EXCEEDS THE REQUIREMENTS FOR A CLASS "A" SURVEY AS SPECIFIED THEREON, ALSO THERE ARE NO VISIBLE ENCUMBRANCES OR PROJECTIONS OTHER THAN SHOWN.

DATE: MAY 10, 2006  
PROJ. # 305101600  
SURVEY # 06051001644  
SCALE: 1" = 60'

JOSEPH R. FOSTER, P.L.S. NO. 18070

HUSSEY, GAY, BELL & DEYOUNG, INC.  
CONSULTING ENGINEERS  
COLUMBIA, SOUTH CAROLINA  
1713-B WOODCREST FARMS ROAD  
2226 SOUTH CAROLINA 29045  
TEL: (803) 599-7778



TOTAL AREA = 11.85 ACRES  
RATIO OF PRECISION = 1/10000  
A.C. BY COORDINATE METHOD  
T.A.S. NO. 1800A-08-PORION OF 113  
S.F. 54 No. 19

BONDED SUBDIVISION PLAT OF  
**ROCKBRIDGE SUBDIVISION**  
RICHLAND COUNTY, CITY OF FOREST LAKE, SOUTH CAROLINA

DATE: MAY 10, 2006  
PROJ. # 305101600  
SURVEY # 06051001644  
SCALE: 1" = 60'