



ROXBORO ROAD PROFESSIONAL CENTER



PRESENTED BY:

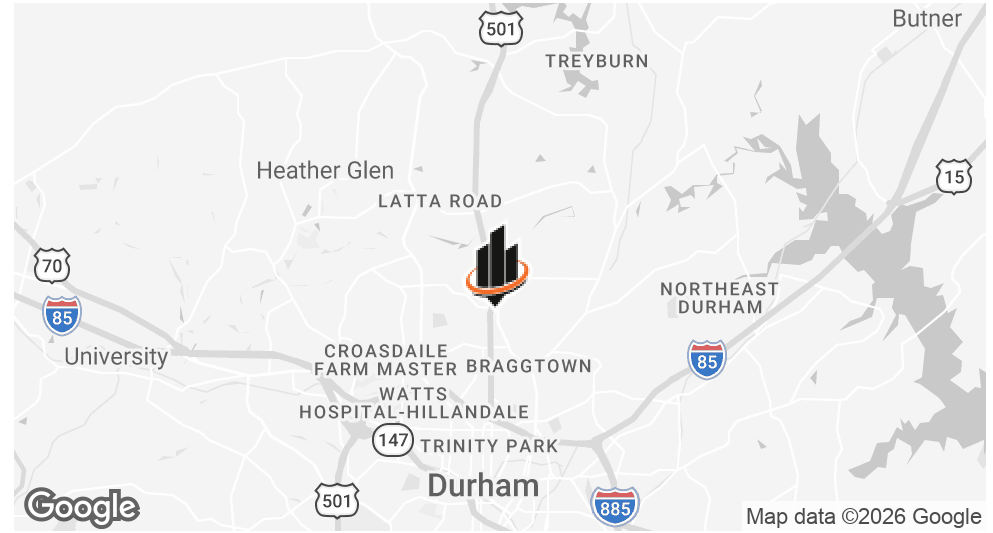


ALEX ZAJDEL

919.287.3215 | alex.zajdel@svn.com

FOR SALE | ±2,408 SF SUITE
4210 N. ROXBORO STREET
DURHAM, NC 27704

PROPERTY SUMMARY



ASKING PRICE	\$565,000
---------------------	------------------

OFFERING SUMMARY

SUITE 140 SIZE:	±2,408 SF
YEAR BUILT:	2004
ZONING:	Office Institutional (OI)
PARKING RATIO:	5.5/1000
PRICE/SF:	\$234.63

PROPERTY OVERVIEW

SVN | Real Estate Associates is pleased to present for sale **Suite 140 at the Roxboro Road Professional Center**. This ±2,408 SF office unit offers an **ideal location for professional services and medical offices**.

Situated in a **high-visibility area with excellent traffic counts (±21,417 VPD) and ample parking**, this is a prime opportunity to join a thriving tenant mix in this well-maintained center and take advantage of the **growing north Durham market**.

PROPERTY HIGHLIGHTS

- Single-story end-unit office condo with windows on three sides, providing abundant natural light
- Two miles north of I-85/US 501, just one mile from Duke Regional Hospital

ALEX ZAJDEL
O: 919.287.3215
alex.zajdel@svn.com

ROXBORO ROAD PROFESSIONAL CENTER | 4210 N. Roxboro Street, Suite 140 Durham, NC 27704



SUITE OVERVIEW

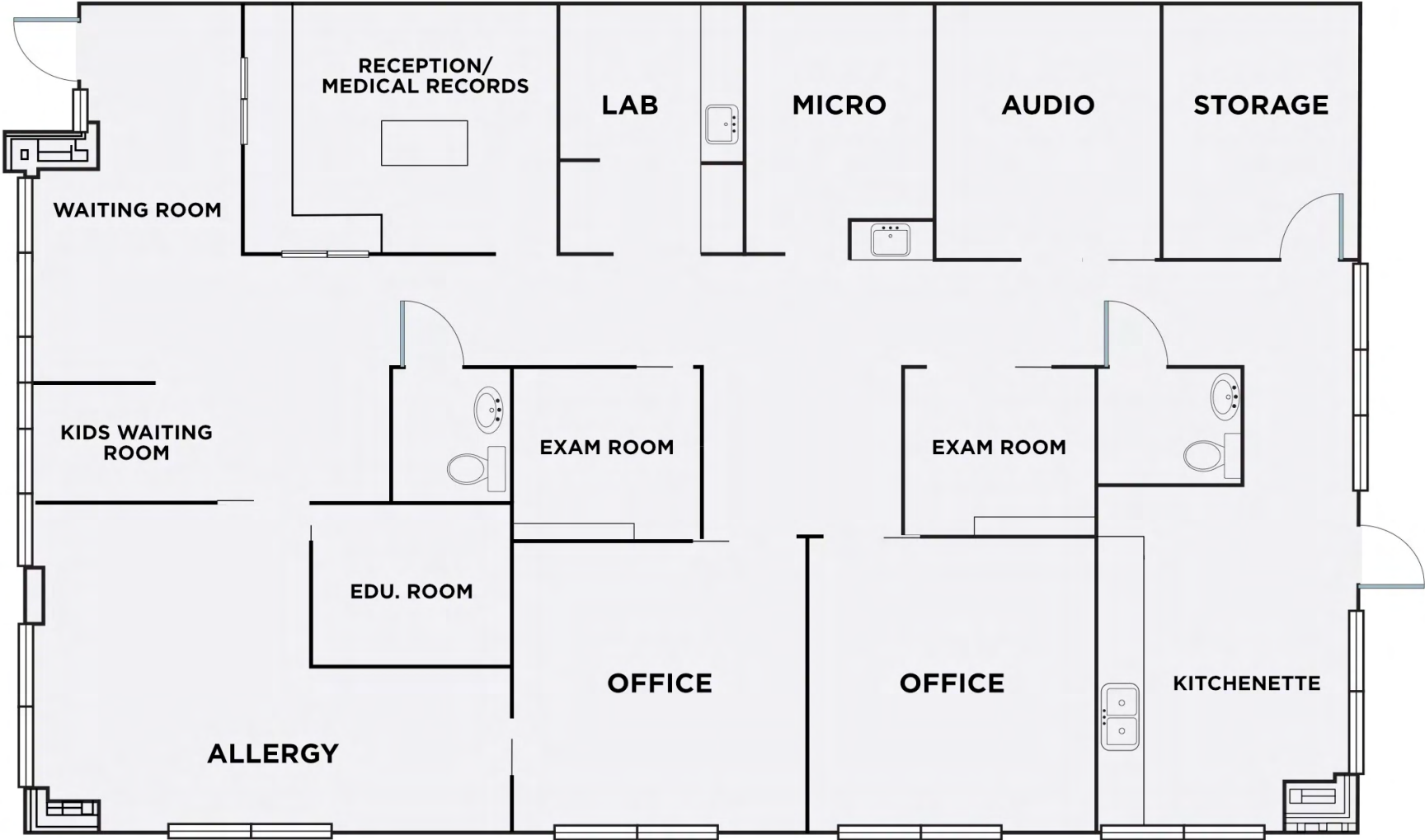


ALEX ZAJDEL
O: 919.287.3215
alex.zajdel@svn.com

ROXBORO ROAD PROFESSIONAL CENTER | 4210 N. Roxboro Street, Suite 140 Durham, NC 27704



FLOOR PLAN/PREVIOUS TENANT LAYOUT



ALEX ZAJDEL
O: 919.287.3215
alex.zajdel@svn.com

ROXBORO ROAD PROFESSIONAL CENTER | 4210 N. Roxboro Street, Suite 140 Durham, NC 27704



INTERIOR PHOTOS



ALEX ZAJDEL
O: 919.287.3215
alex.zajdel@svn.com

ROXBORO ROAD PROFESSIONAL CENTER | 4210 N. Roxboro Street, Suite 140 Durham, NC 27704



INTERIOR PHOTOS



ALEX ZAJDEL
O: 919.287.3215
alex.zajdel@svn.com

ROXBORO ROAD PROFESSIONAL CENTER | 4210 N. Roxboro Street, Suite 140 Durham, NC 27704



AERIAL PROPERTY PHOTOS



ALEX ZAJDEL
O: 919.287.3215
alex.zajdel@svn.com

ROXBORO ROAD PROFESSIONAL CENTER | 4210 N. Roxboro Street, Suite 140 Durham, NC 27704



RETAILER MAP



ALEX ZAJDEL
 O: 919.287.3215
 alex.zajdel@svn.com

ROXBORO ROAD PROFESSIONAL CENTER | 4210 N. Roxboro Street, Suite 140 Durham, NC 27704



DEMOGRAPHICS MAP & REPORT

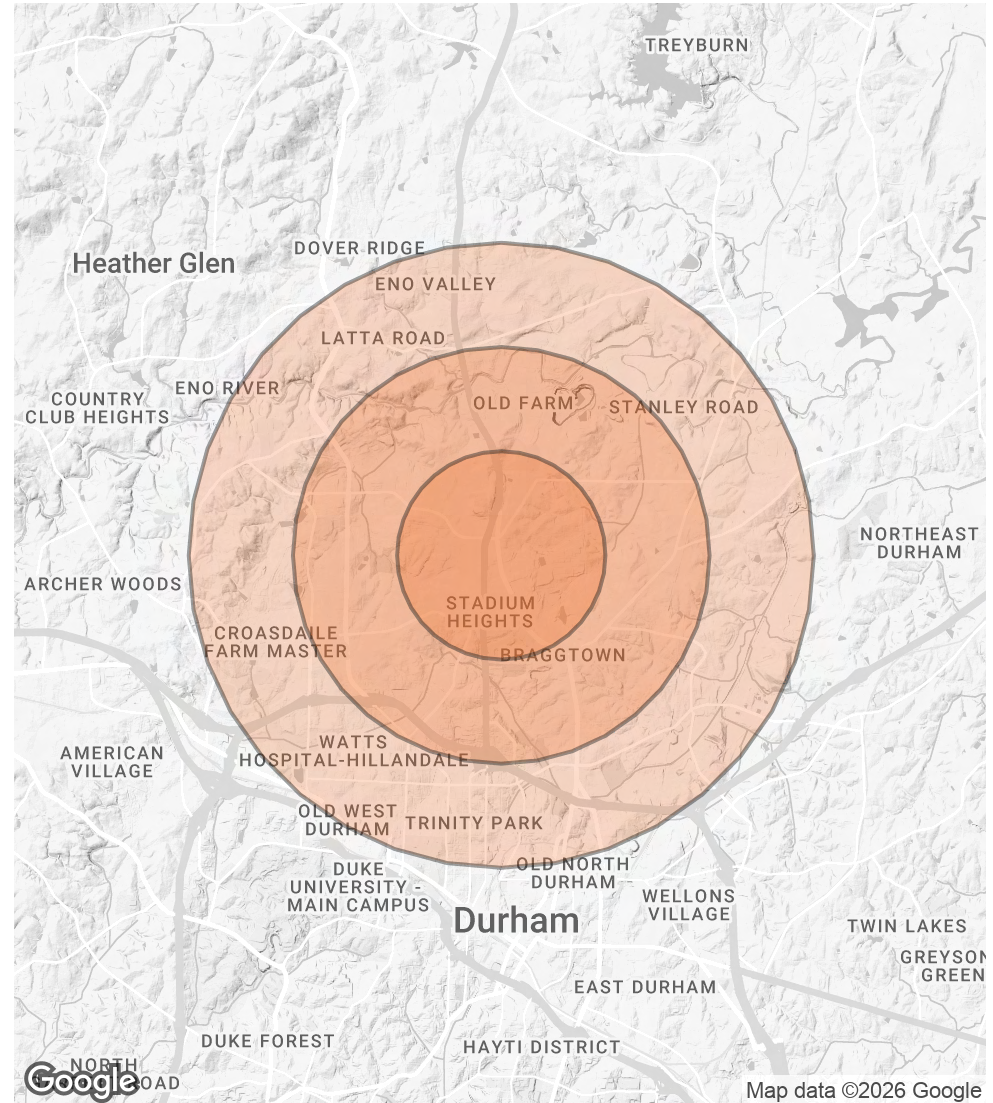
POPULATION

	1 MILE	2 MILES	3 MILES
TOTAL POPULATION	8,989	34,975	60,224
AVERAGE AGE	39	38	39
AVERAGE AGE (MALE)	37	37	37
AVERAGE AGE (FEMALE)	40	40	40

HOUSEHOLDS & INCOME

	1 MILE	2 MILES	3 MILES
TOTAL HOUSEHOLDS	3,530	14,174	24,842
# OF PERSONS PER HH	2.5	2.5	2.4
AVERAGE HH INCOME	\$67,815	\$77,725	\$94,713
AVERAGE HOUSE VALUE	\$289,831	\$326,457	\$404,096

2020 American Community Survey (ACS)



ALEX ZAJDEL

O: 919.287.3215

alex.zajdel@svn.com

ROXBORO ROAD PROFESSIONAL CENTER | 4210 N. Roxboro Street, Suite 140 Durham, NC 27704



www.svn-rea.com



Local Expertise.
National Reach.

SVN | Real Estate Associates

3333 Durham-Chapel Hill Blvd, Suite C | Durham, NC 27707