

FOR LEASE
**Former Economy
Rent-A-Car**

111 SOUTHWEST 33RD STREET
Fort Lauderdale, FL 33315

PRESENTED BY:

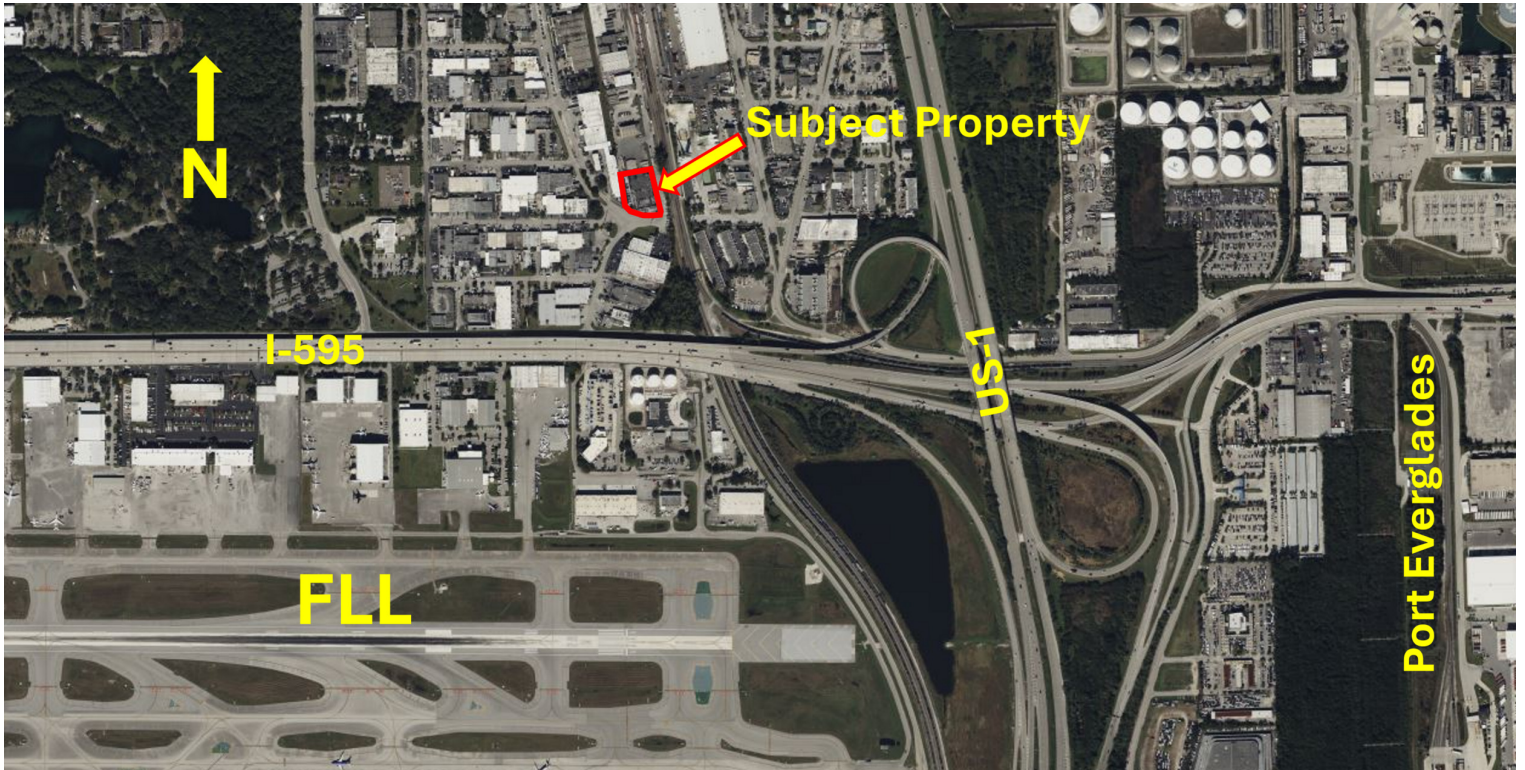
LES BYRON, SIOR, CCIM
C: 954.401.4713
les@svncr.com

KEITH KIDWELL, SIOR, CCIM
C: 954.234.8777
keith@svncr.com

STEVE DAVIS
C: 954.650.7824
steve@svncr.com



PROPERTY SUMMARY



OFFERING SUMMARY

BUILDING SF:	28,059 SF
LOT SIZE:	44,515 SF
OFFICE SF:	6,000 SF
WAREHOUSE OFFICE SF:	1,500 SF
ZONING:	I
OVERHEAD DOORS:	Three (3)
PARKING:	45 Parking Spaces
LEASE RATE:	\$14.90 PSF/yr (NNN)

PROPERTY DESCRIPTION

SVN Commercial Realty is excited to bring to market the first class, freestanding office warehouse building formerly occupied by Economy Rent-A-Car and located adjacent to FLL. This spectacular building can serve a wide range of operations including manufacturing, logistics, warehousing, airport parking and marine related uses. With unparalleled access and visibility to the airport and to Port Everglades, do not miss this opportunity for consideration for your successful business!

PROPERTY HIGHLIGHTS

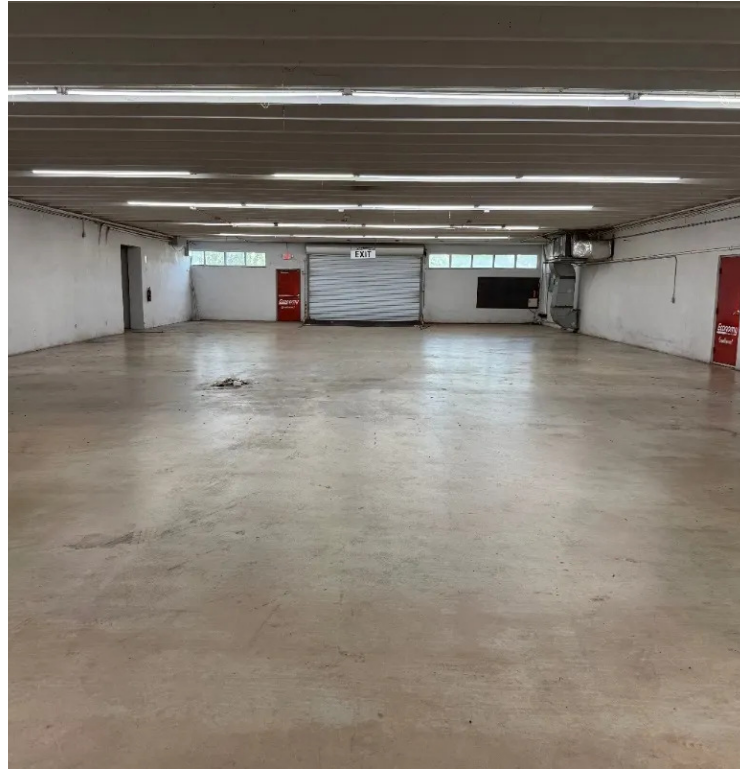
- LOCATION, LOCATION LOCATION!!
- Renovated Office/Customer Counter Area
- Handicap Restroom - Six (6) Total Restrooms
- Mix of Private & Executive Offices; Open Area Workspace
- Concrete Twin T Roof
- Impact Windows
- Ceiling height: 12'

LES BYRON, SIOR, CCIM
C: 954.401.4713
les@svncr.com

KEITH KIDWELL, SIOR, CCIM
C: 954.234.8777
keith@svncr.com

STEVE DAVIS
C: 954.650.7824
steve@svncr.com

ADDITIONAL PHOTOS

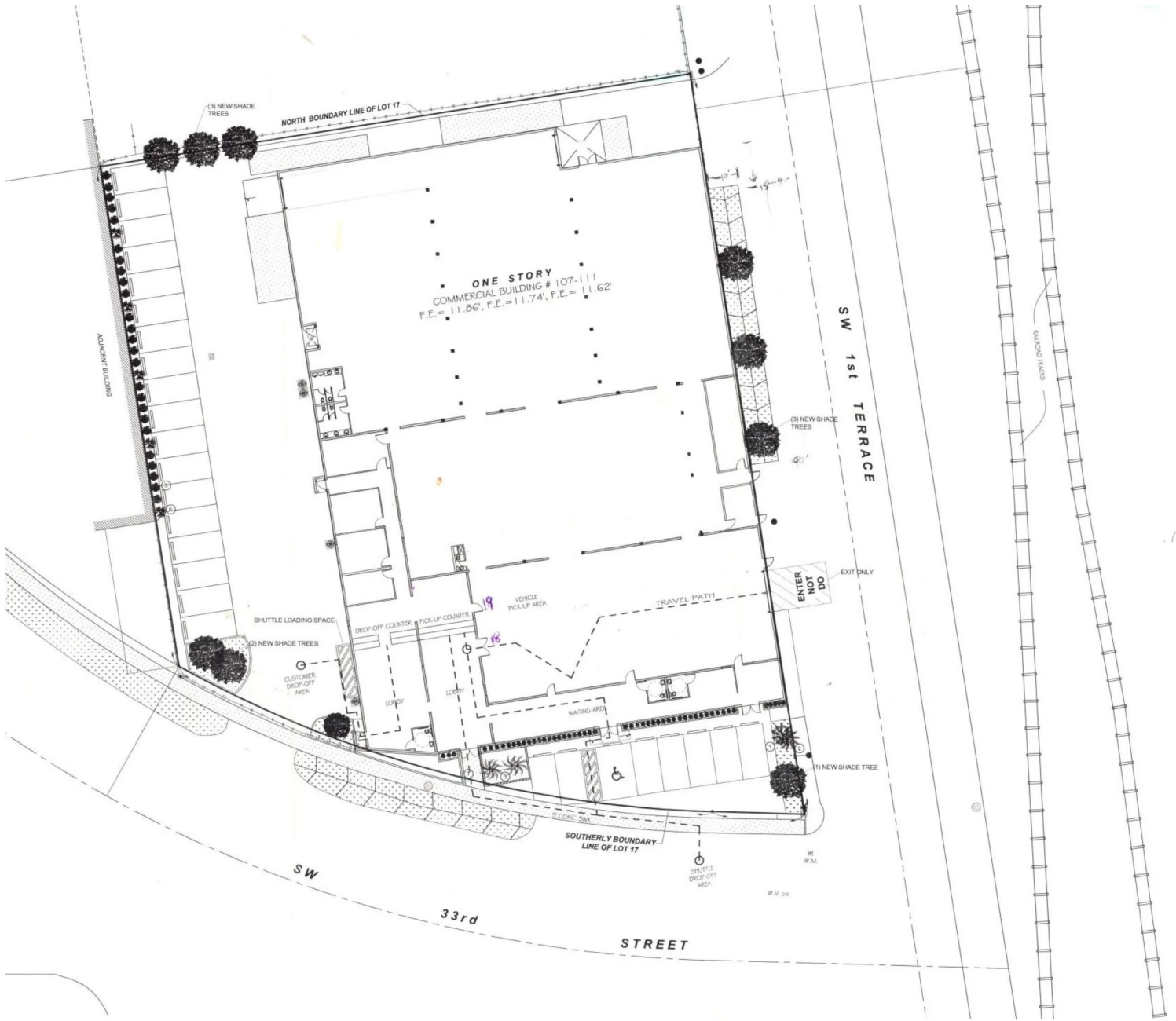


LES BYRON, SIOR, CCIM
C: 954.401.4713
les@svncr.com

KEITH KIDWELL, SIOR, CCIM
C: 954.234.8777
keith@svncr.com

STEVE DAVIS
C: 954.650.7824
steve@svncr.com

SITE PLAN



SITE PLAN
1/16" = 1'-0"

LES BYRON, SIOR, CCIM
C: 954.401.4713
les@svncr.com

KEITH KIDWELL, SIOR, CCIM
C: 954.234.8777
keith@svncr.com

STEVE DAVIS
C: 954.650.7824
steve@svncr.com