

FINISH NOTES:

- ALL COLORS SHALL BE MANUFACTURERS STANDARDS AND WILL BE SELECTED BY THE OWNER.
- VINYL BASE (VB) TO BE 4" HIGH (TYPICAL). PROVIDE ROPPE OR EQUAL.
- ACOUSTICAL CEILING TILE (ACT) TO BE ARMSTRONG #110 CORTEGA FLAT SQUARE LAY-IN TILE. PROVIDE 24" X 48" CEILING TILES IN WHITE 15/16" PRELUDE GRID, OR EQUAL.
- ROOMS 120, 125, AND 127 TO HAVE EXISTING TILE REMOVED PROVIDE NEW VCT FLOOR.
- PROVIDE ONE COAT OF PRIMER AND TWO COATS OF LATEX ENAMEL PAINT (PNT) ON NEW AND EXISTING WALL SURFACES TO RECEIVE PAINT. PAINT ALL TOILET WALLS WITH PAINT SCRUBABLE LATEX ENAMEL PAINT.
- VINYL COMPOSITION TILE (VCT) TO BE 12" X 12" X 1/8". PROVIDE ARMSTRONG OR EQUAL. PROVIDE ALL TRANSITION STRIPS AS REQUIRED.
- ALL INTERIOR FINISHES SHALL BE CLASS A MATERIALS AND SHALL COMPLY WITH THE FLORIDA BUILDING CODE AND INTERNATIONAL FIRE CODE (IFC) SECTION 806.3

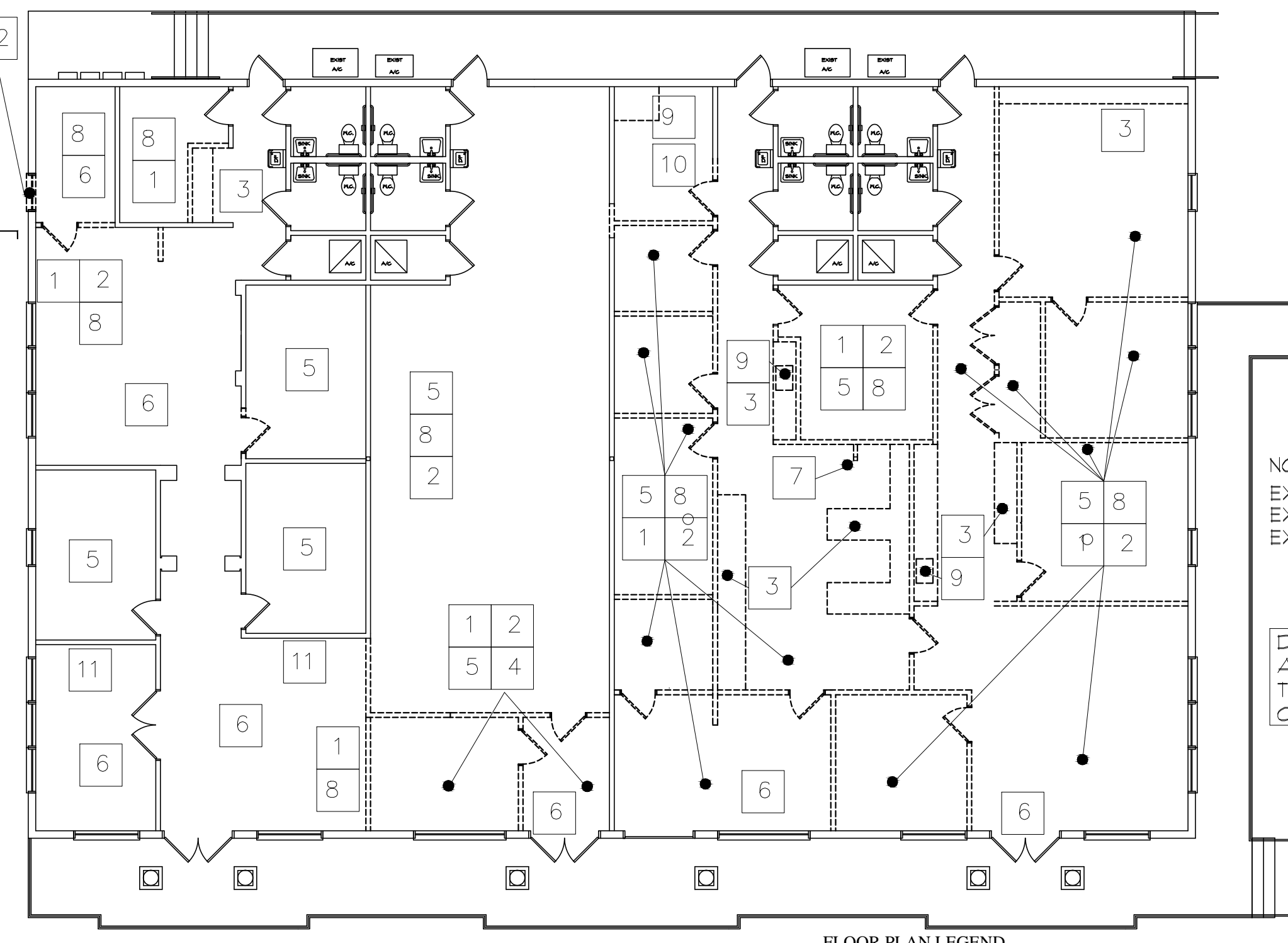
DEMOLITION LEGEND (SEE PLAN AT BELOW)

- REMOVE EXISTING WALLS SHOWN WITH DASHED LINES.
- REMOVE EXISTING DOOR AND FRAME SHOWN WITH DASHED LINES.
- REMOVE EXISTING CABINETS SHOWN WITH DASHED LINES.
- REMOVE EXISTING VINYL WALL COVERING. PREP FOR NEW WALL FINISH.
- REMOVE EXISTING CPT FLOOR FINISH AND VINYL BASE. PREP EXISTING SURFACE FOR NEW FLOOR FINISH AND VINYL BASE.
- REMOVE EXISTING TILE FLOOR FINISH AND BASE.
- REMOVE EXISTING WALL STRUCTURAL COL. TO REMAIN
- REMOVE ACOUSTICAL CEILING ASSEMBLY CONTRACTOR MAY REUSE EXISTING COMPONENTS OR REWORK EXISTING TO ACHIEVE LAYOUT SHOWN ON NEW WORK CEILING PLAN. LIGHT FIXTURES TO BE REUSED AND RELOCATED
- REMOVE EXISTING PLUMBING SHOWN WITH DASHED LINES. CAP WATER LINE.
- REMOVE EXISTING RAISED CURB.
- REMOVE EXISTING INTERIOR WINDOWS
- REMOVE EXISTING STORE FRONT WINDOW, AND PREP FOR NEW EXTERIOR DOOR. REMOVE CMU AS REQUIRED. EXISTING STRUCTURAL LINTEL TO REMAIN IN PLACE.

DOOR SCHEDULE

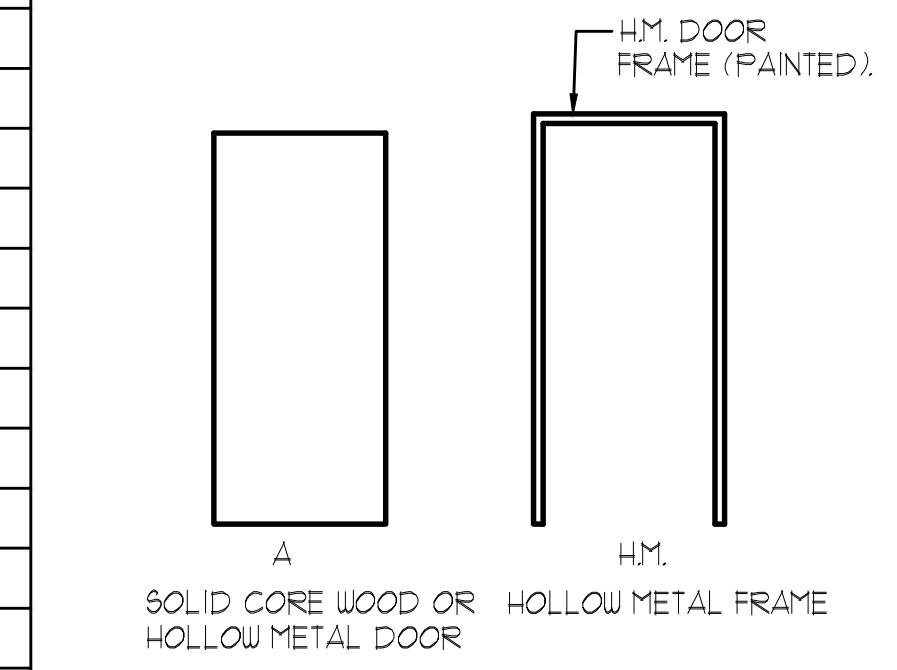
NO.	SIZE	DOOR TYPE	DOOR MAT.	DOOR FIN.	FRAM. TYPE	REMARKS
102A	3'-0" x 7'-0"	A	SCUD	SCUD	HM	OFFICE SET
102B	3'-0" x 7'-0"	A	SCUD	SCUD	HM	OFFICE SET
103A	3'-0" x 7'-0"	A	SCUD	SCUD	HM	OFFICE SET
103B	3'-0" x 7'-0"	A	SCUD	SCUD	HM	OFFICE SET
105A	3'-0" x 7'-0"	A	SCUD	SCUD	HM	OFFICE SET
105B	3'-0" x 7'-0"	A	SCUD	SCUD	HM	OFFICE SET
106	3'-0" x 7'-0"	A	SCUD	SCUD	HM	PROVIDE CLOSERS ENTRY / EXIT PASSAGE
107	3'-0" x 7'-0"	A	SCUD	SCUD	HM	OFFICE SET
108	3'-0" x 7'-0"	A	SCUD	SCUD	HM	OFFICE SET
109	3'-0" x 7'-0"	A	SCUD	SCUD	HM	OFFICE SET
110	3'-0" x 7'-0"	A	SCUD	SCUD	HM	OFFICE SET
111	3'-0" x 7'-0"	A	SCUD	SCUD	HM	OFFICE SET
112	3'-0" x 7'-0"	A	SCUD	SCUD	HM	OFFICE SET
113	3'-0" x 7'-0"	A	SCUD	SCUD	HM	OFFICE SET
114	3'-0" x 7'-0"	A	SCUD	SCUD	HM	OFFICE SET
115	3'-0" x 7'-0"	A	SCUD	SCUD	HM	OFFICE SET
116	3'-0" x 7'-0"	A	SCUD	SCUD	HM	OFFICE SET
119	3'-0" x 7'-0"	A	SCUD	SCUD	HM	OFFICE SET
124	4'-0" x 7'-0"	B	SCUD	SCUD	HM	OFFICE SET
125	3'-0" x 7'-0"	A	SCUD	SCUD	HM	OFFICE SET
127	3'-0" x 7'-0"	A	HM	HM	HM	IMPACT RESISTANT EXTERIOR DOOR THUMB TURN ENTRY LOCK SET

- NEW EXTERIOR DOOR AND FRAME TO BE IMPACT RESISTANT GC TO PROVIDE PRODUCT APPROVAL DATA AT TIME OF PERMIT
- HARDWARE SCHEDULE TO THE ARCHITECT AND OWNER FOR REVIEW.
- ALL HARDWARE TO MEET THE BUILDING CODE AND THE ADA.
- ALL EXISTING EXTERIOR DOORS TO REMAIN.
- ALL EXISTING REAR EXIT DOORS WILL RECEIVE NEW PANIC HARDWARE
- CONTRACTOR TO FIELD VERIFY HEIGHT OF EXISTING DOORS. NEW DOOR HEIGHTS TO MATCH EXISTING DOORS HEIGHTS.
- ALL INTERIOR DOORS TO BE UNDERCUT 1 1/2" TYPICAL.

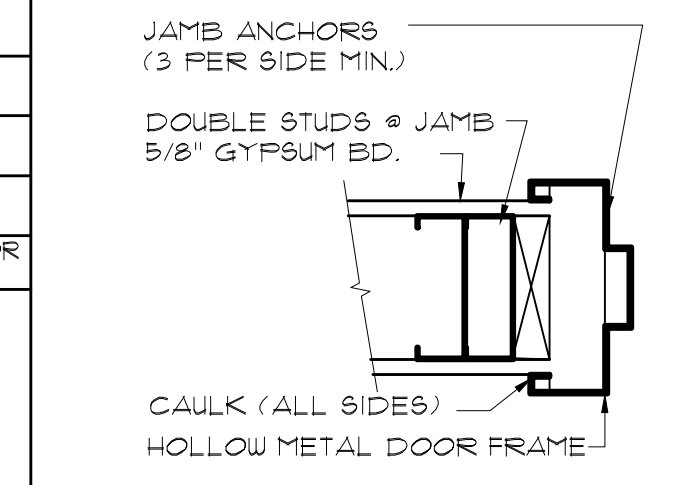


DEMOLITION PLAN

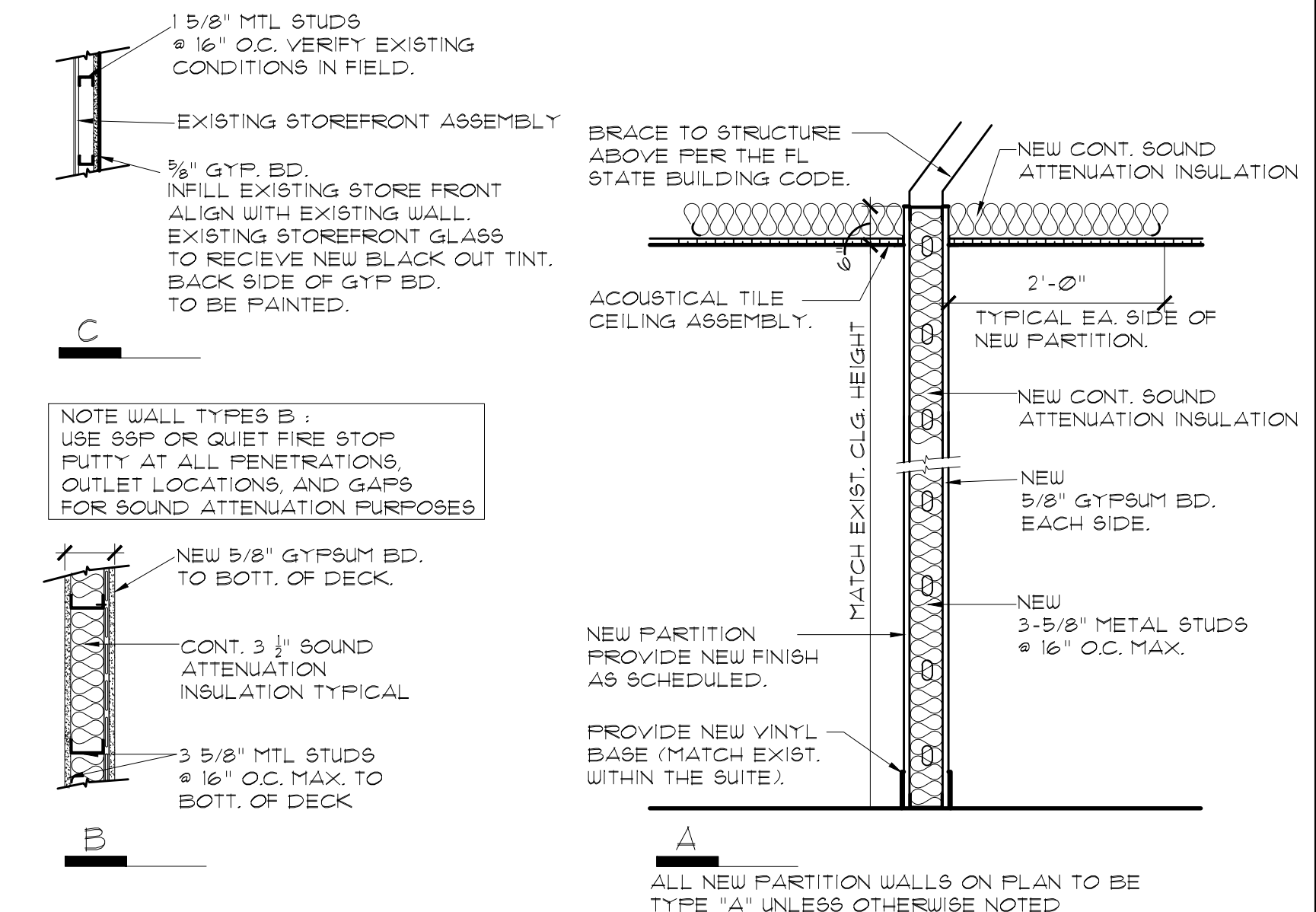
SCALE NOT TO SCALE



DOOR AND FRAME TYPE

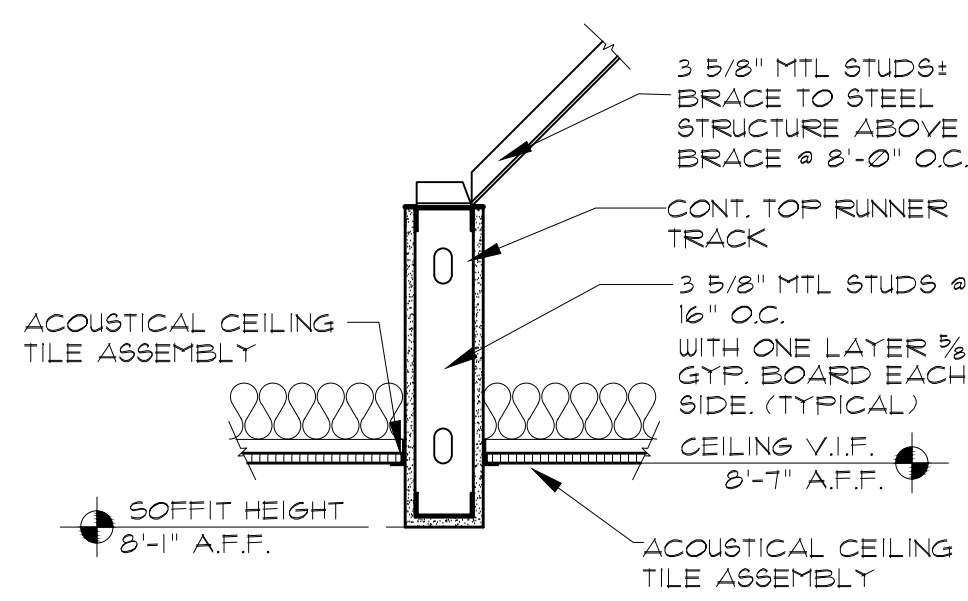


TYP. INTERIOR DOOR FRAME DTL.

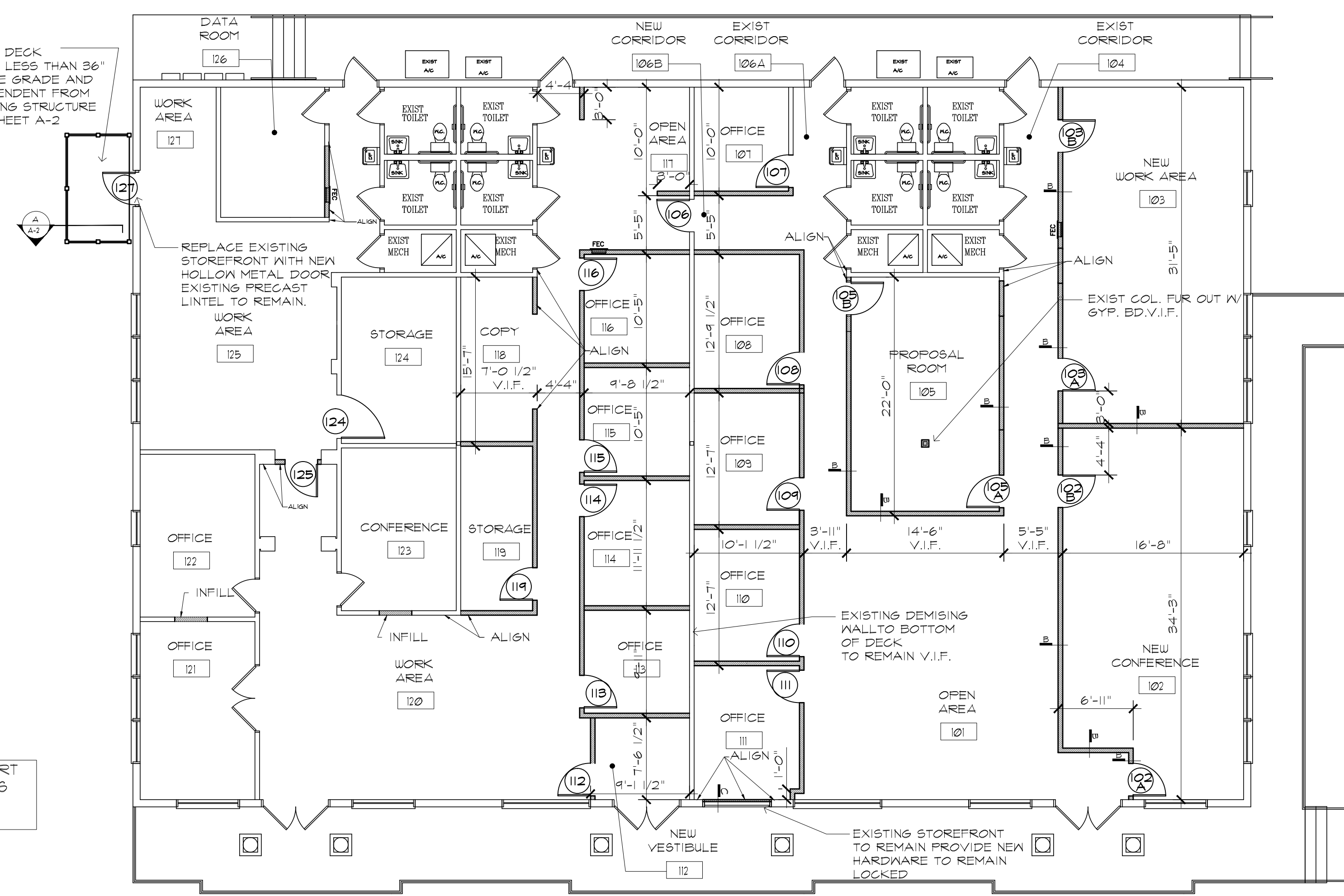


PARTITION TYPES

SCALE: 3/4"=1'-0"



TYP. INTERIOR BULK HEAD DTL.



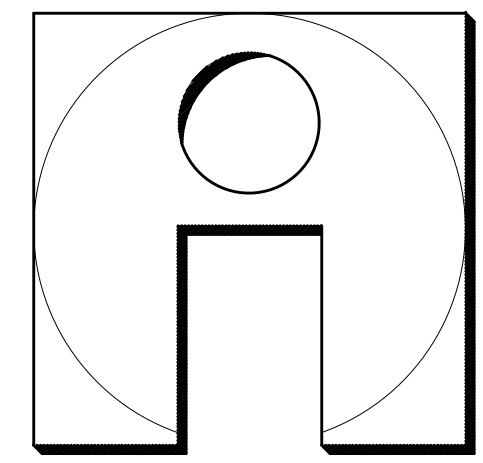
FLOOR PLAN

SCALE: 1/8"=1'-0"



NOTE: EXISTING STRUCTURE TO REMAIN EXISTING RESTROOMS TO REMAIN EXISTING MECHANICAL UNITS TO REMAIN

DO NOT SCALE DRAWINGS. REPORT ALL DIMENSIONS DISCREPANCIES TO ARCHITECT. VERIFY ALL CONDITIONS IN FIELD



INSIDE OUT GROUP INC.

812 LOUDEN AVENUE
DUNEDIN, FLORIDA
34698
(727) 734-3673

ROBERT M. WEINER
ARCHITECT #2955

PROJECT:

ROCKWELL COLLINS INTERIOR UP-FIT

4811 W. GANDY BLVD.
TAMPA, FLORIDA

FLOOR PLAN

REVISIONS:

DRAWN BY:
JP.

DATE:
JULY 7, 2011

JOB NO.:
11-016

A-1